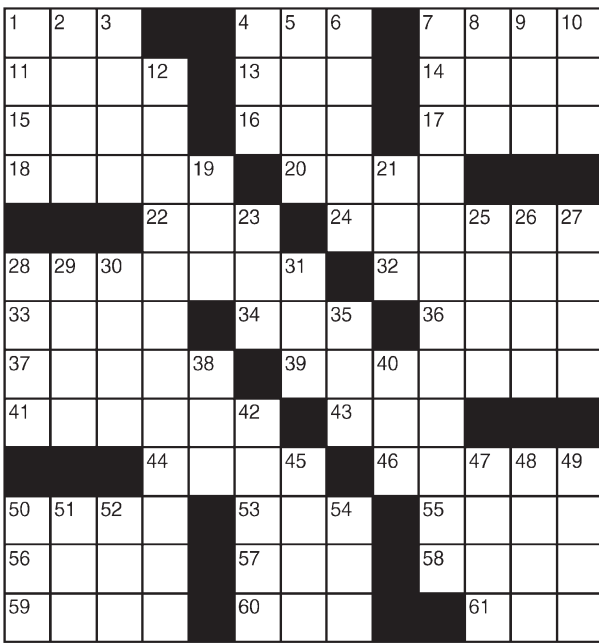


King Crossword

ACROSS

- 1 - -Wan
- 4 Health resort
- 7 Recording
- 11 Swimming venue
- 13 Lummock
- 14 Thing
- 15 Opposed to
- 16 Buddy
- 17 Options list
- 18 Rife with foliage
- 20 Tooth-paste container
- 22 Hearing organ
- 24 Shoe without laces
- 28 Sleep-wear
- 32 Trap
- 33 Verve
- 34 Wrinkly-faced dog
- 36 Faucet problem
- 37 Gives temporarily
- 39 "The Big Bang Theory" star Jim
- 41 Birdcage attachment
- 43 Swab the floors
- 44 Way out
- 46 Stretchy candy
- 50 Pop singer Lady -



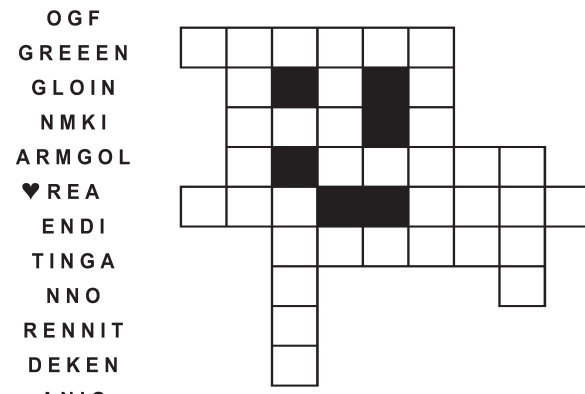
- 53 To and - conflict
 - 55 Col. 7 Ontologists' concerns
 - 56 Settled down 8 Dined
 - 57 Legisla-tion 9 Corral
 - 58 Into the sunrise 10 Flightless bird
 - 59 Big party 12 Vitaly important
 - 60 Storm center 19 Sweet potato
 - 61 Next-to-last Greek letter 21 Derek and Diddle
- DOWN**
- 1 October 23 Knock
 - 2 Skeletal 25 Gambling game
 - 3 Tiny amount 26 Ms. Brockovich
 - 4 Weep 27 Agents, for short
 - 5 Role 28 Riches
 - 6 In a state of 29 Sheltered

© 2013 King Features Synd., Inc.

FEAR KNIGHT

By: rj johnson

CONQUER THE WHIRLED



Unscramble these twelve letter strings to form each into an ordinary word (ex. HAGNEC becomes CHANGE). Prepare to use only ONE word from any marked (♥) letter string as each unscrambles into more than one word (ex. ♥RATHE becomes HATER or EARTH or HEART). Fit each string's word either across or down to knot all twelve strings together.

Puzzles4Kids

by Helene Hovanec

WORD FUN

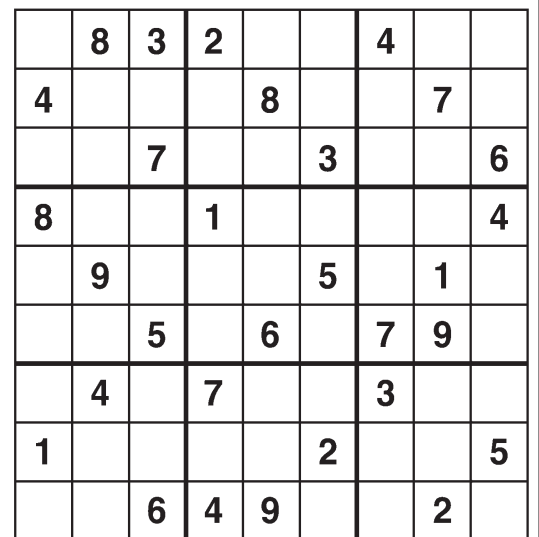
Study the two words on each line to find the ONE letter in the left column that is NOT in the word in the right column. Write the extra letter on the blank space. Then read DOWN to answer this riddle:

- WHAT SNAKES ARE FOUND ON CARS?**
- | | | | |
|--------|-------|--------|-------|
| SLOWER | ROLES | RAVENS | SNARE |
| BRAISE | SABER | BIRDIE | BRIDE |
| RENTAL | LATER | PLATES | STEAL |
| CONDOR | CROON | NESTED | DENTS |
| OUSTER | ROUTE | DARTED | DATED |
| SHOVED | DOVES | STEEPS | RESET |
| INWARD | DRAWN | | |
| DENIED | DINED | | |
| LEVERS | VERSE | | |
| MASKED | MAKES | | |

For more puzzle fun, go to www.brainzles.com

Weekly SUDOKU

by Linda Thistle



Place a number in the empty boxes in such a way that each row across, each column down and each small 9-box square contains all of the numbers from one to nine.

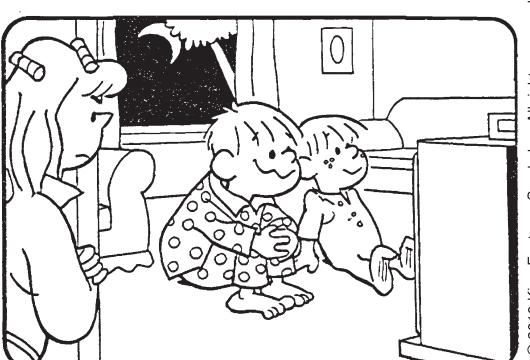
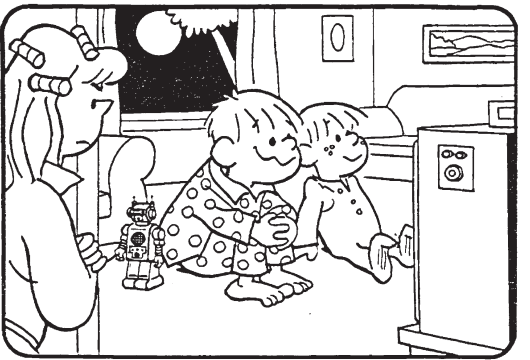
DIFFICULTY THIS WEEK: ★

★ Moderate ★★ Challenging
★★★ HOO BOY!

© 2013 King Features Synd., Inc.

HOCUS-FOCUS

BY HENRY BOLTIHOFF



CAN YOU TRUST YOUR EYES? There are at least six differences in drawing details between top and bottom panels. How quickly can you find them? Check answers with those below.

DIFFERENCES: 1. Center is missing; 2. Moon is missing; 3. Floor is missing; 4. Shoe is missing; 5. Picture is missing; 6. TV dial is missing.

Just Like Cats & Dogs

by Dave T. Phipps



MAGIC MAZE ● TEA

C O K H D A X U T Q N K H E B
Y V S P M J H I E B Y V T Q O
L I G D B Y U W T R P M K I F
D E B Y W C R U Y S Q O M K I
F D C B S O G Z Z L X W U S Q
O N L I L W A J O E H F D C A
Y C B R V T R A C W P W V T S
Q P A N L R D K M O O R I H F
E P G D C O E L T T E K T B Z
Y W V U D F N S S R Q P E N M
L J I H F Y T R A P O H S E D

Find the listed words in the diagram. They run in all directions forward, backward, up, down and diagonally.

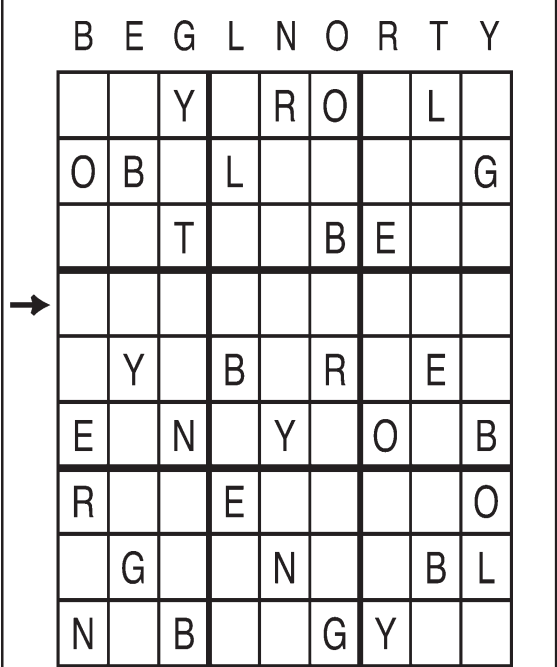
- | | | | |
|---------|---------|---------|-------|
| Bag | For two | Party | Set |
| Biscuit | Garden | Pots | Shop |
| Caddy | Kettle | Room | Towel |
| Cart | Parlor | Service | |

© 2013 King Features Synd., Inc.

Letter Box

by Linda Thistle

Place a letter in the empty boxes in such a way that each row across, each column down and each small 9-box square contains all of the letters listed above the diagram. When completed, the row indicated will spell out a word or words.



Even Exchange

by Donna Pettman

Each numbered row contains two clues and two 6-letter answers. The two answers differ from each other by only one letter, which has already been inserted. For example, if you exchange the A from MASTER for an I, you get MISTER. Do not change the order of the letters.

- | | | | |
|----------------------|-----------|-------------------|-----------|
| 1. Ringo, e.g. | ___ A ___ | Volkswagen | ___ E ___ |
| 2. Steeple | T ___ | Might | P ___ |
| 3. Ice | ___ S ___ | Facade | ___ N ___ |
| 4. Long for | Y ___ | Gain knowledge of | L ___ |
| 5. Lion's group | ___ D ___ | Cost | ___ C ___ |
| 6. Grocer's employee | ___ G ___ | Wisconsin animal | ___ D ___ |
| 7. Lemon kin | O ___ | Farmstead | G ___ |
| 8. Shoulder wrap | ___ O ___ | Old, like bread | ___ A ___ |
| 9. Hear | ___ E ___ | Boxer Sonny | ___ O ___ |
| 10. At no time | ___ V ___ | More recent | ___ W ___ |

© 2013 King Features Synd., Inc.

Salome's Stars

ARIES (March 21 to April 19) Your Aries charm helps persuade others to listen to your proposal. But it's still a long way from acceptance, unless you can stand up to the tough questions that are set to follow.

TAURUS (April 20 to May 20) Plan to share a weekend getaway from all the pressures of your hectic workaday world with a very special someone. You could be pleasantly surprised at what develops.

GEMINI (May 21 to June 20) Your keen insight once again helps you handle a challenging situation with a clearer perception of what it's really all about. What you learn helps you make a difficult decision.

CANCER (June 21 to July 22) If you want to steer clear of getting involved in a new family dispute, say so. Your stand might cause hurt feelings for some, but overall, you'll be respected for your honesty.

LEO (July 23 to August 22) Expect recognition for your efforts in getting a project into operation. Besides the more practical rewards, your Lion's heart will be warmed by the admiration of your colleagues.

VIRGO (August 23 to September 22) Set aside time to rid yourself of clutter that might well be drawing down your creative energies. Consider asking someone to help you decide what stays and what goes.

LIBRA (September 23 to October 22) A colleague could make a request that might place you in an awkward position with co-workers. Best advice: Share your concerns with an associate you can trust.

SCORPIO (October 23 to November 21) Your energy levels are way up, allowing you to take on the added challenge of a task you've been hoping to secure. Expect this move to lead to an important opportunity.

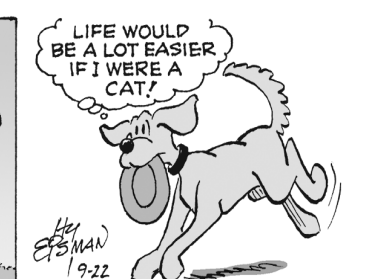
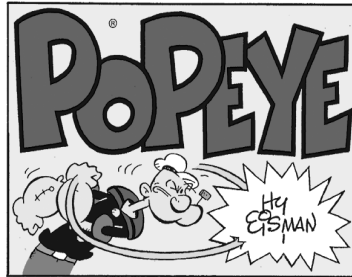
SAGITTARIUS (November 22 to December 21) Your continuing sense of confidence in what you've set out to do gives encouragement to others. Expect to see more people asking to add their efforts to yours.

CAPRICORN (December 22 to January 19) You might think it would be best to reject a suggestion others insist would be unworkable. But you might be surprised by what you find if you give it a chance.

AQUARIUS (January 20 to February 18) Changing a decision might disappoint some people, but the important thing is that you be honest with yourself. Don't go ahead with anything you have doubts about.

PISCES (February 19 to March 20) There could be some fallout from an emotional confrontation that you really should deal with before moving on. Best to start fresh with a clean, clear slate.

BORN THIS WEEK: Your honesty not only helps you make decisions for yourself, but also helps others find the right choices for themselves.



R.F.D.



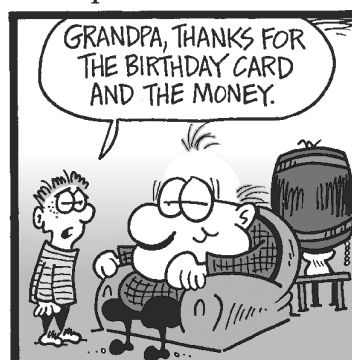
by Mike Marland

Amber Waves



by Dave T. Phipps

The Spats



by Jeff Pickering