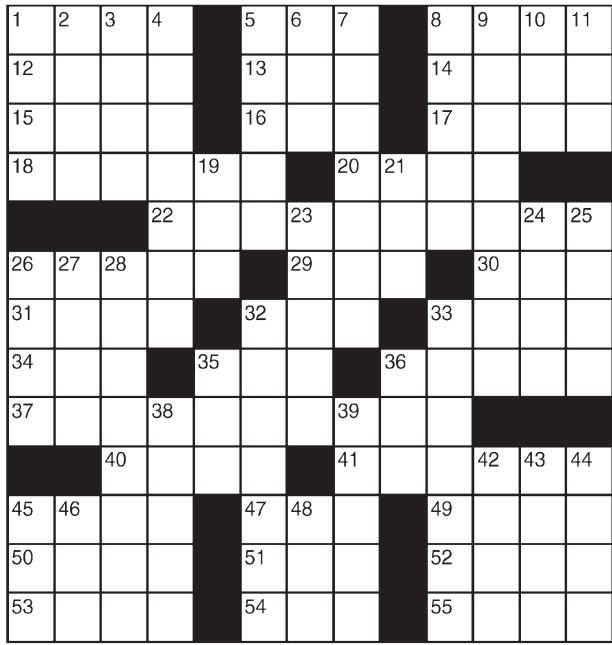


# King Crossword

## ACROSS

- 1 "— the night before ..."
- 5 Peace antithesis
- 8 Stage presentation
- 12 Rope material
- 13 Coloring
- 14 Queue
- 15 Banister
- 16 Ovum
- 17 One
- 18 Spread open
- 20 Bullets and such
- 22 Schedules
- 26 Reinforcing device
- 29 And so on (Abbr.)
- 30 Ambulance VIP
- 31 Solemn promise
- 32 Monokini's lack
- 33 Cougar
- 34 John's Yoko
- 35 — Lanka
- 36 One without a Y chromosome
- 37 Watches, e.g.
- 40 Mideast country
- 41 Tie on
- 45 Judy's



- daughter (Var.)
- 47 Grecian vessel
- 49 Vicinity
- 50 Top pair, maybe
- 51 Aachen article
- 52 Heart of the matter
- 53 Unembellished
- 54 Plaything
- 55 Chows down
- 4 Mark with a stain of color
- 5 Cover completely
- 6 Summer mo.
- 7 Boat race
- 8 Vertical
- 9 Kitchen flooring
- 10 Singer DiFranco
- 11 Still
- 19 Whopper
- 21 PC alternative
- 23 Inducing gooseflesh
- 24 Austen heroine
- 25 Ollie's pal
- 26 Italy's silhouette
- 27 Royal of India
- 28 Perfume dispenser
- 32 Block of charcoal
- 33 Stamps
- 35 Hot tub
- 36 Moist
- 38 Obliterate
- 39 Shrewd
- 42 Met melody
- 43 "— la vie"
- 44 Millinery
- 45 Felon's flight
- 46 Lemieux milieu
- 48 Carnival city

© 2013 King Features Synd., Inc.

## Just Like Cats & Dogs by Dave T. Phipps



## MAGIC MAZE ● SUPER BOWL STARTING QUARTERBACKS

S Y V R O L C I F C Z W T Q N  
 K I F C Z O W U R P M J H E C  
 Z X U Y L B S Q N L J G E C Z  
 G X V L D R W T R P H N L J H  
 G N I N N A M P N C T E C A Y  
 W N I U R D R V A A A T R P N  
 S L K N I S G B E Y M F C B Z  
 X W E I N H U U S R A K P O M  
 R R A T S A L J I V N W I G E  
 D B A A T W M B R E E S L A Y  
 X W U S T S R E G D O R N E B

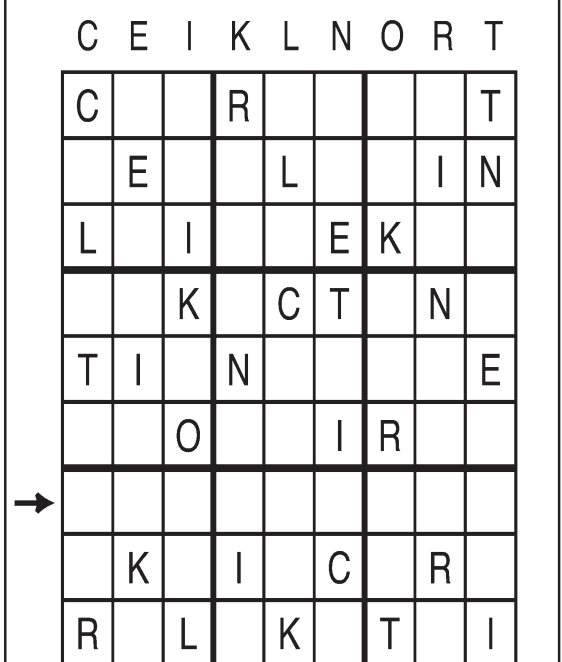
Find the listed words in the diagram. They run in all directions - forward, backward, up, down and diagonally.

- |          |            |            |          |
|----------|------------|------------|----------|
| Aikman   | Collins    | Namath     | Staubach |
| Bradshaw | E. Manning | P. Manning | Unitas   |
| Brady    | Elway      | Rodgers    | Warner   |
| Brees    | Favre      | Starr      |          |

© 2013 King Features Synd., Inc.

## Letter Box by Linda Thistle

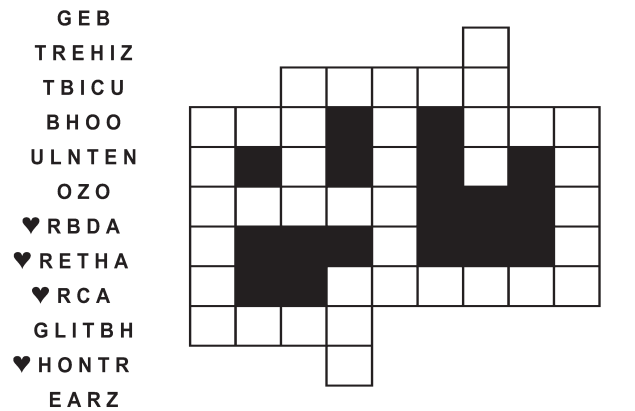
Place a letter in the empty boxes in such a way that each row across, each column down and each small 9-box square contains all of the letters listed above the diagram. When completed, the row indicated will spell out a word or words.



# FEAR KNIGHT

By rj johnson

CONQUER THE WHIRLED



Unscramble these twelve letter strings to form each into an ordinary word (ex. HAGNEC becomes CHANGE). Prepare to use only ONE word from any marked (♥) letter string as each unscrambles into more than one word (ex. ♥RATHA becomes HATER or EARTH or HEART). Fit each string's word either across or down to knot all twelve strings together.

## Puzzles4Kids by Helene Hovanec

### WORD FUN

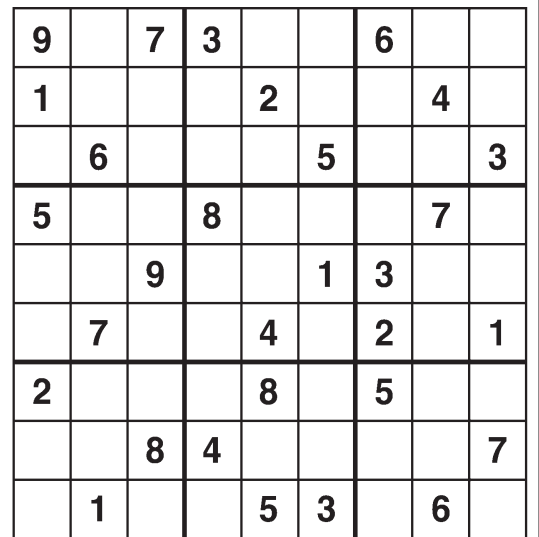
Study the two words on each line to find the ONE letter in the left column that is NOT in the word in the right column. Write the extra letter on the blank space. Then read DOWN to answer this riddle:

- HOW ARE TEDDY BEARS AND TURKEYS ALIKE?**
- |        |   |       |        |   |       |
|--------|---|-------|--------|---|-------|
| BINDER | — | DINER | SMILES | — | LIMES |
| DRAGON | — | GRAND | TASTED | — | DATES |
| ALBERT | — | BLARE | PURSUE | — | SUPER |
| THEIRS | — | TIRES | SOFTEN | — | NOTES |
|        |   |       | WAFERS | — | WEARS |
| SHRANK | — | RANKS | TIDIES | — | DIETS |
| OPERAS | — | PORES | NORMAL | — | MOLAR |
| CAVERN | — | CRANE | GATHER | — | EARTH |
| REDONE | — | DRONE |        |   |       |

For more puzzle fun, go to [www.brainzles.com](http://www.brainzles.com)

# Weekly SUDOKU

by Linda Thistle



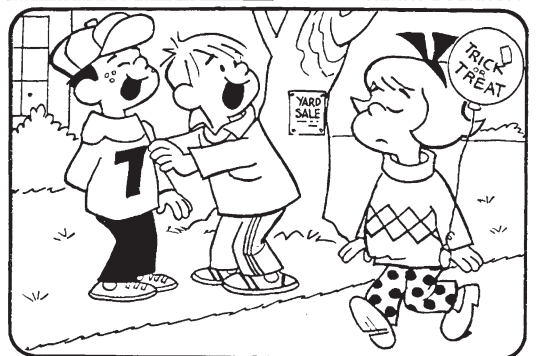
Place a number in the empty boxes in such a way that each row across, each column down and each small 9-box square contains all of the numbers from one to nine.

## DIFFICULTY THIS WEEK: ★★★

★ Moderate ★★ Challenging  
 ★★★ HOO BOY!

© 2013 King Features Synd., Inc.

## HOCUS-FOCUS BY HENRY BOLTONOFF



Differences: 1. Cap is different; 2. Stripe is missing; 3. Sign is missing; 4. Bow tie is smaller; 5. Balloon is missing; 6. Sweater design is different.

## Even Exchange by Donna Pettman

Each numbered row contains two clues and two 6-letter answers. The two answers differ from each other by only one letter, which has already been inserted. For example, if you exchange the A from MASTER for an I, you get MISTER. Do not change the order of the letters.

- |                         |                 |                  |                 |
|-------------------------|-----------------|------------------|-----------------|
| 1. Combat               | — A — — — —     | Soda container   | — O — — — —     |
| 2. Theme                | — — P — — —     | Gin's partner    | — — N — — —     |
| 3. — Adkins             | — — — — E — —   | Racing path      | — — — — K — —   |
| 4. Terror               | — R — — — —     | Bird's talent    | — — L — — —     |
| 5. Hawaii or Alaska     | — — — — T — —   | Gawk             | — — — — R — —   |
| 6. Safe place           | H — — — —       | Poe's bird       | R — — — —       |
| 7. Seinfeld's specialty | — — — — D — —   | Attractive       | — — — — L — —   |
| 8. Banker, sometimes    | — — — — N — —   | Person in charge | — — — — A — —   |
| 9. Subtraction sign     | — — — — I — —   | Bills of fare    | — — — — E — —   |
| 10. Put through a sieve | — — — — — N — — | Gibraltar, e.g.  | — — — — — T — — |

© 2013 King Features Synd., Inc.

## Salome's Stars

**ARIES** (March 21 to April 19) You enjoy the attention early in the week, but it might be a good idea to opt for some privacy by week's end so that you can have more time to consider an upcoming decision.

**TAURUS** (April 20 to May 20) You unearthed some surprising facts. Now you need to consider how to use them to your advantage. Meanwhile, it might be best to keep what you've learned secret for now.

**GEMINI** (May 21 to June 20) A comment by a colleague piques your curiosity to know more. Best advice: You'll find people more likely to offer information if you're discreet when making your inquiries.

**CANCER** (June 21 to July 22) Your energy levels begin to rise by midweek. This allows you to catch up with your heavy workload and still have plenty of get-up-and-go to go out on the town this weekend.

**LEO** (July 23 to August 22) You're probably roaring your head off about a perceived slight from a longtime critic. Ignore it. That person might just be trying to goad you into doing something you might later regret.

**VIRGO** (August 23 to September 22) The early part of the week is open to spontaneity. Then it's time to settle into your usual routine to get all your tasks done. A personal situation could require more attention from you.

**LIBRA** (September 23 to October 22) A meeting of the minds on a workplace project might well develop into something more personal for Librans looking for romance. Aspects are also favorable for platonic relationships.

**SCORPIO** (October 23 to November 21) A more-positive mood might be difficult to assume in light of a recent problem involving the health of someone special. But by week's end, your emotional barometer should start to rise.

**SAGITTARIUS** (November 22 to December 21) Look for a changed attitude from a former adversary once he or she realizes you have your colleagues' full support. Now you can refocus your energies on that workplace project.

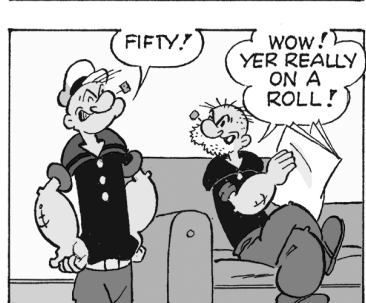
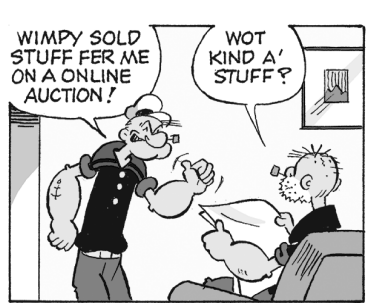
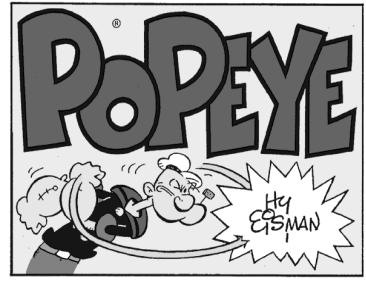
**CAPRICORN** (December 22 to January 19) This time, a difference of opinion might not be resolved in your favor. But be patient. It ultimately could all work out to your advantage, as new information begins to develop.

**AQUARIUS** (January 20 to February 18) A tug of war develops between the artistic Aquarian's creative aspect and his or her practical side. Best advice: Prioritize your schedule so you can give appropriate time to both.

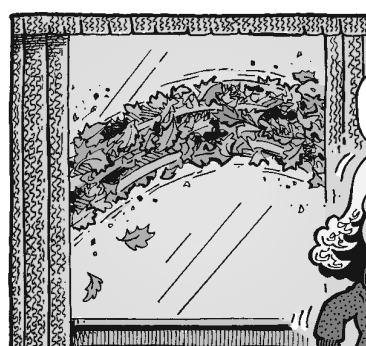
**PISCES** (February 19 to March 20) You could be entering a career phase awash with job-related demands. But avoid being swamped by the overflow and, instead, keep treading water as you deal with demands one by one.

**BORN THIS WEEK:** You are an exceptionally loyal person, and you're respected for your ability to keep the secrets entrusted to you.

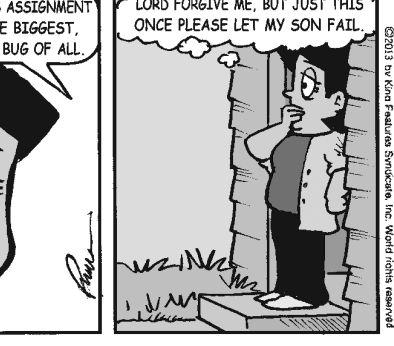
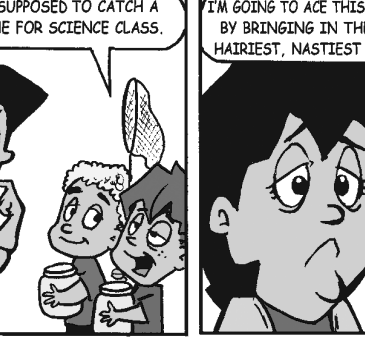
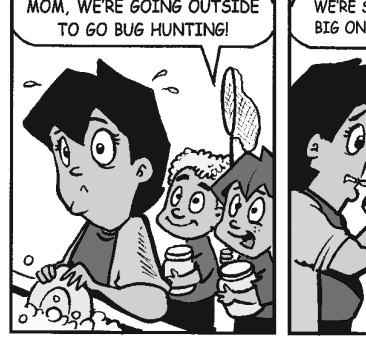
© 2013 King Features Syndicate Inc.



## R.F.D. by Mike Marland



## Amber Waves by Dave T. Phipps



## The Spats by Jeff Pickering

