

Estill Band and Soccer Teams Make History

It's been a full and exciting week in Estill County with the Estill County Marching Band, the Estill County Girls Soccer Team and the Estill County Boys Soccer Team making history.

Although it is disappointing that the teams could not advance further, afterwards, they can look back and see they have accomplished a lot this year.

Estill's band finished 5th in the state in competition on Saturday, but they had expected to do much better.

The band finished at the top in the East AA the previous week at Bourbon County, but Christian Academy of Louisville moved ahead of them to 4th place and three Western Kentucky bands took the top three honors.

"After what was clearly the most incredible performance of the year, the

band placed 5th in the state in class 2A" said director Jason Bowles. "This is the highest finish of any band in the history of the program."

Estill's boys soccer team played on Monday night at home in the state tournament but came up short 3-0 against Johnson Central.

The boys got into the state tourney by winning the 14th Region in a shootout with Perry County Central, 3-2. The two teams had earlier tied at the end of regulation during the season.

Coaches Tim Tipton and Greg Witt's team finished 14-5-3, the best season ever for an Estill boys soccer team.

Estill's girls hoped to win the 14th Region after coming up runner-up last year but fell short and took runner-up in 2013 as well.

Coach Candie Mc-Maine's team finished 12-6-1 after finishing their best

season ever last year with an 11-4-1 record.

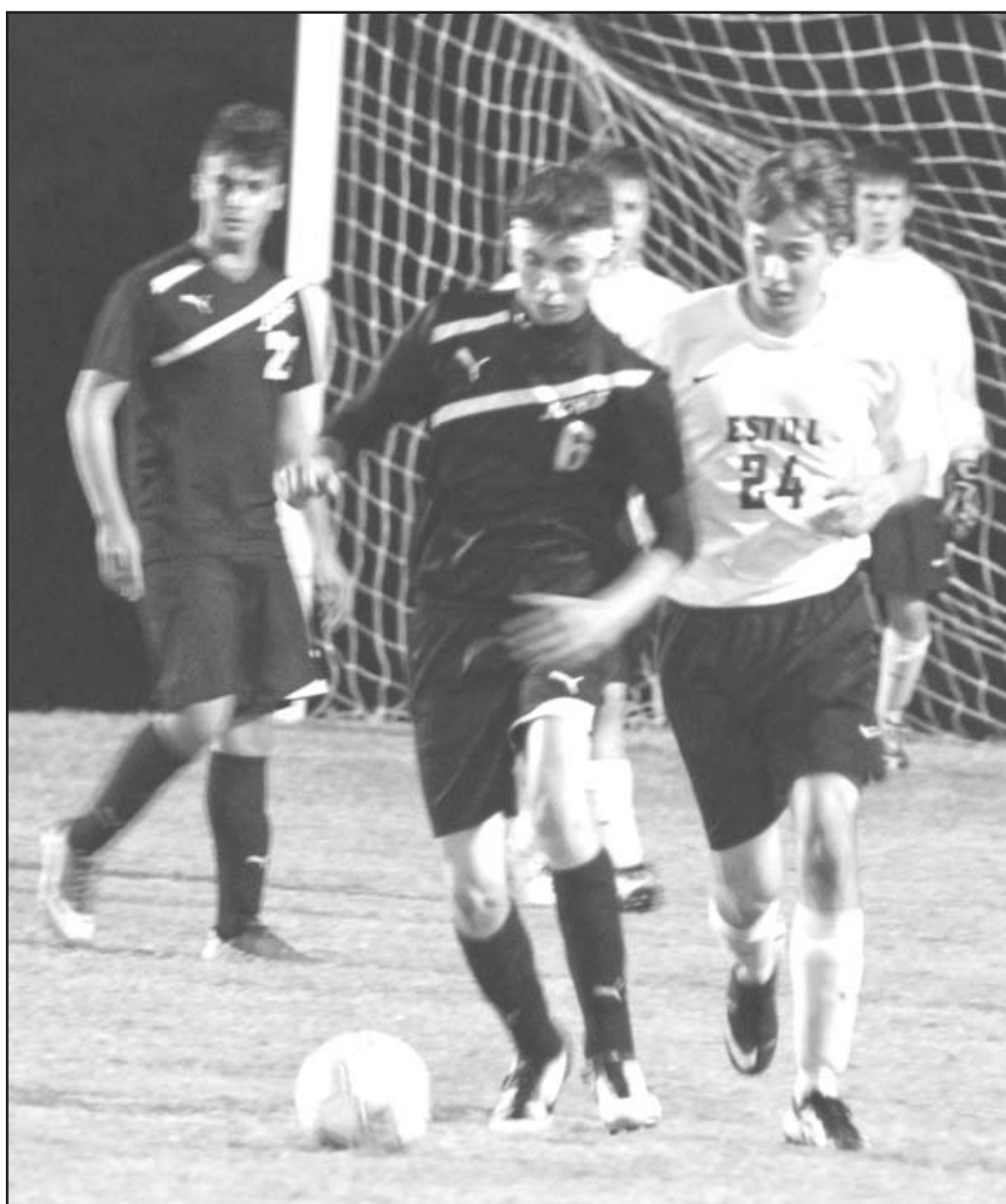
The Estill County Engineers football team had a chance at a home-field playoff game but could not handle Garrard County, losing 34-7 at Hoover Niece Field.

That leaves the Engineers with one more game, away in far Southern Kentucky against McCreary County Central.

This game on Friday should be a good time to regroup the Engineers as McCreary has not won a game all season. In fact, they are one of the least offensive teams in the state with only 26 points in 9 games with 462 on defense.

Estill will travel to Russell in Northeast Kentucky on November 8th to take on 6-3 Russell, the second place team in the sister district.

Good luck Engineers.



#24 Travis Neal worked hard to get the ball away from a Johnson Central player on Monday night during the first game of the championship. The Engineers fell short to Johnson Central after a hard fought battle with a final score of Johnson Central 3 and Engineers 0.



The Estill County Engineers football team took a timeout on Friday night at Hoover Niece Field but could not come up with a way to handle the Garrard County Golden Lions. Estill lost 34-7 but will still be in the playoffs.



Monday night's game against Johnson Central proved to be a battle for both teams. Players for Estill County as well as Johnson Central sustained minor injuries during the game as they fought for their place in the next round of championship games.

SUNDAY

Daylight Saving Time ENDS NOV. 3

© 2013 by King Features Syndicate, Inc. World rights reserved.

ONLY SIX WEEKS REMAIN!
 Before GED test scores expire
NEW evening math classes
6:00-8:00 PM
Call 723-7323
The GED changes Dec. 18th
Present scores will not be valid

Region B Rural Health Offices Meet In Lexington & Irvine

State Office of Rural Health (SORH) staff from Alabama, Arkansas, Florida, Georgia, Kentucky, Louisiana, Mississippi, North Carolina, South Carolina, Tennessee, Virginia and West Virginia recently convened in Lexington, Kentucky for the National Organization of State Offices of Rural Health (NOSORH) Region B Annual Meeting.

Also present were staff members from NOSORH, Rural Assistance Center, National Rural Health Resource Center and HRSA's Office of Rural Health Policy (ORHP).

Speakers included both national and local experts including Fran Feltner- University of Kentucky Center of Excellence in Rural Health, John Gale- Maine Rural

Health Research Team, Dr. Alison Davis- UK Community and Economic Development Initiative of Kentucky, Scott Ekblad- NOSORH President and HRSA ORHP Project Officers, Bridget Ware and Sarah Young.

Perhaps the highlight of the meeting was the site visit to Marcum and Wallace Memorial Hospital in rural Irvine, KY. The group

was welcomed by hospital CEO Susan Starling during a working luncheon at Michael's.

Susan discussed the history of Marcum and Wallace and detailed the obstacles and strategies that led the hospital to be named a Top 100 Critical Access Hospital in the United States. The group then made way to the hospital campus for presen-

tations on "Rural Health Networks", "Quality Performance" and "Level IV Trauma Designation." Hospital tours and a mock trauma exercise completed the visit.

"We wanted to take this opportunity to showcase the achievements of Susan and her staff. They have exemplified how a rural hospital should be operated by providing quality patient care

and involving their communities, said Larry Allen, Director of the Kentucky Office of Rural Health.

"Estill County and the community of Irvine should be very proud of this hospital and their staff. This collaborative effort between hospital and community can only result in positive outcomes for healthcare and economic development in the future."



Larry Allen, Director of the Kentucky Office of Rural Health introduces Susan Starling, President/CEO of Marcum & Wallace Memorial Hospital to the group of Directors from the State Office of Rural Health Region B.



Tina Hix, Director of Laboratory Services at Marcum & Wallace Memorial Hospital leads a group on a tour of the hospital facility.



Susan Starling, President/CEO of Marcum & Wallace Memorial Hospital gives a presentation at Michael's Restaurant on the history of MWMH.