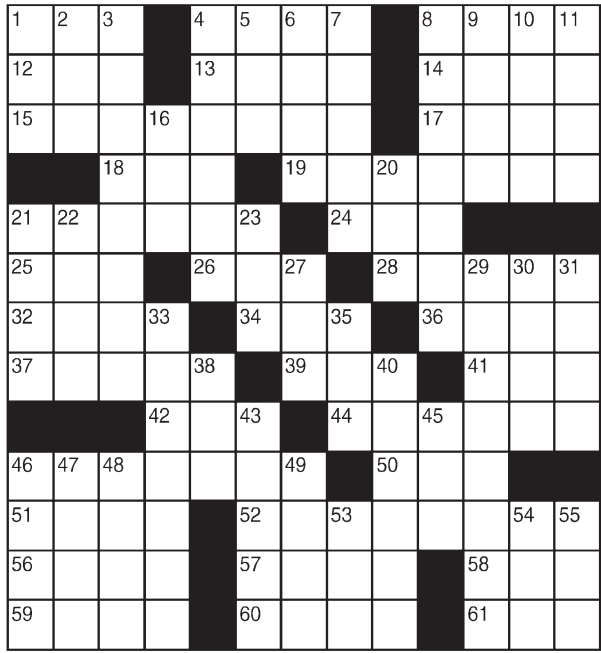


King Crossword

ACROSS

- 1 Distant
- 4 Primary
- 8 — vu
- 12 "Rocks"
- 13 Bullets and the like
- 14 Mosque bigwig
- 15 Blood group?
- 17 Tarzan's transport
- 18 Diving bird
- 19 Substantial bodies of work
- 21 Cronkite or Brennan
- 24 Parched
- 25 Beer's cousin
- 26 Cratchit lad
- 28 Medical worker
- 32 Apparel
- 34 Chum
- 36 Bartlett or Bosc
- 37 Don't slouch
- 39 Steal from
- 41 Cacophony
- 42 Pantheon member
- 44 Ping-Pong need
- 46 Parade of a sort
- 50 Not many
- 51 Common rhyme scheme
- 52 Warnings



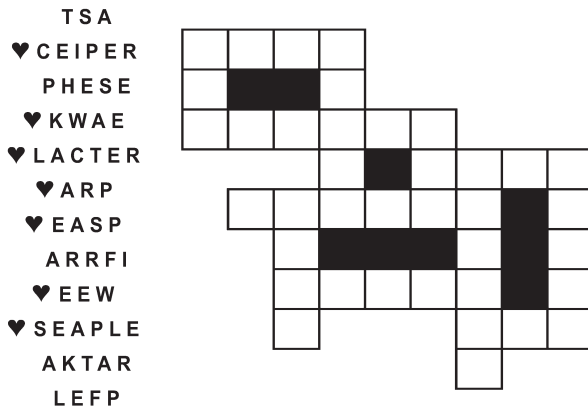
- 56 Nevada city
 - 57 — & the Gang
 - 58 Knock
 - 59 Lily type
 - 60 Formerly
 - 61 Aviate
- DOWN**
- 1 Christmas tree, often
 - 2 Expert
 - 3 Period of imminent danger
 - 4 Sell
 - 5 I love (Lat.)
 - 6 Pointer Sisters' "— Excited"
 - 7 Snooped
 - 8 Split evenly
 - 9 Mideast ruler
 - 10 "— Eyre"
 - 11 Iowa city
 - 16 Snip
 - 20 Coffee shop vessel
 - 21 Moves back and forth
 - 22 Jai follower
 - 23 Tear
 - 27 Ruin the veneer
 - 29 Low-temp star
 - 30 Take to the seas
 - 31 Sea eagle
 - 33 Imaginary cause of fear
 - 35 Prune
 - 38 Camera-person's angle (Abbr.)
 - 40 Confound
 - 43 2001 movie, "Donnie —"
 - 45 First st.
 - 46 Jam ingredients?
 - 47 Have — in one's bonnet
 - 48 Pealed
 - 49 Night light
 - 53 Elmer, to Bugs
 - 54 Guy's companion
 - 55 Agent

© 2013 King Features Synd., Inc.

FEAR KNOT

By: rj johnson

CONQUER THE WHIRLED



Unscramble these twelve letter strings to form each into an ordinary word (ex. HAGNEC becomes CHANGE). Prepare to use only ONE word from any marked (♥) letter string as each unscrambles into more than one word (ex. ♥RATHE becomes HATER or EARTH or HEART). Fit each string's word either across or down to knot all twelve strings together.

Puzzles4Kids

by Helene Hovanec

CODER RIDDLE

Change each letter to the one that comes immediately BEFORE it in the alphabet to find a riddle and its answer.

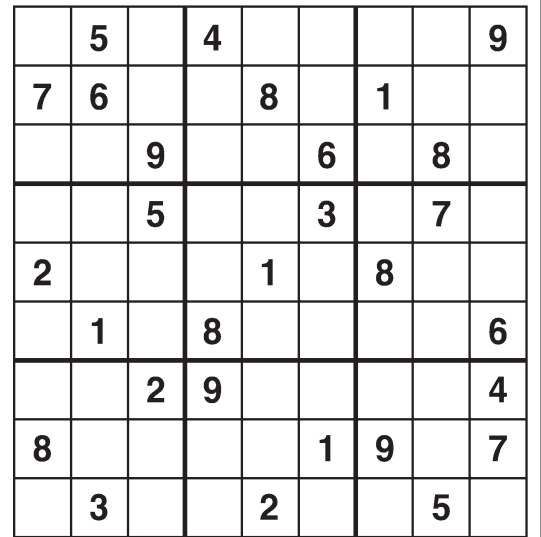
Here's a copy of the alphabet to guide you:

ABCDEFGHIJKLMN OPQRSTUVWXYZ
 XIZ JT UIBOLTHJWJOH B WFSZ
 TNBSU IPMJBZ? CFDBVTF JU
 JT JO LOPX WFNCF S.

For more puzzle fun, go to www.brainzles.com

Weekly SUDOKU

by Linda Thistle



Place a number in the empty boxes in such a way that each row across, each column down and each small 9-box square contains all of the numbers from one to nine.

DIFFICULTY THIS WEEK: ★

★ Moderate ★★ Challenging
 ★★★ HOO BOY!

© 2013 King Features Synd., Inc.

HOCUS-FOCUS

BY HENRY BOLTINOFF



CAN YOU TRUST YOUR EYES? There are at least six differences in drawing details between top and bottom panels. How quickly can you find them? Check answers with those below.

Just Like Cats & Dogs

by Dave T. Phipps



MAGIC MAZE • TEA



Find the listed words in the diagram. They run in all directions - forward, backward, up, down and diagonally.

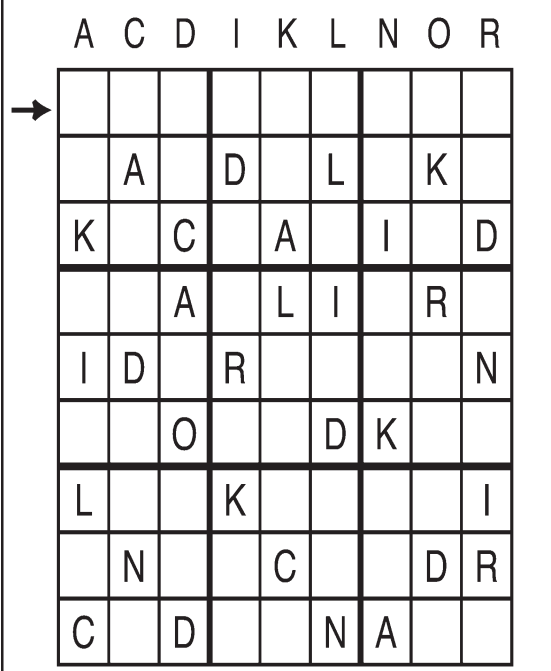
- Bag
- Biscuit
- Caddy
- Cart
- For two
- Garden
- Kettle
- Parlor
- Party
- Pots
- Room
- Service
- Set
- Shop
- Towel

© 2013 King Features Synd., Inc. All rights reserved

Letter Box

by Linda Thistle

Place a letter in the empty boxes in such a way that each row across, each column down and each small 9-box square contains all of the letters listed above the diagram. When completed, the row indicated will spell out a word or words.



Even Exchange

by Donna Pettman

Each numbered row contains two clues and two 6-letter answers. The two answers differ from each other by only one letter, which has already been inserted. For example, if you exchange the A from MASTER for an I, you get MISTER. Do not change the order of the letters.

- 1. City bigwig — — — — Y — — — Estate — — — — N — — —
- 2. Law officer — — — — C — — — — Showing manners — — — — A — — — — T — — —
- 3. Thirsty cloth — — — — E — — — — Dawdle — — — — A — — — — K — — —
- 4. Burst of fire — — — — R — — — — Fragment of snow — — — — N — — — — T — — —
- 5. Change places — — — — W — — — — Stoolpigeon — — — — N — — — — T — — —
- 6. Junction — — — — — — — — R — — — — Trumpet's kin — — — — — — — — T — — —
- 7. Love goddess — — — — — — — — U — — — — Flues — — — — — — — — T — — —
- 8. Oz leader W — — — — — — — — — — — — — — Gecko or iguana L — — — — — — — —
- 9. Fall bloomer — — — — — — — — S — — — — — — — — Modify — — — — L — — — —
- 10. Sink bowl — — — — — — — — N — — — — — — — — Aromatic herb — — — — — — — — L — — — —

© 2013 King Features Synd., Inc.

Salome's Stars

ARIES (March 21 to April 19) Your Arian penchant for impatience shows, as you consider passing a problem-prone project on to someone else. Best advice: Stay with it and work out those snarls yourself.

TAURUS (April 20 to May 20) Even patient Bovines can be frustrated when carefully made plans go awry. But crank up that "stick-to-it-ivity" you do so well, and you'll soon find that your schedule is back in sync.

GEMINI (May 21 to June 20) Your aspect favors using more resourceful means in dealing with a workplace situation. Some discreet checking around could help shed light on the root cause of the problem.

CANCER (June 21 to July 22) You show an unusually strong streak of stubbornness in rejecting suggestions from friends and/or family members early in the week. But you become more receptive by the week's end.

LEO (July 23 to August 22) The Big Cat might find a gentler approach more effective when dealing with those who resist needed changes. Remember, the word "persuasion" starts with the sound "purr."

VIRGO (August 23 to September 22) A disappointing experience with someone you felt you could trust can be painful. But there just might be more to this situation than you're aware of. Press for an explanation.

LIBRA (September 23 to October 22) Changing your views about something you believe in isn't easy. But you might reconsider as the facts come in. Keep your mind open, even if you're uneasy about what you might learn.

SCORPIO (October 23 to November 21) You might have to do some serious shifting of gears to get your project back on track. But cheer up. Your hard work starts to produce some positive results by the week's end.

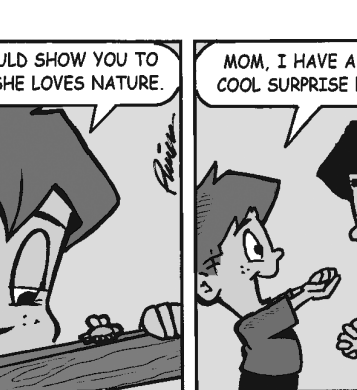
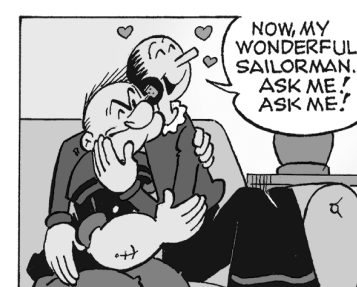
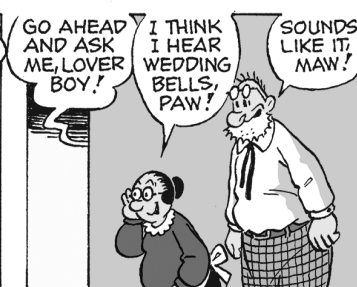
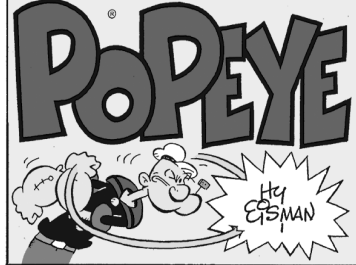
SAGITTARIUS (November 22 to December 21) An unsettling mood at the start of the week soon lifts and gives way to a more positive attitude as you find fun and friendship beginning to dominate your aspect.

CAPRICORN (December 22 to January 19) A delay in firming up holiday plans could work to your advantage. Use this time to scout out possibilities that might be more in line with what those close to you would prefer.

AQUARIUS (January 20 to February 18) Some people might question some of the new friends you've welcomed into your life. But your ability to see beyond the obvious helps you recognize how special they are.

PISCES (February 19 to March 20) Financial matters can be especially tricky this week. It's best to follow a conservative investment path for now, and wait for a more fortuitous time to take a bolder approach.

BORN THIS WEEK: Your warmth, your humor and your genuine concern for others make you someone people love to keep close to their lives.



© 2013 King Features Synd., Inc.