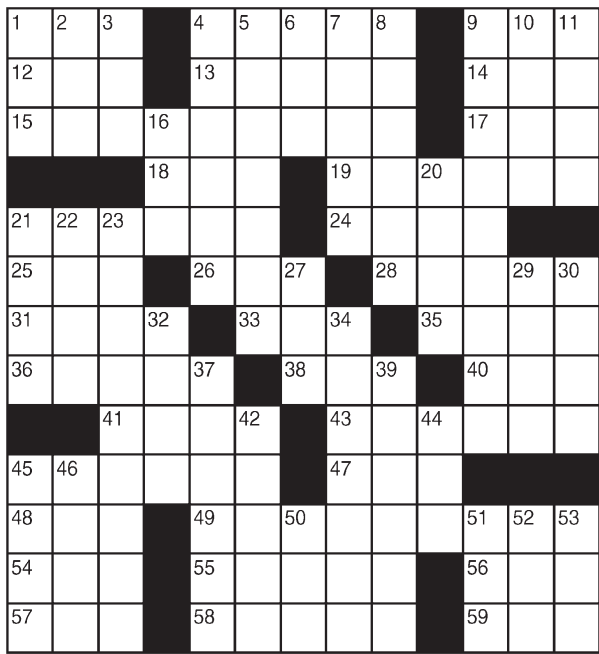


King Crossword

ACROSS

- 1 Use the couch
- 4 Fidel Castro, e.g.
- 9 Picks out of a lineup, briefly
- 12 Japanese pond carp
- 13 Last Greek letter
- 14 Ultramoder-nist
- 15 Office-holder
- 17 Pitcher's topper
- 18 Apiece
- 19 Merman and Mertz
- 21 Label



- 24 Gets a gander at
- 25 Fellow
- 26 Pvt.'s superior
- 28 Takes five
- 31 Snapshots
- 33 Finish
- 35 Willy Wonka's creator
- 36 Narrow cuts
- 38 Sleuth, for short
- 40 Born
- 41 — moss
- 43 Fed well, as a Biblical calf
- 45 Twist in pain

- 47 Mrs. McKinley
- 48 Coloration
- 49 Rainy, perhaps
- 54 Hostel
- 55 Surround
- 56 Sticky stuff
- 57 Encountered
- 58 Uses a swizzle stick
- 59 Rhyming praise
- 6 Spelling contest
- 7 Actress Moorehead
- 8 Talk on and on
- 9 Nonstop
- 10 Transaction
- 11 Bribes
- 16 — and
- 20 Pay attention
- 21 Rock band's gear
- 22 Bar
- 23 Just beginning
- 27 Explosive letters
- 29 You
- 30 Coaster
- 32 Undo a dele
- 34 Graffiti writer, e.g.
- 37 Masters, in old India
- 39 West
- 42 Doctrine
- 44 Scot's chapeau
- 45 Caprice
- 46 Mysterious character
- 50 Vegas-based crime show
- 51 Swelled head
- 52 Agree silently
- 53 Part of the foot

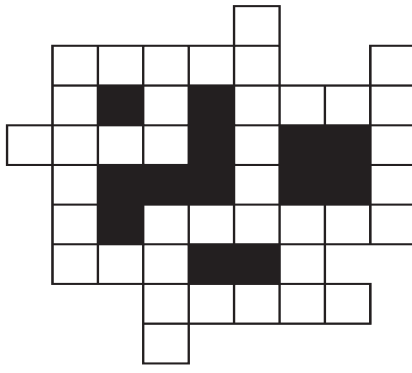
© 2013 King Features Synd., Inc.

FEAR KNOT

By: rj johnson

CONQUER THE WHIRLED

- OWW
- ♥ WYNAUR
- AFIMA
- ♥ ASMW
- SNAFET
- ♥ EAY
- YIWL
- WOFNR
- AFY
- LYMINA
- ♥ LYMPA
- ♥ FTRA

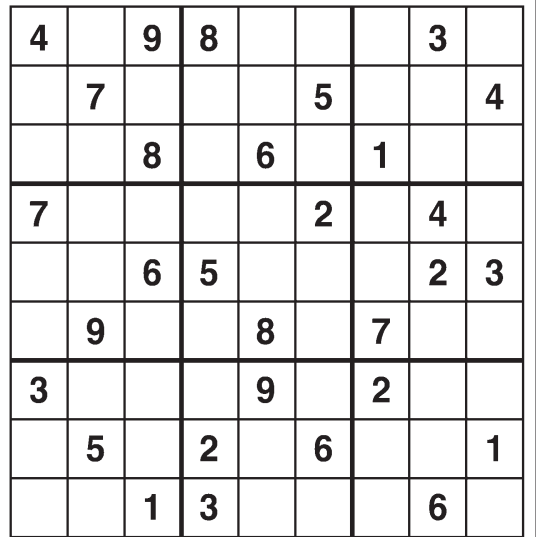


Unscramble these twelve letter strings to form each into an ordinary word (ex. HAGNEC becomes CHANGE). Prepare to use only ONE word from any marked (♥) letter string as each unscrambles into more than one word (ex. ♥RATHE becomes HATER or EARTH or HEART). Fit each string's word either across or down to knot all twelve strings together.

© 2013 King Features Syndicate, Inc. All rights reserved.

Weekly SUDOKU

by Linda Thistle



Place a number in the empty boxes in such a way that each row across, each column down and each small 9-box square contains all of the numbers from one to nine.

DIFFICULTY THIS WEEK: ★★★

★ Moderate ★★ Challenging
★★★ HOO BOY!

© 2013 King Features Synd., Inc.

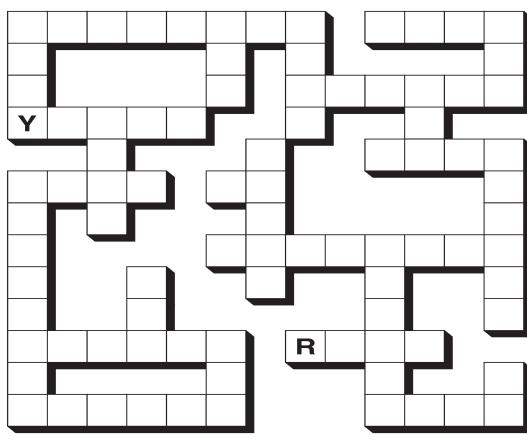
Puzzles4Kids

by Helene Hovanec

CRISSCROSS - QUICK SENTENCES

Each word will fit into one spot in the grid. Use the starting letters as a guide and fit each word into its spot. All words will be used, so cross off each one after you put it into the grid.

- 2 Letters OH YI
- 3 Letters AHAI EATI HUIH? RUN! TRY!
- 4 Letters COO EASY! I WON! MINE OKAY! OUCH! RATS! WHEN?
- 5 Letters NO WAY! YUCKY!
- 6 Letters AT LAST! DONT GO! HOORAY! NOT NOW! SO WHAT?
- 8 Letters CALM DOWN! IN A FLASH! OF COURSE!



For more puzzle fun, go to www.brainzles.com

Just Like Cats & Dogs

by Dave T. Phipps



MAGIC MAZE ● ALL FLY A RED, WHITE AND BLUE FLAG

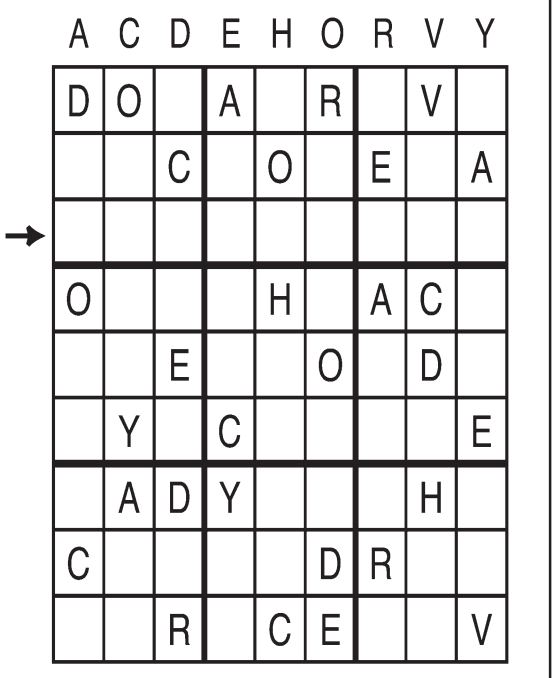
Y N J G C Z W P T Q N J G D A
X U R O L J G A A D A X V S P
N U N I T E D K I N G D O M K
I F C E L C A N T D A X V N D
S Q O I P N L A A S O M J A N
H E H C A A X V O L T B A W A
R C P N L R L A R M I J M I L
H F D B Y F L X C A A A S A E
V T R P O M K I G E B S H T C
D B Z X W U T R Q O U N T I
L J I G F D Y A W R O N C C A

Find the listed words in the diagram. They run in all directions - forward, backward, up, down and diagonally.

Letter Box

by Linda Thistle

Place a letter in the empty boxes in such a way that each row across, each column down and each small 9-box square contains all of the letters listed above the diagram. When completed, the row indicated will spell out a word or words.

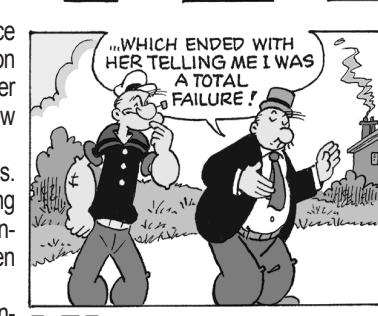
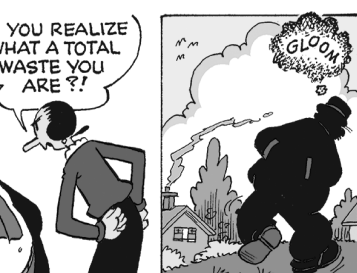
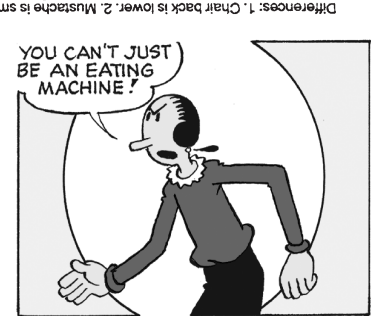
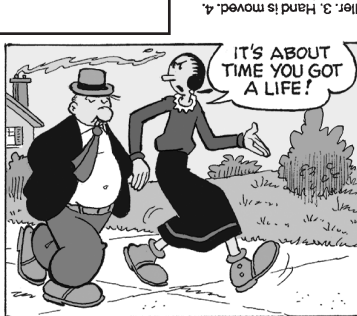
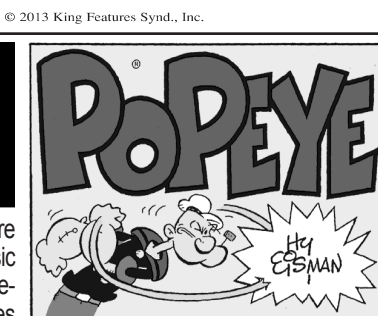


Even Exchange

by Donna Pettman

Each numbered row contains two clues and two 6-letter answers. The two answers differ from each other by only one letter, which has already been inserted. For example, if you exchange the A from MASTER for an I, you get MISTER. Do not change the order of the letters.

- | | | | |
|--------------------|-----------|------------------------|-----------|
| 1. Acclimatize | ___ A ___ | Take as one's own | ___ O ___ |
| 2. Beach wear | ___ I ___ | Riding a two-wheeler | ___ G ___ |
| 3. Decipher | ___ O ___ | Lotion | ___ A ___ |
| 4. Realm | E ___ | Baseball official | ___ U ___ |
| 5. Timepiece | ___ C ___ | Cape | ___ A ___ |
| 6. Float aimlessly | ___ I ___ | Light breeze | ___ A ___ |
| 7. Baby's cloth | ___ A ___ | Ladle | ___ P ___ |
| 8. Twisted cord | ___ N ___ | Two times | ___ C ___ |
| 9. The very edge | ___ K ___ | Fetch | ___ G ___ |
| 10. James Fenimore | ___ P ___ | Cold storage container | ___ L ___ |



R.F.D. by Mike Marland



Amber Waves

by Dave T. Phipps



The Spats

by Jeff Pickering



Salome's Stars

ARIES (March 21 to April 19) The arts are a strong part of the Arian aspect, with music becoming more dominant. An important decision looms as a longtime relationship takes an unexpected turn.

TAURUS (April 20 to May 20) Surrounding yourself with beautiful things helps restore the Taurean soul. Enjoy an art exhibit, for example. Or redecorate your personal space with something truly splendid.

GEMINI (May 21 to June 20) Some colleagues might try to talk you out of what they insist is a risk, but which you consider an opportunity. As usual, follow your own good sense when making your decision.

CANCER (June 21 to July 22) A workplace change you might have worried about soon proves to be highly favorable for the clever Crab who is ready to take advantage of new opportunities opening up.

LEO (July 23 to August 22) Congratulations. Your Leonine pride is polished to a dazzling new brilliance thanks to your success in winning support for your new project from even the most doubtful of detractors.

VIRGO (August 23 to September 22) An unsettling rumor about a colleague's apparently regrettable behavior is soon proved groundless, allowing you to enjoy the upcoming end-of-year festivities in a happy mood.

LIBRA (September 23 to October 22) Your success in helping to create a harmonious environment out of a chaotic situation earns you the admiration of someone who could become an important new presence in your life.

SCORPIO (October 23 to November 21) Your Scorpion's sense of loyalty could find you leading a passionate defense of a loved one you feel is being unfairly treated. The week's end brings long-awaited family news.

SAGITTARIUS (November 22 to December 21) Your keen instincts are once more on high alert as you find yourself being pressured to make a quick decision about a certain matter. More facts come to light by week's end.

CAPRICORN (December 22 to January 19) An unexpected workplace development could disrupt some family plans. A full explanation, however, averts domestic discord. A financial matter continues to need attention.

AQUARIUS (January 20 to February 18) Spend time away from distractions to reassess some recent moves that might not have worked out as you had hoped. What you learn could be invaluable for future decision-making.

PISCES (February 19 to March 20) A recent act of kindness is a reminder of how important your friends are to you. You might want to show your appreciation by hosting a special pre-New Year's party just for them.

BORN THIS WEEK: You always try to do your best, which sometimes causes you to be critical of those who don't live up to your standards.