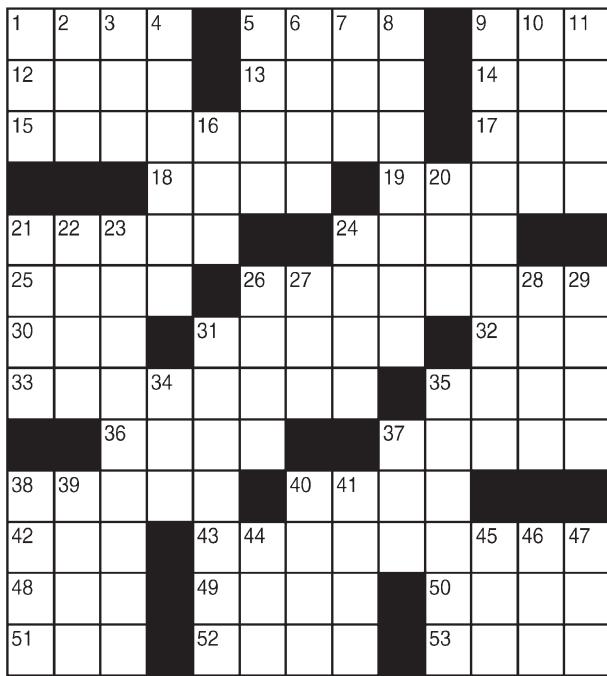


King Crossword

ACROSS

- 1 United nations
- 5 Half (Pref.)
- 9 TV overseer (Abbr.)
- 12 Pearl Harbor site
- 13 Former mates
- 14 Carte lead-in
- 15 Honesty of purpose
- 17 Charged bit
- 18 Sudden rush of wind
- 19 Glossy alternative
- 21 Earth tone
- 24 Apiece
- 25 Hammer's target
- 26 As one
- 30 Web address
- 31 Melodic
- 32 Anger
- 33 Individuality
- 35 Error
- 36 Very dry, as champagne
- 37 Cock and bull
- 38 Figure of speech
- 40 Suitor
- 42 - canto
- 43 Nightstick
- 48 Ailing
- 49 Love god



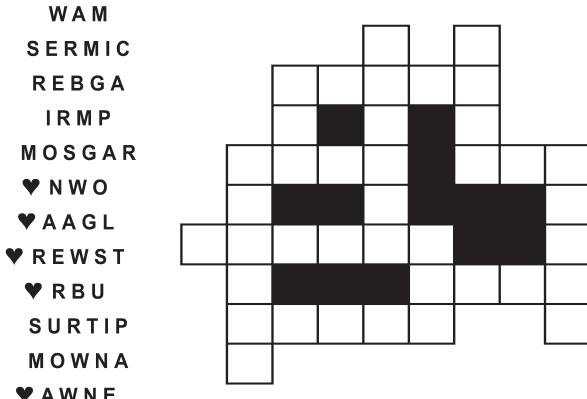
- 50 Facility
 - 51 Crafty
 - 52 Info on a notarized document
 - 53 Oodle?
- DOWN**
- 1 Cranberry territory
 - 2 "7 Faces of Dr. —"
 - 3 Discoverer's cry
 - 4 Bat
 - 5 Vast areas
 - 6 Way out
 - 7 Encountered
 - 8 "Moby-Dick" narrator
 - 9 Popular country singer
 - 10 Coagulate
 - 11 Walking stick
 - 16 Bear hair
 - 20 Performance
 - 21 Burden
 - 22 Give a darn
 - 23 Backwoods dweller
 - 24 "Zounds!"
 - 26 Hit the horn
 - 27 Yoko of music
 - 28 Great Lake
 - 29 Agents, for short
 - 31 Hitched a ride
 - 34 To and —
 - 35 Pasta toppings
 - 37 Has permission
 - 38 Sacred Egyptian bird
 - 39 Farmer's home?
 - 40 Rorschach picture
 - 41 Differently
 - 44 401(K) alternative
 - 45 Fond du —, Wis.
 - 46 G8 member
 - 47 Foundation

© 2014 King Features Synd., Inc.

FEAR & KNOT

By: rj johnson

CONQUER THE WHIRLED



Unscramble these twelve letter strings to form each into an ordinary word (ex. HAGNEC becomes CHANGE). Prepare to use only ONE word from any marked (♥) letter string as each unscrambles into more than one word (ex. ♥RATHE becomes HATER or EARTH or HEART). Fit each string's word either across or down to knot all twelve strings together.

Puzzles4Kids

by Helene Hovanec

RIDDLE SEARCH - AIRPORTS

Look up, down, and diagonally, both forward and backward to find every word on the list. Circle each one as you find it. When all the words are circled, take the UNUSED letters and write them on the blanks below. Go from left to right and top to bottom to find the answer to this riddle: **What is the first thing an elephant does at the airport?**

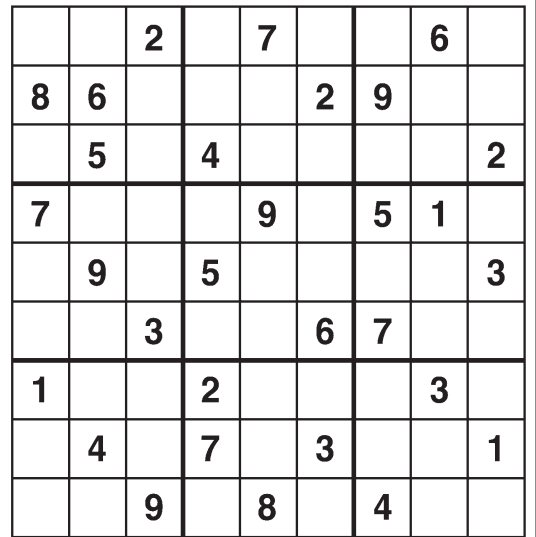


Riddle answer: _____

For more puzzle fun, go to www.brainzles.com

Weekly SUDOKU

by Linda Thistle



Place a number in the empty boxes in such a way that each row across, each column down and each small 9-box square contains all of the numbers from one to nine.

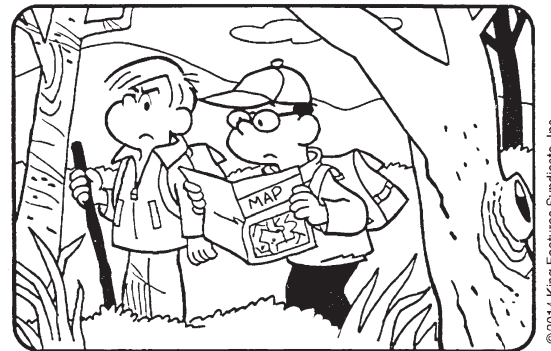
DIFFICULTY THIS WEEK: ★★

★ Moderate ★★ Challenging
★★★ HOO BOY!

© 2014 King Features Synd., Inc.

HOCUS-FOCUS

BY HENRY BOLTINOFF



CAN YOU TRUST YOUR EYES? There are at least six differences in drawing details between top and bottom panels. How quickly can you find them? Check answers with those below.

Differences: 1. Stick is shorter; 2. Jacket is opened; 3. Sincap is missing; 4. Cap is different; 5. Flashlight is missing; 6. Squirtle is missing.

Just Like Cats & Dogs

by Dave T. Phipps



MAGIC MAZE

SWITCHING FIRST AND LAST LETTER MAKES A NEW WORD

Y F B X U Q M J F B Y U R O K
H D A X U Q N K H E B Y V S P
M J H E B Y V L T Q O L I G D
B Y W T R P R A L M K I F S D
B Y W U D S D E A R Q O M E K
S I D F D O H D V B Z X W L U
S E Q E O C (RESIGNED) O
N L L M T J H P F D E C A N Y
T N U A W S P M U L S C V I T
S Q S E M P U A S C I P E W N
L K I T H F F R U S E C B D Z

Find the listed words in the diagram. They run in all directions forward, backward, up, down and diagonally.

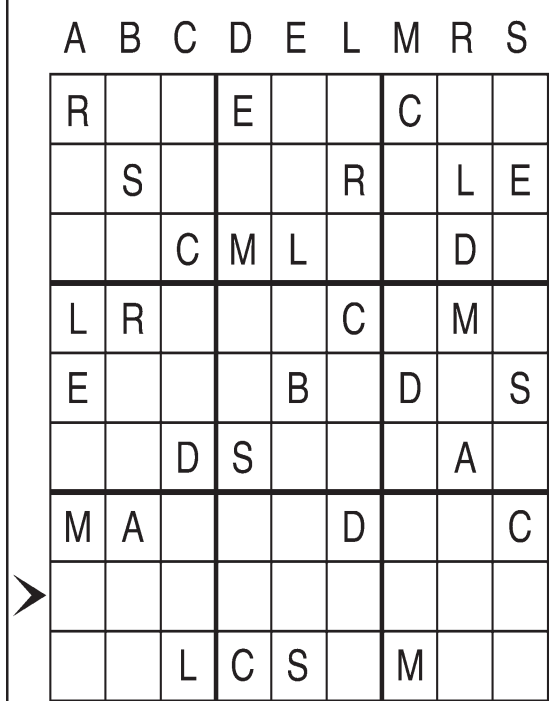
- | | | | |
|----------|-------|----------|-------|
| Aunt | Epics | Ramped | Slump |
| Deal | Males | Resigned | Surf |
| Deceiver | Mood | Rusted | Team |
| Dwindles | Prod | Satchel | |

© 2014 King Features Synd., Inc. All rights reserved

Letter Box

by Linda Thistle

Place a letter in the empty boxes in such a way that each row across, each column down and each small 9-box square contains all of the letters listed above the diagram. When completed, the row indicated will spell out a word or words.



Even Exchange

by Donna Pettman

Each numbered row contains two clues and two 6-letter answers. The two answers differ from each other by only one letter, which has already been inserted. For example, if you exchange the A from MASTER for an I, you get MISTER. Do not change the order of the letters.

- | | | | |
|---------------------|---------------|--------------------|---------------|
| 1. Hang around | ___ I ___ | Extended | ___ O ___ |
| 2. Pirate ship slat | ___ ___ K ___ | Factory | ___ ___ T ___ |
| 3. Ordinary | ___ ___ L ___ | Mailier or Lear | ___ ___ N ___ |
| 4. Burr or Carter | A ___ ___ | Nobleman | B ___ ___ |
| 5. Food server | ___ I ___ | Mr. Mitty | ___ L ___ |
| 6. Root for | C ___ ___ | Transparent | S ___ ___ |
| 7. Choir member | ___ G ___ | Transgressor | ___ N ___ |
| 8. Large ocean fish | ___ L ___ | Page border | ___ G ___ |
| 9. Battle | F ___ ___ | Evening | N ___ ___ |
| 10. Enumerate | ___ N ___ | Tennis game locale | ___ R ___ |

© 2014 King Features Synd., Inc.

Salome's Stars

ARIES (March 21 to April 19) You might be tempted to be more assertive when dealing with a job-related matter. But a carefully measured approach works best at getting the cooperation you're looking for.

TAURUS (April 20 to May 20) While others urge you to act now, you instinctively recognize that a move at this time is not in your best interests. You should know when to do so by week's end.

GEMINI (May 21 to June 20) A busy schedule keeps you on the move for much of the week. But things ease up by the time the weekend arrives, allowing you to reconnect with family and friends.

CANCER (June 21 to July 22) Travel dominates the week, and despite some delays in getting to where you want to go, the overall experience should prove to be a positive one in many ways.

LEO (July 23 to August 22) Your Leonine self-confidence comes roaring back after a brief period of doubt and helps you get through a week of demanding challenges and ultimately emerge triumphant.

VIRGO (August 23 to September 22) Virgos who have made a major commitment - personal or professional - should be able to tap into a renewed reservoir of self-confidence to help them follow through.

LIBRA (September 23 to October 22) You soon could receive news from a surprising source that could cause you to change your mind about how you had planned to deal with an ongoing job-related problem.

SCORPIO (October 23 to November 21) A surprise move of support from a colleague who has never been part of your circle of admirers helps influence others to take a new look at what you've put on the table.

SAGITTARIUS (November 22 to December 21) While a bold decision to take an "I know what I'm doing" approach impresses some colleagues, it also raises the risk of causing resentment among others.

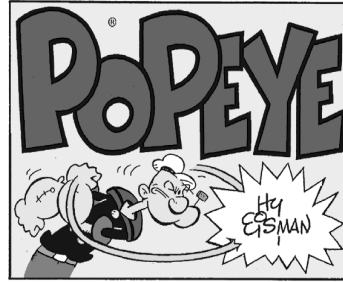
CAPRICORN (December 22 to January 19) A misunderstanding 'twixt you and a friend might not be your fault at all, despite what he or she suggests. Talk it out to see at what point the confusion might have started.

AQUARIUS (January 20 to February 18) Getting into a community operation fulfills the Aquarian's need to help people. It also can lead to new contacts that might one day help you with a project.

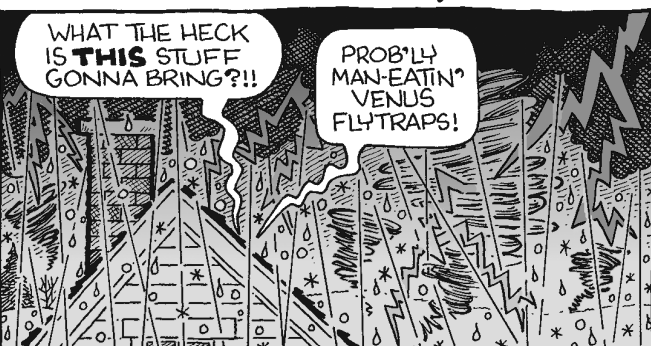
PISCES (February 19 to March 20) A minor problem could delay the start of a long-anticipated trip for two. Use the time to recheck your travel plans. You might find a better way to get where you're going.

BORN THIS WEEK: You are a dedicated romantic who seeks both excitement and stability in your relationships.

© 2014 King Features Synd., Inc.

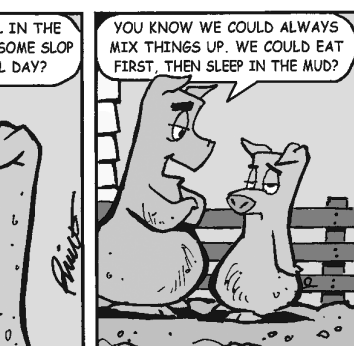


R.F.D. by Mike Marland



Amber Waves

by Dave T. Phipps



The Spats

by Jeff Pickering



© 2014 King Features Syndicate, Inc.