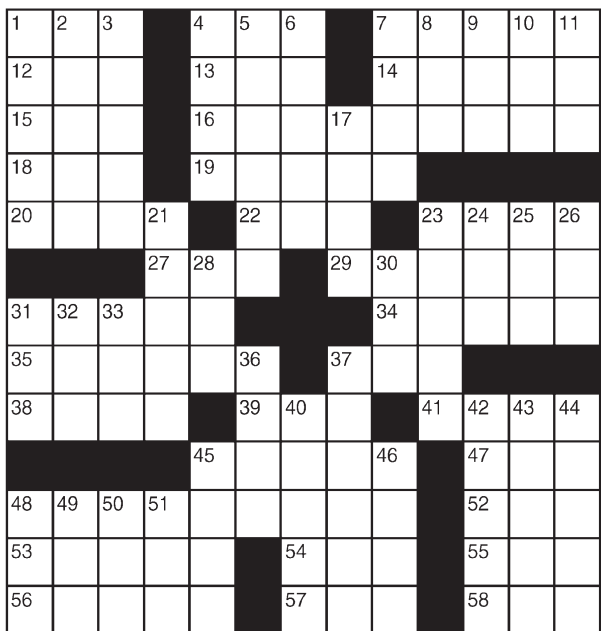


King Crossword

ACROSS

- 1 Boar's mate
- 4 Deteriorate
- 7 Blender setting
- 12 N.A. section
- 13 GI's mail address
- 14 Game venue
- 15 Transgression
- 16 Precursor
- 18 Coop dweller
- 19 Calamari
- 20 Mideast nation
- 22 Sailors' org.
- 23 Existed
- 27 Handle
- 29 Alluring quality (Var.)
- 31 Nome dome home
- 34 Duck
- 35 Escargots
- 37 Strike
- 38 Hybrid pooch
- 39 - Baba
- 41 Region
- 45 Production number?
- 47 Japanese pond carp
- 48 Snack for Wimpy
- 52 Tractor-trailer
- 53 Pong creator
- 54 "Rocks"
- 55 Tray contents?



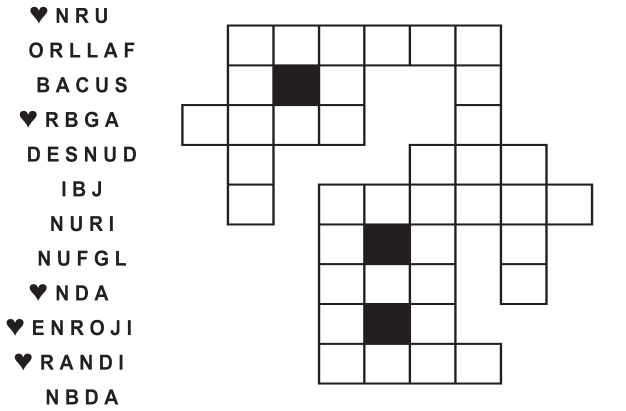
- 56 Knapsack part
 - 57 Dance syllable?
 - 58 Prepared
- DOWN**
- 1 Futomaki e.g.
 - 2 Wickerwork willow
 - 3 Would like to, colloquially
 - 4 Bleacherites' calls
 - 5 Not transparent
 - 6 Doughnut shape
 - 7 Picked up the tab
 - 8 Grecian
 - 9 Rule, for short
 - 10 Away from WSW
 - 11 Corn spike
 - 17 Bob's longtime pal
 - 21 Ring used in a throwing game
 - 23 Matilda's dance
 - 24 Flightless bird
 - 25 Scepter
 - 26 Before
 - 28 Scale member
 - 30 Wahine's accessory
 - 31 Doctrine
 - 32 Wildebeest vessel
 - 33 Long. crosser
 - 36 Dino's tail?
 - 37 Full of modern gadgetry
 - 40 Reason
 - 42 Gumbo ingredients
 - 43 Din
 - 44 Two-by-four?
 - 45 Witticism
 - 46 Vicinity
 - 48 Owns
 - 49 Lawyer (Abbr.)
 - 50 Scratch
 - 51 Underwear with under wire

© 2014 King Features Synd., Inc.

FEAR KNOT

By: rj johnson

CONQUER THE WHIRLED



Unscramble these twelve letter strings to form each into an ordinary word (ex. HAGNEC becomes CHANGE). Prepare to use only ONE word from any marked (♥) letter string as each unscrambles into more than one word (ex. ♥RATHE becomes HATER or EARTH or HEART). Fit each string's word either across or down to knot all twelve strings together.

Puzzles4Kids

by Helene Hovanec

CODED RIDDLE

Change each letter to the one that comes immediately BEFORE it in the alphabet to find a riddle and its answer.

Here's a copy of the alphabet to guide you:

ABCDEFGHIJKLMNOPQRSTUVWXYZ

XIBU HPFT VOEFS ZPVS GFFU

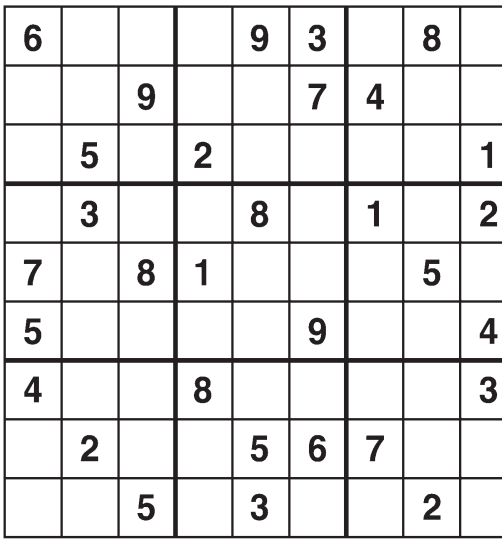
BOE PWFS ZPVS IFBE?

B KVNQ SPQF.

For more puzzle fun, go to www.brainzles.com

Weekly SUDOKU

by Linda Thistle



Place a number in the empty boxes in such a way that each row across, each column down and each small 9-box square contains all of the numbers from one to nine.

DIFFICULTY THIS WEEK: ★★

★ Moderate ★★ Challenging
★★★ HOO BOY!

© 2014 King Features Synd., Inc.

Just Like Cats & Dogs

by Dave T. Phipps



MAGIC MAZE

HELD THE WORLD RECORD IN WOMEN'S LONG JUMP

U F C Z W U R P M J H E C Z X
L H A D N E S O R A U S Q N L
Z T L U H C S E J V G E C Z X
V U T R R P L M N O L J H E C
A Y C H I S T Y A K O V A W V
T L R S H M P N L I K I G E C
B Z G C E X S W U L L S R P O
M D E E L N N U G Z C L A U S
J R N I I G O E C J T G I O V
D D B A K S N I S E Z R K W A
Y E E S R E K X I M O T I H W

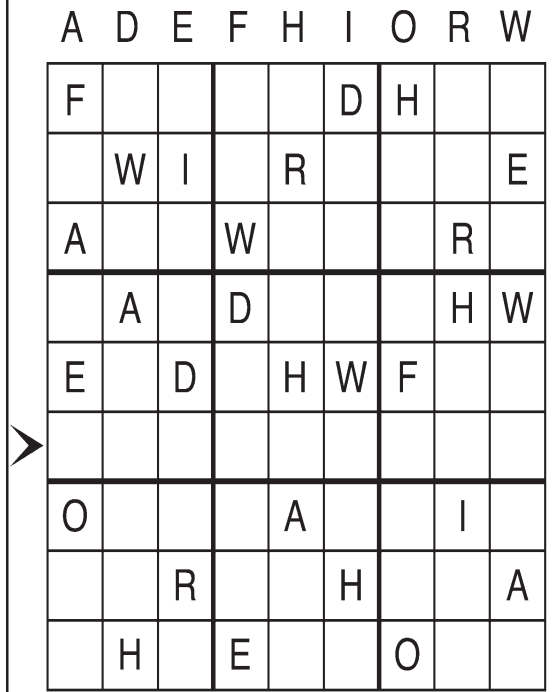
Find the listed words in the diagram. They run in all directions forward, backward, up, down and diagonally.

Chistyakova	Gunn	Mejzlikova	Siegl
Claus	Hitomi	Rand	Voigt
Cusmir	Ionescu	Rosendahl	Williams
Drechsler	Krzysińska	Schultz	

Letter Box

by Linda Thistle

Place a letter in the empty boxes in such a way that each row across, each column down and each small 9-box square contains all of the letters listed above the diagram. When completed, the row indicated will spell out a word or words.



Even Exchange

by Donna Pettman

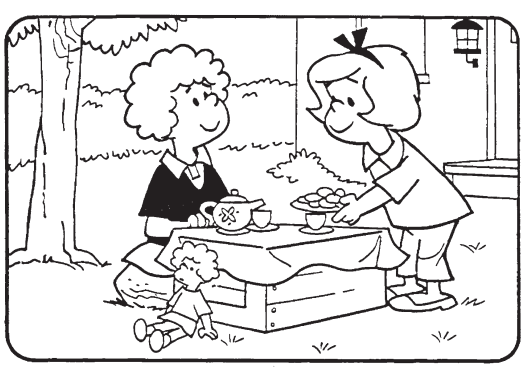
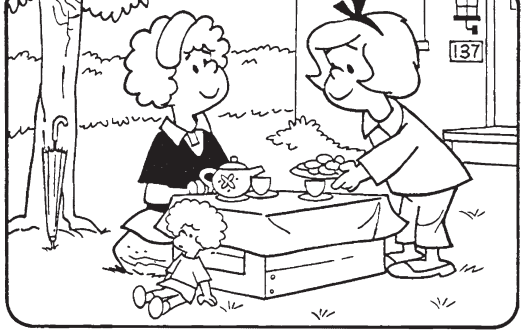
Each numbered row contains two clues and two 6-letter answers. The two answers differ from each other by only one letter, which has already been inserted. For example, if you exchange the A from MASTER for an I, you get MISTER. Do not change the order of the letters.

- | | | | |
|---------------------|-----------|---------------------|-----------|
| 1. ___ the leader | ___ O ___ | Chap | ___ E ___ |
| 2. Night sky hunter | ___ R ___ | Pungent bulb | ___ N ___ |
| 3. Mason's block | ___ C ___ | Invigorating | ___ S ___ |
| 4. Thick | D ___ | Nervous | T ___ |
| 5. Friendly ghost | ___ S ___ | Tent dweller | ___ M ___ |
| 6. Mariner | S ___ | Clothes maker | T ___ |
| 7. Candle glow | ___ L ___ | Portrait border | ___ R ___ |
| 8. Compassion | ___ C ___ | Jolly | ___ R ___ |
| 9. Electrical jolt | ___ H ___ | "Star Trek" officer | ___ P ___ |
| 10. Soho locale | ___ O ___ | President Johnson | ___ Y ___ |

© 2014 King Features Synd., Inc.

HOCUS-FOCUS

BY HENRY BOLTINOFF



CAN YOU TRUST YOUR EYES? There are at least six differences in drawing details between top and bottom panels. How quickly can you find them? Check answers with those below.

Differences: 1. Parasol is missing. 2. Headband is missing. 3. Doll's hair is different. 4. Tablecloth is different. 5. Sleeve is shorter. 6. Number is missing.

Salome's Stars

ARIES (March 21 to April 19) An unexpected development could change the Arian's perspective on a potential investment. Keep an open mind. Ignore the double talk and act only on the facts.

TAURUS (April 20 to May 20) A surge of support helps you keep your long-standing commitment to colleagues who rely on you for guidance. Ignore any attempts to get you to ease up on your efforts.

GEMINI (May 21 to June 20) Family continues to be the dominant factor, but career matters also take on new importance. You might even be able to combine elements of the two in some surprising, productive way.

CANCER (June 21 to July 22) A realistic view of a workplace or personal situation helps you deal with it more constructively once you know where the truth lies. Reserve the weekend for someone special.

LEO (July 23 to August 22) As much as you Leos or Leonas might be intrigued by the "sunny" prospects touted for a potential investment, be careful that you don't allow the glare to blind you to its essential details.

VIRGO (August 23 to September 22) A friend's problem brings out the Virgo's nurturing nature in full force. However, don't go it alone. Allow others to pitch in and help share the responsibilities you've assumed.

LIBRA (September 23 to October 22) A business decision might need to be put off until a colleague's personal matter is resolved. Use this time to work on another business matter that you've been anxious to get to.

SCORPIO (October 23 to November 21) Relationships (personal or professional) might appear to be stalled because of details that keep cropping up and that need tending to. Be patient. A path begins to clear soon.

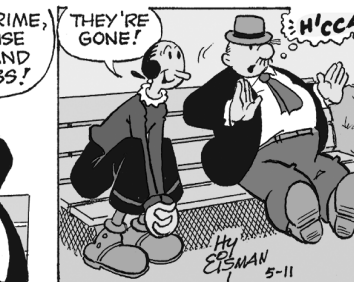
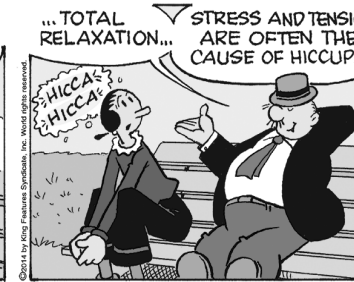
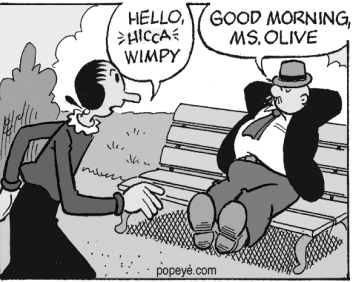
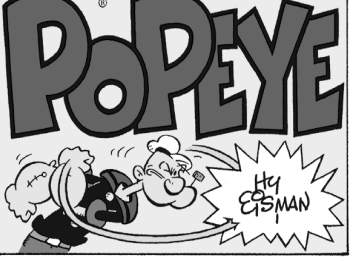
SAGITTARIUS (November 22 to December 21) A promotion could cause resentment among envious colleagues. But others recognize how hard you worked to earn it, and will be there to support you if you need them.

CAPRICORN (December 22 to January 19) Handling a delicate personal matter needs both your wisdom and your warmth. Expect some setbacks, but stay with it. The outcome will more than justify your efforts.

AQUARIUS (January 20 to February 18) Resist the temptation to cut corners just because time is short. Best to move ahead step by step so you don't overlook anything that might later create time-wasting complications.

PISCES (February 19 to March 20) Use the good will you recently earned with that well-received project to pitch your ideas for a new project. Expect some tough competition, though, from an unlikely source.

BORN THIS WEEK: Your love of family extends beyond your personal life to include others to whom you generously extend your care and affection.



R.F.D.

by Mike Marland



Amber Waves

by Dave T. Phipps



The Spats

by Jeff Pickering

