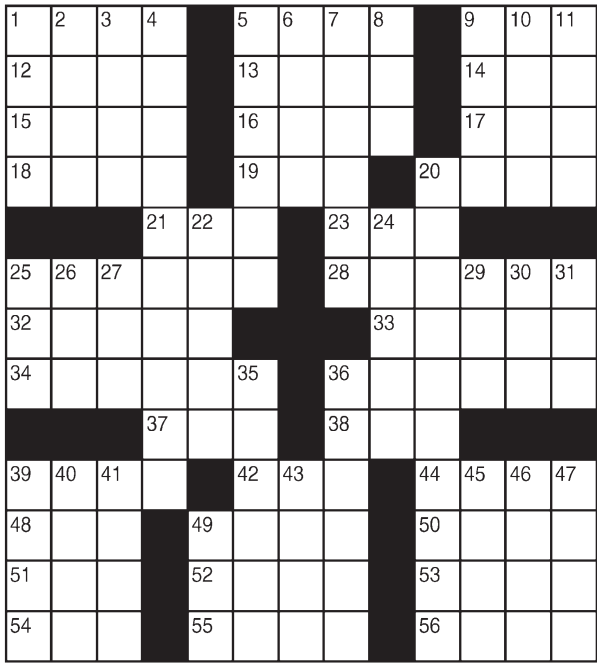


King Crossword

ACROSS

- 1 Trip to Mecca
- 5 Inauguration recitation
- 9 Vacillate
- 12 Birthright barterer
- 13 100 percent
- 14 Have a bug
- 15 Flowerless plant
- 16 Blueprint
- 17 Altar affirmative
- 18 London gallery
- 19 Peculiar
- 20 Leftovers recipe
- 21 IV measures
- 23 Ram's fan?
- 25 Esprit de corps
- 28 Automaker's nightmare
- 32 Accustom
- 33 Recipient
- 34 GI ID
- 36 Set off
- 37 Baseball stat.
- 38 Homer's neighbor
- 39 Source of Samson's strength
- 42 Scepter
- 44 Thin streak of smoke



- 48 Vacating
- 49 Michigan, e.g.
- 50 Between jobs
- 51 LummoX
- 52 Shrek is one
- 53 Spruced up
- 54 Saute
- 55 Abacus
- 56 Spread-sheet fill
- DOWN**
- 1 Weight
- 2 Cruising
- 3 Pub missile
- 4 Mrs. Johnny Cash
- 5 Go against
- 6 "— Lang Syne"
- 7 Merchant
- 8 Coop dweller
- 9 Bide one's time
- 10 Staffer
- 11 Candlelight, e.g.
- 20 Renewed energy
- 22 Transparent
- 24 Shoe style
- 25 Central
- 26 Yoko of music
- 27 Bad hairpiece
- 29 Blackbird
- 30 Allow
- 31 Sheltered side
- 35 Parking space?
- 36 "Absolutely!"
- 39 Horse's foot
- 40 Somewhere out there
- 41 Uncertain
- 43 Gumbo item
- 45 Concept
- 46 Venetian blind part
- 47 Animal-rights org.
- 49 High-arc shot

© 2014 King Features Synd., Inc.

FEAR KNOT

By: rj johnson

CONQUER THE WHIRLED

PIM
ACAFER
YARMO
SPAEL
PAMIOT
LYF
PURM
PREDO
RMA
RAPDET
FLICA
PYAL

Unscramble these twelve letter strings to form each into an ordinary word (ex. HAGNEC becomes CHANGE). Prepare to use only ONE word from any marked (♥) letter string as each unscrambles into more than one word (ex. ♥RATHE becomes HATER or EARTH or HEART). Fit each string's word either across or down to knot all twelve strings together.

NEW! 30 Fear Knot puzzles \$3.50 • Six Volumes • Order at rbmamall.com

Puzzles4Kids

by Helene Hovanec

WORD FUN

Study the two words on each line to find the ONE letter in the left column that is NOT in the word in the right column. Write the extra letter on the blank space. Then read DOWN to answer this riddle:

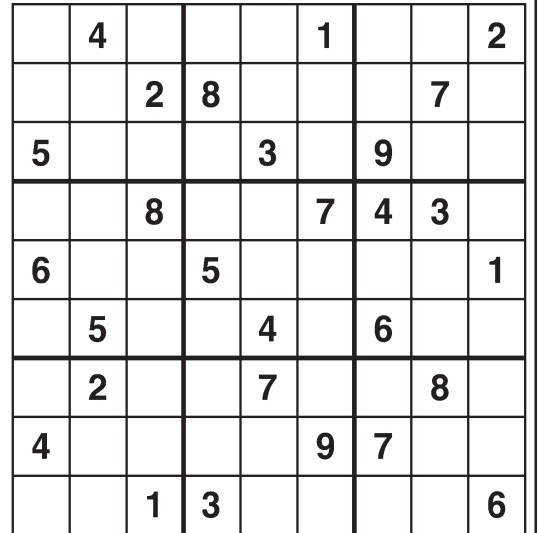
WHAT DO YOU CALL A WITCH'S GARAGE?

- | | | | | | |
|--------|---|-------|--------|---|-------|
| SANDAL | — | LANDS | SCARCE | — | RACES |
| BERLIN | — | LINER | LOWERS | — | SWORE |
| PHRASE | — | HEAPS | DEACON | — | DANCE |
| VIDEOS | — | DIVES | SPEECH | — | CHEEP |
| TROOPS | — | PORTS | RESENT | — | STERN |
| EMBARK | — | BREAK | DARTED | — | DREAD |

For more puzzle fun, go to www.brainzles.com

Weekly SUDOKU

by Linda Thistle



Place a number in the empty boxes in such a way that each row across, each column down and each small 9-box square contains all of the numbers from one to nine.

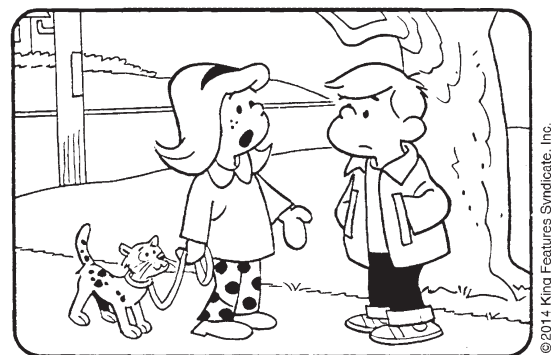
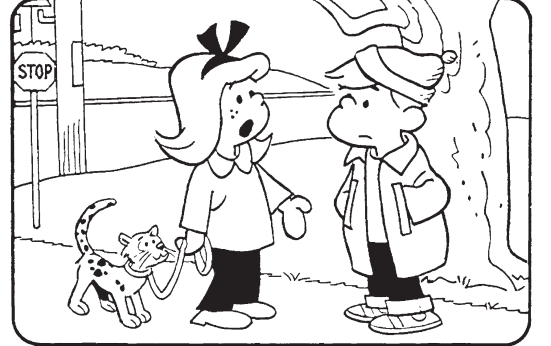
DIFFICULTY THIS WEEK: ★★

★ Moderate ★★ Challenging
 ★★★ HOO BOY!

© 2014 King Features Synd., Inc.

HOCUS-FOCUS

BY HENRY BOLTIHOFF



CAN YOU TRUST YOUR EYES? There are at least six differences in drawing details between top and bottom panels. How quickly can you find them? Check answers with those below.
 REFERENCES: 1. Sign is missing; 2. Tail is shorter; 3. Sticks are different; 4. Bow is missing; 5. Hat is missing; 6. Coat is shorter.

Just Like Cats & Dogs

by Dave T. Phipps

TO BE HONEST I LOST TRACK OF WHAT ALL I PUT ON THIS BUT HEY... IT BEGINS AND ENDS WITH BREAD!

MAGIC MAZE • FLAG —

O C Y V R O L H E B X U R O L
 E I E B Y V S Q N K H E B Y W
 T C R L O S L N L J G E B Y W
 U R U P L T I A G N K I G D B
 Z X V R Y A D P N S Q O G M K
 I G E C T F B O I G A N Y W U
 S Q P P N F L T W E I J H F E
 C A A I Y X O S O N L S V U S
 Q C P H W A V E R O A O N M K
 J H F S E C B U H T F M P Z Y
 X R E R A E B V T S U T R Q P

Find the listed words in the diagram. They run in all directions forward, backward, up, down and diagonally.

- | | | | |
|---------|----------|--------|----------|
| Burning | Football | Ship | Stop |
| Captain | Man | Signal | Throwing |
| Day | Of truce | Staff | Waver |
| Down | Pole | Stone | |

© 2014 King Features Synd., Inc. All rights reserved.

Letter Box

by Linda Thistle

Place a letter in the empty boxes in such a way that each row across, each column down and each small 9-box square contains all of the letters listed above the diagram. When completed, the row indicated will spell out a word or words.

D E I L M O R S T

→									
	S	I	R	D	M				
	E		O	D	L				
		O		E		L			
	D		L		R				
	M		T		I				
	D		L		E				
	T		R			D			
	R	E		S	O				

Even Exchange

by Donna Pettman

Each numbered row contains two clues and two 6-letter answers. The two answers differ from each other by only one letter, which has already been inserted. For example, if you exchange the A from MASTER for an I, you get MISTER. Do not change the order of the letters.

- | | | | |
|-----------------------|---------------|-------------------------|---------------|
| 1. Harsh gleam | — — — — R — — | Clearing in the woods | — — — — D — — |
| 2. More recent | — — — — A — — | Batch of kittens | — — — — I — — |
| 3. Overflow the banks | — — — — D — — | Carpet location | — — — — D — — |
| 4. Clothes bin | — — — — P — — | Nail pounder | — — — — M — — |
| 5. Dog lead | — — — — H — — | Rent | — — — — E — — |
| 6. Charred | — — — — N — — | Explode, like a balloon | — — — — S — — |
| 7. Mom or Dad | — — — — R — — | Copyright | — — — — T — — |
| 8. Graph | — — — — R — — | Mantra | — — — — N — — |
| 9. Letterman or Niven | — — — — D — — | Bette or Miles | — — — — S — — |
| 10. Pantry | — — — — R — — | Firefighter's equipment | — — — — D — — |

© 2014 King Features Synd., Inc.

Salome's Stars

ARIES (March 21 to April 19) An upcoming trip could create some problems with your schedule unless you tie up as many loose ends as possible before you head out the door. Ask a friend or colleague to help you.

TAURUS (April 20 to May 20) Being eager to start a new project is fine. However, moving ahead without knowing what actually will be expected of you could cause a problem down the line. Ask some questions.

GEMINI (May 21 to June 20) Getting through some recent challenges in good shape might give you a false sense of security. Don't relax your guard. You need to be prepared for what else could happen.

CANCER (June 21 to July 22) Caution is still advised, even though you think you're as prepared as you need to be. Keep in mind that change is in your aspect, and you should expect the unexpected.

LEO (July 23 to August 22) The Lion's gift of persuasion helps you get your points across, even to some of your most negative naysayers. An old friend might seek you out for some advice.

VIRGO (August 23 to September 22) Being sure of your convictions is fine. But leave some room for dissenting opinions. You might learn something that could help you avoid a possible problem later on.

LIBRA (September 23 to October 22) Getting good legal advice on what your rights actually are is the first step toward resolving that pesky problem so that it doesn't re-emerge at a later date. Good luck.

SCORPIO (October 23 to November 21) Longtime relationships work well this week, whether they're personal or professional. It's also a good time to invite new friends and colleagues into your life.

SAGITTARIUS (November 22 to December 21) This is a good week to do the research that will help you uncover those irrefutable facts that can back you up on your new venture when you most need it.

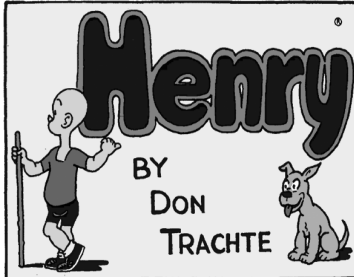
CAPRICORN (December 22 to January 19) Change is an important factor in your aspect this week and could affect something you might have thought was immune to any sort of adjustment or "alteration."

AQUARIUS (January 20 to February 18) Being asked to share someone's deeply personal confidence might be flattering, but accepting could be unwise. Decline gracefully but firmly.

PISCES (February 19 to March 20) As wise as you are, you could still be misled by someone who seems to be sincere but might not be. Take more time to assess the situation before making any commitments.

BORN THIS WEEK: You like to face challenges that others might try to avoid, and by so doing, you set an example of courage for all.

© 2014 King Features Syndicate Inc.



R.F.D.



Amber Waves

SHERIFF LONESTAR IS HERE TO KEEP THE PEACE.



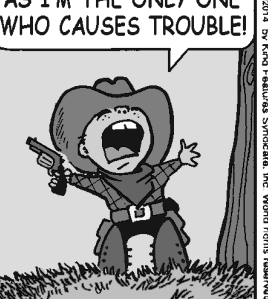
THERE WILL BE NO LEAVING A BIG MESS OR TRACKING MUD...



MAKING LOUD NOISES, TEASING OR TROUBLE OF ANY KIND.



I'M SO CONFLICTED AS I'M THE ONLY ONE WHO CAUSES TROUBLE!



The Spats



by Jeff Pickering

© 2014 King Features Syndicate, Inc. All rights reserved.