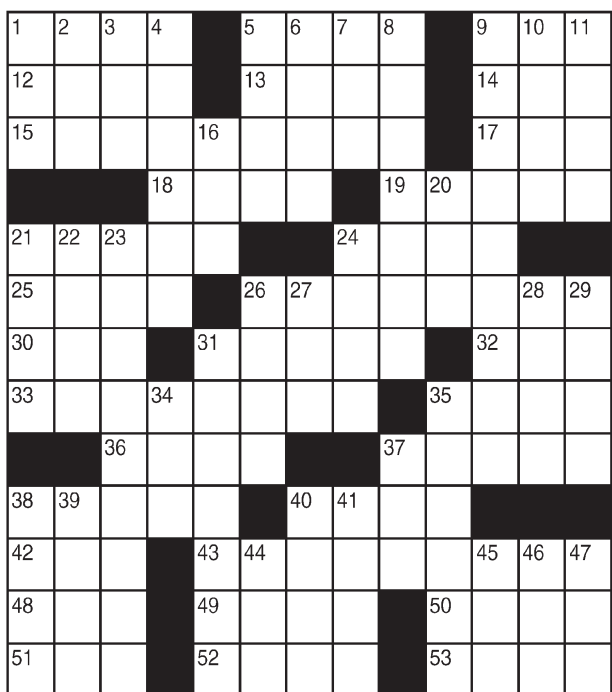


King Crossword

ACROSS

- 1 Pleasant
- 5 Arrest, slangily
- 9 Long, crosser
- 12 Press
- 13 Colorful fish
- 14 Id counterpart
- 15 Huge victory
- 17 Eccentric
- 18 Like — of bricks
- 19 Wild West show
- 21 Inane
- 24 Antitoxins
- 25 Seed covering
- 26 Country-wide
- 30 Cooler
- 31 Heathen
- 32 Before
- 33 Try
- 35 Long story
- 36 Farm fraction
- 37 Cook-wear?
- 38 Cultural character
- 40 Verdi opera
- 42 CNN alumnus
- 43 British capitalists?
- 48 Sun Yat- —

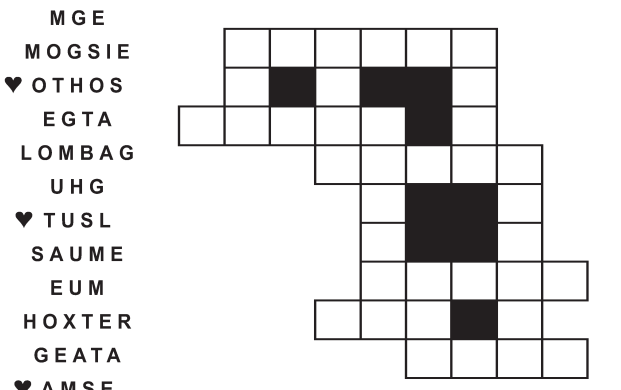


- 49 Sea eagle
- 50 Final blow
- 51 Superlative suffix
- 52 Favorable votes
- 53 Beefy entree
- 9 Listen
- 10 Chills and fever
- 11 Dorothy's dog
- 16 Pigpen
- 20 Acapulco gold
- 21 Secure
- 22 Persia, now
- 23 "The Year of Living Dangerously"
- 24 Celebrity
- 26 Church area
- 27 Past
- 28 Jason's ship
- 29 Slender
- 31 Garnishing sprig
- 34 Environmentally friendly
- 35 Paddles
- 37 Fuss
- 38 Otherwise
- 39 "Piggies"
- 40 "— Karenina"
- 41 Mid-month date
- 44 Raw rock
- 45 Chow down
- 46 Deli loaf
- 47 Boar's mate

© 2014 King Features Synd., Inc.

FEAR KNOT

By: rj johnson
CONQUER THE WHIRLED

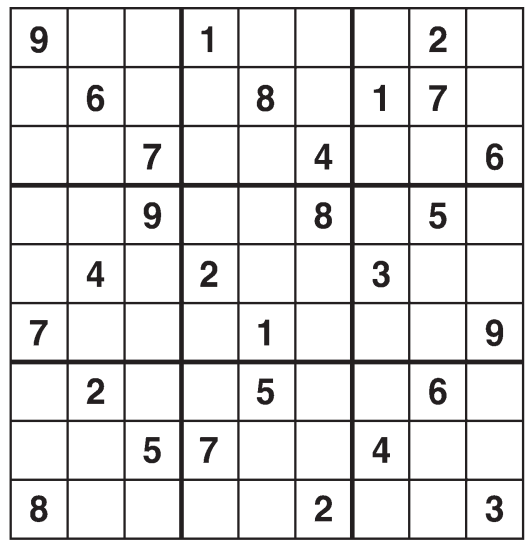


Unscramble these twelve letter strings to form each into an ordinary word (ex. HAGNEC becomes CHANGE). Prepare to use only ONE word from any marked (♥) letter string as each unscrambles into more than one word (ex. ♥RATHE becomes HATER or EARTH or HEART). Fit each string's word either across or down to knot all twelve strings together.

NEW! 30 Fear Knot puzzles \$3.50 • Six Volumes • Order at rbmall.com

Weekly SUDOKU

by Linda Thistle



Place a number in the empty boxes in such a way that each row across, each column down and each small 9-box square contains all of the numbers from one to nine.

DIFFICULTY THIS WEEK: ★★

★ Moderate ★★ Challenging
★★★ HOO BOY!

© 2014 King Features Synd., Inc.

Puzzles4Kids

by Helene Hovanec

RIDDLE SEARCH - EUROPE
Look up, down, and diagonally, both forward and backward to find every word on the list. Circle each one as you find it. When all the words are circled, take the UNUSED letters and write them on the blanks below. Go from left to right and top to bottom to find the answer to this riddle: **Why is a map of Europe like a frying pan?**



Riddle answer: _____

For more puzzle fun, go to www.brainzles.com

Just Like Cats & Dogs

by Dave T. Phipps



MAGIC MAZE

BEGIN AND END WITH "D"



Find the listed words in the diagram. They run in all directions forward, backward, up, down and diagonally.

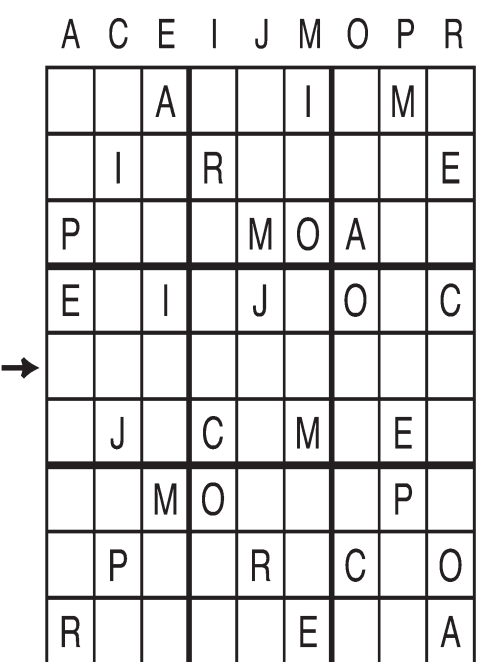
- | | | | |
|-----------|---------|----------|-------|
| Dachshund | Demand | Dividend | Dread |
| David | Diamond | Dogwood | Druid |
| Dead | Did | Dotted | Dud |
| Deckhand | Diehard | Download | |

© 2014 King Features Synd., Inc. All rights reserved

Letter Box

by Linda Thistle

Place a letter in the empty boxes in such a way that each row across, each column down and each small 9-box square contains all of the letters listed above the diagram. When completed, the row indicated will spell out a word or words.



Even Exchange

by Donna Pettman

Each numbered row contains two clues and two 6-letter answers. The two answers differ from each other by only one letter, which has already been inserted. For example, if you exchange the A from MASTER for an I, you get MISTER. Do not change the order of the letters.

- | | | | |
|-----------------------------|-------------|------------------------|-------------|
| 1. Bird sanctuary | A _ _ _ _ _ | Spooky | E _ _ _ _ _ |
| 2. Lee of <i>Cat Ballou</i> | _ _ _ _ V _ | Sheen or Van Buren | _ _ _ _ T _ |
| 3. Southpaw | _ E _ _ _ _ | Haughty | _ O _ _ _ _ |
| 4. Domesticates | T _ _ _ _ _ | Taylor, Bond or Arness | J _ _ _ _ _ |
| 5. Superior | _ E _ _ _ _ | Peculiarly acrid | _ I _ _ _ _ |
| 6. Frontrunner | _ _ A _ _ _ | Banker | _ _ N _ _ _ |
| 7. Mending square | _ A _ _ _ _ | Throw the baseball | _ I _ _ _ _ |
| 8. Fraidy-cat | C _ _ _ _ _ | Cosell or Stern | H _ _ _ _ _ |
| 9. Olympian's award | _ _ D _ _ _ | Gold or silver | _ _ T _ _ _ |
| 10. A first appearance | _ _ _ _ U _ | Bank withdrawal | _ _ _ _ I _ |

© 2014 King Features Synd., Inc.

Salome's Stars

ARIES (March 21 to April 19) You could be caught in a torrent of advice from well-meaning friends and colleagues this week. But remember, Lamb, you are at your best when you are your own inimitable self.

TAURUS (April 20 to May 20) Expect strong efforts to get you to accept things as they are and not question them. But ignore all that and continue your inquiries until you're sure you have all the answers you need.

GEMINI (May 21 to June 20) Heavier than usual family and workplace duties compete for your time this week. Try to strike a balance so that you're not overwhelmed by either. Pressures ease by week's end.

CANCER (June 21 to July 22) It's a good time for the Moon Child to show off your uniquely inspired approach to the culinary skills — especially if they're directed toward impressing someone special.

LEO (July 23 to August 22) You might be happy about the re-emergence of a long-deferred deal. But don't pounce on it quite yet. Time can change things. Be sure the values you looked for before are still there.

VIRGO (August 23 to September 22) Try to rein in your super-critical attitude, even if things aren't being done quite as you would prefer. Remember: What you say now could create an awkward situation later on.

LIBRA (September 23 to October 22) Although you can expect on-the-job cooperation from most of your colleagues this week, some people might insist on knowing more about your plans before they can accept them.

SCORPIO (October 23 to November 21) Creating another way to do things is commendable. But you could find some resistance this week from folks who would rather stick with the tried-and-true than try something new.

SAGITTARIUS (November 22 to December 21) You usually can keep your aim focused on your goal. But you might need to make adjustments to cope with unsteadiness factors that could arise over the course of the week.

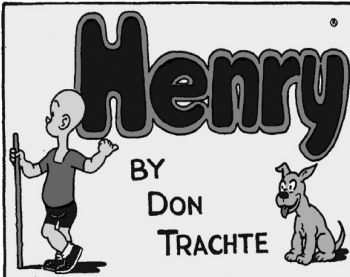
CAPRICORN (December 22 to January 19) News arrives about a projected move. Be prepared to deal with a series of possible shifts, including starting and finishing times, and how much the budget will actually cover.

AQUARIUS (January 20 to February 18) A new relationship needs time to develop. Let things flow naturally. It could be a different story with a workplace situation, which might require faster and more focused attention.

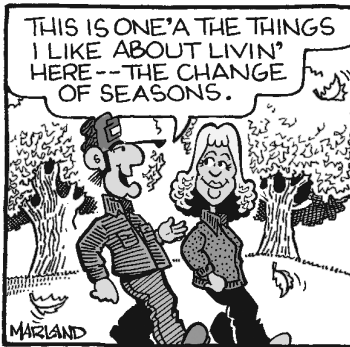
PISCES (February 19 to March 20) Accept a compliment without trying to troll for any hidden reason beyond what was said. After all, don't you deserve to be praised every now and then? Of course you do.

BORN THIS WEEK: You like to weigh all possibilities before making a decision. You would be a fine judge, or even be a star in a jury room.

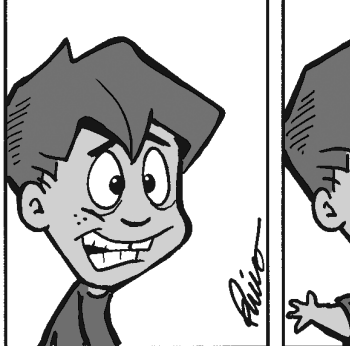
© 2014 King Features Syndicate Inc.



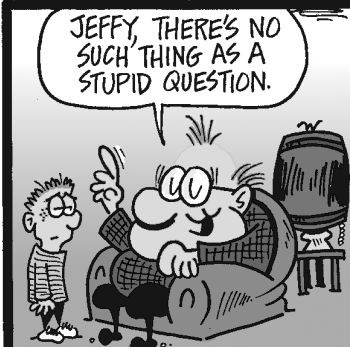
R.F.D.



Amber Waves



The Spats



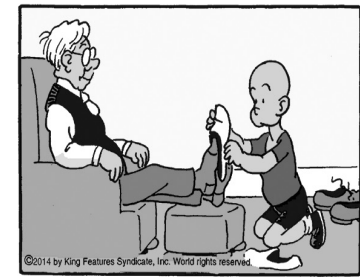
by Mike Marland



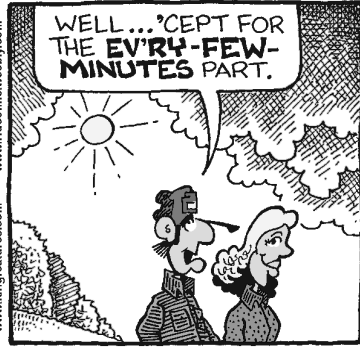
Amber Waves



by Dave T. Phipps



by Mike Marland



Amber Waves



by Jeff Pickering

