

Emily Walton Is Named State Honorable Mention

The junior is first Estill County soccer player to be recognized at the All-State level

Estill County High School Girls Soccer player, Emily Walton, was named to the All-State Honorable Mention team for the 2014 season. Walton, a junior, is the first Estill County soccer player to be recognized at the All-State level.

Walton finished the season tied for second in the state in assists with 22, setting a single-season school record. Walton also recorded a Lady Engineer single-season record 29 goals, placing her second all-time behind Class of 2014 standout Taylor Adams.

Along with receiving All-State honors, Walton was also recognized by the National Soccer Coaches Association of America and MaxPreps earlier this season, being named Kentucky Girls Soccer Player of the Week. Lady Engineers Sophomore Kennedy Horn joined Walton in winning the award, each being named to the honor twice this season.

Walton, a co-captain, helped lead the Lady Engineers to a district championship once again, as well as a third consecutive double-digit win season. In five games against

district opponents, the Lady Engineers outscored Powell County and Breathitt County 50-0. This dominance helped Estill set a school record of 93 goals in single season.

"The recognition Emily is receiving is a testament to her hard work and the improvement of Estill County soccer as a whole," said Coach Andrew Hatton. "The program has changed over the past 5 years, and it's because of the many dedicated players just like Emily."

Eight other returning starters will join

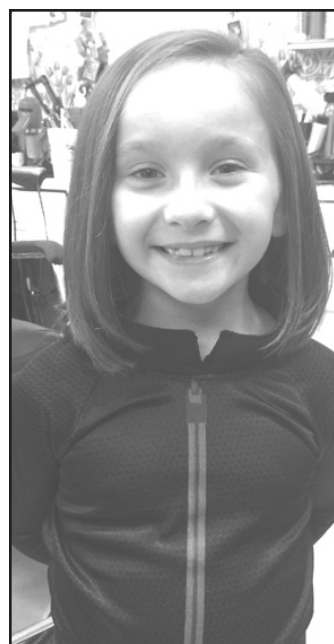
Walton for next season, looking to capture the program's first regional championship.

The Lady Engineers featured three players on the First Team All-Region this year, with sophomore Autumn Tipton and senior Courtney Plowman joining Walton. Senior Victoria Wise, juniors Summer King and Ashley Jones, and sophomores Alaina Thomas and Kennedy Horn who were named to Second Team All-Region.

Horn, King and Walton were each named to the All-Region Tournament Team.



2014 Estill Engineers Varsity, left to right, front: McKenzie Henry, Kalea Hatton, Addison Thomas, Kennedy Horn, Emily Walton, Alaina Thomas, Kayelyn Cox, Summer King, Autumn Tipton. Back: Coach Andrew Hatton, Victoria Wise, Morgan Dennis, Taylor Wiseman, Ashley Jones, Courtney Plowman, Heather Hebert, Britney Fowler, Jadyn Rose, and Coach Candie McMaine.



Jadelyn Neal had her hair cut in order to be able to donate it to "Locks of Love." At right, Kristi Crowe, beautician at Looking Fancy Hair Salon, is shown cutting Jadelyn's hair. At left, Jadelyn is seen with her new look. She is the daughter of Barry & Melissa Neal and the granddaughter of Johnny & Joyce Neal.

Ag Tag Program For FFA

Kentucky Commissioner of Agriculture James Comer has pioneered the Kentucky Farm license plate program, adding a direct benefit for Kentucky FFA and 4-H. When a person purchases a Kentucky Farm License plate, they have the opportunity to donate \$10 which is divided equally between Kentucky FFA, Kentucky 4-H and Kentucky proud.

The FFA share for this fiscal year ending June 30, 2014 was 169,280.21, a 51,206.88 increase from 2012, the first year of the program. The Kentucky FFA foundation distributes half of the funds generated from a county back to FFA chapters in that county. The half retained by the Kentucky FFA Foundation is used to support a variety of state level programs.

"When Kentucky farmers renew their license plates, they can add a voluntary \$10 donation that will be split evenly among these three fine organizations," said Commissioner Comer, a former state FFA president. "FFA and 4-H give Kentucky's young people opportunities to participate in constructive activities while they learn the value of hard work and discipline. Kentucky Proud helps Kentucky producers find new markets for their products. All three pro-

grams are vital to the future of Kentucky agriculture and Kentucky as a whole." In Estill county, 21.97% of those purchasing farm plates are also making the \$10 contribution. Kentucky FFA makes a positive difference in the lives of more than 14,500 students through premier leader-

ship, personal growth, and career success through agriculture education, including those here in Estill county. If you are renewing your farm plates this year, we encourage you to show your support for the FFA and make \$10 contribution.



Raven Kerby, Treasurer, and Whitney Ferrell, Secretary, accepted funds for the local chapter from the State's AG TAG program, which comes from those who register their KY Farm License Plates and make a voluntary \$10 donation. (Photo and story courtesy of Whitney Ferrell, Estill County FFA Secretary)

Committee Seeks Board Audit

An Estill County group that calls itself the "Watchdog Committee" is circulating a petition throughout the county seeking to have the Estill County Board of Education audited in much the same manner that the Fayette County Board of Education was audited recently.

Former Irvine mayor Leon Roberts is one of those that has sought in recent months to have the school system audited.

Newly re-elected school board member Jonathan Bicknell has also asked the

board for an audit but has not been able to get two other members to go along for a 3-2 majority.

The petition says, "We are requesting an audit of the accounts and practices of the Estill County School Board for the following reasons:"

Among reasons named include the hiring of an attorney, the employment of an architect firm, bid opening, using the same auditor, use of school vehicles, accepting gifts from the superintendent, and the refusal to answer questions

during meetings.

Also named were unscheduled meetings with two members to discuss school business, providing information about tax rates, decisions made without the knowledge of board members, and the use of profanity directed at attendees and other board members during official meetings.

The full petition is readily available throughout the county, and accusations made within them are just charges and should not be considered true until they are proven.

What moves through us is a silence,
a quiet sadness,
a longing for one more day,
one more word,
one more touch,
we may not understand
why you left this earth so soon,
or why you left before
we were ready to say goodbye,
but little by little
we begin to remember
not just that you died,
but that you lived.
And that life
gave us memories
too beautiful to forget.

The Compassionate Friends
Supporting Family After a Child Dies

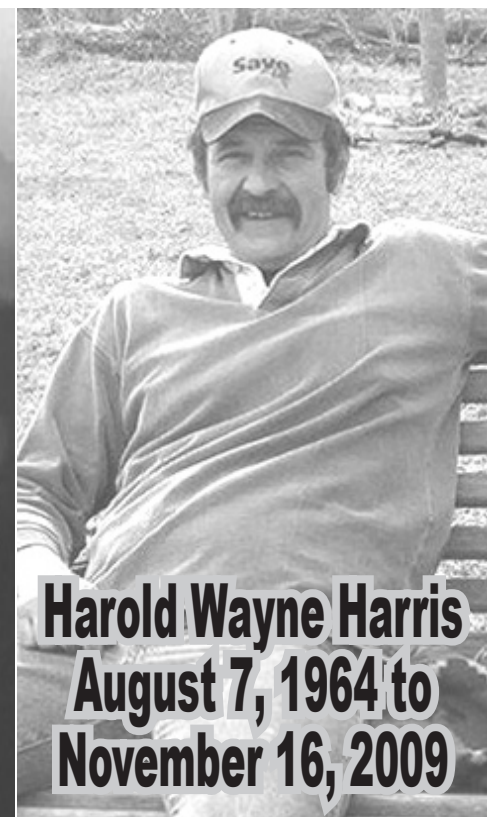
- author unknown

Miss and love you son,
Mom, Dad, and Cletta



Missing you always
and loving you forever,
Your Sis and Steve

There is a face before me,
A voice I would love to hear,
A smile I will always remember,
Of a Brother I loved so dear,
Deep in my heart lies a picture,
More precious than silver or gold,
Its a picture of my Brother,
Whose memory will never grow old.



Harold Wayne Harris
August 7, 1964 to
November 16, 2009