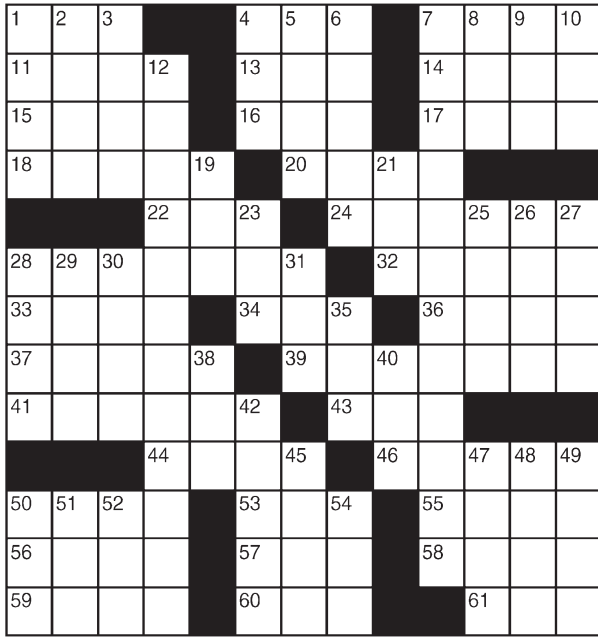


King Crossword

ACROSS

- 1 "I — Camera"
- 4 Film director Van Sant
- 7 Lather
- 11 Cabin makeup
- 13 Fire residue
- 14 Not working
- 15 Time of prosperity
- 16 Writer Buscaglia
- 17 Bridle strap
- 18 Inert gas
- 20 Nitwit
- 22 Family
- 24 Preeminent person
- 28 Diamond merchant
- 32 Skeptical sort
- 33 Line of symmetry
- 34 Child
- 36 Eat
- 37 Craze
- 39 Made a map of
- 41 Like urban air, maybe
- 43 Historic period
- 44 Verb's companion
- 46 Contest submission
- 50 Coffee, slangily



- 53 — Zedong
- 55 "Take — Train"
- 56 October birthstone
- 57 Speedometer stat
- 58 Witnessed
- 59 Obtains
- 60 Thanksgiving veggie
- 61 Wapiti

DOWN

- 1 Actress Jessica
- 2 Heath
- 3 Wide-eyed
- 4 Cowboy's sweetie
- 5 Secondhand
- 6 Trembled
- 7 Hoses are hooked up to them
- 8 Praise in verse
- 9 Clay, today
- 10 Fellows
- 12 Old West
- 15 California grape valley
- 19 Zero
- 21 Atl. counterpart
- 23 Badminton barrier
- 25 One
- 26 Baseball team
- 27 Scored 100 on
- 28 Jellies' mates
- 29 Physical
- 30 Drunkard
- 31 Sinbad's bird
- 35 Definite article
- 38 Past
- 40 Exist
- 42 Delicious
- 45 California grape valley
- 47 You, old-style
- 48 Rod's partner
- 49 Tug
- 50 Trot
- 51 Gorilla
- 52 Cistern
- 54 Resistance measure

© 2014 King Features Synd., Inc.

FEAR KNOT

By: rj johnson

CONQUER THE WHIRLED

- YFE
- ♥ NAPTLE
- TREEP
- ♥ AGTN
- NORGLE
- ♥ ARG
- ♥ TEFL
- GINFE
- ♥ LPA
- PERPIG
- GINYL
- ♥ ERFI

Unscramble these twelve letter strings to form each into an ordinary word (ex. HAGNEC becomes CHANGE). Prepare to use only ONE word from any marked (♥) letter string as each unscrambles into more than one word (ex. ♥RATHE becomes HATER or EARTH or HEART). Fit each string's word either across or down to knot all twelve strings together.

NEW! 30 Fear Knot puzzles \$3.50 • Six Volumes • Order at rbmall.com

Puzzles4Kids

by Helene Hovanec

CODED RIDDLE

Change each letter to the one that comes immediately BEFORE it in the alphabet to find a riddle and its answer.

Here's a copy of the alphabet to guide you:

A B C D E F G H I J K L M N O P Q R S T U V W X Y Z

X I B U I B T U X P I F B E T , U I S F F

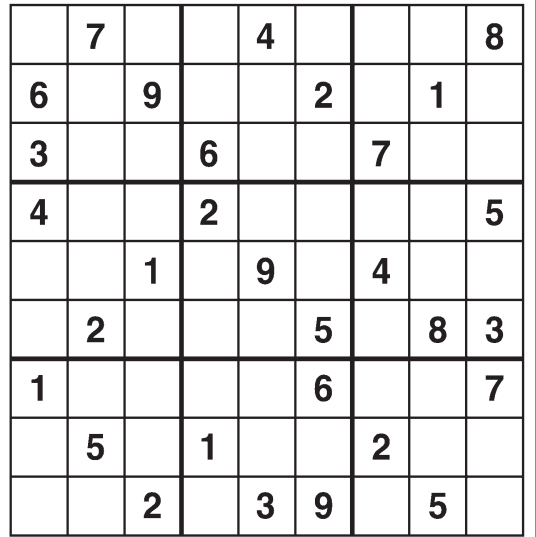
B S N T B O E U I S F F M F H T ? B S P C P U

X J U I T Q B S F Q B S U T .

For more puzzle fun, go to www.brainzles.com

Weekly SUDOKU

by Linda Thistle



Place a number in the empty boxes in such a way that each row across, each column down and each small 9-box square contains all of the numbers from one to nine.

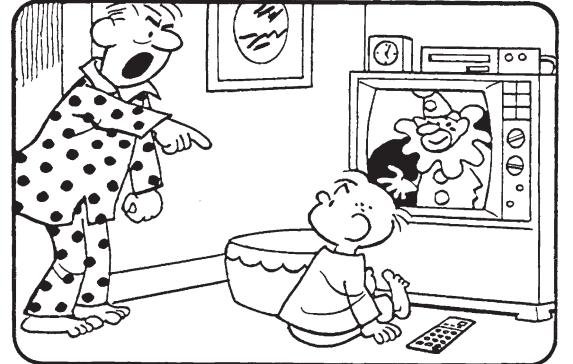
DIFFICULTY THIS WEEK: ★★

★ Moderate ★★ Challenging
★★★ HOO BOY!

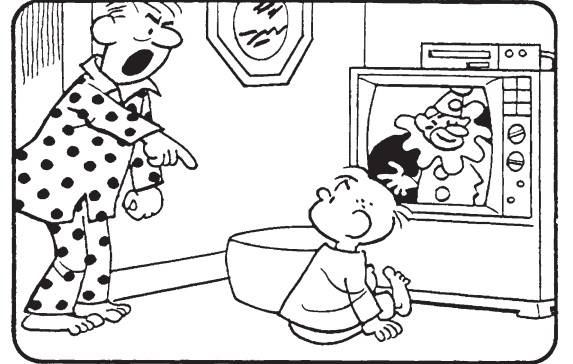
© 2014 King Features Synd., Inc.

HOCUS-FOCUS

BY HENRY BOLTINOFF



Find at least six differences in details between panels.



Differences: 1. Arm is missing. 2. Clock is turned. 3. Haslock scallop is missing. 4. Clock is different. 5. Clock is turned. 6. Remote control is missing.

New! 24 HOCUS FOCUS puzzles \$3.50 • 24 Volumes • Order at: rbmall.com

Just Like Cats & Dogs

by Dave T. Phipps



WHAT IS WITH THESE FANCY RESTAURANTS? ANY ENTREE I CAN'T SPELL, MUCH LESS DETECT WHICH FOOD GROUP IT FALLS INTO, ALWAYS COSTS THE MOST? GEEZ, I FEEL LIKE I'M ON "FEAR FACTOR!"

© 2014 King Features Synd., Inc. All rights reserved.

Even Exchange

by Donna Pettman

Each numbered row contains two clues and two 6-letter answers. The two answers differ from each other by only one letter, which has already been inserted. For example, if you exchange the A from MASTER for an I, you get MISTER. Do not change the order of the letters.

- | | | | |
|------------------------|-------------|----------------------|-------------|
| 1. Toast topping | U _ _ _ _ | Sour tasting | I _ _ _ _ |
| 2. Pathfinder | _ _ _ U _ _ | F. _ Fitzgerald | _ _ _ T _ _ |
| 3. Red gem | _ _ _ _ T _ | Collect a harvest | _ _ _ _ R |
| 4. Provide evidence | _ _ _ _ V _ | Writing style | _ _ _ S _ _ |
| 5. Very flexible | _ _ I _ _ _ | Walk heavily | _ _ U _ _ _ |
| 6. Linger | _ _ _ _ R _ | Late for school | _ _ _ D _ _ |
| 7. Braying pack animal | D _ _ _ _ | Mischievous primate | M _ _ _ _ |
| 8. Hotel guest | _ _ D _ _ _ | Lumberjack | _ _ G _ _ _ |
| 9. Select | _ _ _ S _ _ | Household task | _ _ _ R _ _ |
| 10. Plenty | _ _ M _ _ _ | Garden of Eden fruit | _ _ P _ _ _ |

Salome's Stars

U.S.

MAGIC MAZE ● SECRETARIES OF STATE

OLHEBXUROLIEBYV
SQNKZKHEBYWTROL
JCLINTONGEBYWUR
PNKSIGLDOBZXVST
QMUSKIEUOSMFRKH
IGOISECCHRICEAG
YWUNUSQPNSYDKII
NLJGRHFEHACAAYR
XLLEWOPVJUVBMB
SQPRNSELLUDMKJL
HFECBZYXVUTRQPA

Find the listed words in the diagram. They run in all directions forward, backward, up, down and diagonally.

- | | | | |
|---------|-----------|--------|--------|
| Baker | Haig | Monroe | Rusk |
| Clinton | Jay | Muskie | Shultz |
| Dulles | Kissinger | Powell | Vance |
| Fish | Madison | Rice | |

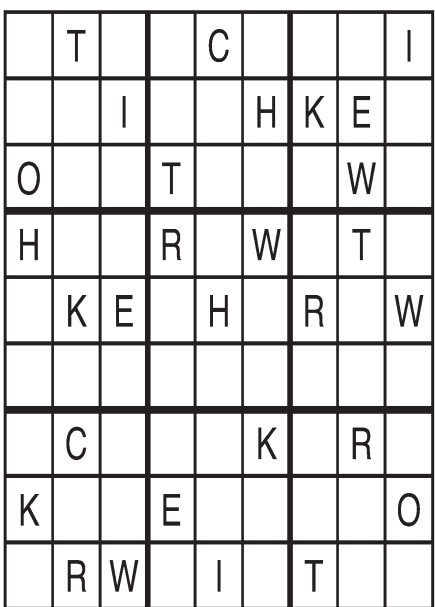
© 2014 King Features Synd., Inc. All rights reserved.

Letter Box

by Linda Thistle

Place a letter in the empty boxes in such a way that each row across, each column down and each small 9-box square contains all of the letters listed above the diagram. When completed, the row indicated will spell out a word or words.

C E H I K O R T W



→

ARIES (March 21 to April 19) Events could inspire adventurous Lambs looking to make a major career or personal move. But as always, get all the facts before rushing into any sort of deal or commitment.

TAURUS (April 20 to May 20) What seems to be a great opportunity could cause even usually practical Taureans to ignore their inner caution cues. Best to move carefully to avoid falling into unseen traps.

GEMINI (May 21 to June 20) Need a holiday now that the seasonal festivities are behind you? Good idea. Plan to go someplace wonderful. You'll return refreshed and more than ready for a new challenge.

CANCER (June 21 to July 22) Progress continues to be made on that pesky workplace problem. Meanwhile, don't assume a personal situation will work itself out. Best to get more involved earlier than later.

LEO (July 23 to August 22) Catnaps are definitely recommended for Leos and Leonas who had been going at a hectic pace over the holidays. Adding relaxation time to your schedule helps restore your overdrawn energy reserves.

VIRGO (August 23 to September 22) Sure, some of the new friends you made over the holidays might move out of your life at some point. But at least one might show significant "staying power" with some encouragement.

LIBRA (September 23 to October 22) Encourage family members to join you in supporting a relative who could be facing a difficult emotional challenge in the New Year. Showing your love and concern helps keep his or her hopes up.

SCORPIO (October 23 to November 21) While a long-deferred decision suddenly might take on some urgency after news on a related matter, you still need to weigh all factors carefully before deciding one way or the other.

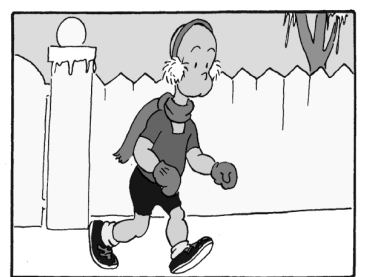
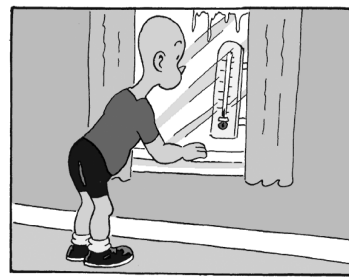
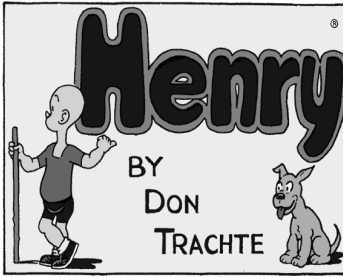
SAGITTARIUS (November 22 to December 21) This is a good time to reassess the earlier plan you made for the New Year. Some elements you felt you could depend on to make it work might no longer carry that assurance.

CAPRICORN (December 22 to January 19) Forming a renewed connection with a former associate is only the first step toward working out your new plans. Be prepared for problems, and deal with them as soon as they arise.

AQUARIUS (January 20 to February 18) A romantic situation that was going smoothly not too long ago might take a new turn. Be honest about your feelings before you decide whether to follow it or take another path.

PISCES (February 19 to March 20) The wise Pisces (that's you, of course) will make sure everyone knows you plan to keep your options open and listen to all sides of the situation before making any decisions.

BORN THIS WEEK: Your honest approach to life and living is always an inspiration for others fortunate enough to know you.



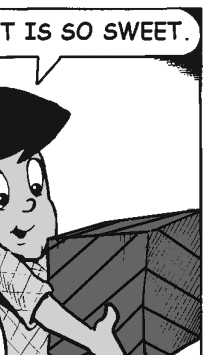
R.F.D.

by Mike Marland



Amber Waves

by Dave T. Phipps



The Spats

by Jeff Pickering

