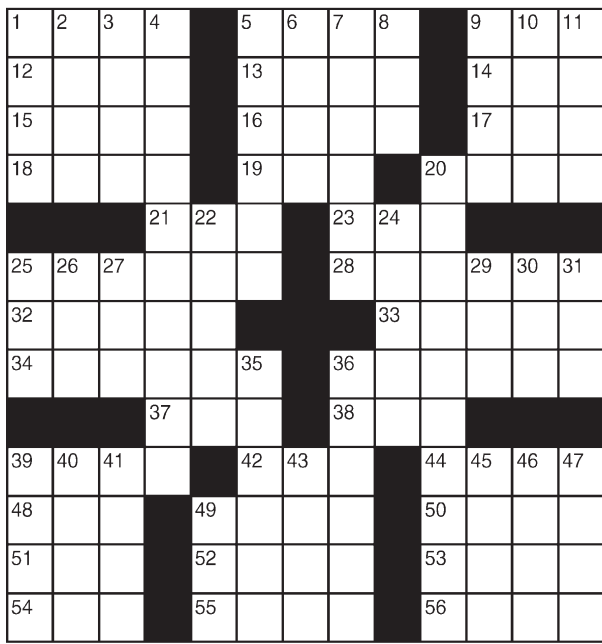


King Crossword

ACROSS

- 1 Actor Cobb
- 5 One
- 9 Upper limit
- 12 City of India
- 13 Forbidden act
- 14 In vitro cells
- 15 Standard
- 16 Solidarity symbol
- 17 Archaeological site
- 18 Being, to Brutus
- 19 Illustrations
- 20 Green stone
- 21 Tackle moguls
- 23 Ostrich's cousin
- 25 Woodsy shout
- 28 1983 Michener bestseller
- 32 The sort who'll court
- 33 Leg bone
- 34 Ahead
- 36 Swell
- 37 Catcher's place?
- 38 List-ending abbr.
- 39 Play area
- 42 Meadow
- 44 "Phooey!"
- 48 Praise in verse
- 49 Boring



- 50 Capri, e.g.
- 51 Triumphed
- 52 Malaria symptom
- 53 Deposited
- 54 "Acid"
- 55 Pinochle
- 56 Pairs
- 7 Foot part
- 8 Youngster
- 9 Last few notes
- 10 Enthusiastic, plus
- 11 Senate staffer
- 20 TV's "French Chef"
- 22 Massachusetts politico
- 24 Sacred composition
- 25 Low card
- 26 Charged bit
- 27 Tend the grass
- 29 "The View"
- film-wise
- 30 Medical research org.
- 31 rotation duration
- 35 Flood
- 36 Rang out
- 39 Prolonged cry of grief
- 40 Fusses
- 41 Tear asunder
- 43 Hebrew month
- 45 Biblical brother
- 46 Advertising award
- 47 Kesey and Follett
- 49 Beavers' creation
- airer
- 30 Medical research org.
- 31 rotation duration
- 35 Flood
- 36 Rang out
- 39 Prolonged cry of grief
- 40 Fusses
- 41 Tear asunder
- 43 Hebrew month
- 45 Biblical brother
- 46 Advertising award
- 47 Kesey and Follett
- 49 Beavers' creation

DOWN

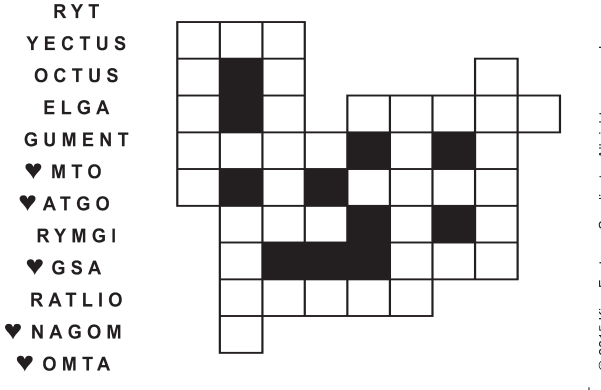
- 1 Highway division
- 2 Hollywood clashers
- 3 Blunders
- 4 Chef with an eponymous award
- 5 Prejudiced
- 6 Bleak,

© 2015 King Features Synd., Inc.

FEAR KNOT

By: rj johnson

CONQUER THE WHIRLED



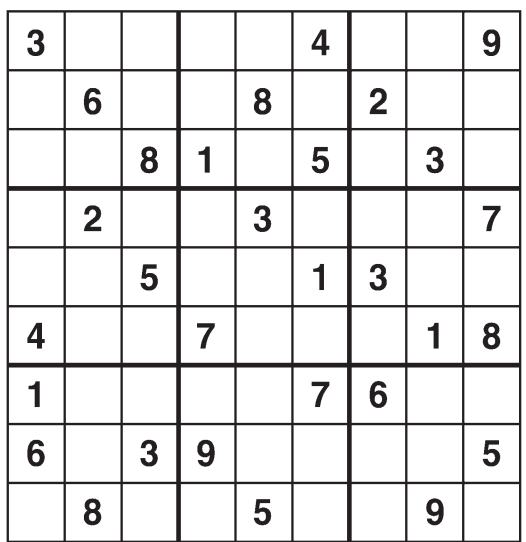
- RYT
- YECTUS
- OCTUS
- ELGA
- GUMENT
- ♥ MTO
- ♥ ATGO
- RYMGI
- ♥ GSA
- RATLIO
- ♥ NAGOM
- ♥ OMTA

Unscramble these twelve letter strings to form each into an ordinary word (ex. HAGNEC becomes CHANGE). Prepare to use only ONE word from any marked (♥) letter string as each unscrambles into more than one word (ex. ♥ RATHE becomes HATER or EARTH or HEART). Fit each string's word either across or down to knot all twelve strings together.

NEW! 30 Fear Knot puzzles \$3.50 • Six Volumes • Order at rbmamall.com

Weekly SUDOKU

by Linda Thistle



Place a number in the empty boxes in such a way that each row across, each column down and each small 9-box square contains all of the numbers from one to nine.

DIFFICULTY THIS WEEK: ★★

- ★ Moderate
- ★★ Challenging
- ★★★ HOO BOY!

© 2015 King Features Synd., Inc.

Puzzles4Kids

by Helene Hovanec

WORD FUN

Study the two words on each line to find the ONE letter in the left column that is NOT in the word in the right column. Write the extra letter on the blank space. Then read DOWN to answer this riddle:

WHAT DO YOU CALL A SLOPPY LITTLE CAT?

- | | | | | | |
|--------|-----|-------|--------|-----|-------|
| ARENAS | ___ | SNARE | LARIAT | ___ | TIARA |
| RACKET | ___ | CARET | DANISH | ___ | HANDS |
| BEIRUT | ___ | BRUTE | WHITEN | ___ | WHINE |
| ESCORT | ___ | CORES | ARREST | ___ | REARS |
| LATEST | ___ | STEAL | ANGELS | ___ | SLANG |
| BARLEY | ___ | BLARE | BALDER | ___ | BLADE |
| | | | WADERS | ___ | DRAWS |
| | | | SEARCH | ___ | CHASE |

For more puzzle fun, go to www.brainzles.com

Just Like Cats & Dogs by Dave T. Phipps



MAGIC MAZE • MEAT

A J G D A X V S Q N K I A F D
 A X V T Q O M J H F C N A Y W
 U R P N L J H F K D D B Z X V
 T R Q O M R K T O P I H F D B
 S A U C E Z E Y O W I R V R T
 R Q R K O K N T H L E E K E I
 H F C E R D A C T T A D S V Z
 X A W A K T F N N U V N A A U
 P S M R O C A U Q O C I N E M
 K T H E R M O M E T E R J L H
 I H S F E C L L L A B G D C B

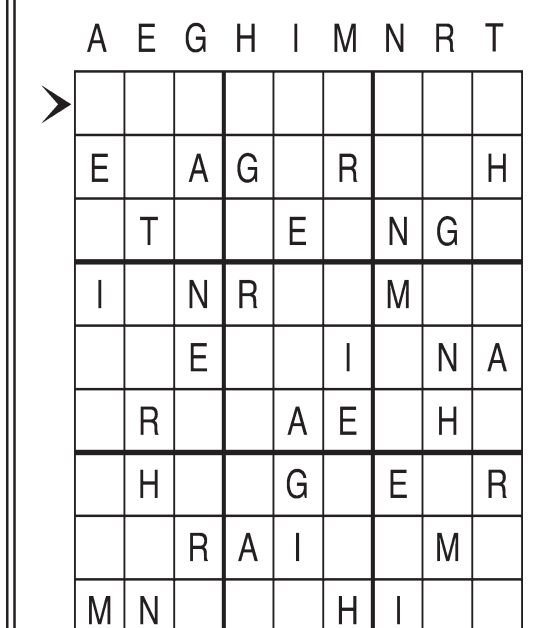
Find the listed words in the diagram. They run in all directions forward, backward, up, down and diagonally.

And potatoes Grinder Locker Pies
 Ball Head Man Sauce
 Counter Hook Market Thermometer
 Cutter Loaf Packer

© 2015 King Features Syndicate, Inc. All rights reserved.

Letter Box by Linda Thistle

Place a letter in the empty boxes in such a way that each row across, each column down and each small 9-box square contains all of the letters listed above the diagram. When completed, the row indicated will spell out a word or words.



© 2011 King Features Synd., Inc.

Even Exchange by Donna Pettman

Each numbered row contains two clues and two 6-letter answers. The two answers differ from each other by only one letter, which has already been inserted. For example, if you exchange the A from MASTER for an I, you get MISTER. Do not change the order of the letters.

- | | | | |
|----------------------|---------------|----------------------|---------------|
| 1. Bread ingredient | ___ _ _ U _ _ | Carpet locale | ___ _ _ O _ _ |
| 2. Goddess of wisdom | ___ _ _ _ A | Greek capital | ___ _ _ _ S |
| 3. The very edge | V _ _ _ _ | Meld | M _ _ _ _ |
| 4. Set down | ___ _ _ C _ _ | Dish | ___ _ _ T _ _ |
| 5. Bleach | ___ L _ _ _ | Large twig | ___ R _ _ _ |
| 6. Cabbage location | ___ _ T _ _ | Scorch | ___ _ R _ _ |
| 7. Tally | ___ _ O _ _ | Frighten | ___ _ A _ _ |
| 8. Ship's kitchen | G _ _ _ _ | Napa or Silicone | V _ _ _ _ |
| 9. Take it easy | ___ _ _ X _ _ | Certain running race | ___ _ _ Y _ _ |
| 10. Canoe oar | ___ A _ _ _ | Small pool of water | ___ _ _ U _ _ |

© 2015 King Features Synd., Inc.

Salome's Stars

ARIES (March 21 to April 19) A pesky health problem should clear up soon. Meanwhile, travel -- both for personal as well as for business reasons -- is strong in the Aries aspect this week, and well into the next.

TAURUS (April 20 to May 20) Look for Bo-vines to be on the move this week, whether it's traveling for fun or for business. Other "moves" include workplace adjustments and, for some, relationship changes.

GEMINI (May 21 to June 20) Geminis who have just gone through a hectic period involving job and/or family matters might want to take some well-earned time out to relax and restore those drained energy levels.

CANCER (June 21 to July 22) A romantic situation seems to have stalled, just when the Moon Child was expecting it to go forward. Could that be a bad case of miscommunication going on. Talk it over openly and honestly.

LEO (July 23 to August 22) Showing a genuine interest in something that's important to a friend, family member or colleague could open a communication line that had been pretty much shut down for a while.

VIRGO (August 23 to September 22) Making a potentially life-changing decision takes as much knowledge as you can gather, plus determination and patience. Take your time working it out. Don't let anyone rush you.

LIBRA (September 23 to October 22) You should be back on schedule and heading in the right direction after clearing up a misunderstanding. But there could still be some setbacks. If so, correct them immediately.

SCORPIO (October 23 to November 21) A business matter keeps you pretty busy, but try to squeeze in time to be with family as well as close friends. You need the good vibrations you get from people who care for you.

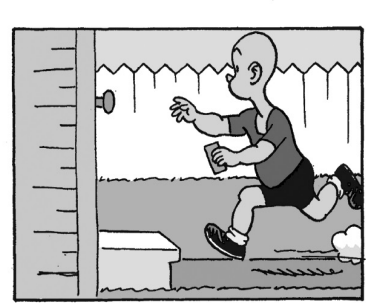
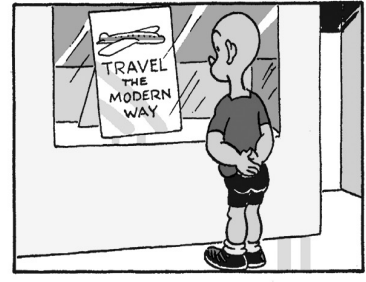
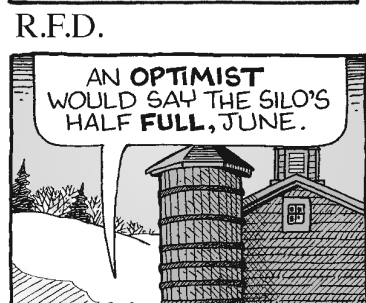
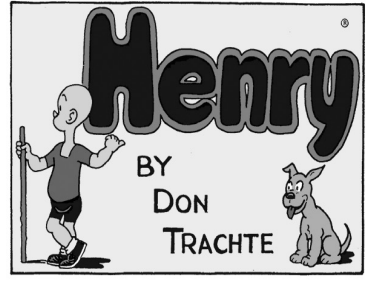
SAGITTARIUS (November 22 to December 21) Investing in an attractive prospect (business or personal) with little or no information can be risky. Avoid future problems by getting all the facts before you act.

CAPRICORN (December 22 to January 19) Someone close to you might have an unexpected reaction to a decision you feel you're prepared to make. Listen to his or her point of view. It could prove to be surprisingly helpful.

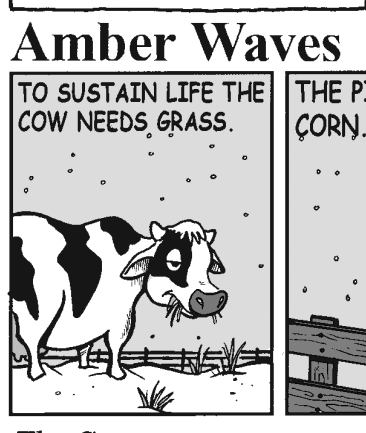
AQUARIUS (January 20 to February 18) Don't give up yet. That once warm, personal relationship that seems to be cooling off fast could recover with some tender, loving care, and who better than you to provide it?

PISCES (February 19 to March 20) Career matters are strong this week. You might want to enter a training program to enhance your skills. Also, consider getting professional help in preparing a brilliant resume.

BORN THIS WEEK: You have a way of respecting the feelings of others, which is one reason people feel comfortable having you in their lives.



R.F.D.



Amber Waves



The Spats



© 2014 King Features Syndicate Inc.