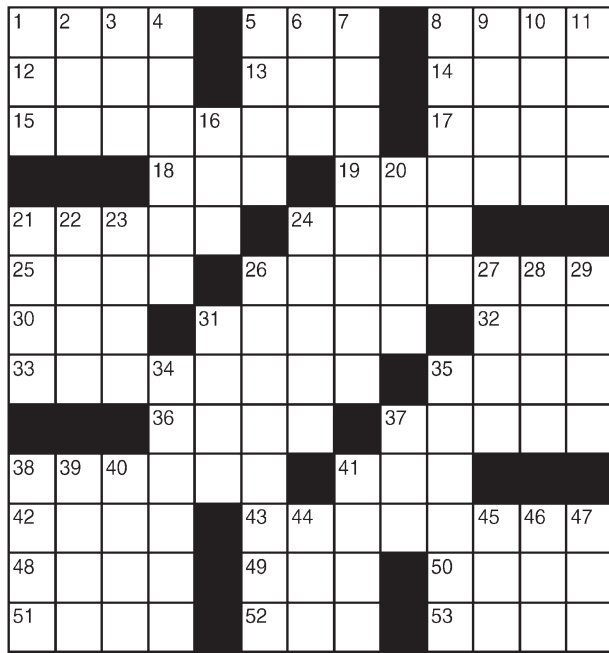


King Crossword

- ACROSS**
- 1 Appear to be
 - 5 Erstwhile acorn
 - 8 KFC flavor
 - 12 Notion
 - 13 Eisenhower
 - 14 Hodge-podge
 - 15 Chris Martin's band
 - 17 Desire
 - 18 Weep
 - 19 Ersatz bullets
 - 21 Pass along
 - 24 Piglet's papa
 - 25 Memo acronym
 - 26 Protect oneself
 - 30 Doctrine
 - 31 Prognosticators
 - 32 Half of XIV
 - 33 Fan of Jerry Garcia et al.
 - 35 Coop group
 - 36 Engrossed
 - 37 Fellows
 - 38 Poisons
 - 41 Jazz style
 - 42 Acknowledge
 - 43 Winter

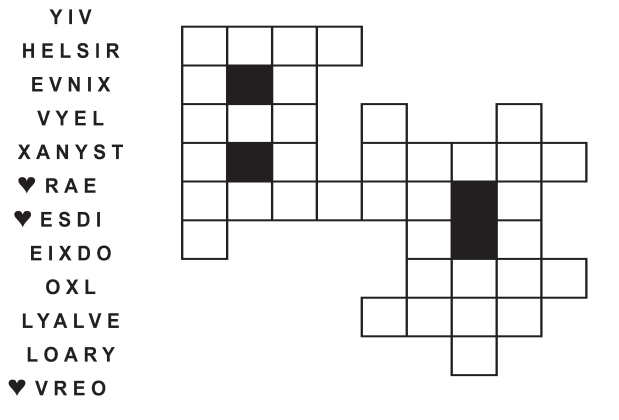


- DOWN**
- 1 "— 'em, Fido!"
 - 2 Tokyo's old name
 - 3 Wet wriggler
 - 4 Wild and crazy
 - 5 Unctuous
 - 6 Alias (Abbr.)
 - 7 Computer
 - 8 ailment
 - 9 Sphere
 - 10 Met melody
 - 11 Deuce
 - 12 Like some humor
 - 13 Abound
 - 14 Collections
 - 15 Sphere
 - 16 Met melody
 - 17 Deuce
 - 18 Like some humor
 - 19 Abound
 - 20 Deposits
 - 21 Incursion
 - 22 Being, to
 - 23 Dalai —
 - 24 Speak sheepishly?
 - 25 X-rated entertainment, maybe
 - 26 Still
 - 27 "—
 - 28 "—
 - 29 component
 - 30 "The Da Vinci Code"
 - 31 Counterfeit director
 - 32 Verve
 - 33 Skaters' mecca
 - 34 Androids
 - 35 Snoop
 - 36 Deposits
 - 37 Incursion
 - 38 Being, to
 - 39 Dalai —
 - 40 Speak sheepishly?
 - 41 X-rated entertainment, maybe
 - 42 Still
 - 43 "—
 - 44 Misbe-havin' "
 - 45 Ph.D. hurdle
 - 46 Counterfeit
 - 47 About to nod off
 - 48 Jazz fan, maybe
 - 49 Pantheon member
 - 50 Expansive
 - 51 Always
 - 52 Staff member?
 - 53 Infant
 - 54 Blunder
 - 55 Raw rock
 - 56 Falsehood
 - 57 Water barrier

© 2015 King Features Synd., Inc.

FEAR KNOT

By: rj Johnson
CONQUER THE WHIRLED



YIV
HELSIR
EVNIX
VYEL
XANYST
♥RAE
♥ESDI
EIXDO
OXL
LYALVE
LOARY
♥VREO

Unscramble these twelve letter strings to form each into an ordinary word (ex. HAGNEC becomes CHANGE). Prepare to use only ONE word from any marked (♥) letter string as each unscrambles into more than one word (ex. ♥RATHE becomes HATER or EARTH or HEART). Fit each string's word either across or down to knot all twelve strings together.

NEW! 30 Fear Knot puzzles \$3.50 • Six Volumes • Order at rbmamall.com

Puzzles4Kids

by Helene Hovanec

WORD FUN

Study the two words on each line to find the ONE letter in the left column that is NOT in the word in the right column. Write the extra letter on the blank space. Then read DOWN to answer this riddle:

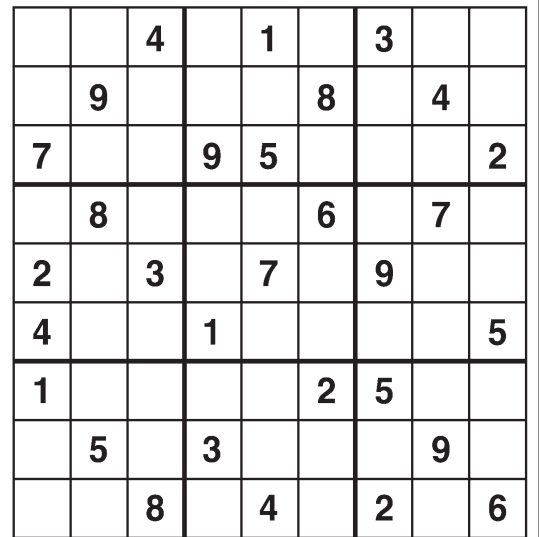
WHAT DO YOU CALL YELLOW BUGS WITH LOTS OF LEGS AND BIG MOUTHS?

- | | | | | | | |
|--------|-----|-------|-----|--------|-----|-------|
| DIRECT | ___ | TRIED | ___ | DAMPER | ___ | DREAM |
| HIDDEN | ___ | DINED | ___ | ARISEN | ___ | NEARS |
| SOCIAL | ___ | COILS | ___ | SWIVEL | ___ | WIVES |
| SETTLE | ___ | STEEL | ___ | LATHER | ___ | HEART |
| TASTER | ___ | TEARS | ___ | VARIED | ___ | DIVER |
| CEREAL | ___ | CLEAR | ___ | CARTER | ___ | REACT |
| SPRINT | ___ | PINTS | ___ | HASSLE | ___ | LEASH |

For more puzzle fun, go to www.brainzles.com

Weekly SUDOKU

by Linda Thistle



Place a number in the empty boxes in such a way that each row across, each column down and each small 9-box square contains all of the numbers from one to nine.

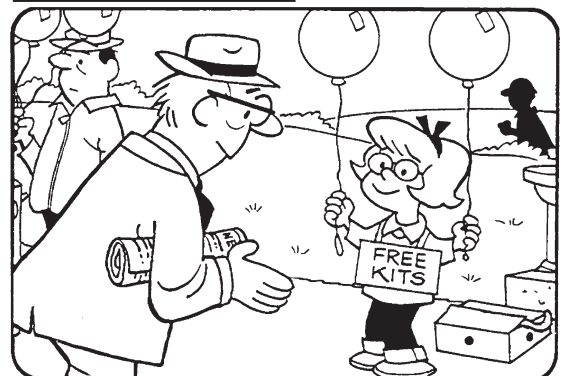
DIFFICULTY THIS WEEK: ★★

★ Moderate ★★ Challenging
★★★ HOO BOY!

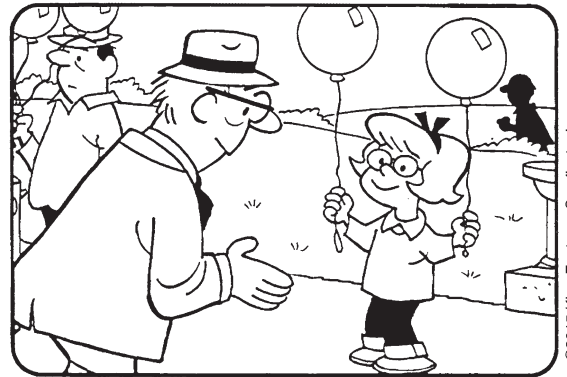
© 2015 King Features Synd., Inc.

HOCUS-FOCUS

BY HENRY BOLTINOFF



Find at least six differences in details between panels.



Differences: 1. Zipper is missing, 2. Hat is missing, 3. Paper is missing, 4. Sign is missing, 5. Balloon is moved, 6. Box is missing.

Just Like Cats & Dogs

by Dave T. Phipps



ELEMENTS MAGIC MAZE ● DISCOVERED SINCE 1900

P A X M U I R H O B V S M Q M
O L A M U I N F A H J H U U U
E D C M A I X M V M T R I P I
N L U J E H L F U U D N S A C
B Y F (B E R K E L I U M) S M N
X V E T N R I P B N T T A U A
O M R K O I I C U O A E H I R
G E M D D B U N I T N Z T R F
X W I U A T U M I U R Q O U N
L J U I R G F N D L M C A C L
Y X M U I N E H R P W V T S R

Find the listed words in the diagram. They run in all directions forward, backward, up, down and diagonally

Americium Dubnium Hassium Radon
Astatine Fermium Lutetium Rhenium
Berkelium Francium Nobelium Ununium
Curium Hafnium Plutonium

© 2015 King Features Syndicate, Inc. All rights reserved.

Letter Box

by Linda Thistle

Place a letter in the empty boxes in such a way that each row across, each column down and each small 9-box square contains all of the letters listed above the diagram. When completed, the row indicated will spell out a word or words.



© 2011 King Features Synd., Inc.

Even Exchange

by Donna Pettman

Each numbered row contains two clues and two 6-letter answers. The two answers differ from each other by only one letter, which has already been inserted. For example, if you exchange the A from MASTER for an I, you get MISTER. Do not change the order of the letters.

- | | | | |
|--------------------------|-----------|-----------------------|-----------|
| 1. Up to date | ___ C ___ | Be penitent | ___ P ___ |
| 2. Candle glow | ___ L ___ | Picture holder | ___ R ___ |
| 3. Trigger or Mr. Ed | ___ R ___ | Abode | ___ U ___ |
| 4. Using a two-wheeler | B ___ | Norseman of old | V ___ |
| 5. Emerald's color | ___ N ___ | From Athens | ___ K ___ |
| 6. Leftover food | ___ C ___ | Belt | ___ T ___ |
| 7. Raid | ___ K ___ | Affix | ___ H ___ |
| 8. Georgia produce | ___ A ___ | Bird's roost | ___ R ___ |
| 9. Group of hotel rooms | S ___ | Exactly | Q ___ |
| 10. Seinfeld's specialty | ___ D ___ | Pleasingly attractive | ___ L ___ |

Salome's Stars

ARIES (March 21 to April 19) You might be a bit shaken by a friend's request. But before the Lamb leaps to conclusions, insist on a full explanation. You still might say no, but at least you'll know what you're saying no to.

TAURUS (April 20 to May 20) Seeing red over those nasty remarks by someone with an ax to grind? Of course you are. So get out there and give your supporters the facts they need to get the truth out.

GEMINI (May 21 to June 20) A changing situation should get you to reassess your vacation plans and make any adjustments as soon as possible. And don't fret — the change most likely will turn out for the better.

CANCER (June 21 to July 22) Don't put off dealing with any negative feelings that might be left over from a recent confrontation. The sooner all is resolved, the sooner you can move forward with fewer complications.

LEO (July 23 to August 22) Leos and Leonas might feel the urge to redecorate their dens, and that can turn into a good opportunity to strengthen family ties by putting the whole pride to work to make it happen.

VIRGO (August 23 to September 22) Look for the most efficient way to get a job done quickly and well. Taking more time than you need to make it look more challenging is a short-sighted move you might regret later on.

LIBRA (September 23 to October 22) Travel remains strong in your aspect. And this time, it could involve someone traveling a great distance to come to see you. Meanwhile, an important matter suddenly could need your attention.

SCORPIO (October 23 to November 21) A workplace situation becomes a lot more bothersome than you'd expected. Be careful not to be pulled into all that anger. Look for support among others who also want to avoid trouble.

SAGITTARIUS (November 22 to December 21) Cheer up, lonely lovers, wherever you are. Just when you thought you'd been deleted from Cupid's database, the chubby cherub proves that's just not so. Congratulations.

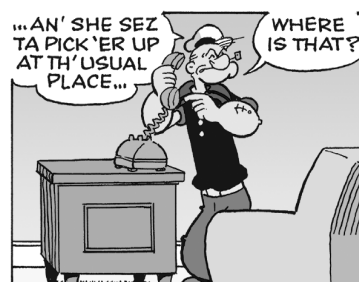
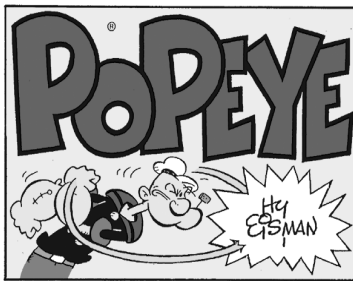
CAPRICORN (December 22 to January 19) A casual relationship could take a more serious turn. Are you ready for it? Your stars say you are. Paired Sea Goats also will find a renewed richness in their relationships.

AQUARIUS (January 20 to February 18) Meeting a collaborator with new ideas seems to be a dream come true. But for both your sakes, be sure all your legal i's are dotted and t's are crossed before you start working together.

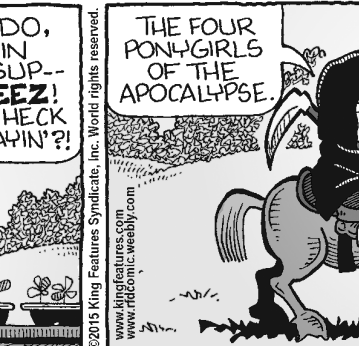
PISCES (February 19 to March 21) A romantic overture flatters the usually unflappable Fish. But since it's a sincere from-the-heart gesture, go ahead and enjoy it. A minor health problem responds well to treatment.

BORN THIS WEEK: You have the warm heart of a Taurus and the sensitivity of a Gemini. You would make a wonderful leader. So go ahead: Run for office.

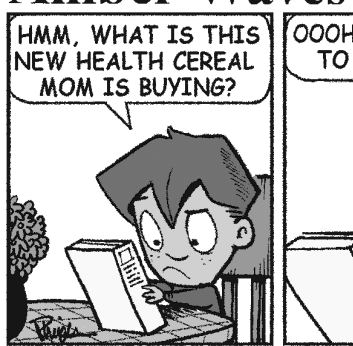
© 2014 King Features Syndicate Inc.



R.F.D. by Mike Marland



Amber Waves by Dave T. Phipps



The Spats by Jeff Pickering



© 2014 King Features Syndicate Inc.