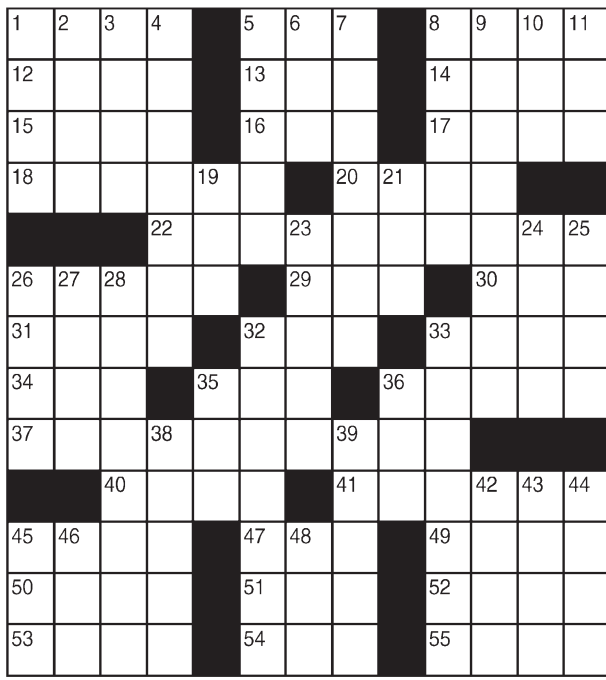


King Crossword

ACROSS

- 1 Cleans the floors
- 5 Pouch
- 8 One of the Three Bears
- 12 Admitting customers
- 13 Time of your life?
- 14 Change for a five
- 15 Draped dress
- 16 Sailor
- 17 Western state
- 18 Deceptive
- 20 Melody
- 22 Lengthwise, to 16-Across
- 26 In spades
- 29 Actress Farrow
- 30 Mai — (cocktail)
- 31 Exceptional
- 32 Corral
- 33 Check
- 34 Film trickery, for short
- 35 One of the Brady Bunch
- 36 Cartoonist Trudeau
- 37 Everywhere
- 40 Surround
- 41 Attachments
- 45 Blunder
- 47 Rowing need
- 49 Help in crime
- 50 Padlock fastener
- 51 Oilfield struc-



- 2 ture
- 3 100 pence
- 4 provider
- 5 8
- 6 100 pence
- 7 provider
- 8 100 pence
- 9 Enemy of an "army"?
- 10 Shade of green
- 11 Shade of blonde
- 12 Admitting customers
- 13 Time of your life?
- 14 Change for a five
- 15 Draped dress
- 16 Sailor
- 17 Western state
- 18 Deceptive
- 20 Melody
- 22 Lengthwise, to 16-Across
- 26 In spades
- 29 Actress Farrow
- 30 Mai — (cocktail)
- 31 Exceptional
- 32 Corral
- 33 Check
- 34 Film trickery, for short
- 35 One of the Brady Bunch
- 36 Cartoonist Trudeau
- 37 Everywhere
- 40 Surround
- 41 Attachments
- 45 Blunder
- 47 Rowing need
- 49 Help in crime
- 50 Padlock fastener
- 51 Oilfield struc-

DOWN

- 1 Rolling stone's lack
- 2 Colorful fish
- 3 Graceful woman
- 4 Cold symptom
- 5 Attendant of Bacchus
- 6 — Khan
- 7 Foolproof

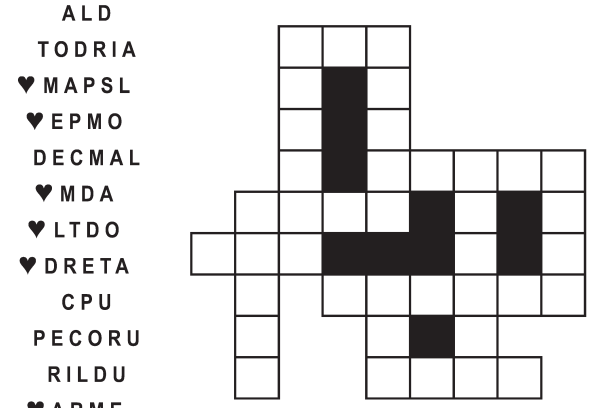
- 8 100 pence
- 9 Enemy of an "army"?
- 10 Shade of green
- 11 Shade of blonde
- 12 Admitting customers
- 13 Time of your life?
- 14 Change for a five
- 15 Draped dress
- 16 Sailor
- 17 Western state
- 18 Deceptive
- 20 Melody
- 22 Lengthwise, to 16-Across
- 26 In spades
- 29 Actress Farrow
- 30 Mai — (cocktail)
- 31 Exceptional
- 32 Corral
- 33 Check
- 34 Film trickery, for short
- 35 One of the Brady Bunch
- 36 Cartoonist Trudeau
- 37 Everywhere
- 40 Surround
- 41 Attachments
- 45 Blunder
- 47 Rowing need
- 49 Help in crime
- 50 Padlock fastener
- 51 Oilfield struc-

© 2020 King Features Synd., Inc.

FEAR KNOT

By: rj johnson

DOUBT? ... OR DARE!



Unscramble these twelve letter strings to form each into an ordinary word (ex. HAGNEC becomes CHANGE). Prepare to use only ONE word from any marked (♥) letter string as each unscrambles into more than one word (ex. ♥RATHE becomes HATER or EARTH or HEART). Fit each string's word either across or down to knot all twelve strings together.

Puzzles4Kids

by Helene Hovanec

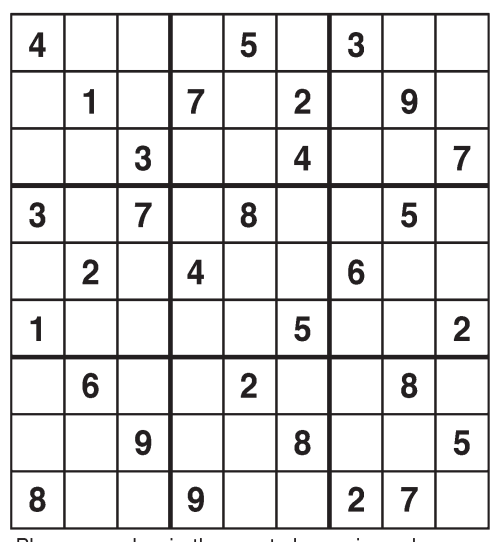
RIDDLE SEARCH — MANY WAYS TO EAT
Look up, down, and diagonally, both forward and backward to find every word on the list. Circle each one as you find it. When all the words are circled, take the UNUSED letters and write them on the blanks below. Go from left to right and top to bottom to find the answer to this riddle: **How does a train eat?**

| | | | | | | | | | | |
|---|---|---|---|---|---|---|---|---|---|---|
| C | H | O | M | P | | | | | | |
| C | H | O | W | D | O | W | | | | |
| D | I | G | I | N | | | | | | |
| D | I | N | E | T | G | T | L | E | | |
| W | P | D | I | G | I | N | A | B | E | |
| O | I | O | B | E | S | E | K | A | B | D |
| D | G | P | B | C | M | T | E | O | O | |
| W | O | L | L | A | W | S | I | G | N | |
| O | U | H | E | U | E | A | N | O | W | |
| H | T | V | C | H | G | T | S | E | W | |
| C | A | M | U | N | C | H | O | M | P | |
| H | A | V | E | A | S | N | A | C | K | |

Riddle answer: _____

Weekly SUDOKU

by Linda Thistle



Place a number in the empty boxes in such a way that each row across, each column down and each small 9-box square contains all of the numbers from one to nine.

DIFFICULTY THIS WEEK: ♦♦

- ♦ Moderate
- ♦♦ Challenging
- ♦♦♦ HOO BOY!

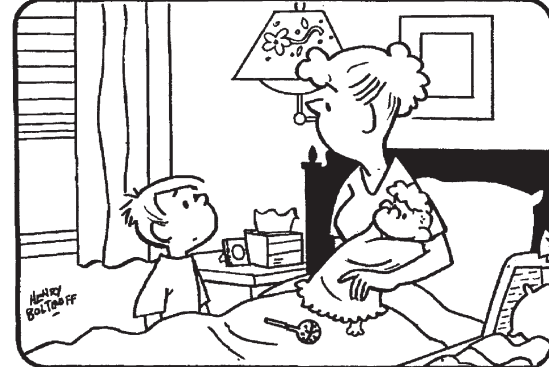
© 2020 King Features Synd., Inc.

HOCUS-FOCUS

BY HENRY BOLTINOFF



Find at least six differences in details between panels.



Differences: 1. Lamp is different. 2. Curtain is shorter. 3. Hatle is moved. 4. Foot is showing. 5. Sleeve is longer. 6. Tissue is higher.

Just Like Cats & Dogs

by Dave T. Phipps



MAGIC MAZE • SONGWRITERS HALL OF FAME

R K H E B Y V N S P M N J H E
 B Y V T Q O L M O I G I D P B
 Y W T N Y R I P M N K L O I F
 D B K Y I E R W U S N R Q O M
 S T E P H E N F O S T E R K I
 F D R D D N T T B E D B L Z X
 W U N N I W H S R E G E E S S
 Q O O L O N A K N A L Y D L J
 S W P H F D C V A R C Y W V T
 N O M I S S E Q P N E C L K I
 J H F E C R B Z Y W V B M U S

Find the listed words in the diagram. They run in all directions forward, backward, up, down and diagonally

- | | | | |
|-----------|----------|-----------|----------------|
| Anka | Dylan | McCartney | Sondheim |
| Berlin | Gershwin | Porter | Stephen Foster |
| Bernstein | Joplin | Seeger | Wonder |
| Denver | Kern | Simon | |

© 2020 King Features Syndicate, Inc. All rights reserved.

Letter Box

by Linda Thistle

Place a letter in the empty boxes in such a way that each row across, each column down and each small 9-box square contains all of the letters listed above the diagram. When completed, the row indicated will spell out a word or words.

| | | | | | | | | |
|---|---|---|---|---|---|---|---|---|
| A | B | D | E | I | N | O | P | R |
| | R | | E | D | A | | | |
| N | | | A | | I | | | |
| | E | O | | | | | B | |
| | B | | N | | | | | P |
| I | N | D | | O | | | | |
| | | A | | P | | N | R | |
| | | | | | | | | |
| O | | | D | I | P | E | | |
| | A | E | R | | | | | I |

© 2013 King Features Synd., Inc.

Even Exchange

by Donna Pettman

Each numbered row contains two clues and two 6-letter answers. The two answers differ from each other by only one letter, which has already been inserted. For example, if you exchange the A from MASTER for an I, you get MISTER. Do not change the order of the letters.

- | | | | |
|-------------------------|-------------|------------------------|-------------|
| 1. Of greater height | — A — — — — | Penn's magical partner | — E — — — — |
| 2. "The ___ Year Itch" | — — — — N | Separate | — — — — R |
| 3. Tear-causing bulb | O — — — — | Workers' organization | U — — — — |
| 4. Indulge in self-pity | — — — — W | Clobber | — — — — P |
| 5. Fully fledged | — — — — W — | Grumble | — — — — A |
| 6. Bread leavening | Y — — — — | Celebration | F — — — — |
| 7. Gentleman farmer | — — — — E | Wriggle and fidget | — — — — M |
| 8. Hermit | — — — — N — | Also-ran | — — — — S |
| 9. Originate | — — — — T | Pleat | — — — — S |
| 10. Leo's deep roar | — E — — — — | Large sea wave | — I — — — — |

© 2020 King Features Synd., Inc.

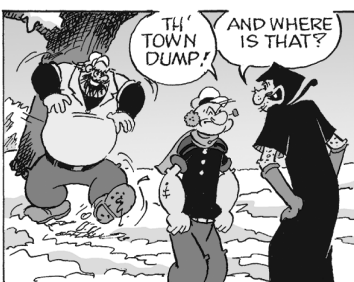
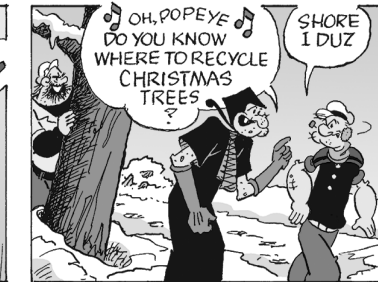
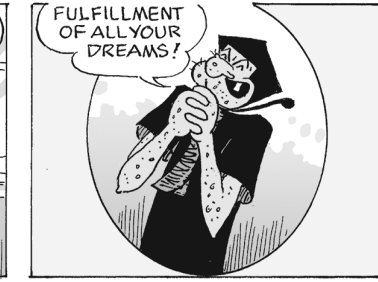
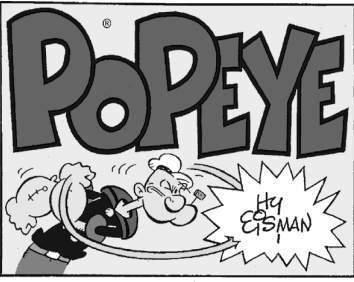
Salome's Stars

ARIES (March 21 to April 19) Use that Arian charm to help make a difficult workplace transition easier for everyone. News about a long-awaited decision can be confusing. Don't jump to conclusions.
TAURUS (April 20 to May 20) Although you might well be tempted to be more extravagant than you should be at this time, I'm betting you'll let your sensible Bovine instinct guide you toward moderation.
GEMINI (May 21 to June 20) An opportunity for travel could come with some problems regarding travel companions and other matters. So be sure you read all the fine print before you start packing.
CANCER (June 21 to July 22) Make an effort to complete your usual workplace tasks before volunteering for extra duty. Scrambling to catch up later on could create some resentment among your colleagues.
LEO (July 23 to August 22) A financial matter could have you rethinking your current spending plans. You might want to recheck your budget to see where you can cut back on expenses until the situation improves.
VIRGO (August 23 to September 22) One way to make your case for that promotion you've been hoping for might be to put your planning skills to work in helping to shape up a project that got out of hand. Good luck.
LIBRA (September 23 to October 22) Be careful about "experts" who have no solid business background. Instead, seek advice on enhancing your business prospects from bona fide sources with good success records.
SCORPIO (October 23 to November 21) Standing up to support a colleague's viewpoint — even if it's unpopular — can be difficult if you feel outnumbered. But you'll win plaudits for your honesty and courage.
SAGITTARIUS (November 22 to December 21) While progress continues on resolving that recurring problem, you might feel it's taking too long. But these things always need to develop at their own pace. Be patient.
CAPRICORN (December 22 to January 19) Someone close to you might have a financial problem and seek your advice. If you do decide to get involved, insist on seeing everything that might be relevant to this situation.
AQUARIUS (January 20 to February 18) A personal matter takes an interesting turn. The question is, do you want to follow the new path or take time out to reconsider the change? Think this through before deciding.
PISCES (February 19 to March 20) Moving into a new career is a big step. Check that offer carefully with someone who has been there, done that, and has the facts you'll need to help you make your decision.
BORN THIS WEEK: Your warmth and generosity both of spirit and substance endears you to everyone.

R.F.D.



by Mike Marland



Amber Waves



The Spats



by Dave T. Phipps



by Jeff Pickering



© 2019 King Features Synd., Inc.