

Engineers end losing skid with win over Western Hills

The Estill County Engineers ended their losing skid at three games with a 10-point win, 53-43, over Western Hills on Monday night at home in front of a sparse crowd.

Senior Joe Benton who always scores and rebounds well, cut apart the Wolverines' defense as he scored 37 points for the game.

Western Hills brought in a veteran group of nearly all juniors and seniors but Benton easily matched any defense they put in front of him with the help of a great supporting cast that included Landon Napier, Will Isfort, Cobbe Click, Dyllan Long, Ethan Webb and Dustin Beeler.

Joe's teammates scored very few points but worked hard to make Benton's offense unstoppable.

Western Hill made it close near the end of the game and were within one, 35-34 with 6:54 to

play, but Benton and the Engineers rolled off 13 straight points to pull ahead 48-34 at 3:00.

Sophomore Napier who normally is the team's #2 scorer had trouble connecting and managed only four points. He had led Estill in the 71-59 loss against Buckhorn with 22 points while Benton had 20.

The Engineers had dropped three games straight after going 15-5 and are now 16-8. They lost to Fleming County by a single point, 47-46, and to Breathitt County by only two, 57-55.

The Engineers are homestanding against Lee County on Friday in a double-header and at Beattyville on Monday, also in a double-header.

They also play Pendleton County at home on Saturday and will be taking on the top team in the region, Hazard Bulldogs, away on the 21st.



Estill County's Engineers (in white, from left), junior Cobbe Click, senior Joe Benton, and junior Dyllan Long battle the Western Hills Wolverines' junior center Eric Gabbard (dark uniform, #25) for the ball during Monday's action at home. Estill won 53-43 behind 37 points from Benton.

Lady Engineers pick up another win

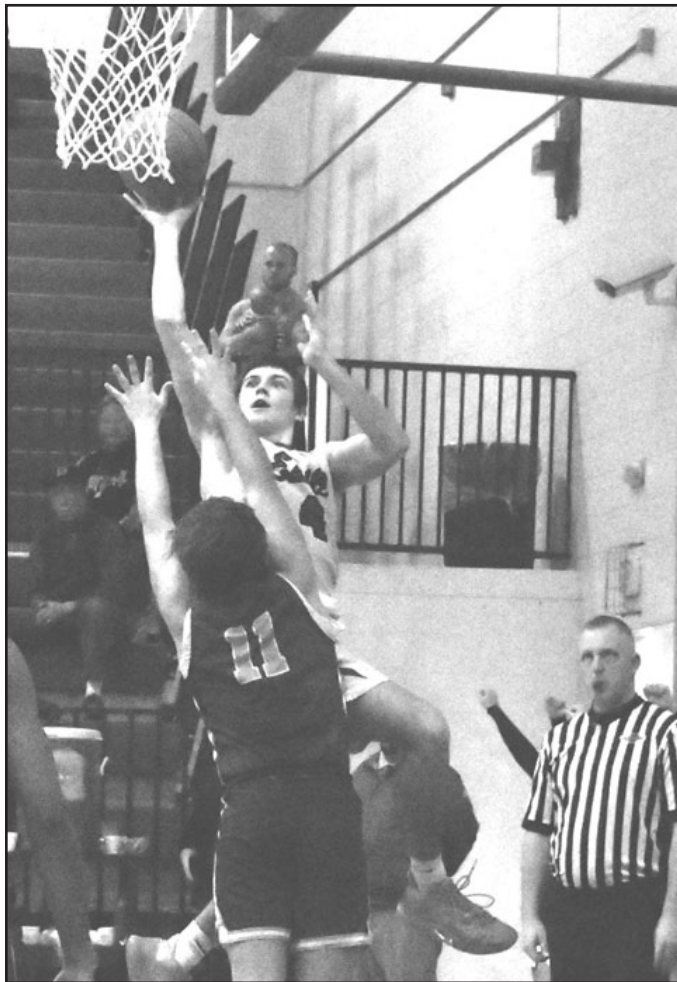
The Estill Lady Engineers picked up another win, 59-47, over Lexington Christian to improve to 8-15 as the season winds down. Mia Hale and Kaylee Riddle combined for 30-points (16 and 14) in the win.

Earlier, the Lady Engineers had fallen 57-56 to Madison Central despite 15 points from freshman Haley Angel, 14 from Hale

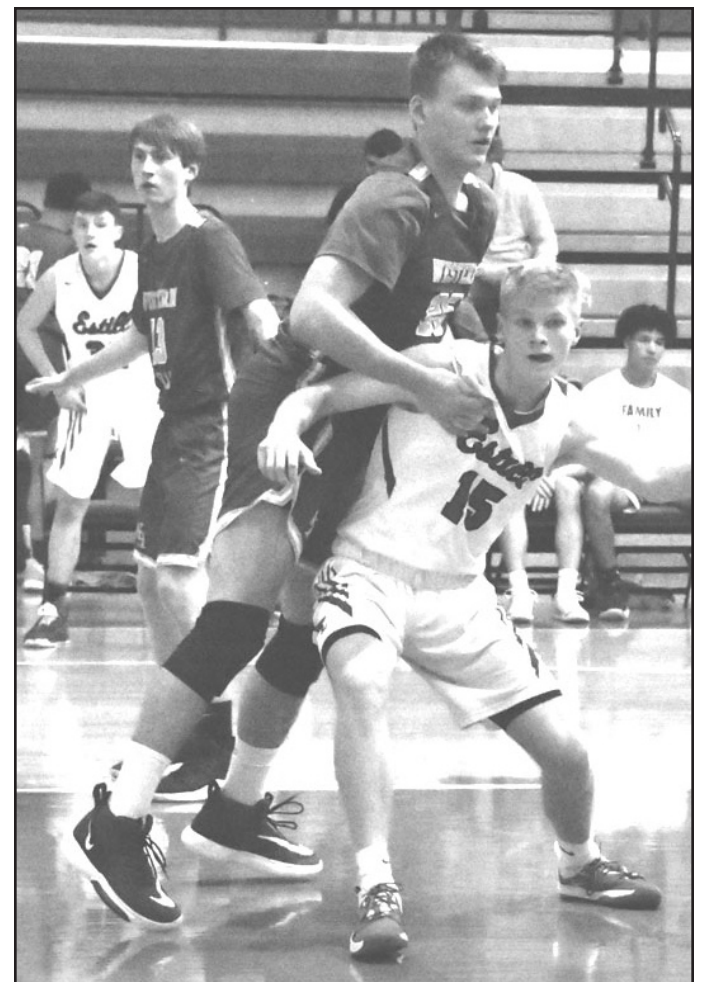
and seven from Estill 7th grader Jayci Long.

Mia scored 13 and Jayci had 12 in an earlier loss to an excellent Berea Lady Pirates team.

Estill plays Lee County at home Friday and away on Monday with a home contest against Leslie County on Saturday. They finish regular season at home on February 20th against Montgomery.



Estill County's Engineer senior Joe Benton slips behind the defense again on Monday night at Estill to put in two of his 37 points against Western Hills.



Estill County's Engineer junior Cobbe Click had a tough night against the much taller Western Hills junior center Eric Gabbard on Monday night at Estill.

Flynn surpasses 1,000 at Georgetown

Estill County High School Lady Engineers basketball standout Kennedy Flynn surpassed another milestone as a senior at Georgetown College where she scored her 1,000th point for the Tigers on Friday, Feb. 7th.

Georgetown was playing Thomas More University and the opponent got hot early while the Tigers struggled. But, the highlight of the night came with 18 seconds left when senior Kennedy Flynn got a pass in the

lane off an offensive rebound by Cindy Lin and to break the 1,000 mark for her career. She had three free throws as her only points until the late bucket.

At the conclusion of the game, the Irvine native was sitting at 1,001 in 111 games played for a 9.0 average.

Flynn is the all-time leading scorer for Estill County with 3,042 career points. She is the daughter of Greg and Gina Flynn of Irvine.

Estill Lady Engineers 2019-20 Girls Basketball

Feb 14	Lee County H	8:00
Feb 15	Leslie County H	4:00
Feb 17	Lee County A	6:00
Feb 20	Montgomery County	. H	7:30

Coach Ruth Hughes

Estill County Engineers 2019-20 Boys Basketball

Feb 14	Lee County H	6:00
Feb 15	Pendleton County H	4:30
Feb 17	Lee County A	8:00
Feb 21	Hazard A	7:30

Coach Jon B. Bentley

UK COOPERATIVE EXTENSION SERVICE University of Kentucky - College of Agriculture



Estill County 4-H Youth Development
Paighton E. Lewis
 Estill County Extension Office

In 2019, Estill County raised \$1,800.00 through the Ag Tag Voluntary Donation program. That's money that goes directly to Kentucky 4-H, Kentucky FFA and Kentucky Proud to support our agriculture community (and its future) here locally and across the Commonwealth.

Agriculture is vital to the livelihood of every Kentuckian and it is through programs like Kentucky 4-H and Kentucky FFA that we continue to instill these values in youth. Each simple \$10 donation made when renewing an Ag Tag culminates to have a major

impact on the youth of Estill County.

Kentucky 4-H is one of the most important and influential youth programs in our state and our county. Across Kentucky over 290,000 youth ages 9 to 19 learn about leadership, citizenship and life skills in "learn-by-doing" experiences such as communications and public speaking, through agriculture projects like livestock judging, science projects with robotics, 4-H camp, Teen Conference, and many other 4-H programs and activities.

Here in Estill County, over 800 youth belong to 4-H and are active in

Inspire County's Future Leaders - Ag Tag \$10 Donation Benefits 4-H



YOUR DONATION
 GIVE \$10 WITH EACH AG TAG

YOUR COMMUNITY
 HALF OF THE FUNDS FOR 4-H AND FFA COME BACK TO YOUR LOCAL COUNCILS AND CHAPTERS IN YOUR COUNTY.

OUR LEADERS
 SUPPORT STATEWIDE PROGRAMS IMPACTING 274,000 STUDENTS ENROLLED IN 4-H, FFA AND KY PROUD MEMBERS.

By making a \$10 donation with your Ag Tag, you are choosing to invest directly into the future of Kentucky agriculture. Donations are divided equally between FFA, 4-H and Kentucky Proud with half going directly back to your County. Thank you for your support.



programs and activities such as teen club, shooting sports, cooking clubs, leadership conferences, 4-H Camp, livestock club, and county and state fair.

As we look to March

for 2020 Ag Tag renewals, we ask that you remember to make your voluntary donations on each farm license plate you renew. If every resident in Estill County renewing an Ag Tag were

to make the voluntary \$10 donation, \$9,000.00 could be raised! Think of the impact that could have on your community and its future leaders! Please help us in grow

ing leaders, strengthening the agriculture community and funding opportunities for Estill County youth this March through Ag Tag voluntary donations!

Equal Opportunity Provider