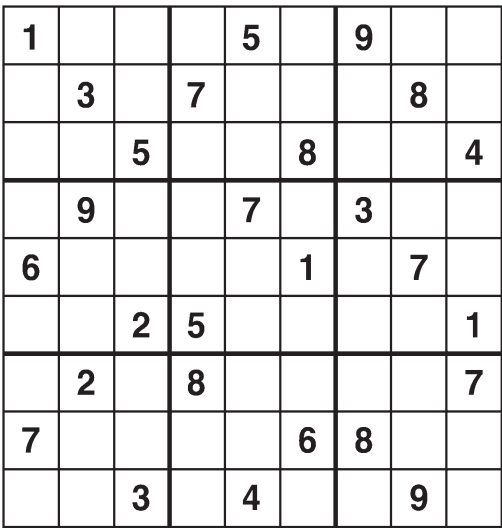


# Weekly SUDOKU

by Linda Thistle



Place a number in the empty boxes in such a way that each row across, each column down and each small 9-box square contains all of the numbers from one to nine.

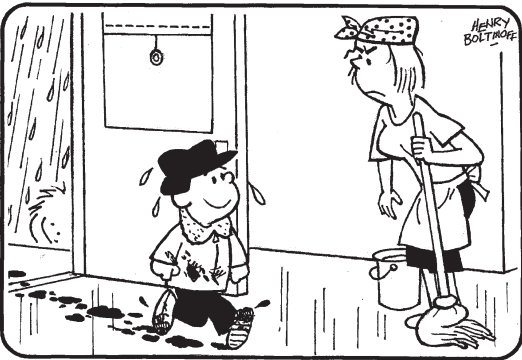
**DIFFICULTY THIS WEEK:** ♦♦

♦ Moderate ♦♦ Challenging  
♦♦♦ HOO BOY!

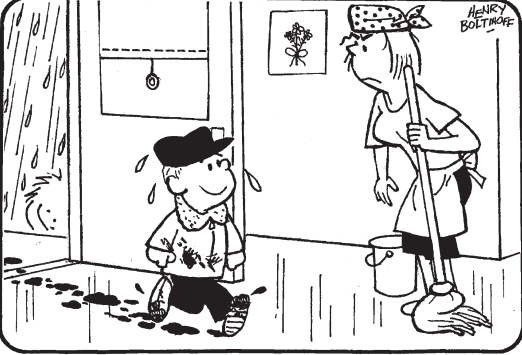
© 2020 King Features Synd., Inc.

## HOCUS-FOCUS

BY HENRY BOLTIFF



Find at least six differences in details between panels.



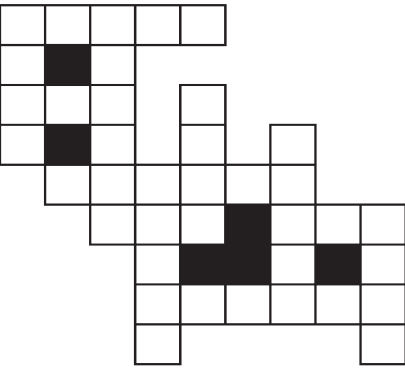
Differences: 1. Bandanna is backward. 2. Picture has been added. 3. Shade is lower. 4. Bucket has no water. 5. Boy's hat is different. 6. Broom handle is taller.

# FEAR & KNOT

By: rj Johnson

DOUBT? ...OR DARE!

- IRG
- NEGRUN
- ♥GHITN
- WOGN
- YUROVE
- ♥NIK
- ♥RAYN
- KRIDE
- ♥AWY
- ♥RHADDEE
- VALGE
- NKGI



Unscramble these twelve letter strings to form each into an ordinary word (ex. HAGNEC becomes CHANGE). Prepare to use only ONE word from any marked (♥) letter string as each unscrambles into more than one word (ex. ♥RATHE becomes HATER or EARTH or HEART). Fit each string's word either across or down to knot all twelve strings together.

## Puzzles4Kids

by Helene Hovanec

### RIDDLE SEARCH - STOCKING STUFFERS

Look up, down, and diagonally, both forward and backward to find every word on the list. Circle each one as you find it. When all the words are circled, take the UNUSED letters and write them on the blanks below. Go from left to right and top to bottom to find the answer to this riddle: Who delivers Christmas presents to dogs?

CANDY	S	C	I	E	N	C	E	K	I	T	
GAME	T	M	A	P	A	S	T	E	S	E	
GLOVES	I	T	E	N	G	A	M	Y	E	P	
GLUE	C	A	D	N	L	S	Y	R	N	P	
KEY RING	K	Y	F	T	O	L	K	I	I	U	
MAGAZINE	E	L	R	A	P	E	V	I	N	Z	P
MAGNET	R	L	A	A	V	E	C	I	G	A	G
MAP	S	O	C	K	S	N	L	O	G	L	
PASTE	P	D	S	A	W	E	S	S	A	U	
PENCILS	E	L	Z	Z	U	P	G	A	M	E	
PENS											
PUPPET											
PUZZLE											
SCARF											
SCIENCE KIT											
SINKY											
SOCKS											
STICKERS											

Riddle answer: \_\_\_\_\_

## Even Exchange

by Donna Pettman

Each numbered row contains two clues and two 6-letter answers. The two answers differ from each other by only one letter, which has already been inserted. For example, if you exchange the A from MASTER for an I, you get MISTER. Do not change the order of the letters.

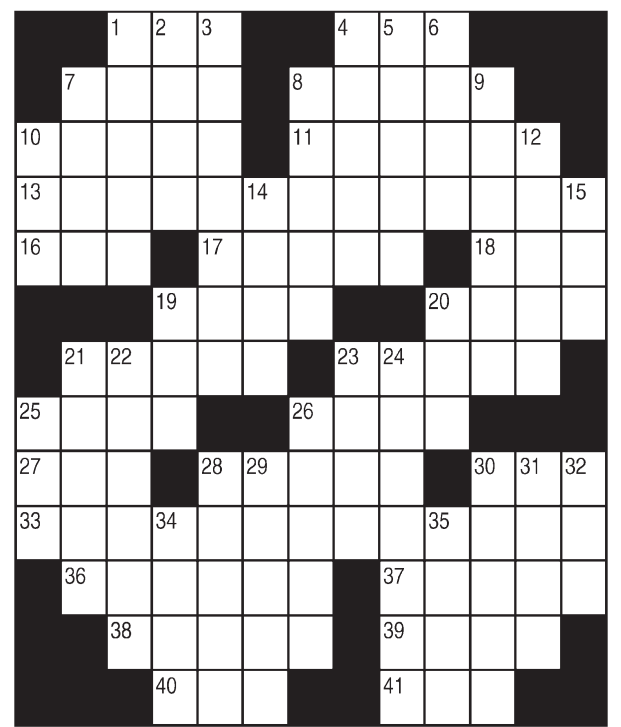
- |                           |           |                   |           |
|---------------------------|-----------|-------------------|-----------|
| 1. Mini car               | ___ O ___ | Wiring material   | ___ P ___ |
| 2. Underage               | ___ _ R   | No. Dakota city   | ___ _ T   |
| 3. Fruit of the vine      | ___ P ___ | Student's mark    | ___ D ___ |
| 4. Nervous                | T ___ _   | Thick             | D ___ _   |
| 5. Mindful                | ___ R ___ | No longer napping | ___ K ___ |
| 6. Hinge sound            | ___ _ K   | Cry like a pig    | ___ _ L   |
| 7. "Soul Provider" singer | ___ L ___ | Bean Town         | ___ S ___ |
| 8. Long-necked bird       | ___ N ___ | Wooden box        | ___ T ___ |
| 9. Smallest amount        | ___ T ___ | Dog lead          | ___ H ___ |
| 10. Jump over             | ___ R ___ | Football meeting  | ___ D ___ |

© 2020 King Features Synd., Inc.

# King Crossword

### ACROSS

- 1 Vagrant
- 4 Poke
- 7 Femur or fibula
- 8 Elaine's last name on "Seinfeld"
- 10 Cook by direct heat
- 11 Silvery
- 13 Smooth-coated pooch
- 16 1/20 ton (Abbr.)
- 17 Humdinger
- 18 Moving truck
- 19 Namia's Aslan, e.g.
- 20 Antitoxins
- 21 Munchie
- 23 Enthusiasts' emotions
- 25 Roe provider
- 26 Group of quail
- 27 Debtor's letters
- 28 Muslim maiden
- 30 Thee
- 33 High-backed chairs
- 36 Earthling, in sci-fi
- 37 Flavor
- 38 Go over the books



- |                     |                          |                            |
|---------------------|--------------------------|----------------------------|
| 39 Spud's buds      | 8 Conductor's wand       | 23 Nil                     |
| 40 Always, in verse | 9 Whine                  | 24 Ousted                  |
| 41 Two, in Tijuana  | 10 English channel?      | 25 Bro or sis              |
|                     | 12 Signs of sorrow       | 26 Beyond well-done        |
|                     | 14 Kindle competitor     | 28 Throng                  |
|                     | 15 Genetic stuff         | 29 Where the elated walk   |
|                     | 19 Young fellow town     | 30 Affirmatives            |
|                     | 20 Put into words        | 31 Uneaten morsels         |
|                     | 21 Try for a two-pointer | 32 Work with               |
|                     | 22 Queasiness            | 34 Verifiable              |
|                     |                          | 35 Boxer's successful blow |

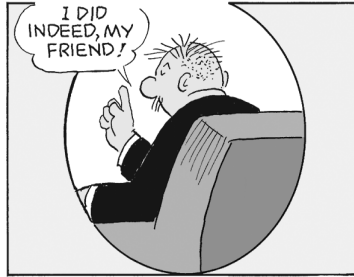
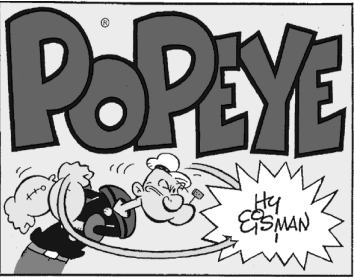
### DOWN

- 1 Give a leg up
- 2 One
- 3 Tuneful
- 4 Spanish wine
- 5 Mad
- 6 Tavern offering
- 7 Forehead

© 2020 King Features Synd., Inc.

## Just Like Cats & Dogs

by Dave T. Phipps



**ARIES** (March 21 to April 19) At this time you might want to resist that otherwise admirable Aries penchant for getting to the heart of a matter quickly. Keep in mind that a delicate situation calls for patience.

**TAURUS** (April 20 to May 20) Your aspects favor more diplomacy and fewer direct confrontations when dealing with a relationship problem. Avoiding hurt feelings can help in your search for the truth.

**GEMINI** (May 21 to June 20) Positive aspects are strong this week. Although you might still have to deal with some problems caused by a recent period of turmoil, you are making progress, and that's what counts.

**CANCER** (June 21 to July 22) A family matter could benefit from your counsel. But don't come into it unless invited, and don't stay if you feel uneasy. Just remember to reassure one and all that you'll be there for them.

**LEO** (July 23 to August 22) As the truth about an ongoing situation emerges, you could find that you were right to defer judgment before you had all the facts. Now would be a good time to move on to other matters.

**VIRGO** (August 23 to September 22) Your plans to take control of a personal situation because you feel you are best qualified could create resentment. Best to hear what everyone else involved in the matter has to say about it.

**LIBRA** (September 23 to October 22) Uncovering some surprising background facts about that ongoing personal matter could make you reconsider the extent of your involvement. A neutral family member offers advice.

**SCORPIO** (October 23 to November 21) Religious or spiritual themes start to dominate your aspect this week. This can serve as a counterweight to the mounting effects of the season's growing commercialization.

**SAGITTARIUS** (November 22 to December 21) Taking on that recent challenge impressed a lot of important decision-makers. Meanwhile, proceed with your holiday plans, and don't forget to include you-know-who in them.

**CAPRICORN** (December 22 to January 19) Disagreeing with an opinion you can't accept could be dicey, and your motives might be questioned. Best to wait to mount a challenge until you have support for your position.

**AQUARIUS** (January 20 to February 18) Getting involved in helping others in this increasingly hectic period not only makes the generous Aquarian feel good, but you could also gain a more substantive benefit from your actions.

**PISCES** (February 19 to March 20) The Piscean way of thinking clearly and objectively helps you resolve a complex situation without creating any ill will. Don't be surprised if your counsel is requested on another matter.

## R.F.D.



by Mike Marland

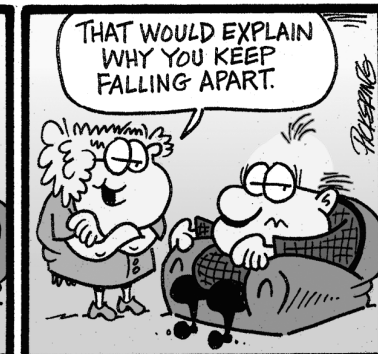
## Amber Waves

by Dave T. Phipps



The Spats

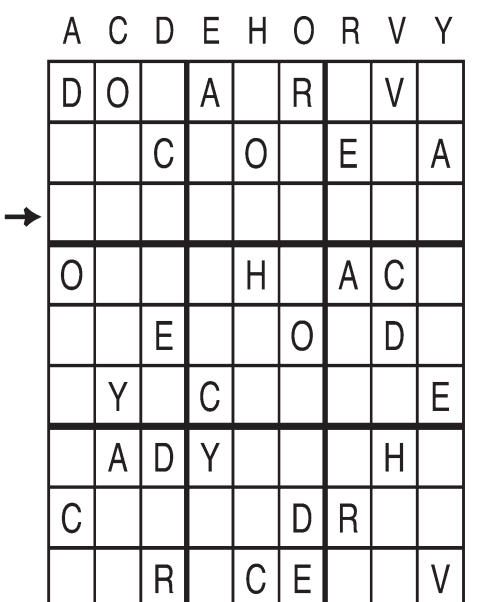
by Jeff Pickering



## Letter Box

by Linda Thistle

Place a letter in the empty boxes in such a way that each row across, each column down and each small 9-box square contains all of the letters listed above the diagram. When completed, the row indicated will spell out a word or words.



© 2010 King Features Synd., Inc.