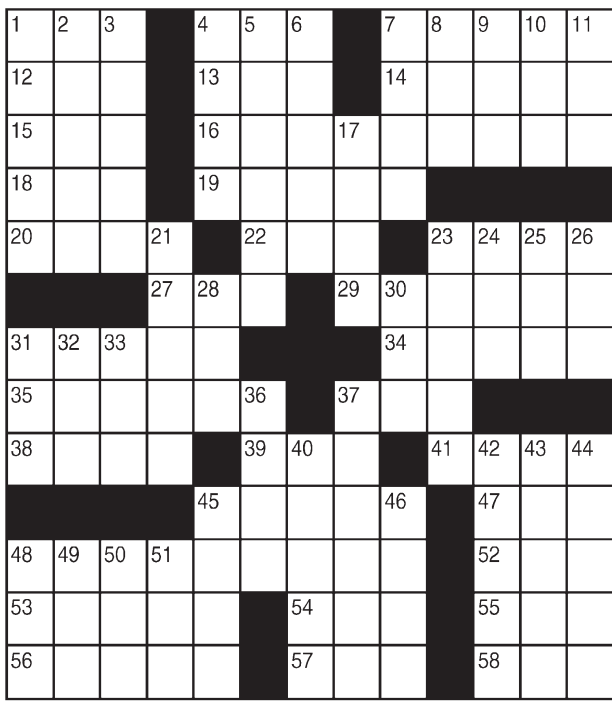


King Crossword

ACROSS

- 1 TGIF part
- 4 Bing's buddy
- 7 Block the flow
- 12 Just out
- 13 "Hail!"
- 14 Become one
- 15 Meadow
- 16 High-flying tourist
- 18 \$ dispenser
- 19 Soviet cooperative
- 20 Genius
- 22 Decorate Easter eggs
- 23 Boast
- 27 Discoverer's cry
- 29 Weaken, in a way
- 31 Nary a soul
- 34 Star in Orion's left foot
- 35 "Now" or "never"
- 37 Drench
- 38 TV dinner veggies
- 39 "Go, team!"
- 41 Wild and crazy
- 45 Rescues
- 47 "The Raven" writer
- 48 TV show for entrepreneurial hopefuls
- 52 Transgression
- 53 Asian nation



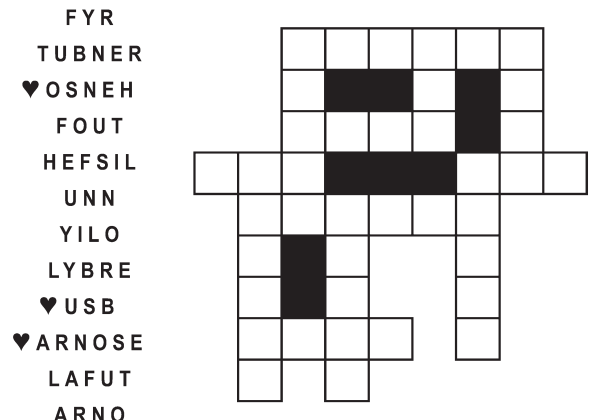
- 54 Hockey surface
- 55 Superlative ending
- 56 That is (Lat.)
- 57 "Ben-Hur" author Wallace
- 58 Vast expanse
- 32 Praise in verse
- 33 Eggs
- 36 Unruly kid?
- 37 From what place
- 40 Use
- 42 Church recesses
- 43 Din
- 44 Busybody
- 45 Old card game
- 46 Distort
- 48 Tackle moguls
- 49 Scuttle
- 50 Exist
- 51 Scale notes
- 7 One-on-one fight
- 8 Pismire
- 9 Bay State sch.
- 10 Multipurpose truck
- 11 Apiece
- 17 Start a garden
- 21 Regions
- 23 All-out attack
- 24 Carpet
- 25 Consumed
- 26 Solidify
- 28 That woman
- 30 Anger
- 31 Siesta

© 2020 King Features Synd., Inc.

FEAR & KNOT

By: rj johnson

DOUBT? ... OR DARE!



Unscramble these twelve letter strings to form each into an ordinary word (ex. HAGNEC becomes CHANGE). Prepare to use only ONE word from any marked (♥) letter string as each unscrambles into more than one word (ex. ♥RATHE becomes HATER or EARTH or HEART). Fit each string's word either across or down to knot all twelve strings together.

Puzzles4Kids

by Helene Hovanec

WORD FUN

Study the two words on each line to find the ONE letter in the left column that is NOT in the word in the right column. Write the extra letter on the blank space. Then read DOWN to answer this riddle:

HOW DO YOU CUT AN OCEAN IN HALF?

BOWING	___	BINGO	___	LEMONS	___	MELON
LASSIE	___	SEALS	___	EVADER	___	RAVED
SPROUT	___	POURS	___	VALISE	___	EVILS
THRONE	___	TONER	___	SPACES	___	CAPES
SPARSE	___	PRESS	___	BEAUTS	___	TUBES
				SWERVE	___	VEERS

Just Like Cats & Dogs

by Dave T. Phipps



MAGIC MAZE • CARING WORDS

EEBYSVVSQNRKHEBY
 WRTROCRLEJGEBYW
 UEARPNAEKISGDBZ
 XVRCSQRRVSOMKIG
 DECAIAAYEIWUSQP
 NALJCDHLFFGECAY
 XVYEELDERCAREFUL
 USMCQRLMPNEERAC
 NOERACNIKSMKEAJ
 HHFCERCBBHYZXVUC
 TREKATERACRIHR

Find the listed words in the diagram. They run in all directions forward, backward, up, down and diagonally

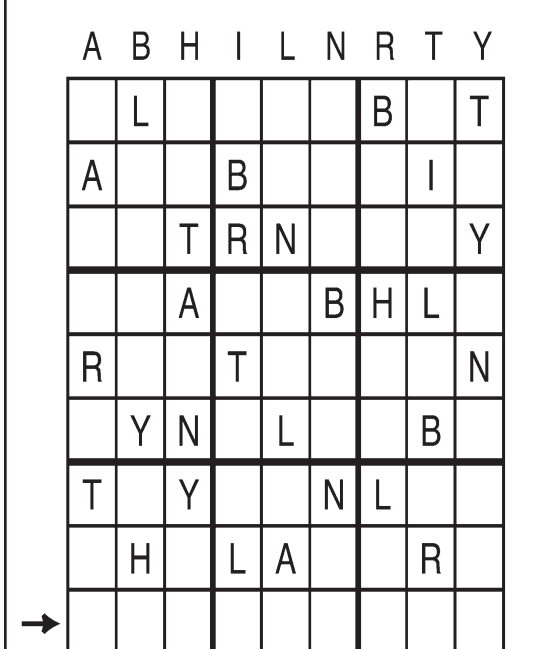
Careen	Caregiver	Child care	Home care
Career	Careless	Day care	Scare
Carefree	Caret	Elder care	Skin care
Careful	Caretaker	Hair care	

© 2020 King Features Syndicate, Inc. All rights reserved.

Letter Box

by Linda Thistle

Place a letter in the empty boxes in such a way that each row across, each column down and each small 9-box square contains all of the letters listed above the diagram. When completed, the row indicated will spell out a word or words.



Even Exchange

by Donna Pettman

Each numbered row contains two clues and two 6-letter answers. The two answers differ from each other by only one letter, which has already been inserted. For example, if you exchange the A from MASTER for an I, you get MISTER. Do not change the order of the letters.

1. Iberian capital	___ _ _ B ___ _	Boxer Sonny	___ _ _ T ___ _
2. Flambeau	___ _ _ R ___ _	Feel	___ _ _ U ___ _
3. Actress Field	___ _ _ L ___ _	Pretzel's flavor	___ _ _ T ___ _
4. Specialist	___ _ _ _ R ___ _	Anticipate	___ _ _ _ C ___ _
5. Reiterate	___ _ _ P ___ _	Put in the microwave	___ _ _ H ___ _
6. Leo's group	___ _ _ D ___ _	Cost	___ _ _ C ___ _
7. More recent	___ _ _ W ___ _	At no time	___ _ _ V ___ _
8. Air travel	___ _ _ L ___ _	Sudden scare	___ _ _ R ___ _
9. Beehive product	___ _ _ _ Y ___ _	Sharpened	___ _ _ _ D ___ _
10. President Ford	G ___ _ _ _ ___	Praise loudly	H ___ _ _ _ ___

© 2020 King Features Synd., Inc.

Salome's Stars

ARIES (March 21 to April 19) Change is still dominant for Rams and Ewes, both in the workplace and their private lives. This is also a good time to look at a possible relocation if that has been one of your goals.

TAURUS (April 20 to May 20) Doing things for others is what you do well. But don't forget that Bovines thrive on the arts, so make some time for yourself to indulge your passion for music and artistic expressions.

GEMINI (May 21 to June 20) While the Romantic Twin considers where to go for his or her upcoming vacation, the Practical Twin will start making travel plans now to take advantage of some great bargains.

CANCER (June 21 to July 22) Your sensitive nature helps you deal with a difficult emotional situation. Be patient and continue to show your sincere support wherever (and for whom) it is needed.

LEO (July 23 to August 22) You're making progress as you move through some unfamiliar territory. And while there might be a misstep or two along the way, overall you're heading in the right direction. Good luck.

VIRGO (August 23 to September 22) Some good news arrives -- and just in time to remind you that you're making progress. Perhaps things aren't moving as quickly as you'd prefer, but they're moving nevertheless.

LIBRA (September 23 to October 22) This is a good week to step back and assess the facts that have recently emerged to see where they can be used to your advantage. Also, don't hesitate to make changes where necessary.

SCORPIO (October 23 to November 21) You should begin to experience some support from those who now agree with your point of view. This should help counter the remaining objections from die-hard skeptics.

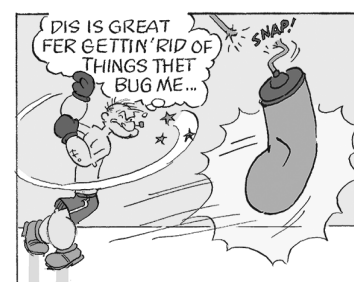
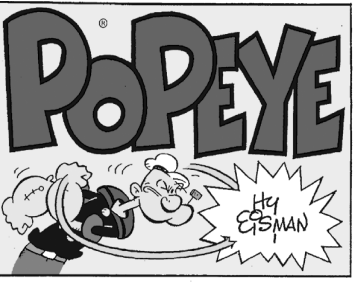
SAGITTARIUS (November 22 to December 21) Don't let your aim be deflected by trivial matters as you try to resolve a confusing situation. Take time to find and thoroughly assess the facts before making any decision.

CAPRICORN (December 22 to January 19) The possibility of moving to another location has come up. But before you dismiss it as unworkable, it's worth checking out just in case it does have some merit after all.

AQUARIUS (January 20 to February 18) New relationships -- personal or work-related -- show mixed signals. Best to assume nothing. Let things play themselves out until you have something substantive to work with.

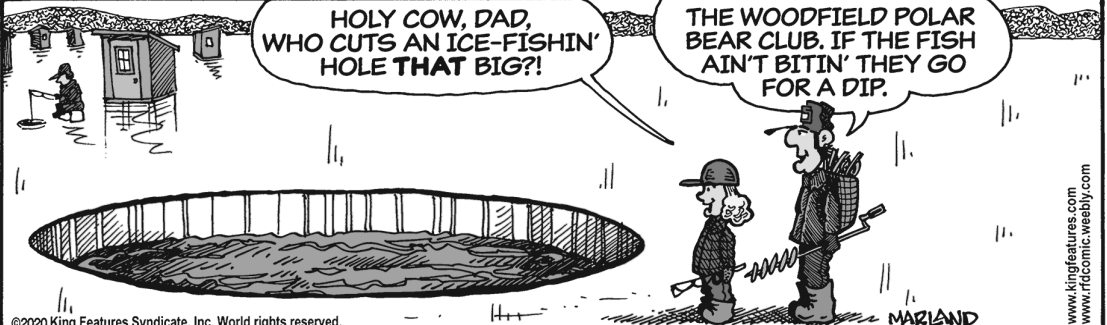
PISCES (February 19 to March 20) Your ability to make needed changes without causing too much, if any, negative ripple effect comes in handy when dealing with a sensitive matter either on the job or in the family.

BORN THIS WEEK: Although you like things to go smoothly, you're not shy about making waves when you believe the situation calls for it.



R.F.D.

by Mike Marland



Amber Waves

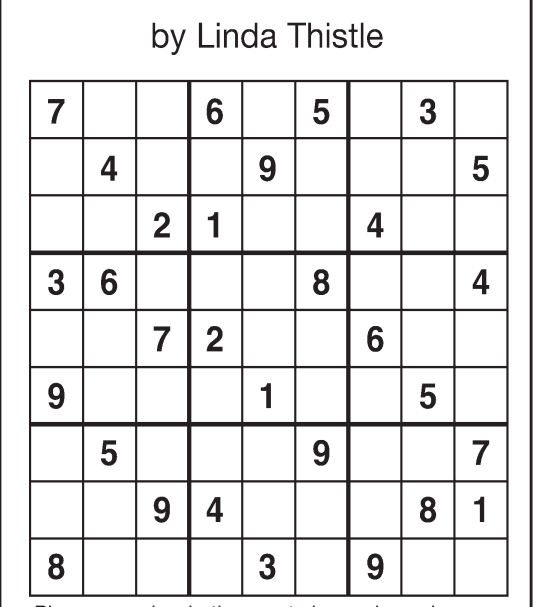


The Spats



Weekly SUDOKU

by Linda Thistle



Place a number in the empty boxes in such a way that each row across, each column down and each small 9-box square contains all of the numbers from one to nine.

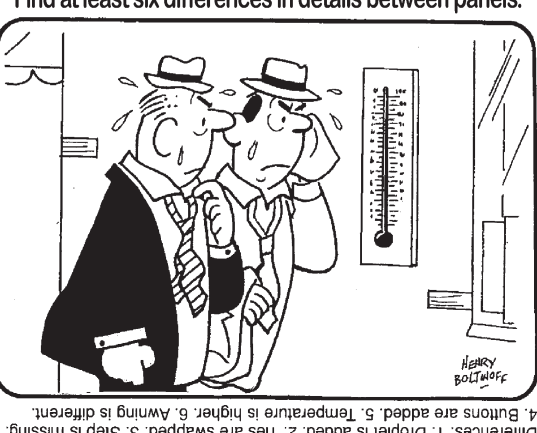
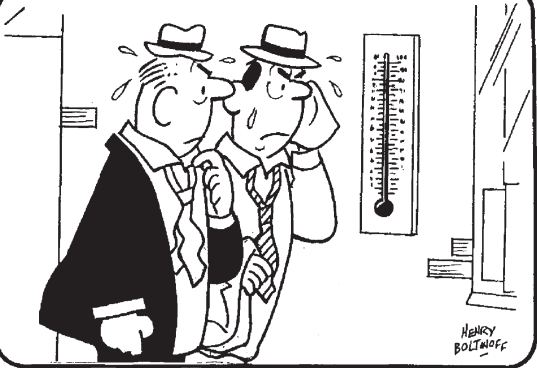
DIFFICULTY THIS WEEK: ♦♦

♦ Moderate ♦♦ Challenging
 ♦♦♦ HOO BOY!

© 2020 King Features Synd., Inc.

HOCUS-FOCUS

BY HENRY BOLTINOFF



Differences: 1. Droplet is added. 2. Ties are swapped. 3. Step is missing. 4. Buttons are added. 5. Temperature is higher. 6. A window is different.