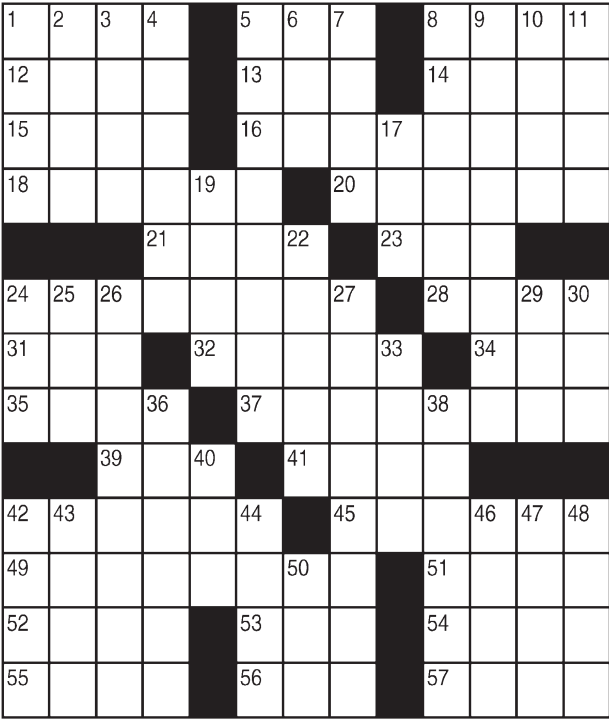


King Crossword

ACROSS

- 1 Impale
- 5 Father
- 8 Waller or Domino
- 12 Operatic solo
- 13 Playwright Levin
- 14 "Step —!" ("Hurry!")
- 15 Kindly bloke
- 16 Make a mock-up of
- 18 I before E except —
- 20 Draw forth
- 21 Doesn't feel good
- 23 Overly
- 24 Kiss
- 28 Winter forecast
- 31 Debt notice
- 32 Detroit team
- 34 Payable
- 35 Calm before the storm
- 37 Vary a tone
- 39 Winning hand's winnings
- 41 Cupola
- 42 Notlikethis
- 45 Random drawing?
- 49 Count
- 51 Require
- 52 Right angles
- 53 Knight's title



- 7 Knighted woman
- 29 Result of three strikes
- 30 Tiny
- 33 Wrestling style
- 36 Noisy swarmer
- 38 Nikita's successor
- 40 — Aviv
- 42 Branch
- 43 Wan
- 44 Morse morsel
- 46 Retro art style
- 47 Lecherous look
- 48 Vortex
- 50 Dead heat
- 54 On the rocks
- 55 Encounter
- 56 Skirt terminus
- 57 "Finding Nemo" character
- 7 Unto a dele
- 17 Last (Abbr.)
- 19 Small stream
- 22 Remained upright
- 24 Lubricant
- 25 Old French
- 26 Guilty hero
- 27 Germ layer

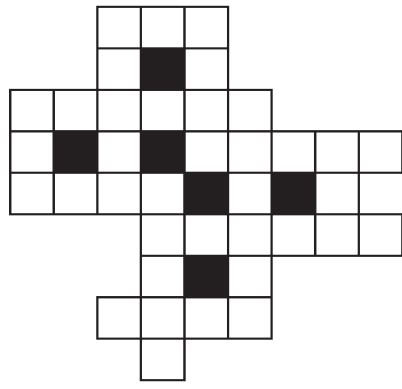
© 2020 King Features Synd., Inc.

FEAR KNOT

By: rj Johnson

DOUBT? ... OR DARE!

- ♥ DMI
- DREMP O
- ODTUB
- ♥ DUBA
- BREDOT
- PZA
- ♥ ATEM
- DILTA
- ♥ UBD
- MEDPIE
- ♥ AZBER
- LDPO

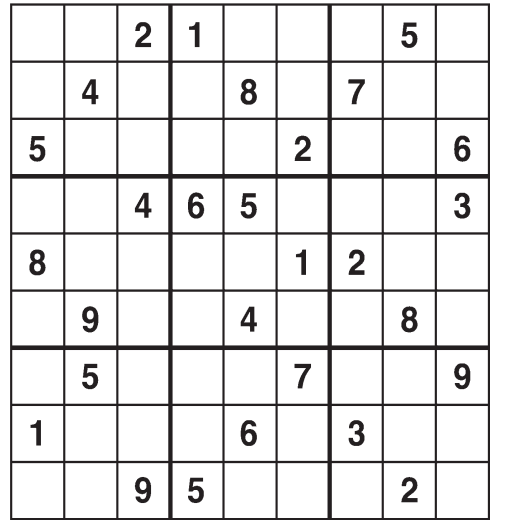


Unscramble these twelve letter strings to form each into an ordinary word (ex. HAGNEC becomes CHANGE). Prepare to use only ONE word from any marked (♥) letter string as each unscrambles into more than one word (ex. ♥ RATHER becomes HATER or EARTH or HEART). Fit each string's word either across or down to knot all twelve strings together.

© 2020 King Features Syndicate. All rights reserved.

Weekly SUDOKU

by Linda Thistle



Place a number in the empty boxes in such a way that each row across, each column down and each small 9-box square contains all of the numbers from one to nine.

DIFFICULTY THIS WEEK: ♦

- ♦ Moderate
- ♦♦ Challenging
- ♦♦♦ HOO BOY!

© 2020 King Features Synd., Inc.

Puzzles4Kids

by Helene Hovanec

RIDDLE SEARCH - FABRICS

Look up, down, and diagonally, both forward and backward to find every word on the list. Circle each one as you find it. When all the words are circled, take the UNUSED letters and write them on the blanks below. Go from left to right and top to bottom to find the answer to this riddle: What fabric would you use to make a clown outfit?

- CORDUROY
- DENIM
- FELT
- FISHNET
- FLANNEL
- LACE
- LEATHER
- LENO
- LINEN
- MESH
- MOLSKIN
- MUSLIN
- NYLON
- RAYON
- SATIN
- TWEED
- VELOUR
- VELVETEEN
- WOOL

Riddle answer: _____

© 2020 King Features Syndicate. All rights reserved.

Just Like Cats & Dogs

by Dave T. Phipps



MAGIC MAZE • WORDS NAMED FOR PEOPLE

S W T Q N K Z I F C Z W U R P
 M J H E C Z T X U S S Q N S L
 J G E G E R R Y M A N D E R B
 I C Z X V T E A N R R P N E O
 L Z J M H E H D I E U C E M Y
 A Y Z W S V W T L R B R O C
 P N L U K I I L E S E I D O O
 G E C B C Z I L X P D T W L T
 U S R H P A U G M O I L S B T
 M L J I R O J A O H S O G I A
 E D B B J A Y X W Y O V U T W

Find the listed words in the diagram. They run in all directions forward, backward, up, down and diagonally

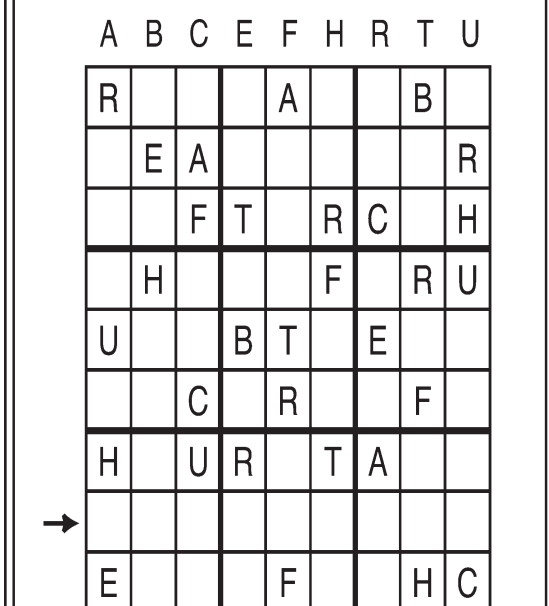
Ampere Gerrymander Ohm Watt
 Bloomers Hertz Sandwich Wisteria
 Braille Jacuzzi Sideburns Yogi-ism
 Diesel Joule Volt

© 2020 King Features Syndicate, Inc. All rights reserved.

Letter Box

by Linda Thistle

Place a letter in the empty boxes in such a way that each row across, each column down and each small 9-box square contains all of the letters listed above the diagram. When completed, the row indicated will spell out a word or words.



© 2010 King Features Synd., Inc.

Even Exchange

by Donna Pettman

Each numbered row contains two clues and two 6-letter answers. The two answers differ from each other by only one letter, which has already been inserted. For example, if you exchange the A from MASTER for an I, you get MISTER. Do not change the order of the letters.

- 1. Figaro's occupation _ _ _ _ B _ _ _ Negotiate _ _ _ _ T _ _ _
- 2. Subsequent _ _ F _ _ _ Fall bloom _ _ S _ _ _
- 3. Royal son _ _ _ I _ _ _ Cavort _ _ _ A _ _ _
- 4. King Solomon's dad _ _ _ _ _ D _ _ _ Actress Bette _ _ _ _ S _ _ _
- 5. Put into words _ _ _ _ _ Y _ _ _ U-shaped _ _ _ _ _ X _ _ _
- 6. Of high birth R _ _ _ _ _ Faithful _ _ _ L _ _ _
- 7. Identical siblings _ _ _ _ _ S _ _ _ Strong string _ _ _ _ _ E _ _ _
- 8. Awesome sight _ _ _ _ _ V _ _ _ Mime Marceau _ _ _ _ C _ _ _
- 9. Peter Pan's friend _ _ _ E _ _ _ Breezy _ _ _ I _ _ _
- 10. Quiver inside _ _ _ I _ _ _ Hair snarl _ _ _ A _ _ _

© 2020 King Features Synd., Inc.

Salome's Stars

ARIES (March 21 to April 19) Choosing to work with someone you once thought might have been disloyal is a courageous move. The logical next step is to talk things out so there'll be no reason for raising suspicions again.

TAURUS (April 20 to May 20) Take your time making a decision about a personal or work-related relationship. New facts are still coming in, and you'll want to know the full story before you take a definitive step.

GEMINI (May 21 to June 20) Expect to learn something new about an old problem. This could provide some insight into how the problem began, and why it still defies efforts to find a resolution. Good luck.

CANCER (June 21 to July 22) An uneasy work-related relationship can be eased with compromises by both sides. The parties might consider putting the agreed-upon changes in writing in case of a future misunderstanding.

LEO (July 23 to August 22) Oh, you lucky Felines: Your romantic aspects are in absolutely purrfect form. Don't be surprised at how especially attentive the ladies and gentlemen in your life are going to be this week.

VIRGO (August 23 to September 22) Looking to prove yourself in a difficult situation is laudable. But try paying more attention to advice from experienced contacts. It could help you avoid time-wasting missteps.

LIBRA (September 23 to October 22) A business decision seems easy enough to make based on what you know. But this week could bring new facts to light, and you might have to do some heavy rethinking.

SCORPIO (October 23 to November 21) Feeling sure about the steps you expect to take is great. But you may need to share a few dollops of that confidence with those who have some doubts about your plans.

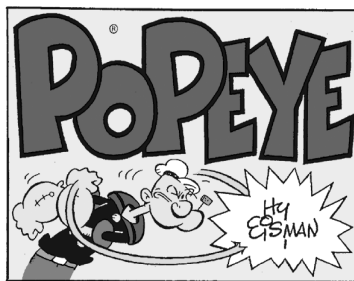
SAGITTARIUS (November 22 to December 21) A sense of well-being dominates much of the week. A slightly depressed mood could set in on the weekend. But seeing family and friends helps shoo it away.

CAPRICORN (December 22 to January 19) You appear to be walking your life's path like the sure-footed Goat you are. But someone might feel you could do better. Listen to the advice, but make up your own mind.

AQUARIUS (January 20 to February 18) With positive signs growing stronger, Aquarians could find themselves facing choices that are each too good to turn down. Best advice: Go for the one you feel most comfortable with.

PISCES (February 19 to March 20) Someone you know might need your comfort and wisdom during a particularly difficult period. Your encouraging words help restore self-confidence and rebuild strength.

BORN THIS WEEK: Your kindness to all who need you is always appreciated and sets a fine example for others to follow.



R.F.D.

by Mike Marland



Amber Waves

by Dave T. Phipps



The Spats

by Jeff Pickering

