

**Eric Baker**  
Estill County Extension  
Agent for Agriculture  
& Natural Resources

# Be aware of the Asian needle ant

the chances of a person getting stung greatly increase when the Asian needle ant moves indoors.

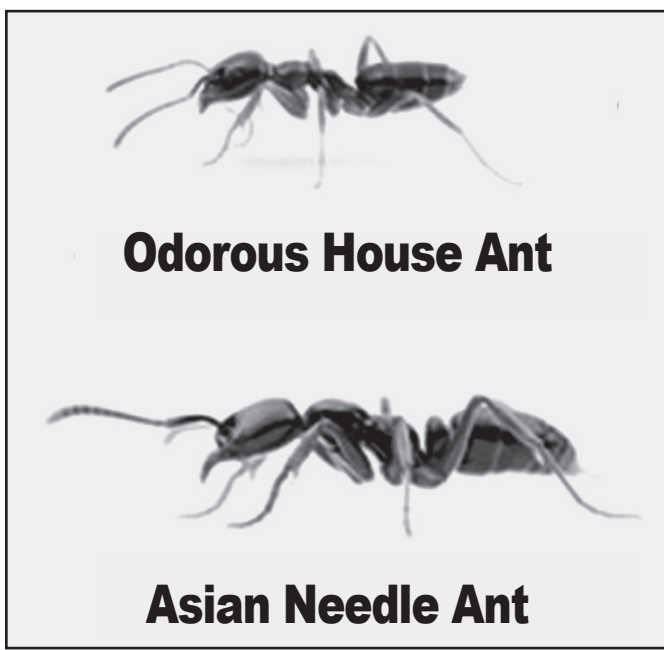
"Their sting is painful, and people report that they have a burning sensation paired with a pins-and-needles feeling for a couple of weeks after being stung," said Jonathan Larson, extension entomologist with the UK College of Agriculture, Food and Environment. "Most people do not need to seek medical treatment if they are stung by an Asian needle ant, unless they have a known allergy to other insect stings, such as from a bee or a wasp. The literature suggests that the venom from this ant may be more hazardous than bee and wasp stings."

University of Kentucky entomologists want people to be aware of a new stinging pest in the state, the Asian needle ant.

Recently, Asian needle ants invaded a home in south central Kentucky and stung the homeowner. This is one of the state's first reports of the ants coming indoors. The insect has been in Kentucky since at least 2013 and in the U.S. since the 1930s. It is found throughout the state, but tends to stay outdoors, preying on other ants and termites. Like other insects who live primarily outdoors, they are most active during warmer months with populations declining as the weather gets cooler.

Fortunately, Asian needle ants do not tend to be aggressive and only sting when they feel threatened. However,

Asian needle ants look similar to other ant species, but UK entomologists say the insect has some distinguishing features. "This ant has a large stinger at the end of its abdomen, which is usually visible to the naked eye," said Zachary DeVries, UK assistant professor of urban entomology. "The Asian needle ant is about twice as long as the odorous house ant but considerably smaller than carpenter ants."



Not much information is available on effective Asian needle ant control, but DeVries encourages people who find the ants to not panic. "Physically removing ants from the home using a vacuum cleaner will help prevent stings and provide immediate control, but given this ant's ability to deliver a nasty sting, it may be worth contacting a licensed pest control company if ants are found," he said.

If individuals discover the ants outdoors, they can use granular baits and target their nesting sites and other areas with high ant activity.

Kentuckians can make their home less appealing to ants in general by

sealing up cracks and crevices, keeping their grass mowed, eliminating standing water areas and removing dead trees from their property.

UK entomologists encourage people who think they have encountered an Asian needle ant to submit a sample to their local office of the UK Cooperative Extension Service for identification. Estill County Cooperative Extension is located at 76 Golden Court off Stacy Lane. Our telephone number is 723-4557.

Educational programs of the Cooperative Extension Service serve all people regardless of economic or social status and will not discriminate on the basis of race, color, ethnic origin, national origin, creed, religion, political belief, sex, sexual orientation, gender identity, gender expressions, pregnancy, marital status, genetic information, age, veteran status, or physical or mental disability.

## Wishing Well®

3	4	6	7	6	8	5	7	4	6	7	4	2
D	B	C	B	H	S	B	E	E	E	G	C	L
6	5	6	7	5	6	5	6	3	4	3	8	7
R	E	I	O	A	S	L	H	O	H	Y	O	O
4	6	5	7	3	7	8	2	8	7	3	6	4
O	Y	E	D	O	T	L	O	I	O	U	O	O
7	6	8	5	6	2	6	3	4	8	3	5	3
Y	U	T	R	R	V	F	R	S	U	V	T	E
2	8	3	2	6	8	7	3	2	6	4	6	7
E	D	R	O	R	E	O	Y	F	I	Y	E	U
8	7	6	3	8	2	3	6	8	2	3	6	3
I	R	N	B	S	R	E	D	O	E	S	S	T
8	2	8	2	8	7	2	7	2	7	2	7	2
K	S	A	E	Y	S	A	E	R	L	C	F	H

HERE IS A PLEASANT LITTLE GAME that will give you a message every day. It's a numerical puzzle designed to spell out your fortune. Count the letters in your first name. If the number of letters is 6 or more, subtract 4. If the number is less than 6, add 3. The result is your key number. Start at the upper left-hand corner and check one of your key numbers, left to right. Then read the message the letters under the checked figures give you.

©2020 King Features Syndicate, Inc.

## CryptoQuip

This is a simple substitution cipher in which each letter used stands for another. If you think that X equals O, it will equal O throughout the puzzle. Solution is accomplished by trial and error.

Clue: D equals O

KGT HNWFT DS CGWMQYTC GLC  
TCFLYLKTP NLHWPYI. IDE FDEYP CLI  
WK'C QDWMQ KGNDEQG KGT NDDS.

©2020 King Features Synd., Inc.

## CryptoQuote

AXYDLBAAXR  
is LONGFELLOW

One letter stands for another. In this sample, A is used for the three L's, X for the two O's, etc. Single letters, apostrophes, the length and formation of the words are all hints. Each week the code letters are different.

YT LJHOJ UL NO SGKGD  
L TOROEP YU YR TOQORRGJD  
UL FGVO GU EGRU LTO  
LUSOJ KOJRLT SGKGD.  
— USOLHLJ JOYV

©2020 King Features Synd., Inc.

# Puzzle Answers

June 17, 2020

### Puzzles4Kids

Answer

P	O	P	C	O	R	N	S	O	U	P	E
A	S	U	G	A	R	U	T	U	N	A	C
S	T	R	I	T	S	S	A	C	O	C	K
T	A	R	I	T	S	B	E	A	N	S	J
C	E	R	E	A	L	E	A	L	E	A	S
H	T	I	P	A	S	E	A	L	E	A	S
S	A	L	T	A	S	E	A	L	E	A	S
P	A	R	O	L	L	S	Y	A	M	S	A
S	A	L	T	A	S	E	A	L	E	A	S
P	A	R	O	L	L	S	Y	A	M	S	A
S	A	L	T	A	S	E	A	L	E	A	S
P	A	R	O	L	L	S	Y	A	M	S	A
S	A	L	T	A	S	E	A	L	E	A	S
P	A	R	O	L	L	S	Y	A	M	S	A
S	A	L	T	A	S	E	A	L	E	A	S
P	A	R	O	L	L	S	Y	A	M	S	A
S	A	L	T	A	S	E	A	L	E	A	S
P	A	R	O	L	L	S	Y	A	M	S	A
S	A	L	T	A	S	E	A	L	E	A	S
P	A	R	O	L	L	S	Y	A	M	S	A
S	A	L	T	A	S	E	A	L	E	A	S
P	A	R	O	L	L	S	Y	A	M	S	A
S	A	L	T	A	S	E	A	L	E	A	S
P	A	R	O	L	L	S	Y	A	M	S	A
S	A	L	T	A	S	E	A	L	E	A	S
P	A	R	O	L	L	S	Y	A	M	S	A
S	A	L	T	A	S	E	A	L	E	A	S
P	A	R	O	L	L	S	Y	A	M	S	A
S	A	L	T	A	S	E	A	L	E	A	S
P	A	R	O	L	L	S	Y	A	M	S	A
S	A	L	T	A	S	E	A	L	E	A	S
P	A	R	O	L	L	S	Y	A	M	S	A
S	A	L	T	A	S	E	A	L	E	A	S
P	A	R	O	L	L	S	Y	A	M	S	A
S	A	L	T	A	S	E	A	L	E	A	S
P	A	R	O	L	L	S	Y	A	M	S	A
S	A	L	T	A	S	E	A	L	E	A	S
P	A	R	O	L	L	S	Y	A	M	S	A
S	A	L	T	A	S	E	A	L	E	A	S
P	A	R	O	L	L	S	Y	A	M	S	A
S	A	L	T	A	S	E	A	L	E	A	S
P	A	R	O	L	L	S	Y	A	M	S	A
S	A	L	T	A	S	E	A	L	E	A	S
P	A	R	O	L	L	S	Y	A	M	S	A
S	A	L	T	A	S	E	A	L	E	A	S
P	A	R	O	L	L	S	Y	A	M	S	A
S	A	L	T	A	S	E	A	L	E	A	S
P	A	R	O	L	L	S	Y	A	M	S	A
S	A	L	T	A	S	E	A	L	E	A	S
P	A	R	O	L	L	S	Y	A	M	S	A
S	A	L	T	A	S	E	A	L	E	A	S
P	A	R	O	L	L	S	Y	A	M	S	A
S	A	L	T	A	S	E	A	L	E	A	S
P	A	R	O	L	L	S	Y	A	M	S	A
S	A	L	T	A	S	E	A	L	E	A	S
P	A	R	O	L	L	S	Y	A	M	S	A
S	A	L	T	A	S	E	A	L	E	A	S
P	A	R	O	L	L	S	Y	A	M	S	A
S	A	L	T	A	S	E	A	L	E	A	S
P	A	R	O	L	L	S	Y	A	M	S	A
S	A	L	T	A	S	E	A	L	E	A	S
P	A	R	O	L	L	S	Y	A	M	S	A
S	A	L	T	A	S	E	A	L	E	A	S
P	A	R	O	L	L	S	Y	A	M	S	A
S	A	L	T	A	S	E	A	L	E	A	S
P	A	R	O	L	L	S	Y	A	M	S	A
S	A	L	T	A	S	E	A	L	E	A	S
P	A	R	O	L	L	S	Y	A	M	S	A
S	A	L	T	A	S	E	A	L	E	A	S
P	A	R	O	L	L	S	Y	A	M	S	A
S	A	L	T	A	S	E	A	L	E	A	S
P	A	R	O	L	L	S	Y	A	M	S	A
S	A	L	T	A	S	E	A	L	E	A	S
P	A	R	O	L	L	S	Y	A	M	S	A
S	A	L	T	A	S	E	A	L	E	A	S
P	A	R	O	L	L	S	Y	A	M	S	A
S	A	L	T	A	S	E	A	L	E	A	S
P	A	R	O	L	L	S	Y	A	M	S	A
S	A	L	T	A	S	E	A	L	E	A	S
P	A	R	O	L	L	S	Y	A	M	S	A
S	A	L	T	A	S	E	A	L	E	A	S
P	A	R	O	L	L	S	Y	A	M	S	A
S	A	L	T	A	S	E	A	L	E	A	S
P	A	R	O	L	L	S	Y	A	M	S	A
S	A	L	T	A	S	E	A	L	E	A	S
P	A	R	O	L	L	S	Y	A	M	S	A
S	A	L	T	A	S	E	A	L	E	A	S
P	A	R	O	L	L	S	Y	A	M	S	A
S	A	L	T	A	S	E	A	L	E	A	S
P	A	R	O	L	L	S	Y	A	M	S	A
S	A	L	T	A	S	E	A	L	E	A	S
P	A	R	O	L	L	S	Y	A	M	S	A
S	A	L	T	A	S	E	A	L	E	A	S
P	A	R	O	L	L	S	Y	A	M	S	A
S	A	L	T	A	S	E	A	L	E	A	S
P	A	R	O	L	L	S	Y	A	M	S	A
S	A	L	T	A	S	E	A	L	E	A	S
P	A	R	O	L	L	S	Y	A	M	S	A
S	A	L	T	A	S	E	A	L	E	A	S
P	A	R	O	L	L	S	Y	A	M	S	A
S	A	L	T	A	S	E	A	L	E	A	S
P	A	R	O	L	L	S	Y	A	M	S	A
S	A	L	T	A	S	E	A	L	E	A	S
P	A	R	O	L	L	S	Y	A	M	S	A
S	A	L	T	A	S	E	A	L	E	A	S
P	A	R	O	L	L	S	Y	A	M	S	A
S	A	L	T	A	S	E	A	L	E	A	S
P	A	R	O	L	L	S	Y	A	M	S	A
S	A	L	T	A	S	E	A	L	E	A	S
P	A	R	O	L	L	S	Y	A	M	S	A
S	A	L	T	A	S	E	A	L	E	A	S
P	A	R	O	L	L	S	Y	A	M	S	A
S	A	L	T	A	S	E	A	L	E	A	S
P	A	R	O	L	L	S	Y	A	M	S	A
S	A	L	T	A	S	E	A	L	E	A	S
P	A	R	O	L	L	S	Y	A	M	S	A
S	A	L	T	A	S	E	A	L	E	A	S
P	A	R	O	L	L	S	Y	A	M	S	A
S	A	L	T	A	S	E	A	L	E	A	S
P	A	R	O	L	L	S	Y	A	M	S	A
S	A	L	T	A	S	E	A	L	E	A	S
P	A	R	O	L	L	S	Y	A	M	S	A
S	A	L	T	A	S	E	A	L	E	A	S
P	A	R	O	L	L	S	Y	A	M	S	A
S	A	L	T	A	S	E	A	L	E	A	S
P	A	R	O	L	L	S	Y	A	M	S	A
S	A	L	T	A	S	E	A	L	E	A	S
P	A	R	O	L	L	S	Y	A	M	S	A
S	A	L	T	A	S	E	A	L	E	A	S
P	A	R	O	L	L	S	Y	A	M	S	A
S	A	L	T	A	S	E	A	L	E	A	S
P	A	R	O	L	L	S	Y	A	M	S	A
S	A	L	T	A	S	E	A	L	E	A	S
P	A	R	O	L	L	S	Y	A	M	S	A
S	A	L	T	A	S	E	A	L	E	A	S
P	A	R	O	L	L	S	Y	A	M	S	A
S											