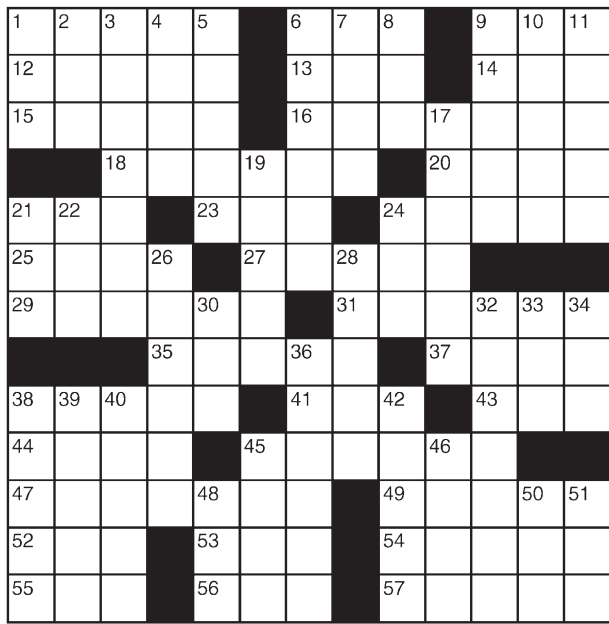


# King Crossword

**ACROSS**

- 1 Colorado ski mecca
- 6 Aries
- 9 Bookkeeper (Abbr.)
- 12 Camel's cousin
- 13 "The Greatest"
- 14 Chance
- 15 Hammerstein's contribution
- 16 Decorative floor
- 18 Knapsack parts
- 20 Kazakhstan river
- 21 Buddhist sect
- 23 Lamb's dam
- 24 Minimal change
- 25 Writer Kingsley
- 27 Rice, on a Mexican menu
- 29 Minnesotan
- 31 Fled to wed
- 35 Heat
- 37 Appellation
- 38 Miss USA adornment
- 41 Neighbor of Ukr.
- 43 Abrade
- 44 Con
- 45 Oft-repeated word
- 47 Layered dessert
- 49 Carnival



- 23 attractions
- 24 station
- 25 contradiction
- 26 Flightless bird
- 27 Society newcomer
- 28 Demos-thenes, for one
- 29 Spanish appetizers
- 30 Foolish
- 31 Places in the heart
- 32 Malt shop item
- 33 Actress Sorvino
- 34 Latvia's capital
- 35 Gorilla
- 36 Prior to
- 37 Blue
- 38 Blackbird
- 39 Make butter
- 40 Song of joy
- 41 As deemed fit
- 42 — City (former Philippine capital)
- 43 Trophy, for one
- 44 Sharp turn
- 45 Comedian Philips
- 46 D.C. type "Doctor Zhivago" star
- 47 Same old story?
- 48 Detergent brand
- 49 Baffling

**DOWN**

- 1 Every iota
- 2 Crafty
- 3 Carrot's cousin
- 4 Send forth
- 5 Mother-of-pearl
- 6 50 Cent, e.g.
- 7 "Sad to say..."
- 8 Bygone space

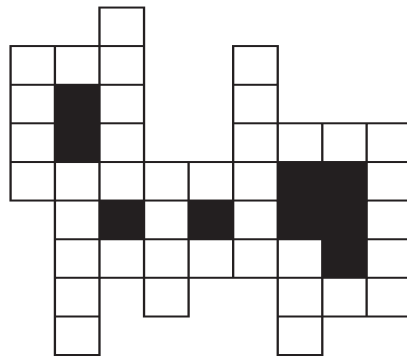
© 2015 King Features Synd., Inc.

# FEAR KNOT

By: rj johnson

DOUBT? ... OR DARE!

- LEL
- DUTPIN
- ♥ TAXLE
- LEPT
- ♥ RIDPOT
- TLE
- ♥ ILNA
- LENDO
- LXU
- ♥ AIDELT
- ♥ RHOTE
- TILN



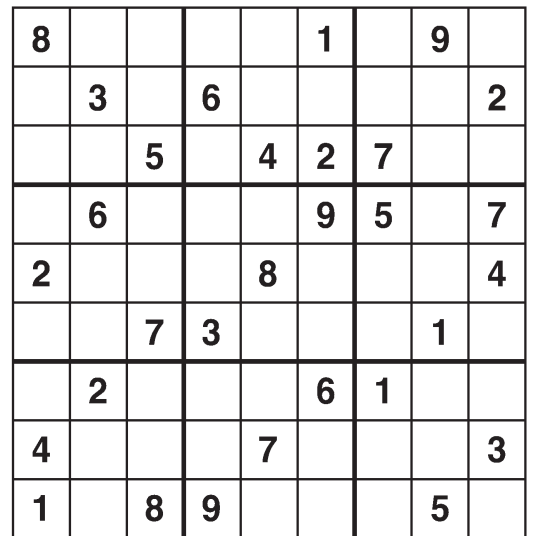
Unscramble these twelve letter strings to form each into an ordinary word (ex. HAGNEC becomes CHANGE). Prepare to use only ONE word from any marked (♥) letter string as each unscrambles into more than one word (ex. ♥RATHE becomes HATER or EARTH or HEART). Fit each string's word either across or down to knot all twelve strings together.

NEW! 30 Fear Knot puzzles \$3.50 • Six Volumes • Order at rbmamall.com

© 2015 King Features Syndicate, Inc. All rights reserved.

# Weekly SUDOKU

by Linda Thistle



Place a number in the empty boxes in such a way that each row across, each column down and each small 9-box square contains all of the numbers from one to nine.

**DIFFICULTY THIS WEEK: ★**

★ Moderate ★★ Challenging  
★★★ HOO BOY!

© 2015 King Features Synd., Inc.

# Puzzles4Kids

by Helene Hovanec

## WORD FUN

Study the two words on each line to find the ONE letter in the left column that is NOT in the word in the right column. Write the extra letter on the blank space. Then read DOWN to answer this riddle:

**WHY DIDN'T THE TURKEY EAT DESSERT?**

- |        |     |       |        |     |       |
|--------|-----|-------|--------|-----|-------|
| THRIVE | ___ | RIVET | SPARSE | ___ | PARES |
| SELFIE | ___ | FLIES | TESTER | ___ | TERSE |
| ARROWS | ___ | ROARS | INSURE | ___ | RESIN |
| AUSTIN | ___ | UNITS | FRANCE | ___ | CRANE |
| CATERS | ___ | REACT | STRIFE | ___ | TIER  |
|        |     |       | KENDRA | ___ | DRANK |
|        |     |       | OLDEST | ___ | STOLE |

For more puzzle fun, go to [www.brainzles.com](http://www.brainzles.com)

# Just Like Cats & Dogs

by Dave T. Phipps



## MAGIC MAZE • GIRLS ONLY

WNJGDZWSSTQNKHDA  
 XURSPM(SOPRANO)JG  
 DAXVSESSXEQNKIF  
 DAXVCETIQTOMJHF  
 CAYNWSRSUHRPNLJ  
 HFIDETSTAGBYZXR  
 VRTRAEQEIUDOMEK  
 PIOIRHURDANFHDB  
 ZYVTWVTQLDWRQO  
 NACLLKIENIOREHS  
 NAMOWAHFDMCGAZX

Find the listed words in the diagram. They run in all directions forward, backward, up, down and diagonally

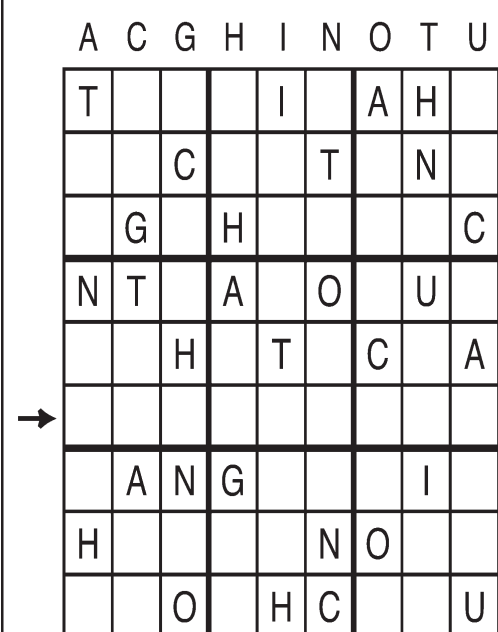
- |          |         |          |          |
|----------|---------|----------|----------|
| Actress  | Goddess | Princess | Soprano  |
| Alto     | Heroine | Queen    | Waitress |
| Aunt     | Lady    | She      | Woman    |
| Daughter | Mother  | Sister   |          |

© 2015 King Features Syndicate, Inc. All rights reserved.

# Letter Box

by Linda Thistle

Place a letter in the empty boxes in such a way that each row across, each column down and each small 9-box square contains all of the letters listed above the diagram. When completed, the row indicated will spell out a word or words.



© 2011 King Features Synd., Inc.

# Even Exchange

by Donna Pettman

Each numbered row contains two clues and two 6-letter answers. The two answers differ from each other by only one letter, which has already been inserted. For example, if you exchange the A from MASTER for an I, you get MISTER. Do not change the order of the letters.

- |                           |           |                       |           |
|---------------------------|-----------|-----------------------|-----------|
| 1. Mockup                 | ___ A ___ | Easy                  | ___ I ___ |
| 2. Serve food for a party | C ___     | Thirst quencher       | W ___     |
| 3. "Loves me" blossom     | ___ S     | Every 24 hours        | ___ L     |
| 4. Negotiate a trade      | ___ T     | Hairdresser for gents | ___ B     |
| 5. Highly skilled one     | ___ R     | Anticipate            | ___ C     |
| 6. Cake maker             | ___ A     | Motorcyclist          | ___ I     |
| 7. Smallest amount        | ___ T     | Dog restraint         | ___ H     |
| 8. Talk turkey            | G ___     | Sway unsteadily       | W ___     |
| 9. Wine decanter          | ___ E     | Bread layer           | ___ S     |
| 10. Portugal capital      | ___ B     | Boxer Sonny           | ___ T     |

# Salome's Stars

**ARIES** (March 21 to April 19) This year, instead of jumping into the whole holiday prep scene, move in a little at a time. You'll appreciate the sense of control you're more likely to enjoy.

**TAURUS** (April 20 to May 20) The separation between the Bovine's head and heart is never as far apart as it seems. Both senses work best when they come out of logic and honesty.

**GEMINI** (May 21 to June 20) The best way to keep those pre-holiday pressures under control is to just say no to taking on new tasks while you're still trying to work with a heap of others.

**CANCER** (June 21 to July 22) News means a change might be on its way, but what does it hold? Don't just ask questions; make sure you get answers you can trust.

**LEO** (July 23 to August 22) Old friends and new have one thing in common: Both your long-time and newly minted pals have much wisdom to impart.

**VIRGO** (August 23 to September 22) With time running out, this is a good time for you to show 'em all what those Virgo super-organizational skills can do.

**LIBRA** (September 23 to October 22) Librans and holidays are made for each other, especially if children and animals are going to be part of your joyous season.

**SCORPIO** (October 23 to November 21) Time is getting too short to allow a spat to taint the holiday season. Restart your relationship and reschedule holiday fun times.

**SAGITTARIUS** (November 22 to December 21) Seeking advice is laudable. You might learn far more than you thought you could. Stay with it.

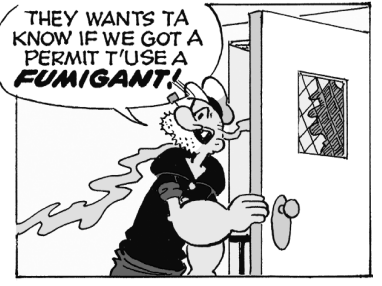
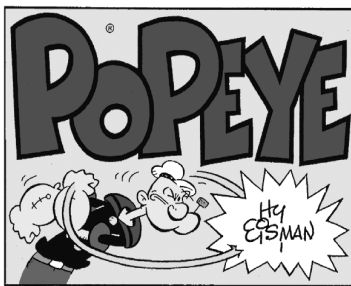
**CAPRICORN** (December 22 to January 19) Continuing to assess changes works toward your getting your new project up and ready. Trusted colleagues remain ready to help.

**AQUARIUS** (January 20 to February 18) That new situation needs a lot of attention, but it's worth it. This is a very good time for you to involve the arts in what you do.

**PISCES** (February 19 to March 20) It might be a good idea to slow your hectic holiday pace so that you don't rush past what — or who — you're hoping to rush toward.

**BORN THIS WEEK:** Others pick up on your confidence in yourself, which inspires them to believe in you and your special gifts.

© 2015 King Features Syndicate Inc.



R.F.D.

by Mike Marland



# Amber Waves

by Dave T. Phipps



The Spats

by Jeff Pickering

