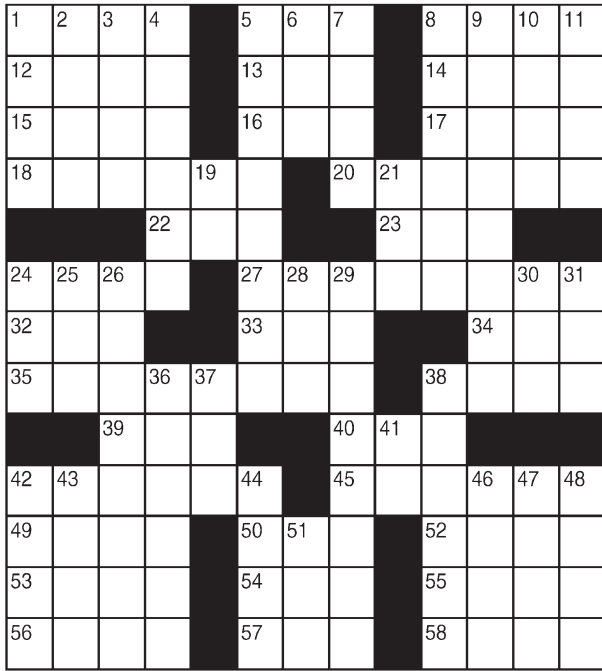


King Crossword

ACROSS

- 1 Opposed
- 5 "Humbug!"
- 8 Duel tool
- 12 Leeway
- 13 — out a living
- 14 Ointment-yielding plant
- 15 Handle
- 16 Paving material
- 17 Puzzle diagram
- 18 Elder
- 20 Le Carre hero George
- 22 Support system?
- 23 Literary collection
- 24 Disappear gradually
- 27 "Close — and I'll kiss you ..."
- 32 Greek X
- 33 Sea eagle
- 34 Geologic period
- 35 Waterfalls
- 38 Nervous
- 39 — de mer
- 40 Victory
- 42 Powerless
- 45 Have an impact on
- 49 Protein bean



- 50 Parched
 - 52 Norway's capital
 - 53 Tied
 - 54 Favorable vote
 - 55 Den
 - 56 Arp's genre
 - 57 Club —
 - 58 Cat's-paw
- DOWN**
- 1 Clumsy boats
 - 2 Zilch
 - 3 Animated character
 - 4 Drink
 - 5 Sold out
 - 6 Alias abbr.
 - 7 His and —
 - 8 Motor
 - 9 Exploited successfully
 - 10 Pennsylvania port
 - 11 Vortex
 - 19 On the other hand
 - 21 Scratch
 - 24 TV watch-dog org.
 - 25 "Eureka!"
 - 26 Unnerved
 - 28 Raw rock
 - 29 Still in need of convincing
 - 30 Work unit
 - 31 Put into words
 - 36 Poolside structure
 - 37 The whole enchilada
 - 38 Hug
 - 41 Kipling poem
 - 42 Worked with
 - 43 PBS science show
 - 44 Cheese choice
 - 46 Birthright barterer
 - 47 Film sample
 - 48 Rent
 - 51 Deli loaf

© 2015 King Features Synd., Inc.

FEAR KNOT

By: rj Johnson

DOUBT? ... OR DARE!

NEF
DATIER
REDNI
♥ELFI
COTEAL
♥RAF
THAC
DAILT
♥TFA
♥DYFALE
ERLEC
OLDA

Unscramble these twelve letter strings to form each into an ordinary word (ex. HAGNEC becomes CHANGE). Prepare to use only ONE word from any marked (♥) letter string as each unscrambles into more than one word (ex. ♥RATHE becomes HATER or EARTH or HEART). Fit each string's word either across or down to knot all twelve strings together.

NEW! 30 Fear Knot puzzles \$3.50 • Six Volumes • Order at rbmamall.com

Puzzles4Kids

by Helene Hovanec

CODED RIDDLE

Change each letter to the one that comes immediately BEFORE it in the alphabet to find a riddle and its answer.

Here's a copy of the alphabet to guide you:

A B C D E F G H I J K L M N O P Q R S T U V W X Y Z

XIBU EJSFDUJ POT EJE UIF HIPTU

HJWF UP UIF HPCMJO? NBLF B GSJHIU

UVSO BU UIF DPSOFS.

For more puzzle fun, go to www.brainzles.com

Just Like Cats & Dogs

by Dave T. Phipps



MAGIC MAZE • NAVIGATION

U Q O L H I G G D B Y W T R D
P M K I S T T N A T X E S F A
D B Y N E E U R I W U R S N E
Q O M K O D T M A R I E F O D
D G B Z X C U I I H A T W I U
U P N S Q O A T L Z C E O T T
N S L I J M H E I L A M B I I
F D C A D P Y W B T E I V S G
T S T R I A N G U L A T I O N
Q P N L K S E I H F E L A P O
C B Z Y W S V H R A D A R S L

Find the listed words in the diagram. They run in all directions forward, backward, up, down and diagonally

- | | | | |
|-----------|---------|-----------|---------------|
| Altimeter | Chart | Latitude | Satellites |
| Azimuth | Compass | Longitude | Sextant |
| Beacon | GPS | Position | Triangulation |
| Bearing | Heading | Radar | |

© 2015 King Features Syndicate, Inc. All rights reserved.

Letter Box

by Linda Thistle

Place a letter in the empty boxes in such a way that each row across, each column down and each small 9-box square contains all of the letters listed above the diagram. When completed, the row indicated will spell out a word or words.



© 2011 King Features Synd., Inc.

Even Exchange

by Donna Pettman

Each numbered row contains two clues and two 6-letter answers. The two answers differ from each other by only one letter, which has already been inserted. For example, if you exchange the A from MASTER for an I, you get MISTER. Do not change the order of the letters.

- | | | | |
|------------------------|---------|---------------------|---------|
| 1. Green Bay athlete | _____ R | Small bundle | _____ T |
| 2. IRS investigation | _____ T | Acoustic | _____ O |
| 3. Reddish-brown metal | _____ P | James Fenimore | _____ O |
| 4. Toast topper | _____ E | Good-humored | _____ O |
| 5. Coastline | _____ R | Push | _____ V |
| 6. Autumn chore | _____ K | Angry, like a bull | _____ G |
| 7. Dawdle | _____ R | Late for school | _____ D |
| 8. Calendar division | _____ N | Talk back | _____ U |
| 9. Gun barrel | M _____ | Jigsaw or crossword | P _____ |
| 10. Might | _____ O | Satirical comedy | _____ A |

Salome's Stars

ARIES (March 21 to April 19) Your ruling planet, Mars, allows you to assume a sense of command that can help you turn a chaotic workplace situation into one that's orderly, productive and, yes, even friendly.

TAURUS (April 20 to May 20) Getting a relationship that's been stuck in a rut up and running again depends on how far you want to run with it. Be honest with yourself as you consider which decision to make.

GEMINI (May 21 to June 20) Be wary of rumors that seem to be coming from everywhere this week. Waiting for the facts before you act means never having to say you're sorry you followed the wrong lead.

CANCER (June 21 to July 22) A difficult personal matter might prompt you to turn to a trusted friend to help you sort through a maze of emotional conflicts. The weekend should bring some welcome news.

LEO (July 23 to August 22) Some of the new people coming into the Lion's life could play pivotal roles in future personal and professional matters. Meanwhile, an old friend might have an important message.

VIRGO (August 23 to September 22) A delay in getting things moving on schedule can be a blessing in disguise. Use this extra time to do more research so you can buttress any of the weaker points with solid facts.

LIBRA (September 23 to October 22) You might need to get involved in a personal matter before it becomes a serious problem. Also, be wary of someone offering to mediate, unless you can be sure of his or her motives.

SCORPIO (October 23 to November 21) Taking sides in a workplace or domestic dispute could prolong the problem. Stay out and stay cool. Then you can be friends with both parties when things settle down.

SAGITTARIUS (November 22 to December 21) A friendship has the potential to become something more, and with this week's suspects favoring romance, you might feel that this possibility is worth exploring.

CAPRICORN (December 22 to January 19) The new job you want might require you to relocate. If so, keep an open mind and weigh all the positives and negatives before making your decision.

AQUARIUS (January 20 to February 18) A new relationship seems to be everything you could have hoped for. Congratulations. Meanwhile, it's not too early to get some feedback on that new project you're working on.

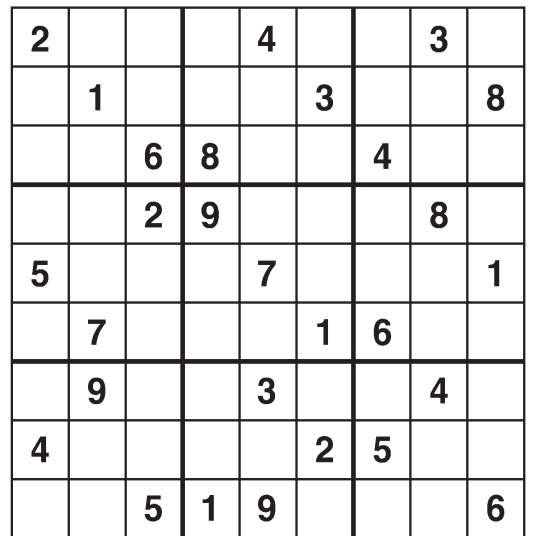
PISCES (February 19 to March 20) You might have decided to get out of the fast-moving current and just float around higher and yon for a while. But you might find that the new opportunity is too tempting to turn down.

BORN THIS WEEK: You believe in bringing out the best in people with kind deeds, loving words and recognition of their "special" selves.

© 2015 King Features Syndicate Inc.

Weekly SUDOKU

by Linda Thistle



Place a number in the empty boxes in such a way that each row across, each column down and each small 9-box square contains all of the numbers from one to nine.

DIFFICULTY THIS WEEK: ★★

★ Moderate ★★ Challenging
★★★ HOO BOY!

© 2015 King Features Synd., Inc.

HOCUS-FOCUS

BY HENRY BOLTINOFF

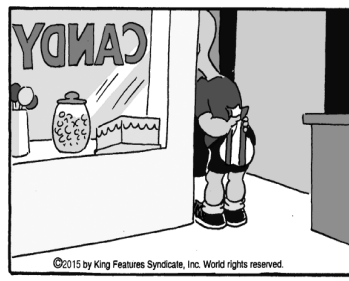
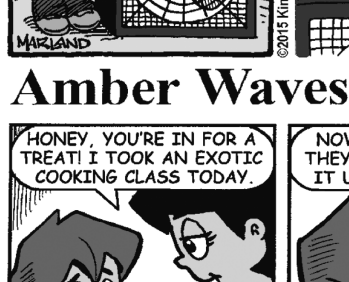
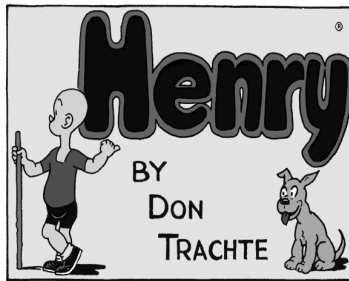


Find at least six differences in details between panels.



Differences: 1. Sign is missing. 2. Backpack compartment is missing. 3. Shirt is shorter. 4. Cap is different. 5. Can is missing. 6. Hot dog is missing. 7. Hot dog is missing. 8. Hot dog is missing. 9. Hot dog is missing. 10. Hot dog is missing. 11. Hot dog is missing. 12. Hot dog is missing. 13. Hot dog is missing. 14. Hot dog is missing. 15. Hot dog is missing. 16. Hot dog is missing. 17. Hot dog is missing. 18. Hot dog is missing. 19. Hot dog is missing. 20. Hot dog is missing. 21. Hot dog is missing. 22. Hot dog is missing. 23. Hot dog is missing. 24. Hot dog is missing. 25. Hot dog is missing. 26. Hot dog is missing. 27. Hot dog is missing. 28. Hot dog is missing. 29. Hot dog is missing. 30. Hot dog is missing. 31. Hot dog is missing. 32. Hot dog is missing. 33. Hot dog is missing. 34. Hot dog is missing. 35. Hot dog is missing. 36. Hot dog is missing. 37. Hot dog is missing. 38. Hot dog is missing. 39. Hot dog is missing. 40. Hot dog is missing. 41. Hot dog is missing. 42. Hot dog is missing. 43. Hot dog is missing. 44. Hot dog is missing. 45. Hot dog is missing. 46. Hot dog is missing. 47. Hot dog is missing. 48. Hot dog is missing. 49. Hot dog is missing. 50. Hot dog is missing. 51. Hot dog is missing. 52. Hot dog is missing. 53. Hot dog is missing. 54. Hot dog is missing. 55. Hot dog is missing. 56. Hot dog is missing. 57. Hot dog is missing. 58. Hot dog is missing. 59. Hot dog is missing. 60. Hot dog is missing. 61. Hot dog is missing. 62. Hot dog is missing. 63. Hot dog is missing. 64. Hot dog is missing. 65. Hot dog is missing. 66. Hot dog is missing. 67. Hot dog is missing. 68. Hot dog is missing. 69. Hot dog is missing. 70. Hot dog is missing. 71. Hot dog is missing. 72. Hot dog is missing. 73. Hot dog is missing. 74. Hot dog is missing. 75. Hot dog is missing. 76. Hot dog is missing. 77. Hot dog is missing. 78. Hot dog is missing. 79. Hot dog is missing. 80. Hot dog is missing. 81. Hot dog is missing. 82. Hot dog is missing. 83. Hot dog is missing. 84. Hot dog is missing. 85. Hot dog is missing. 86. Hot dog is missing. 87. Hot dog is missing. 88. Hot dog is missing. 89. Hot dog is missing. 90. Hot dog is missing. 91. Hot dog is missing. 92. Hot dog is missing. 93. Hot dog is missing. 94. Hot dog is missing. 95. Hot dog is missing. 96. Hot dog is missing. 97. Hot dog is missing. 98. Hot dog is missing. 99. Hot dog is missing. 100. Hot dog is missing.

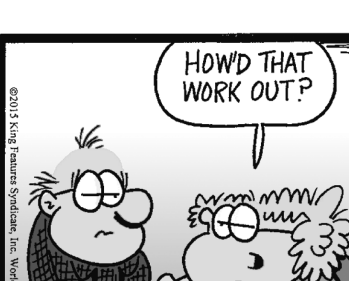
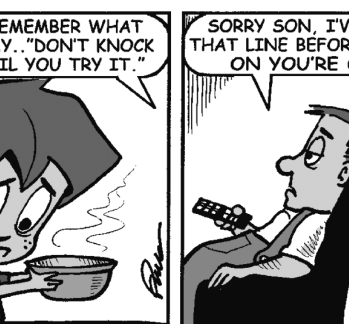
Find Puzzles Galore! • Order at: rbmamall.com or Call: (800) 708-7311 x250



Amber Waves



The Spats



by Dave T. Phipps



by Jeff Pickering

