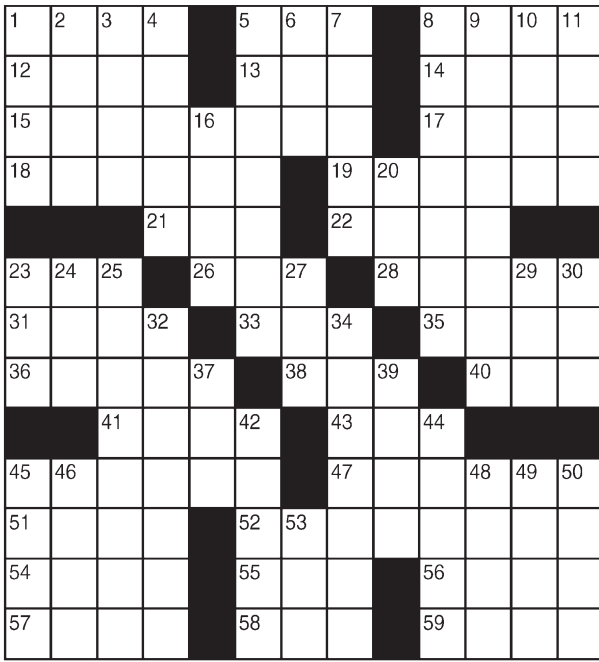


King Crossword

ACROSS

- 1 Too
- 5 Legislation
- 8 Use scissors
- 12 Picnic hamperer
- 13 Raw rock
- 14 Mexican entree
- 15 Water
- 17 Microwave
- 18 Classify
- 19 Mock
- 21 Med. research org.
- 22 Unescorted
- 23 \$ dispenser
- 26 Calendar abbr.
- 28 Once more
- 31 Child of the streets
- 33 Name
- 35 Sicilian spouter
- 36 Praise highly
- 38 Conger or moray
- 40 Early bird?
- 41 Eye part
- 43 Deteriorate
- 45 Official emissary
- 47 Puts on a pedestal
- 51 Vacating
- 52 Go to court
- 54 Apportion (out)



- 55 One of the Stooges
 - 56 Chills and fever
 - 57 Raised
 - 58 Moreover
 - 59 Put into words
- DOWN**
- 1 Met melody
 - 2 Rock drummer Ulrich
 - 3 Letter starter of yore
 - 4 Whopper topper
 - 5 Couldn't stand
 - 6 Illustrations
 - 7 Mary-Louise Parker series on Showtime
 - 8 Warehouse's purpose
 - 9 Steer
 - 10 On the rocks
 - 11 Corn recipe
 - 16 Puzzle diagram
 - 20 Greek H
 - 23 Shock and —
 - 24 Tariff
 - 25 Ease
 - 27 Prompt
 - 29 Gerund
 - 30 Complain constantly
 - 32 Made an incursion
 - 34 Scolded
 - 37 Eng. class
 - 39 California city
 - 42 Alabama city
 - 44 Frat party garb
 - 45 Mary's follower
 - 46 Basin accessory
 - 48 Indian style of music
 - 49 Needle case
 - 50 Origin
 - 53 Electrical particle

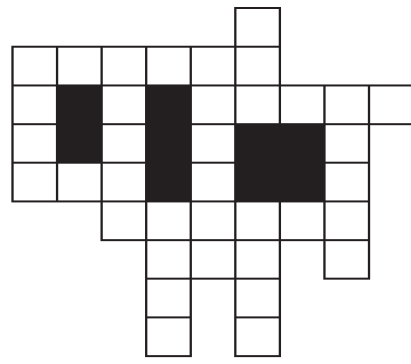
© 2015 King Features Synd., Inc.

FEAR KNOT

By: rj johnson

DOUBT? ...OR DARE!

- ENH
- GEITNA
- ▼ FIDEY
- FOIN
- ▼ DRINFE
- ▼ RTA
- YAOH
- GNIFE
- DOD
- GANTEE
- ETRIA
- UFRO



Unscramble these twelve letter strings to form each into an ordinary word (ex. HAGNEC becomes CHANGE). Prepare to use only ONE word from any marked (♥) letter string as each unscrambles into more than one word (ex. ♥RATHE becomes HATER or EARTH or HEART). Fit each string's word either across or down to knot all twelve strings together.

NEW! 30 Fear Knot puzzles \$3.50 • Six Volumes • Order at rbmall.com

Puzzles4Kids

by Helene Hovanec

WORD FUN

Study the two words on each line to find the ONE letter in the left column that is NOT in the word in the right column. Write the extra letter on the blank space. Then read DOWN to answer this riddle:

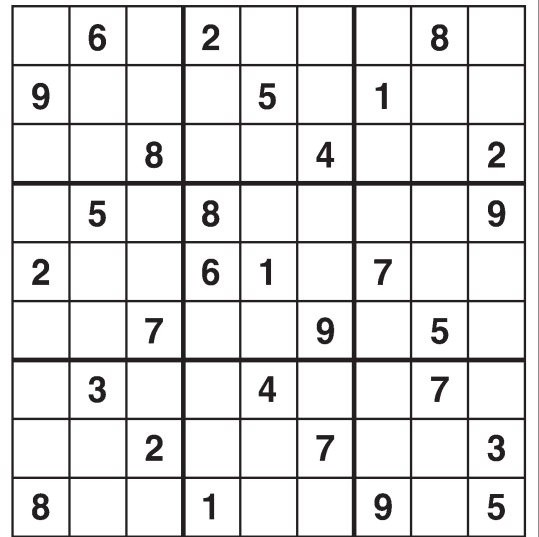
WHAT IS A SKUNK'S FAVORITE HOLIDAY SONG?

- | | | | | | |
|--------|---|-------|--------|---|-------|
| JASPER | — | PEARS | SLOWED | — | DOWEL |
| SHEILA | — | LEASH | STREAM | — | TEARS |
| TEXANS | — | TAXES | PHRASE | — | SHARP |
| GORDON | — | DONOR | ALMOST | — | MOATS |
| VERBAL | — | BRAVE | FILLED | — | FIELD |
| ENVIES | — | VINES | SCALED | — | DECAL |

For more puzzle fun, go to www.brainzles.com

Weekly SUDOKU

by Linda Thistle



Place a number in the empty boxes in such a way that each row across, each column down and each small 9-box square contains all of the numbers from one to nine.

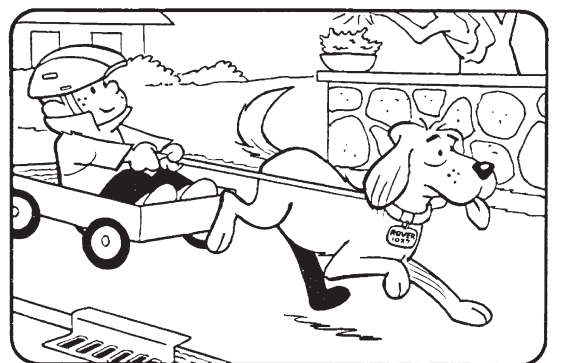
DIFFICULTY THIS WEEK: ★★★

★ Moderate ★★ Challenging
★★★ HOO BOY!

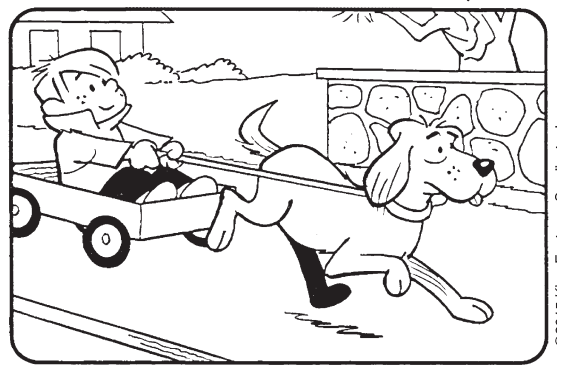
© 2015 King Features Synd., Inc.

HOCUS-FOCUS

BY HENRY BOLTINOFF



Find at least six differences in details between panels.



Differences: 1. Helmet is missing; 2. Drain is shorter; 3. Tail is smaller; 4. Flower pot is missing; 5. License tag is missing; 6. Drain is shorter; 7. Tail is shorter; 8. Flower pot is missing; 9. License tag is missing; 10. Tail is smaller.

NEW! 24 HOCUS FOCUS puzzles \$3.50 • 24 Volumes • Order at: rbmall.com

Just Like Cats & Dogs

by Dave T. Phipps



MAGIC MAZE ● HOW LOW CAN YOU GO?

RRNJFCYUQNJFCYV
 ROLHEBXUROLIEBY
 VSQNKHEBYWTROLJ
 GEBYWURPNKIGDBZ
 XWVWVHWWWFSQOMK
 IGOEOOOOAOCAWU
 SLQLLLLLLSLPNLJ
 FHFELLLLWLELCAY
 XVBIAOEEOAUESQ
 PNPHWWFMBWLTMYK
 JHSFECBZYXSGVUT

Find the listed words in the diagram. They run in all directions forward, backward, up, down and diagonally

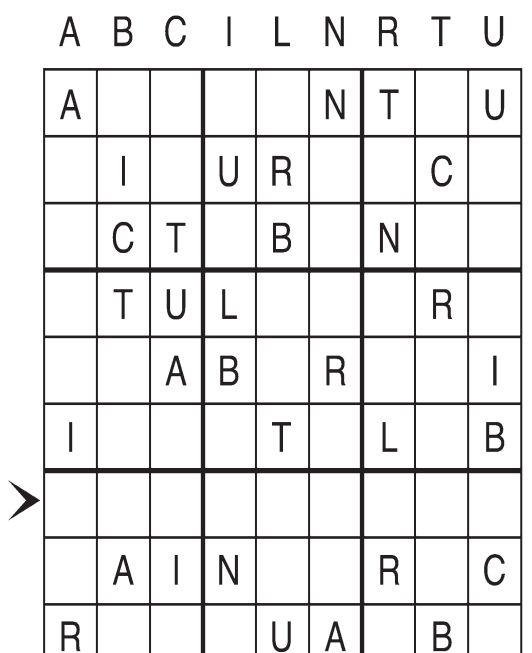
- | | | | |
|--------|--------|---------|---------|
| Bellow | Flow | Hollow | Slow |
| Below | Follow | Mellow | Swallow |
| Fallow | Glow | Pillow | Tallow |
| Fellow | Hallow | Shallow | |

© 2015 King Features Syndicate, Inc. All rights reserved.

Letter Box

by Linda Thistle

Place a letter in the empty boxes in such a way that each row across, each column down and each small 9-box square contains all of the letters listed above the diagram. When completed, the row indicated will spell out a word or words.



© 2011 King Features Synd., Inc.

Even Exchange

by Donna Pettman

Each numbered row contains two clues and two 6-letter answers. The two answers differ from each other by only one letter, which has already been inserted. For example, if you exchange the A from MASTER for an I, you get MISTER. Do not change the order of the letters.

- | | | | | | | | |
|------------------------|-----------|---|-----------|---------------------|-----------|---|-----------|
| 1. Mountain peak | — — — — — | M | — — — — — | Put forward | — — — — — | B | — — — — — |
| 2. Authoritative order | — — — — — | C | — — — — — | Diploma | — — — — — | G | — — — — — |
| 3. Runway walker | — — — — — | D | — — — — — | Traveler's inn | — — — — — | T | — — — — — |
| 4. Field or Struthers | — — — — — | L | — — — — — | Briny | — — — — — | T | — — — — — |
| 5. Lankier | — — — — — | A | — — — — — | Bank employee | — — — — — | E | — — — — — |
| 6. Grand or Teton | — — — — — | Y | — — — — — | Big gun | — — — — — | N | — — — — — |
| 7. Mars or Jupiter | — — — — — | T | — — — — — | Air Force One et al | — — — — — | S | — — — — — |
| 8. Playful sea mammal | — — — — — | T | — — — — — | Supplementary | — — — — — | H | — — — — — |
| 9. Inconsequential | — — — — — | O | — — — — — | Gold digger | — — — — — | E | — — — — — |
| 10. Sturdy | — — — — — | O | — — — — — | Kite rope | — — — — — | I | — — — — — |

Salome's Stars

ARIES (March 21 to April 19) Although taking advice isn't always easy for the headstrong Sheep, you might want to consider what someone you respect says about an upcoming decision.

TAURUS (April 20 to May 20) A new offer is tempting, but don't be bullied into a quick decision. Rely on your keen Bovine business sense to alert you to anything that might be questionable.

GEMINI (May 21 to June 20) Your Gemini Twin nature rallies to help you deal with this week's hectic schedules, both in your personal and professional lives. One caution: Watch your diet.

CANCER (June 21 to July 22) Avoid rushing to make up for time lost on a stalled workplace operation. Best to set up a schedule and pace yourself. Welcome the help of colleagues.

LEO (July 23 to August 22) Despite those glittering holiday distractions you love so well, be sure to keep your feline senses set on high to alert you to anything that might require fast action.

VIRGO (August 23 to September 22) Making an effort to restore fraying relationships proves to be more successful than you dared hope. The holidays also bring new friends into your life.

LIBRA (September 23 to October 22) Private and professional matters compete for your attention. Be honest in your assessment of which should get more of it, and for how long.

SCORPIO (October 23 to November 21) A seemingly endless list of must-do tasks is best handled by tackling them one by one, and taking energy-restoring timeouts between each job.

SAGITTARIUS (November 22 to December 21) A vexing relationship seems destined to deteriorate no matter what each side tries to do. A third party's advice just might prove helpful.

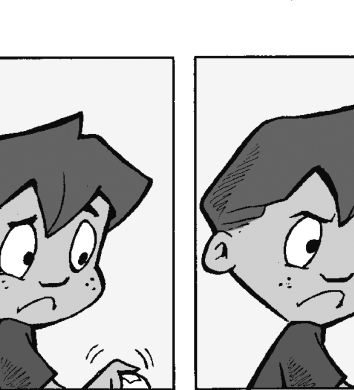
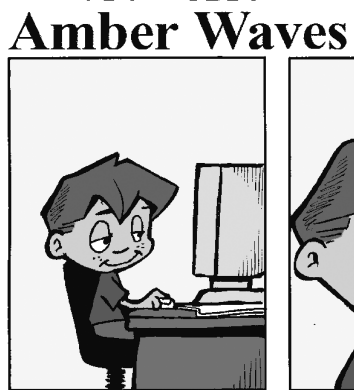
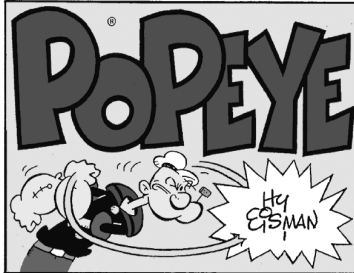
CAPRICORN (December 22 to January 19) Reach out to ease any tensions caused by home or workplace pressures before they threaten the relationship-building progress you've made.

AQUARIUS (January 20 to February 18) You often go out of your way to show kindness to others. So, don't be surprised if other people want to do something nice for you this week.

PISCES (February 19 to March 20) People in your life respect your Piscean wisdom, so don't hesitate to speak up about a matter that you feel isn't being handled quite the way it should be.

BORN THIS WEEK: Your personal warmth helps you make friendships, and your sense of fair play helps you keep them.

2015 King Features Syndicate Inc.



The Spats



by Mike Marland

by Dave T. Phipps

by Jeff Pickering