



River City Players hosted their annual camp for youngsters last week. This year's camp was well attended and it was called "Telling Estill County's Story." The camp concluded with the group performing a short play "Nothing To Do In This Town," written by Donna Crowe. The play will be expanded and River City Players will perform the larger version of it on September 4. Photo courtesy of Diane Smith

Annexation Opposition

Continued from Page 1

Oliver said the money made at those three or four businesses will leave Estill County at 6 each night. "At least the bootleggers will spend their money in this county," he stated. "Could they even allow alcohol sales because it was not in the original vote?" Taylor asked. County Clerk Sherry Fox said that another county-wide wet dry vote can will be held in three years. Taylor predicted that vote will happen. "And that's the wrong reason for annexation for sure," he said. "I would prefer to pay more county taxes than to pay city taxes," Oliver stated. Annexation is expected to be discussed at Irvine's next council meeting next Monday, July 27, 7 p.m. in city hall. The meeting is open to the public.



Let's Play Ball

Estill County did not have flash floods last week, but backwater from the Kentucky River came up. The usual roads were closed due to flooding. Above, the Kiwanis Ball Park was covered with water on Thursday morning.

Fiscal court tables an ordinance to restrain prisoners

Continued from Page 1

Mrs. Hayes said about 20 or 30 ATVs are tearing up the private road section. "We're getting ready to operate a 3,000 acre recreational vehicle park this weekend right near you," Taylor said. A bid was received for \$26,129.40 to purchase recording equipment for 911 calls. A bid was opened for drilling steel on roads. Hinkles was awarded the low bid. Six temporary employees were hired for the county road department. They were Boyd Henry, Russell Estes, Holden Hardy, Shawn Cox, Cody Lovin, and Jerry Branham. The county will be advertising for a home care aide for the Senior Citizen Center. The sheriff's tax settlement was accepted. Tax rates were entered into the minutes for the soil conservation, ambulance and library districts. The fiscal court also adopted property tax rates.

Artist Bill Berryman to demonstrate drawing at Ky. Artisan Center in Berea

On Saturday, July 25, Bill Berryman, of Winchester, will demonstrate drawing from 10:30 a.m. to 3:30 p.m. at the Kentucky Artisan Center at Berea. Berryman has been drawing all his life, since he was a small child. He received his Bachelor of Arts degree from Morehead State University and has been involved in art education since 1986, teaching upper-level visual art at the Sayre School in Lexington. Berryman's favorite subjects are places and things that he knows and loves best. One of these places is Shaker Village at Pleasant Hill, near Harrodsburg, where he has spent many hours drawing within this historic village. "I am fascinated by the amazingly simple, functional and beautiful designs created by the Shakers," he

said. "Shaker Village has inspired me to create a series of works in pencil, pen and ink and watercolor - all done directly on site." When drawing, Berryman uses Staedtler-Mars German pencils, known for their rich quality of graphite. He also uses pen and ink and watercolor to create portraits, still-life imagery and landscapes. "I use all kinds of paper when I draw - don't ask me why," he said. "I use anything from 80-pound to 140-pound weight paper, including watercolor paper, hot press Arches and Strathmore papers. I seem to like the texture it adds to my drawings." Berryman is a juried member of the Kentucky Guild of Artists and Craftsmen and is also a member of the Winchester Art Guild, The Winchester Drawing Society, The Lexington Art League, The Bluegrass Drawing Society and the Kentucky Watercolor Soci-



ety. Works by Berryman are regularly available at the center, located just off Interstate 75 at Berea Exit 77. The center's exhibits, shopping and travel information areas are open daily, year-round, from 9 a.m. to 6 p.m., with the cafe open from 9:30 a.m. to 4 p.m. Admission is free. The center features works by more than 700 artisans from more than 100 counties across the Common-

wealth. A gallery exhibit, "Turn, Turn, Turn: Lath-Turned Works by Kentucky Artisans," is on display through Sept. 12, and in the lobby "Weaving in Kentucky: A Continuing Tradition" is on display through Nov. 14. For information about the center's events call 859-985-5448, visit us on Facebook at www.facebook.com/kentucky.artisan.center, or go to the center's website at www.kentuckyartisancenter.ky.gov.

Basketball Try-Outs

Estill County Middle School Girls Basketball Try-Outs will be held Wednesday, July 22, 2-4 p.m. Girls trying out must have a current physical and try-out paper. If you have questions, please call Coach Bob Young at (859) 200-6925.

The Estill County Tribune

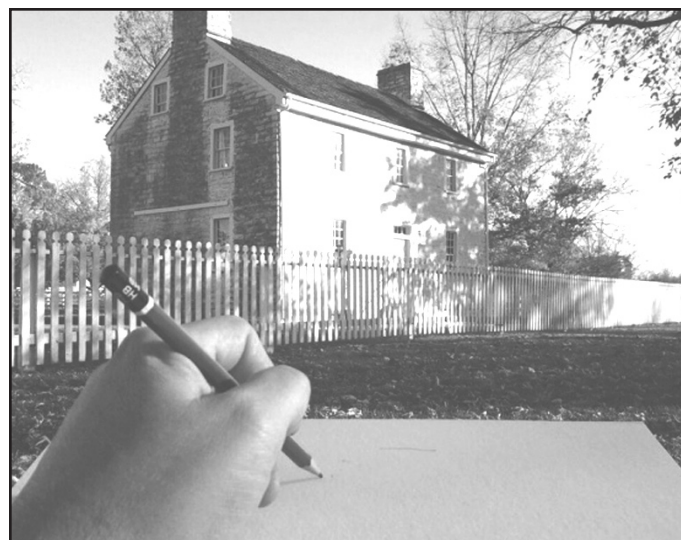
Estill County	Adj. Counties	Kentucky	Out of State
1 year \$16.04	1 year \$26.42	1 year \$30.19	1 year \$32.00
Sales Tax 0.96	Sales Tax 1.58	Sales Tax 1.81	Sales Tax 0.00
Total \$17.00	Total \$28.00	Total \$32.00	Total \$32.00

**Seniors, 65 and older, may deduct \$2.50 from above totals

Name _____
 Address _____
 City, State, Zip _____

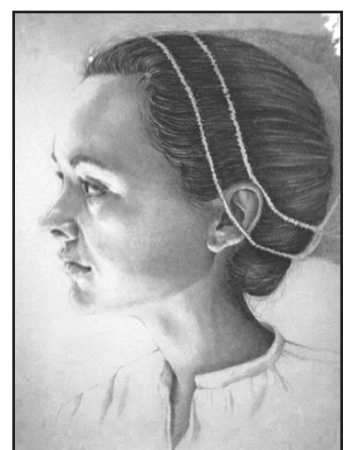
Send this form with proper payment to:

The Estill County Tribune
 6135 Winchester Road
 Irvine, Kentucky 40336-8517



GED Center Is Open

Yes, the GED center is open this summer. Please call 606-723-7323 for hours of operation.



MISSING
 Since July 5 on Estill Jackson line. Boston Terrier. Re-ward. Chubby 5 yr. old male, neutered, notched right ear. (606) 965-1224