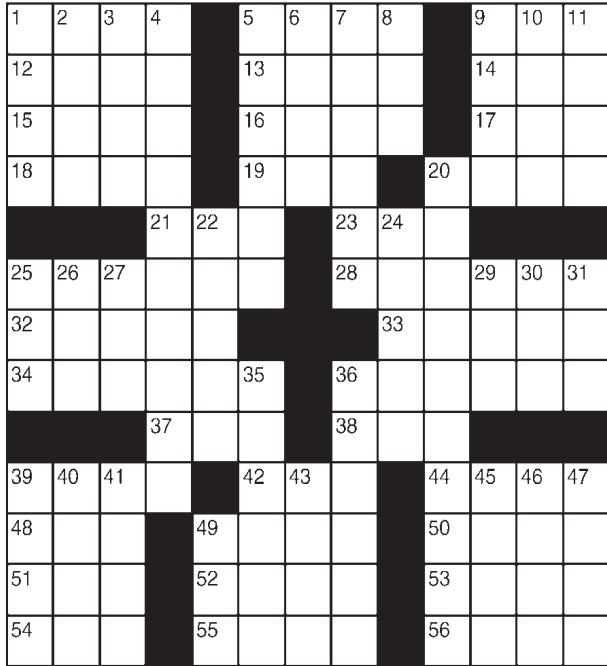


# King Crossword

**ACROSS**

- 1 Oil cartel
- 5 "Clue" weapon
- 9 Long, crosser
- 12 Within reach
- 13 Acknowledge
- 14 Wall climber
- 15 - Major
- 16 Yarborough of NASCAR
- 17 "A mouse!"
- 18 Canal zone
- 19 Sort
- 20 Remedy
- 21 Thither
- 23 Spring mo.
- 25 Sailing ship
- 28 Titanic's resting place
- 32 Attu dweller
- 33 Blue hue
- 34 Flight from danger
- 36 "Annus Mirabilis" poet
- 37 Started
- 38 Blond shade
- 39 Arrest
- 42 Facial feature
- 44 Look lasciviously



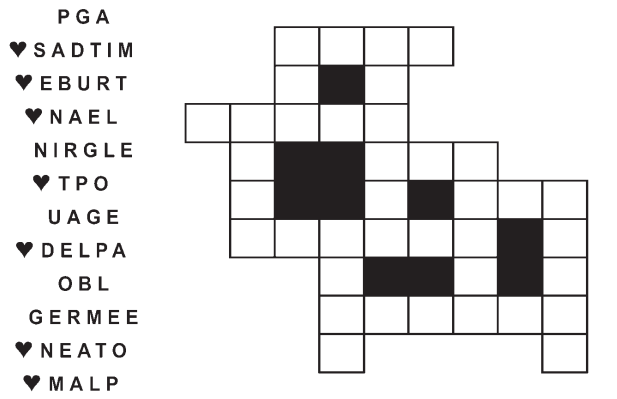
- 48 Illustrations
- 49 Director
- 50 Authentic
- 51 Id counterpart
- 52 Exam format
- 53 Run-down part of town
- 54 Agt.
- 55 "Pretty Woman" star
- 56 Taro root
- 4 Hodgepodge
- 5 Wisconsin city
- 6 Elliptical
- 7 Welk favorites
- 8 Ram's partner
- 9 Place
- 10 Maintain
- 11 Youngster
- 20 Little Big Horn commander
- 22 Bizarre
- 24 Bartletts, e.g.
- 25 "Humbug!"
- 26 Hearty brew
- 27 Rule, for short
- 29 Future bloom
- 30 Before
- 31 Lair
- 35 Urge, formally
- 36 Lag
- 39 Boxer Max
- 40 Incite
- 41 Halt
- 43 Hebrew month
- 45 Neuter
- 46 Praise highly
- 47 Red Muppet
- 49 Trot

© 2015 King Features Synd., Inc.

# FEAR KNOT

By: rj johnson

DOUBT? ... OR DARE!

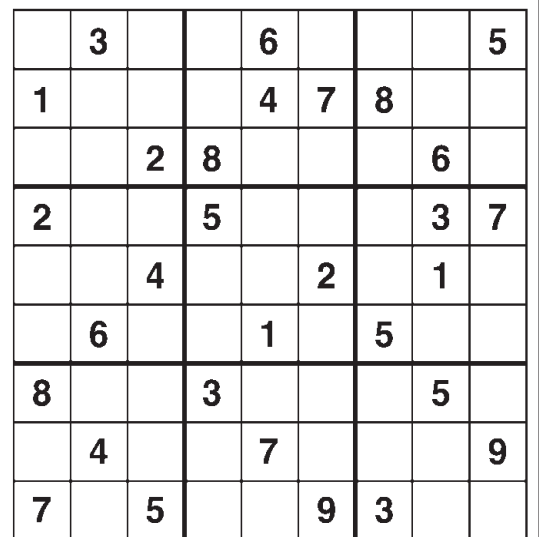


UNSCRAMBLE these twelve letter strings to form each into an ordinary word (ex. HAGNEC becomes CHANGE). Prepare to use only ONE word from any marked (♥) letter string as each unscrambles into more than one word (ex. ♥RATHE becomes HATER or EARTH or HEART). Fit each string's word either across or down to knot all twelve strings together.

NEW! 30 Fear Knot puzzles \$3.50 • Six Volumes • Order at rbmall.com

# Weekly SUDOKU

by Linda Thistle



Place a number in the empty boxes in such a way that each row across, each column down and each small 9-box square contains all of the numbers from one to nine.

**DIFFICULTY THIS WEEK: ★★**

★ Moderate ★★ Challenging  
★★★ HOO BOY!

© 2015 King Features Synd., Inc.

# Puzzles4Kids

by Helene Hovanec

## WORD FUN

Study the two words on each line to find the ONE letter in the left column that is NOT in the word in the right column. Write the extra letter on the blank space. Then read DOWN to answer this riddle:

**WHAT DOES A VEGGIE USE TO TRAVEL FROM THE FIELD TO THE SUPERMARKET?**

- |        |     |       |        |     |       |
|--------|-----|-------|--------|-----|-------|
| SATURN | ___ | RUNTS | SECURE | ___ | REUSE |
| TOWERS | ___ | WORSE | HATING | ___ | THING |
| THOMAS | ___ | MOTHS | BARLEY | ___ | RELAY |
| BOXERS | ___ | ROBES | ABSORB | ___ | BOARS |
| RUSTIC | ___ | CRUST | CROAKS | ___ | ROCKS |
|        |     |       | FRIDGE | ___ | FRIED |
|        |     |       | BAWLER | ___ | BRAWL |

For more puzzle fun, go to www.brainzles.com

# Just Like Cats & Dogs

by Dave T. Phipps



## MAGIC MAZE • CLOSED

J T Q N J G D A X U R O L J G  
D A X V S P N K I F C A X V S  
Q E O L J H C G E C A X V T R  
P N R L J D N H Y H F S N D N  
B Y X U V I N T A T R N O P O  
O M K I T P G I E I E O I U I  
D T B E O (COMMUNITY) S  
Z X E H W U A O T C R T C K S  
Q M S S O N F R L R L P E O E  
J I G F D F C A F I Y A L O S  
X W V T S R P O N C L C E B K

Find the listed words in the diagram. They run in all directions forward, backward, up, down and diagonally

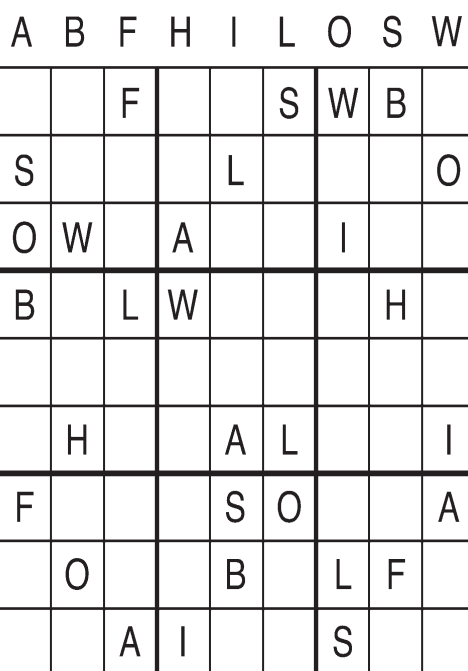
- |          |           |         |         |
|----------|-----------|---------|---------|
| Book     | Community | Meeting | Session |
| Captions | Election  | Mind    | Set     |
| Chain    | Fracture  | Off     | Society |
| Circuit  | Loop      | Out     |         |

© 2015 King Features Syndicate, Inc. All rights reserved.

# Letter Box

by Linda Thistle

Place a letter in the empty boxes in such a way that each row across, each column down and each small 9-box square contains all of the letters listed above the diagram. When completed, the row indicated will spell out a word or words.



© 2011 King Features Synd., Inc.

# Even Exchange

by Donna Pettman

Each numbered row contains two clues and two 6-letter answers. The two answers differ from each other by only one letter, which has already been inserted. For example, if you exchange the A from MASTER for an I, you get MISTER. Do not change the order of the letters.

- |                               |           |                       |           |
|-------------------------------|-----------|-----------------------|-----------|
| 1. BB                         | ___ E ___ | Young hen             | ___ U ___ |
| 2. Football trainer           | ___ A ___ | Snail                 | ___ N ___ |
| 3. 31 <sup>st</sup> president | ___ V ___ | Tap dancer            | ___ F ___ |
| 4. Bed linen                  | ___ H ___ | Sugary                | ___ W ___ |
| 5. Foyer                      | L ___     | Leisure pursuit       | H ___     |
| 6. Trade                      | ___ R ___ | Chit chat             | ___ N ___ |
| 7. Fire starter               | ___ T ___ | Toss                  | ___ G ___ |
| 8. Hovel                      | ___ H ___ | Pile up like pancakes | ___ T ___ |
| 9. Clothing ensemble          | ___ F ___ | Hoodwink              | ___ W ___ |
| 10. Adhesive compound         | ___ U ___ | Actress Duke          | ___ A ___ |

© 2015 King Features Synd., Inc.

# Salome's Stars

**ARIES** (March 21 to April 19) Cupid is strong in the Aries aspect this week, with the cherub opening romantic possibilities for single Lambs, and strengthening ties 'twixt loving pairs already in a caring relationship.

**TAURUS** (April 20 to May 20) Your dramatic flair might make things more interesting as you recount an event to your colleagues. But be careful not to exaggerate reality to the point that facts and fancy combine to form fiction.

**GEMINI** (May 21 to June 20) You love to talk, and this week you should get lots of chances to share your thoughts with people who will not only pay attention to what you have to say, but will want to hear more.

**CANCER** (June 21 to July 22) The pattern of recent changes could begin to shift from mostly workplace-related events to more personal matters. Continue to keep an open mind as you prepare to deal with them.

**LEO** (July 23 to August 22) An opportunity for work-related travel could be just what the Terrific Tabby needs to get a new perspective on a balky situation. The trip also could prove to be personally rewarding.

**VIRGO** (August 23 to September 22) You might want to suggest resolving an old disagreement before it can affect a matter expected to come up for discussion. It's always best to start with a clean slate.

**LIBRA** (September 23 to October 22) The week favors combining dollops of creativity and practicality to work out both professional and personal problems. A longtime friend could have something of note to suggest.

**SCORPIO** (October 23 to November 21) Some surprising facts could come to light if you decide to probe deeper into an "opportunity" than you might usually do. What you'll learn could determine what you'll earn.

**SAGITTARIUS** (November 22 to December 21) Someone close to you might seek your counsel. Hear him/her out, but hold the line at giving actual advice until you get credible answers to all your questions.

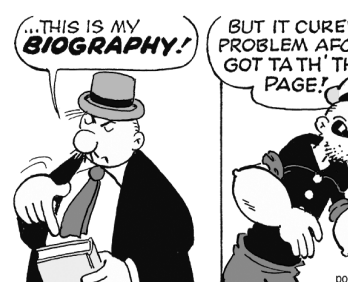
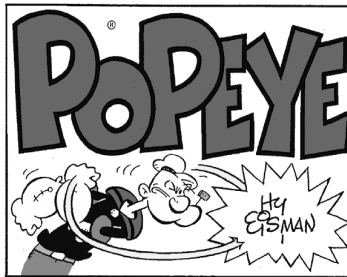
**CAPRICORN** (December 22 to January 19) What seems to be an overwhelming workplace project can be dealt with quite well if you handle one category at a time. Things will soon begin to fall into place.

**AQUARIUS** (January 20 to February 18) A personal matter might need more of your time than you had expected. Try to prioritize between your many outside commitments and your domestic responsibilities.

**PISCES** (February 19 to March 20) A developing situation still needs more time to grow, and more time to study before you can plunge in and make some attention-getting waves. Patience is best for wise Pisceans.

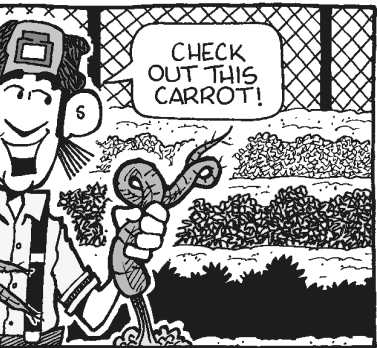
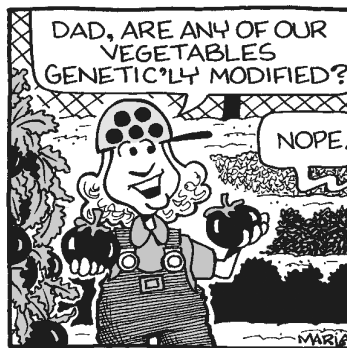
**BORN THIS WEEK:** You have a gift for organization that would make you a fine archivist. (Are you listening out there, Library of Congress?)

© 2015 King Features Syndicate Inc.



## R.F.D.

by Mike Marland



## Amber Waves

by Dave T. Phipps



## The Spats

by Jeff Pickering

