



Current FBLA State Officers and ECHS seniors, Tianna Richardson and Madison Sparks, represented Career and Technical Education (CTE) in Kentucky as they worked the CTE portion of the Ky. Dept. of Education booth at the state fair. (See story on Page 3)

Estill County Middle School Student of the Week



Braxton Conrad

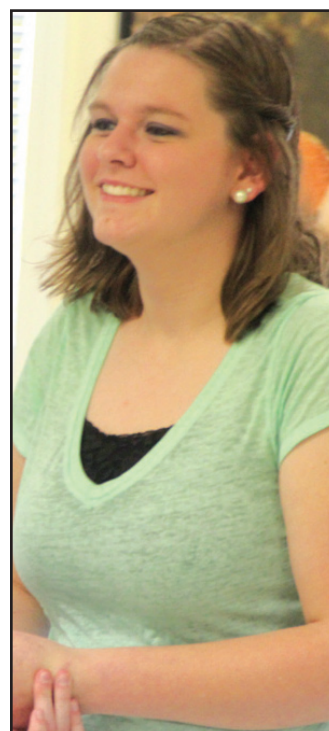
The Estill County Middle School Youth Service Center Student of the Week is Braxton Conrad! Braxton is the son of Brooklyn and Anthony Conrad, and is in the 6th grade. Braxton said he loves to ride his dirt-bike. He also loves to play baseball, football, and video games. Braxton said he loves to help out his classmates in any way he can! Braxton was selected as Student of the Week for being extra polite, helpful, and an all around great kid!



Justin Stamper received a pat on the head from a teammate after scoring the first touchdown for the Patriots on Thursday night against Clark Moores.



ABOVE: Students from Estill County High School visited the Morehead State University campus as part of the Early College Program, Wednesday, Aug. 26, 2015. More than 50 high and technical schools offered MSU classes during the fall semester with more than 2,000 high school students participating in the program. MSU and the partner schools are collaborating to meet a goal of 24 college credits for all high school students before they graduate. A minimum 3.0 grade point average and an 18 composite ACT score are necessary.



Shawna Eldridge was recognized on Monday night at the Extension Office on Stacy Lane for her participation in several 4-H activities. Eldridge was also recognized for being a gold 4-H honor recipient.



Lonnie Lawson, left, president and CEO of The Center for Rural Development, and Delaney Stephens, youth programs coordinator and community liaison for The Center, present 2015 Rogers Scholars graduate Abby Winkle of Estill County with a certificate for completing the program. Winkle, 16, is a junior at Estill County High School. (Photo courtesy of Sharon Dodson) (See story on Page 3, at right)



Well, the Lil' Lady 'Neers 04 have done it again, bringing home the Rival Round Up 10u championship held at Ravenna this past weekend. And not to mention that they also played 12u for the first time, finishing 3rd!! The ladies played 4 games on Saturday and 4 on Sunday, finishing the 10u with a record of 4/0 and 12u 2/2. As of this weekend they have played in eight 10u tournaments total with 4 championships, 3 runner-ups, one we won't talk about, and one 12u tournament finishing 3rd place. Congrats ladies and coaches; keep up the great work!!! Shown above are Lauren Farmer, Katie Johnson, Emma Winkle, Maci Muncie, Vanna Newton, Chelsea Hardy, Malory York, Neesa West, Henlee Hunter, Kylah Covey and Kerston Osborne.



"Students at West Irvine Intermediate were excited to receive their prizes, donated by Little Caesars in Irvine, for completing a level in Lexia! Students will continue to receive a Little Caesars prize throughout the school year as they complete a level in Lexia. A special thank you to Little Caesars for donating prizes to encourage student achievement!" (Photo courtesy of Sara W. Stringfield, FRC, WII)



CHALLENGER 500
STARTING AT \$8,499^{99*}

CHALLENGER 700
STARTING AT \$9,499^{99*}



Cub Cadet

EXCEPTIONAL FACTORY
AVAILABLE ON SELECT MODELS

FINANCING AVAILABLE!
TO QUALIFIED CUSTOMERS.



LS 25 CC
Log Splitters

- 160cc OHC Honda
- 25" Log Capacity
- 25 Ton Performance

STARTING AT:
\$1,399^{99*}



CSV 050
Chipper/Shredders

- 160cc OHV Cub Cadet
- 1.5" Chipping Capacity
- High Wheel Design

STARTING AT:
\$499^{99*}



2014 Z-Force LZ 60
Commercial Zero-Turn Rider

- 60" heavy-duty, triple-blade, sloped-nose, fabricated deck
- Hydro-Gear Charged ZT-3100 transmission

While Supplies Last!
STARTING AT:
\$4,499^{99*}

Bishop's
Small Engine Repair, INC

119 North Estill Avenue / Richmond, KY 40475
859-624-1893 www.bishopssmallenginerepair.com

*Subject to credit approval on a Cub Cadet credit card account. Not all customers qualify. Additional terms may apply. Please see your local Cub Cadet dealer for details.

*Product Price — Actual retail prices are set by dealer and may vary. Taxes, freight, setup and handling charges may be additional and may vary. Models subject to limited availability. Specifications and programs are subject to change without notice. Images may not reflect dealer inventory and/or unit specifications.