

Lady Engineers Get Wins Over Model And Pendleton

by **MIKE WISEMAN**
Estill Tribune Sportswriter

Estill 51 -- Model 48

After dropping seven of their last eight games, the Lady Engineers finally found some success this past week. Estill would take to the road to face Model last Thursday, hunting for a "W".

After a sluggish start and a poor shooting night, Estill would find themselves tied at the half, 19-19. Continued poor shooting (22.6%) would keep Estill from shaking the Lady Patriots and the Estill Ladies would find face a nine point deficit in the third quarter.

Coach Brian Hall would

put on the press and with some excellent defense at the right time, Estill would pull out the win by the score of 51-48.

ESTILL STATS:

S. Barnes 7 pts 2 reb, S. Brewer 9 pts 3 reb, S. Danyeur 6 pts 8 reb, M. Flynn 9 pts 10 reb, K. Treadway 4 pts 4 reb, T. Young 6 pts.

Estill 57 -- Pendleton 39

Estill would take a week-end trip to Pendleton County, and with some excellent second half play, the Lady Engineers would come home with win #11. Estill would outscore Pendleton in the second half 32-15.

Upcoming Games

The Lady Engineers' home contest on Monday night against Jackson City was cancelled due to weather and the makeup game against Lee County on Wednesday night looks iffy as well.

On Friday, the Ladies will host Berea and will take a trip to the mountains on Saturday to face a tough Knott County Central team.

Next Tuesday, February 16, the Ladies will host Buckhorn on Senior Night, and the following Thursday, they will travel to Wolfe County to close out the regular season.

Come out and support The Lady Engineers!!!! Go Big Blue!!!



Estill junior forward McKenzie Flynn (#32, black) tried to block the ball against the Powell County Lady Pirates on January 29th.

Elementary Basketball In Full Swing Despite Weather

**WEDNESDAY
FEB 10**

5:30 15 vs 13
6:30 26 vs 27
7:30 25 vs 23

**THURSDAY
FEB 11**

5:30 14 vs 11
6:30 12 vs 13
7:30 32 vs 34
8:30 33 vs 31

**THURSDAY
FEB 11**

5:30 7 vs 5
6:15 2 vs 8
7:00 6 vs 3
7:45 4 vs 1

**FRIDAY
FEB 12**

5:30 16 vs 17
6:30 28 vs 26
7:30 24 vs 21
8:30 22 vs 23

**SATURDAY
FEB 13**

10:00 13 vs 11
11:00 14 vs 15
12:00 27 vs 28
01:00 23 vs 21
02:00 24 vs 25
03:00 32 vs 33
04:00 31 vs 34

**TUESDAY
FEB 16**

5:30 6 vs 7
6:15 4 vs 5
7:00 2 vs 3
7:45 1 vs 8

Games shaded gray are played at West Irvine. Others at Central Office gym.

2016 Estill County Primary League

Teams & Coaches

Pre-1st

- 1 Jeffrey Jackson
- 2 Tyler Martin
- 3 Brandon Holloway
- 4 Robert Stepp
- 5 Chris Coffey
- 6 Robert Tipton
- 7 Jeremy Chapman
- 8 Dalon Ingram

2nd-3rd

- 11 Jay Bingham
- 12 Bill Friend
- 13 Brian Riddell
- 14 Brandon Holloway
- 15 Ryan Powell
- 16 D.P. McIntosh
- 17 Shaun Hale

4th-5th

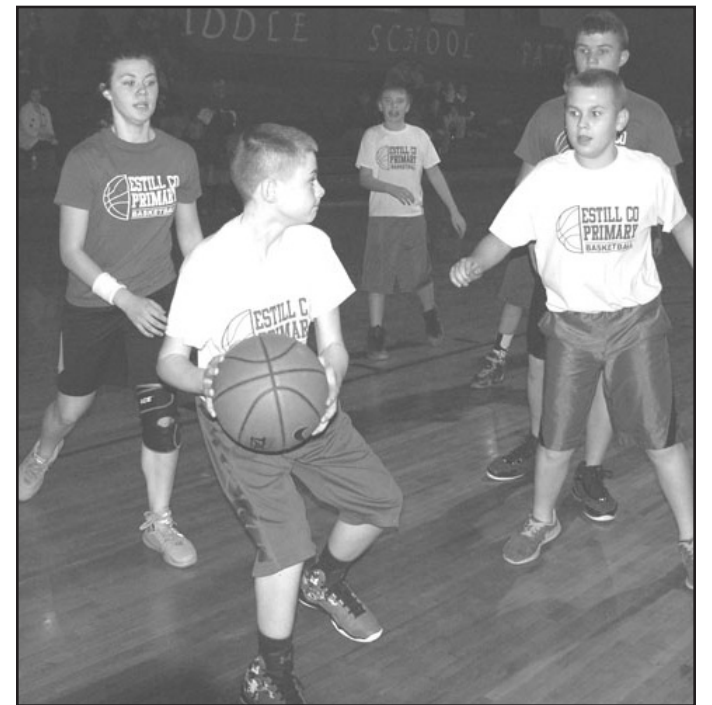
- 21 Shawn Chaney
- 22 Todd Maybrier
- 23 Bird Arvin
- 24 Shaun Hale
- 25 Tom Jones
- 26 Bryan Covey
- 27 Ronnie Riddell
- 28 Tambo Hardy

6th-8th

- 31 Brian Riddell
- 32 Shaun Hale
- 33 Jeremy Chapman
- 34 Billy Wiseman



ABOVE: The Red Team tries to block the White Team during elementary basketball action last Thursday night at Central Office gym. The Red Team is coached by Jay Bingham and the White by Brandon Holloway.



AT RIGHT: The Blue and White 6-8 grade teams battled it out on Thursday night with the Blue Team winning easily. Blue is coached by Brian Riddell and White is coached by Billy Wiseman.

Engineers Continue To Struggle

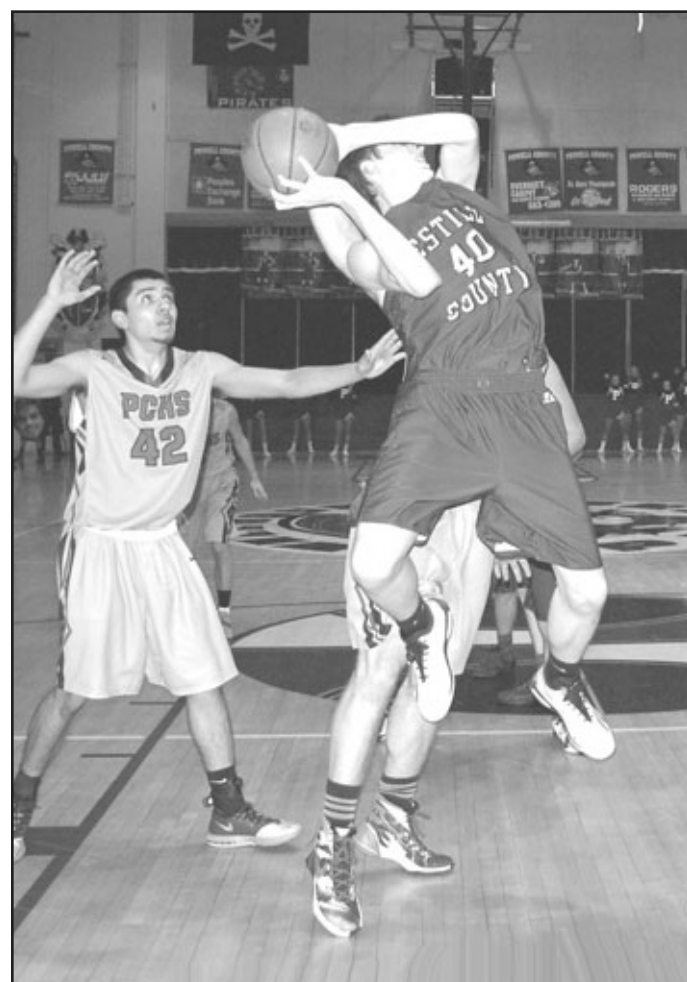
The young, inexperienced Estill County Engineers continue to struggle after a tough 43-36 loss to the Powell County Pirates at Stanton.

Estill has lost three more since then, to Hazard, 75-43, Buckhorn, 89-50, and Breathitt County, 73-56.

Only a few games remain before end-of-season playoffs but Powell County appears to have won the regular season championship and will likely be undefeated and will be the #1 seed in the district.

Estill may be able to finish in second with wins over the Owsley County Owls and the Lee County Bobcats when the weather improves.

The Engineers were scheduled to play at Jackson City on Tuesday night and will take on the Berea Pirates at home next Tuesday. They also play at home on the 18th and will travel away to Menifee to close out the season unless postponed games are rescheduled.



Estill sophomore center Andrew Doty (#40) tries a difficult shot against the Powell County Pirates during recent action in Stanton.

Engineers 7th Wins Tournament

Continued from Page 1

The only team other than Clark Moores to beat Estill this year or last year was Wolfe County. Last year they only played the Wolves once, away, and lost to them. This year they played Wolfe twice, winning once and losing once.

Before the game the boys told ECMS cheerleader Kaylee Henry they wanted to win the championship game for her mom who died of cancer in November. Sheri Tina Henry died at the age of 41 on Friday, November 20, 2015. She was the wife of Kenneth Wayne Henry and also the mother of Christian Wayne Henry. And the Estill boys came ready to play Saturday. They were great at rebounding, slowing the game down and playing together as a team. At the half Estill was up one with a score of 20-19. At end of third Estill led 32-28. They won the game 41-33.

Estill only lost three games both this year and last with 24-3 final records. Their two-year record is 48-6.

This has been a good year for Estill Middle School teams. The last ever 6th grade Lady Patriots girls team won the Commonwealth Conference's regular season this year and also won the 6th grade Commonwealth Conference girls basketball tournament. The middle school girls will now be the Lady Engineers.

Just a few weeks ago, this 7th grade Estill Engineers team and the 6th and 8th grade teams as well won their respective 56th District

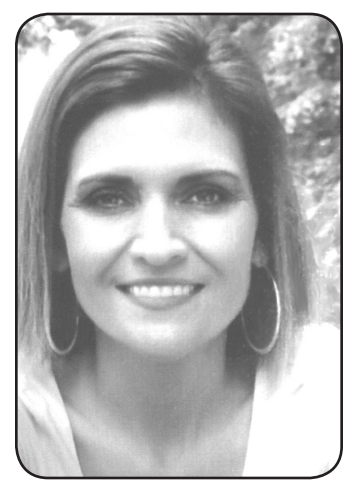
tournaments.

The 56th District is composed of Estill, Lee, Owsley and Powell counties. The Commonwealth Conference is made up of 8 teams including all the Madison County middle schools: Model, Foley, Farristown, Madison Middle, Caudill, and Clark Moores; along with Rockcastle and Estill.

The 7th grade team would like to thank McKeagan Wilburn's dad, Tommy, for buying their meal after the game at Logan's. They also want to thank him for renting two rooms and taking them swimming at a hotel

to celebrate their victory.

Story and photos courtesy of Rebecca Click



Sheri Tina Henry



Before the death of Sheri Tina Henry, all ECMS ball teams wore purple wristbands and purple shoelaces in their ball shoes in early November, to support her battle with cancer. Sheri's daughter, Kaylee, is a cheerleader at ECMS. (Photo courtesy of Rebecca Click)