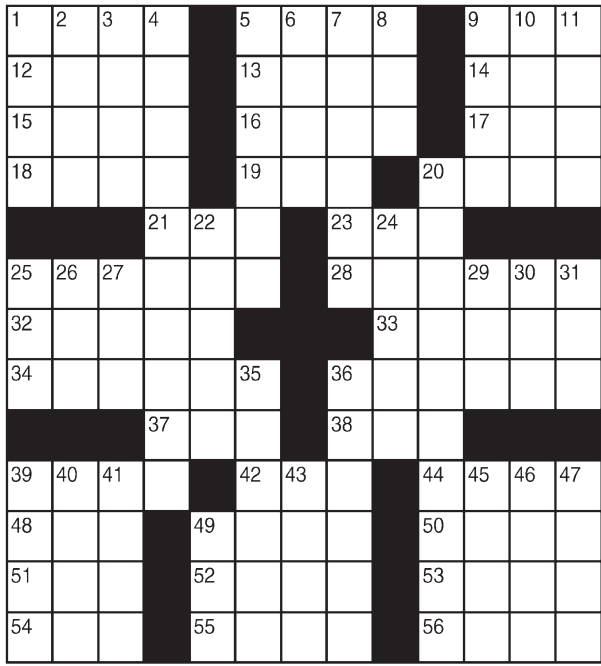


# King Crossword

**ACROSS**

- 1 Let the cat out of the bag
- 5 Culture medium
- 9 Seek damages
- 12 Frost
- 13 Contemptible
- 14 Moreover
- 15 Saharan
- 16 Sculpted head
- 17 18-wheeler
- 18 Pedestal part
- 19 "The Greatest"
- 20 Fisherman's hope
- 21 TV watchdog org.
- 23 Away from NNW
- 25 In a just manner
- 28 Certainly
- 32 Nome dome home
- 33 Heart line?
- 34 Aromatic resin
- 36 Brawl
- 37 Supplement, with "out"
- 38 Scoot
- 39 Alger's "before"
- 42 Twitch
- 44 Lends a hand
- 48 Coloration
- 49 Pruritus
- 50 Thought



- 51 Freddy's street
- 52 -- gin fizz
- 53 Lounge about
- 54 Billboards
- 55 Repair
- 56 Narrow opening
- 6 France, once
- 7 Francis' home
- 8 On Soc. Sec., maybe
- 9 Hindu garment
- 10 One
- 11 Advantage
- 20 Sideshow performer's cot?
- 22 Cape
- 24 Glitch
- 25 White lie
- 26 Khan title
- 27 Not up to par
- 29 Blunder
- 30 Greek vowel
- 31 Rotation
- 6 duration
- 7 Stamina
- 8 Like some eyebrows
- 9 Comical Caroline
- 40 "-- Lang Syne"
- 41 Pirate treasure, in part
- 43 Pedestal occupant
- 45 "American --"
- 46 Sandwich shop
- 47 Sodium chloride
- 49 Doctrine

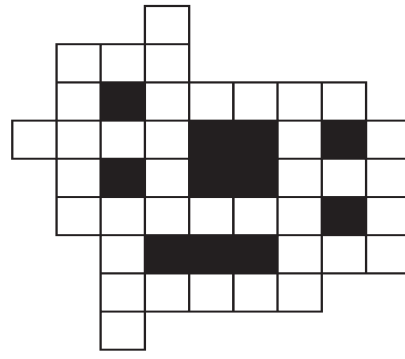
© 2016 King Features Synd., Inc.

# FEAR KNOT

By: rj johnson

DOUBT? ...OR DARE!

- NAF
- ERATON
- ♥ DIPER
- ERKT
- PINKAN
- ♥ EPA
- ♥ ENKE
- ♥ TOFAL
- ♥ AET
- TADFEE
- ♥ SOTRO
- ♥ ARDE



Unscramble these twelve letter strings to form each into an ordinary word (ex. HAGNEC becomes CHANGE). Prepare to use only ONE word from any marked (♥) letter string as each unscrambles into more than one word (ex. ♥RATHE becomes HATER or EARTH or HEART). Fit each string's word either across or down to knot all twelve strings together.

NEW! 30 Fear Knot puzzles \$3.50 • Six Volumes • Order at rbmamall.com

# Puzzles4Kids

by Helene Hovanec

## CODED RIDDLE

Change each letter to the one that comes immediately BEFORE it in the alphabet to find a riddle and its answer.

Here's a copy of the alphabet to guide you:

A B C D E F G H I J K L M N O P Q R S T U V W X Y Z

XIBU JT B TIBSL'T GBWPSJUF

TBOEXJDI? QFBOVU CVUUF S BOE

KFMMZGJTI.

## Just Like Cats & Dogs

by Dave T. Phipps



## STATES WITH A MAGIC MAZE ● PLACE NAMED COLUMBUS

N I F A D A X V A N A I D N I  
 T N Q ( M I N N E S O T A ) O L M  
 J I I H F G D E C A H N L Y W  
 U A R S Y R R A W P N I L J H  
 F D K U N K B O K Y N L O Z X  
 V T R S O O C Q E O O O O M K  
 K A N S A S C U I G T R I H F  
 D B Z Y A R S S T W V A K T R  
 Q O N X L K B I I N I C H F D  
 C A E O C I X E M W E N Z X W  
 V T U S A N A T N O M K R Q O

Find the listed words in the diagram. They run in all directions forward, backward, up, down and diagonally

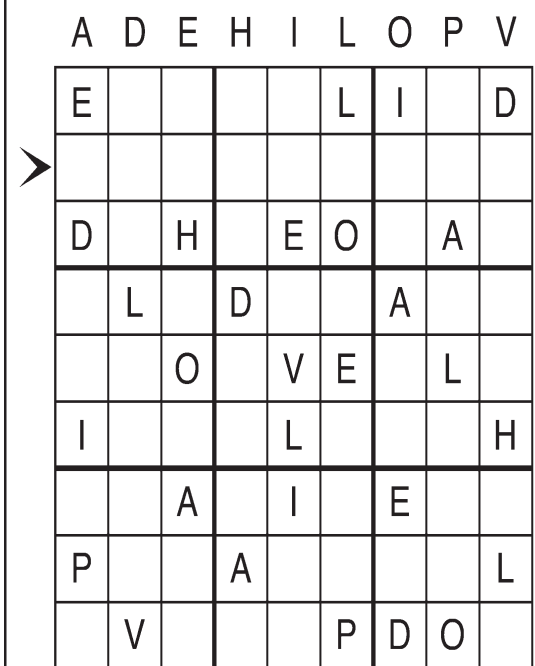
Georgia Kentucky N. Carolina New York  
 Illinois Minnesota N. Dakota Texas  
 Indiana Missouri Nebraska Wisconsin  
 Kansas Montana New Mexico

© 2016 King Features Syndicate, Inc. All rights reserved.

## Letter Box

by Linda Thistle

Place a letter in the empty boxes in such a way that each row across, each column down and each small 9-box square contains all of the letters listed above the diagram. When completed, the row indicated will spell out a word or words.



© 2012 King Features Synd., Inc.

## Even Exchange

by Donna Pettman

Each numbered row contains two clues and two 6-letter answers. The two answers differ from each other by only one letter, which has already been inserted. For example, if you exchange the A from MASTER for an I, you get MISTER. Do not change the order of the letters.

- |                        |                     |                     |                     |
|------------------------|---------------------|---------------------|---------------------|
| 1. 4-leafed greenery   | _____ V _____       | Late-inning pitcher | _____ S _____       |
| 2. Drummer Starr       | R _____             | Game of chance      | B _____             |
| 3. Cultivator          | _____ A _____       | More secure         | _____ I _____       |
| 4. Chitchat            | _____ T _____       | Flag                | _____ N _____       |
| 5. Graph               | _____ _____ T _____ | Bracelet bangle     | _____ _____ M _____ |
| 6. Sugary              | _____ W _____       | Icy rain            | _____ L _____       |
| 7. Nappy               | _____ A _____       | Ladle               | _____ P _____       |
| 8. Flying baby bringer | _____ _____ K _____ | Shop                | _____ _____ E _____ |
| 9. By oneself          | _____ L _____       | Make amends         | _____ T _____       |
| 10. Water voyage       | C _____             | Black-and-blue mark | B _____             |

## Salome's Stars

**ARIES** (March 21 to April 19) A more harmonious aspect favors all relationships. Family ties with mates and children are strengthened. Libra is Cupid's choice to win the amorous Aries' heart.

**TAURUS** (April 20 to May 20) The bold Bull is ready to take on fresh challenges. Expect some opposition as you plow new ground – but supporters will outnumber detractors.

**GEMINI** (May 21 to June 20) An upcoming job change could mean uprooting your family to a far-distant location. Weigh all considerations carefully before making a decision one way or the other.

**CANCER** (June 21 to July 22) A long-standing problem is resolved by a mutually agreed upon compromise. You can now focus on getting the facts you'll need for a decision you'll soon be asked to make.

**LEO** (July 23 to August 22) The Big Cat needs to be wary of what appears to be a golden investment opportunity. That "sure thing" could turn out to be nothing more than a sack of Kitty Glitter.

**VIRGO** (August 23 to September 22) You give of yourself generously to help others, but right now you must allow people to help you. Confide your problems to family and trusted friends.

**LIBRA** (September 23 to October 22) Relationships benefit from a strong harmonious aspect. Things go more smoothly at work. Someone you thought you'd never see again asks for a reconciliation.

**SCORPIO** (October 23 to November 21) A minor distraction interferes with travel plans, but the delay is temporary. Meanwhile, expect to play peacemaker once again for feuding family members.

**SAGITTARIUS** (November 22 to December 21) Keep that positive momentum going on the home front. Arrange your schedule to spend more time with your family. You'll soon have news about that job change.

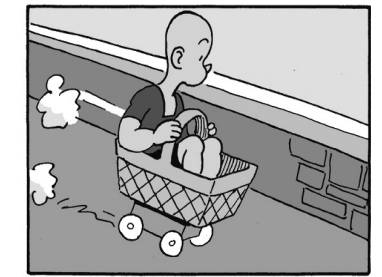
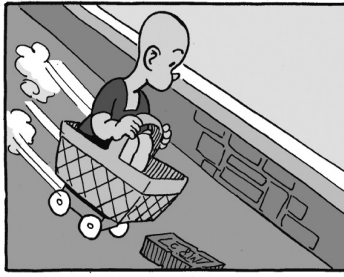
**CAPRICORN** (December 22 to January 19) Control that possessive tendency that sometimes goads you into an unnecessary display of jealousy. You could be creating problems where none currently exist.

**AQUARIUS** (January 20 to February 18) A new project holds some challenges you hadn't expected. But don't be discouraged; you'll find you're more prepared to deal with them than you realized.

**PISCES** (February 19 to March 20) Yours is the sign of the celestial Chemist, so don't be surprised if you experience a pleasant "chemistry" betwixt yourself and that new Leo in your life.

**BORN THIS WEEK:** You enjoy being fussed over, as befits your "royal" Leonine nature. You also have a strong loyalty to family and friends.

© 2016 King Features Synd., Inc.



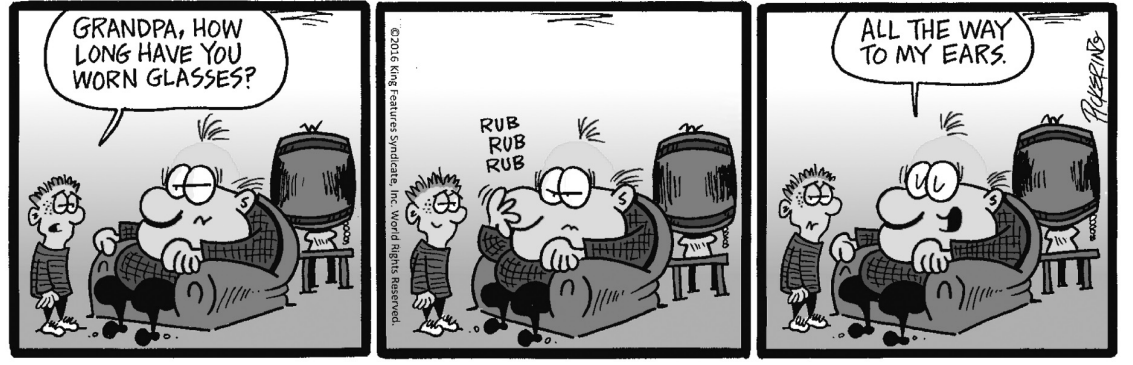
## R.F.D. by Mike Marland



## Amber Waves

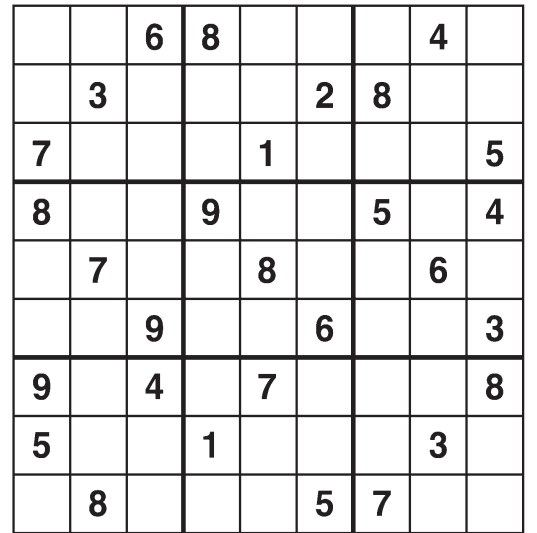


## The Spats



## Weekly SUDOKU

by Linda Thistle



Place a number in the empty boxes in such a way that each row across, each column down and each small 9-box square contains all of the numbers from one to nine.

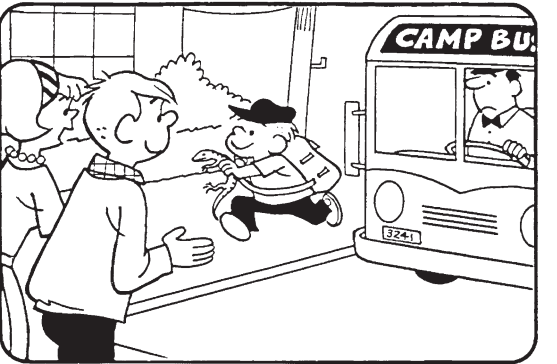
### DIFFICULTY THIS WEEK: ♦♦

- ♦ Moderate
- ♦♦ Challenging
- ♦♦♦ HOO BOY!

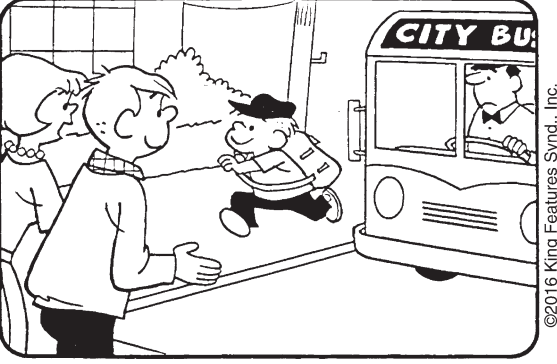
© 2016 King Features Synd., Inc.

## HOCUS-FOCUS

BY HENRY BOLTINOFF



Find at least six differences in details between panels.



Differences: 1. Headband is missing. 2. Arm is moved. 3. Lizard is missing. 4. Bus name is different. 5. Bus mirror is smaller. 6. License is missing.

New! 24 HOCUS FOCUS puzzles \$3.50 • 24 Volumes • Order at rbmamall.com