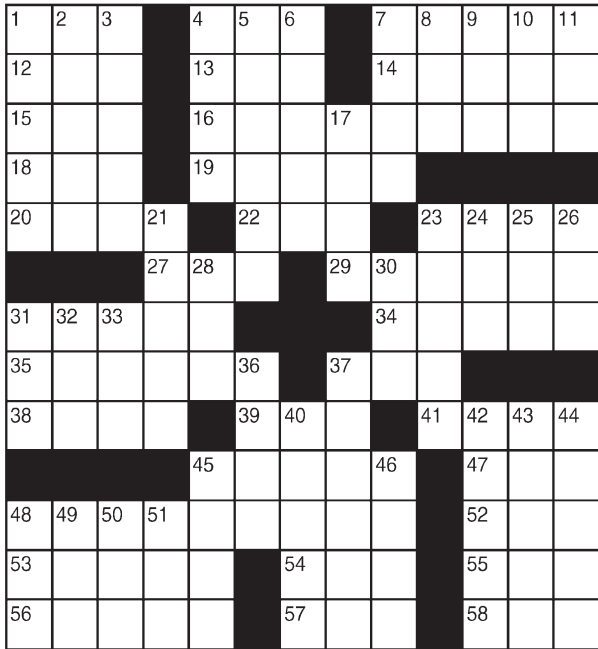


# King Crossword

**ACROSS**

- 1 The girl
- 4 Possesses
- 7 Man of morals?
- 12 Crone
- 13 Oklahoma city
- 14 Give birth to, on a farm
- 15 Fix the outcome
- 16 Record-setting fast-baller
- 18 Craft from far off
- 19 Jack
- 20 Ricochet, in billiards
- 22 Bachelor's last words
- 23 TV clown
- 27 They're between mus and xis
- 29 Someone who carries a torch?
- 31 Some skirts
- 34 Passenger
- 35 Easily built home
- 37 Held a meeting
- 38 Abhor
- 39 Carte lead-in
- 41 Dreyfus defender
- 45 Go
- 47 Sharp turn
- 48 She played Granny



- Clampett
- 52 Sapporo sash
- 53 Heals
- 54 Id counter-part
- 55 Negative prefix
- 56 Heron's cousin
- 57 In medias —
- 58 Work unit
- DOWN**
- 1 Bush
- 2 Israeli port
- 3 Incite
- 4 Williams of country
- 5 Handsome youth
- 6 Dieter's lunch
- 7 Dermatologist's case
- 8 Listener
- 9 Willy
- 10 Eggs
- 11 Nerd-pack occupant
- 17 Acknowledged atmospheric region
- 21 Bowie's weapon
- 23 Shut out
- 24 Peculiar
- 25 Last letter
- 26 Bobby of hockey
- 28 Can. neighbor
- 30 Geological period
- 31 Speedometer abbr.
- 32 Playwright
- Levin
- 33 Trawler need
- 36 Boxer Max
- 37 Ferocious
- 40 See 42-Down
- 42 With 40-Down, depleted atmosphere
- 43 Toil
- 44 Gerontologist's study
- 45 For fear that
- 46 Grandson of Eve
- 48 Lemieux milieu
- 49 Carpet
- 50 Mess up
- 51 Born

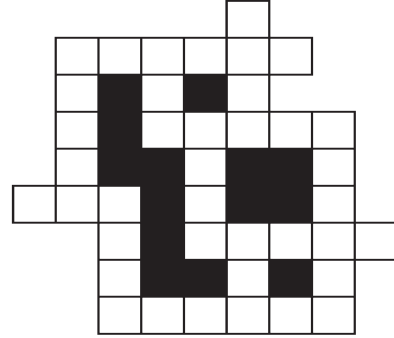
© 2016 King Features Synd., Inc.

# FEAR KNOT

By: rj johnson

DOUBT? ...OR DARE!

- AHM
- ♥ RENISH
- ♥ RHEEW
- ♥ TSNE
- TARYAS
- ERI
- ♥ TWEH
- ♥ TESIM
- ♥ EWN
- MYTLIR
- ♥ TAYME
- ♥ ERYE



Unscramble these twelve letter strings to form each into an ordinary word (ex. HAGNEC becomes CHANGE). Prepare to use only ONE word from any marked (♥) letter string as each unscrambles into more than one word (ex. ♥RATHE becomes HATER or EARTH or HEART). Fit each string's word either across or down to knot all twelve strings together.

NEW! 30 Fear Knot puzzles \$3.50 • Six Volumes • Order at rbmall.com

# Puzzles4Kids

by Helene Hovanec

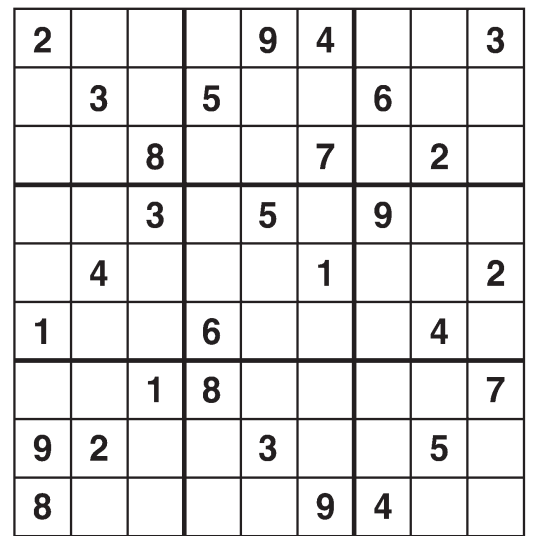
**RIDDLE SEARCH - WHAT'S FOR DINNER?**  
Look up, down, and diagonally, both forward and backward to find every word on the list. Circle each one as you find it. When all the words are circled, take the UNUSED letters and write them on the blanks below. Go from left to right and top to bottom to find the answer to this riddle: **What did the skeleton order for dinner?**

- |           |   |   |   |   |   |   |   |   |   |   |
|-----------|---|---|---|---|---|---|---|---|---|---|
| BISON     | M | E | A | T | B | A | L | L | S | S |
| BURGERS   | V | A | Y | N | A | P | S | T | E | W |
| CASSEROLE | A | E | H | E | U | C | R | L | E | I |
| EGGS      | H | S | A | H | K | T | O | G | I | L |
| HAM       | S | B | R | L | E | R | G | S | P | D |
| HASH      | A | T | I | E | E | S | U | R | T | R |
| MEATBALLS | L | T | E | S | G | I | S | T | O | I |
| PASTA     | A | T | S | A | O | R | T | O | P | C |
| PORK      | D | A | I | A | K | N | U | I | U | E |
| POT PIE   | C | K | R | O | P | B | S | B | Z | P |
| POT ROAST |   |   |   |   |   |   |   |   |   |   |
| SALAD     |   |   |   |   |   |   |   |   |   |   |
| SOUP      |   |   |   |   |   |   |   |   |   |   |
| STEAK     |   |   |   |   |   |   |   |   |   |   |
| STEW      |   |   |   |   |   |   |   |   |   |   |
| TACOS     |   |   |   |   |   |   |   |   |   |   |
| TUNA      |   |   |   |   |   |   |   |   |   |   |
| TURKEY    |   |   |   |   |   |   |   |   |   |   |
| VEAL      |   |   |   |   |   |   |   |   |   |   |
| WILD RICE |   |   |   |   |   |   |   |   |   |   |
| ZITI      |   |   |   |   |   |   |   |   |   |   |

Riddle answer: \_\_\_\_\_

# Weekly SUDOKU

by Linda Thistle



Place a number in the empty boxes in such a way that each row across, each column down and each small 9-box square contains all of the numbers from one to nine.

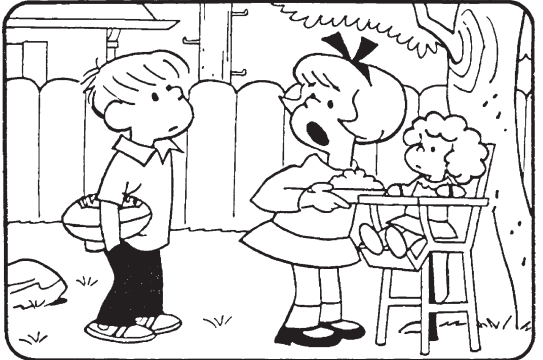
## DIFFICULTY THIS WEEK: ♦♦

- ♦ Moderate
- ♦♦ Challenging
- ♦♦♦ HOO BOY!

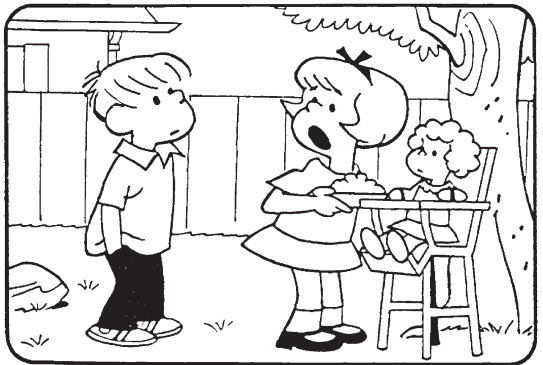
© 2016 King Features Synd., Inc.

# HOCUS-FOCUS

BY HENRY BOLTIHOFF



Find at least six differences in details between panels.



Differences: 1. Fence is shorter. 2. Football is missing. 3. Pole is missing. 4. Sleeve is shorter. 5. Bow is smaller. 6. Doll's hair is different.

New! 24 HOCUS FOCUS puzzles \$3.50 • 24 Volumes • Order at rbmall.com

# Just Like Cats & Dogs

by Dave T. Phipps



# MAGIC MAZE ● TEXT-SPEAK

Y K I F C Z W U R B P M J H E  
 C 8 T Z X P U S I Q 8 N L J G  
 S E R A C Z U G X F V T R R P  
 N S L C E J G S T H E C 8 A 9  
 A N Y N E R Y H P 8 W 8 L V F  
 T R P R I T G N L U M H R T E  
 K K I N R I A G E C S E E W N  
 B Y ( B E F O R E B 4 ) Z T T I  
 X G A W U S S R R P O A A A F  
 M L J K L K L O O C I H L H M  
 G E D B O X X X S S I K A W W

Find the listed words in the diagram. They run in all directions forward, backward, up, down and diagonally

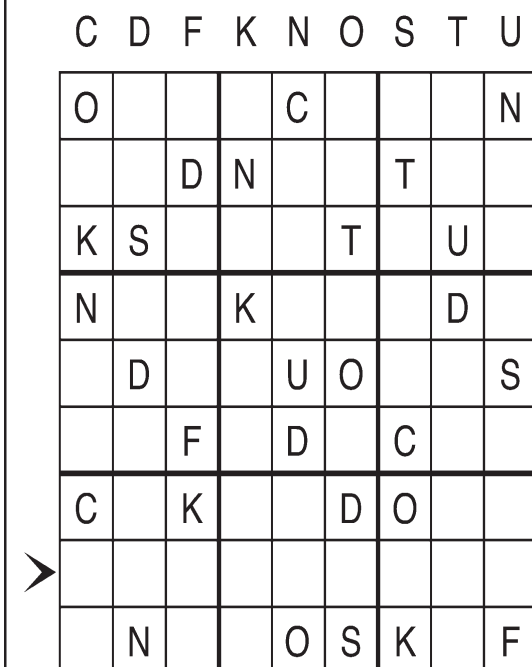
- |             |            |           |               |
|-------------|------------|-----------|---------------|
| Any ne      | Create cr8 | Kiss xxx  | So sorry ss   |
| Before b4   | Fight f8   | Later l8r | What wt       |
| Big grin bg | Fine f9    | Mate m8   | What's up sup |
| Cool kl     | Hate h8    | Okay k    |               |

© 2016 King Features Syndicate, Inc. All rights reserved.

# Letter Box

by Linda Thistle

Place a letter in the empty boxes in such a way that each row across, each column down and each small 9-box square contains all of the letters listed above the diagram. When completed, the row indicated will spell out a word or words.



© 2012 King Features Synd., Inc.

# Even Exchange

by Donna Pettman

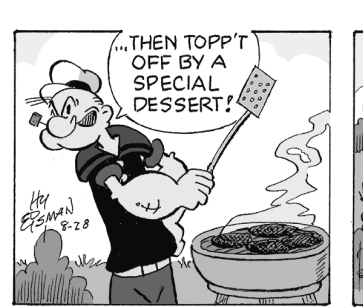
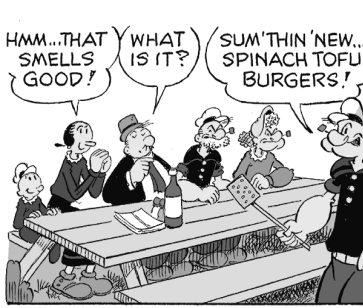
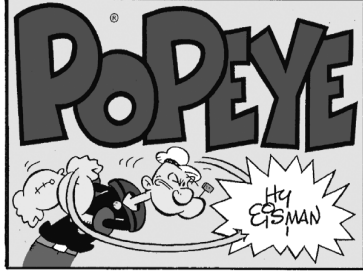
Each numbered row contains two clues and two 6-letter answers. The two answers differ from each other by only one letter, which has already been inserted. For example, if you exchange the A from MASTER for an I, you get MISTER. Do not change the order of the letters.

- |                      |             |                    |             |
|----------------------|-------------|--------------------|-------------|
| 1. Poker hand        | F _ _ _ _ _ | Redden in the face | B _ _ _ _ _ |
| 2. Unmarried         | S _ _ _ _ _ | Socialize          | M _ _ _ _ _ |
| 3. Talisman          | _ _ _ _ M _ | Graph              | _ _ _ _ T _ |
| 4. Sell abroad       | _ _ _ _ O _ | Specialist         | _ _ _ _ E _ |
| 5. Goliath, e.g.     | _ _ I _ _ _ | Civil War general  | _ _ R _ _ _ |
| 6. Actress Elizabeth | _ _ _ Y _ _ | Clothes maker      | _ _ _ I _ _ |
| 7. Arms and legs     | _ _ _ _ S _ | Caribbean dance    | _ _ _ _ O _ |
| 8. President Johnson | _ Y _ _ _ _ | Thames city        | _ _ O _ _ _ |
| 9. Round map         | _ _ _ _ B _ | Hand warmer        | _ _ _ _ V _ |
| 10. Pebble           | S _ _ _ _ _ | Make amends        | A _ _ _ _ _ |

# Salome's Stars

**ARIES** (March 21 to April 19) Mars, your ruling planet, helps you deal with career challenges in a way that reflects some of your own hidden strengths. This impresses some important decision-makers.  
**TAURUS** (April 20 to May 20) Your strong Bovine will, combined with your romantic nature (you are ruled by Venus), helps turn a romance with a potential for problems into one with more-positive possibilities.  
**GEMINI** (May 21 to June 20) Mercury's influence creates some unsettling moments, but nothing that you can't live with. You'll soon learn more about that major change that is about to be revealed.  
**CANCER** (June 21 to July 22) Opportunities for you are like the phases of the Moon: constantly appearing and reappearing. So, cheer up. The opportunity you think you let slip by will be replaced by another.  
**LEO** (July 23 to August 22) An opportunity that you hoped would open up for you remains closed. Stop wasting time scratching at it. Something else you'll like will soon make itself apparent and accessible.  
**VIRGO** (August 23 to September 22) Congratulations. You'll soon hear some positive feedback for all the hard work you recently put into a project. A Pisces could soon swim into your personal life.  
**LIBRA** (September 23 to October 22) Someone whose friendship you felt you had to write off will try to revive it. What you do is up to you. But don't do it without giving it considerable thought.  
**SCORPIO** (October 23 to November 21) A job-related plan might need to be re-worked to allow for changes. Lucky for you that Saturn remains a strong influence that can help you focus on getting it done right.  
**SAGITTARIUS** (November 22 to December 21) This is a good time to move into areas of self-discovery. You might be surprised about who you really are and how you really relate to those around you.  
**CAPRICORN** (December 22 to January 19) Expect to confront someone who will make an unwelcome request. Stand by your resolve to do the right thing no matter what "persuasion" might be offered.  
**AQUARIUS** (January 20 to February 18) A friendly competition could become more contentious than you expected. Take time out to discuss the reasons behind this unexpected change, and act accordingly.  
**PISCES** (February 19 to March 20) You have a wonderful mind for solving mysteries, so you should feel confident about solving the one developing very close to you. An unlikely source offers help.  
**BORN THIS WEEK:** You're a great host or hostess. You love being with people, and you're very good about planning all sorts of social events that bring folks together.

(c) 2016 King Features Synd., Inc.



# R.F.D.



# Amber Waves



# The Spats



© 2016 King Features Synd., Inc.