

# Irvine First Christian Will Be Celebrating 150<sup>th</sup> Anniversary

Irvine First Christian Church will be celebrating its 150th anniversary this coming Sunday, September 18, 2016 with a special homecoming service starting at 10:00 a.m.

Former ministers David Blondell and Greg Widener will be returning as well as Glenn Scrivner, who will be playing the organ and/or piano.

A potluck meal will follow the service and there will be lots of memorabilia and pictures to look at that follows the history of the church through the years.

There will be commemorative plates and mugs and book marks for sale to remember this momentous occasion.

### Historical Sketch

The First Christian Church has its beginning about 1870 when Rev. John Adams, a blacksmith preacher from Clark County held services in the old Estill County Court House.

The church later met in the Presbyterian Church for two Sundays a month.

The small congregation led by Rev. Williams and Rev. Overton Azbill had a growing desire to have a building of their own. Captain Thomas, owner of the Estill Springs Hotel, said he would buy the lot at the corner of Main Street and Richmond Road (now Carhart Avenue, across the street from the present church) to build a church where it would be convenient for his guests to attend.

Rev. L.H. Reynolds was the pastor when the church was completed. They owed only a few hundred dollars,

but the pastor refused to dedicate the building until it was paid.

The congregation decided the one-room structure was not enough so the present building was erected at a cost of \$70,000. and dedicated on August 28, 1927 by George L. Snively during the ministry of the Rev. Cleo Purvis. According to an original history, the old church still stands and is used as an apartment complex across from the church.

The financial burden of the new building was a problem during the depres-

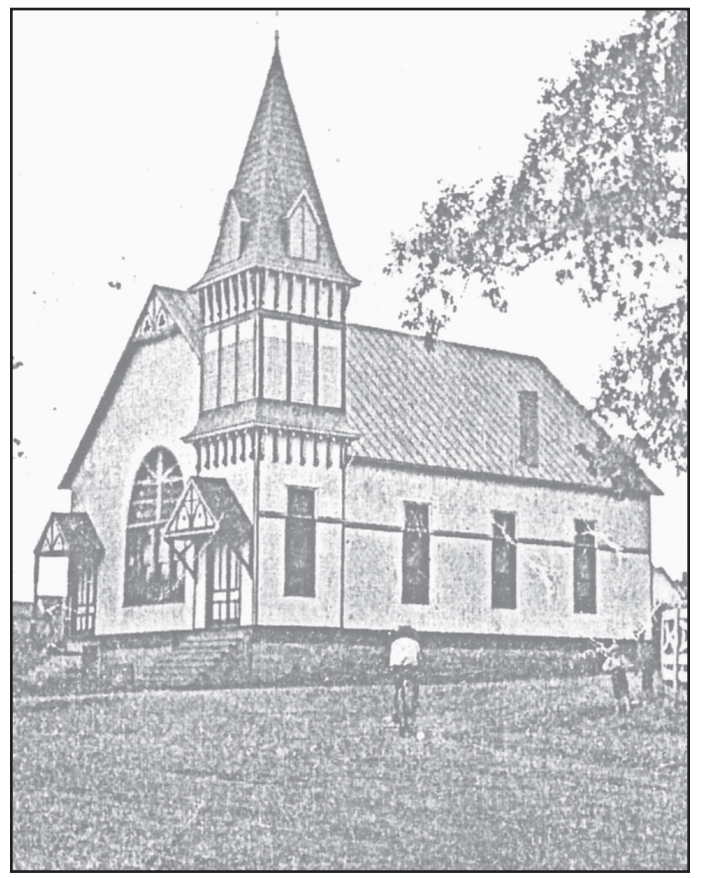
sion years of the 1930's but the debt was paid and the mortgage burned November 19, 1944 while Rev. Roy Richardson was pastor.

The role of the county's biggest church has indeed been that of a FIRST church as it has helped several smaller churches in the county. The re-establishment of the present-day Mount Carmel Church was as the result of Brother Harold Dietch, minister First Christian, who held a successful revival at Ticky Fork, then Cow Creek and Tipton Ridge where Mount Carmel is located.

First Christian has always participated with other denominations in the county as a community effort. An early document says that "First Christian Church is based upon the conviction that although we seek 'to be Christians only, we are not the only Christians.'"

### Current Information

The current pastor is Bro. Greg Humpert. Weekly services include Sunday School at 9:45, Sunday morning service at 10:45 a.m. and Sunday evening service at 6 p.m. Wednesday service begins at 6 p.m., normally preceded by a meal.



The Christian Church as it appeared in the early 1900s. (from E.C. Parks' History of Estill County)



Present-day Irvine First Christian Church



The Estill County Family Resource and Youth Service Centers extend their deepest appreciation to the First Christian Church on Main Street in Irvine for their donation of school supplies. The school supplies will help reduce learning barriers by ensuring all students have the supplies they need to be successful. The First Christian Church hosted a competition to see which side of the sanctuary would donate the most supplies. Above are pictures of the winning team! and some of their donations.

## Gladie Living Archaeology Weekend 2016

Kentucky's Native American and early pioneer days are coming back to life this coming weekend at Living Archaeology Weekend in the Red River Gorge at Gladie.

Skilled artisans from across the country will demonstrate primitive technologies and practices associated with these past cultures. The featured crafts will include toolmaking, hide tanning, spear throwing, pottery, basketry, and native cooking. Wool spinning, blacksmithing and corn grinding will be exhibited near the historic Gladie cabin.

"This two-day annual event is in its 28th year," said Wayna Adams, Forest Archaeologist with the Daniel Boone National Forest.

"Professional archaeologists and heritage preservation groups continue to support this event and recognize it as an op-

portunity to share this region's historic and prehistoric past with the general public.

A representative from the United Keetoowah Band of Cherokee Indians from Oklahoma will be at the event to represent Cherokee culture, including blow guns and Cherokee marbles. The Cherokee Tribe once inhabited areas in Kentucky and surrounding states.

On Friday, September 16 the program demonstrations are for preregistered school groups only, primarily targeting fifth grade curriculum.

"About 1,000 students from 19 schools are scheduled to attend. The students will participate in hands-on activities that provide real-life experiences," said Adams.

On Saturday, September 17 the event is open to the general public from 10 a.m. to 5 p.m. Admission is free.

# Better Banking Better Rates

1%\*  
APY

19 Month  
CD

Call or visit us today.

606-723-2139

25 River Drive, Irvine, Kentucky



Citizens  
Guaranty  
Bank



Find us on  
Facebook



Irvine • Richmond  
Berea • London

Visit Us Online at [www.MyCGB.com](http://www.MyCGB.com)

\*Minimum Balance to open and obtain Annual Percentage Yield (APY) is \$500.00. Rates and APY are accurate as of 08/31/2016 and are subject to change without notice. A penalty will be imposed for early withdrawal. Any withdrawal of principal, either partial or full, will close the account. No rate exceptions. Not available for brokers, agents and financial institutions. Fees or penalties may reduce earnings.