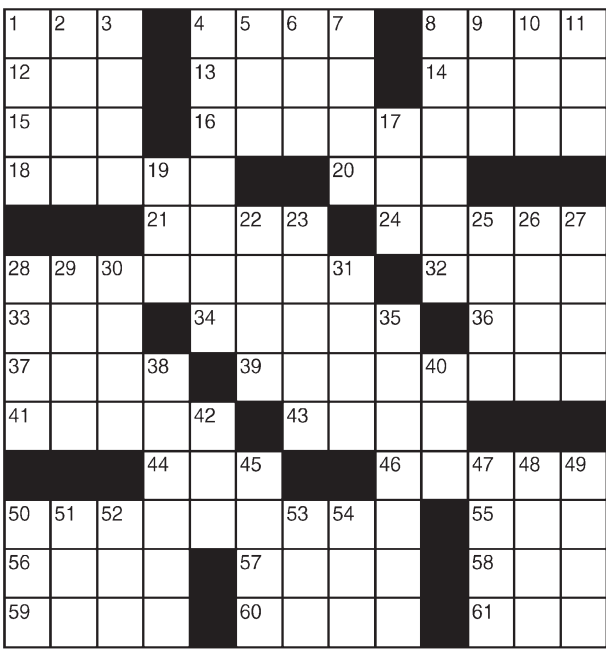


King Crossword

ACROSS

- 1 James Bond, e.g.
- 4 "Nip/—"
- 8 Pizzazz
- 12 Afternoon affair
- 13 Curved molding
- 14 San —, Italy
- 15 Grecian vessel
- 16 Diploma
- 18 Prejudiced person
- 20 Meadow
- 21 On the right track
- 24 Book of maps
- 28 "Beauty is only —"
- 32 Region
- 33 Wrestling win
- 34 Llamas' range
- 36 Set of parts
- 37 Choir voice
- 39 Chicago-style, as pizza
- 41 Rage
- 43 Unsigned (abbr.)
- 44 Favorite
- 46 Shul VIP
- 50 Exemplar of dullness
- 55 Say it's OK
- 56 On the briny
- 57 Prolonged sleep
- 58 List-ending abbr.
- 59 Feds



- 60 Animated character
- 61 "Doo" follower
- 11 — sequitur
- 17 Shell game need
- 19 Possess
- 22 Tear
- 23 Jason's wife, in myth
- 25 Norse trickster god
- 26 Blackbirds
- 27 Rogen or Meyers
- 28 Hot tubs
- 29 Scot's garment
- 30 Really enjoying
- 31 Hammerhead part
- 35 Accessory for 29-Down
- 38 Parentless
- 40 "CSI" evidence
- 42 Kitten's comment
- 45 Diplomacy
- 47 Suffered from a cut
- 48 Alpha follower
- 49 Pruritus
- 50 Hammarskjold of UN fame
- 51 Doctrine
- 52 Get a glimpse of
- 53 As well
- 54 Comedian
- 51 Phillips

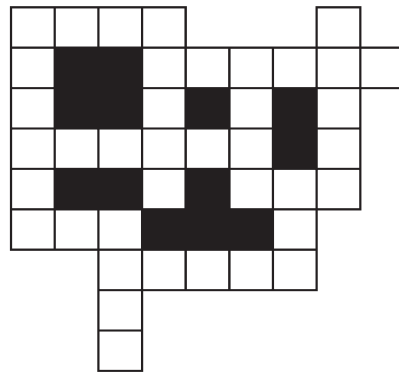
© 2017 King Features Synd., Inc.

FEAR KNOT

By: rj johnson

DOUBT? ... OR DARE!

- GWA
- GWAINY
- URVEE
- WMRA
- WIDMLE
- AYM
- GRYE
- NYGIE
- WEA
- NINDRE
- GARYN
- EMRA



Unscramble these twelve letter strings to form each into an ordinary word (ex. HAGNEC becomes CHANGE). Prepare to use only ONE word from any marked (♥) letter string as each unscrambles into more than one word (ex. ♥RATHE becomes HATER or EARTH or HEART). Fit each string's word either across or down to knot all twelve strings together.

NEW! 30 Fear Knot puzzles \$3.50 • Six Volumes • Order at rbmall.com

©2017 King Features Syndicate, Inc. All rights reserved.

Puzzles4Kids

by Helene Hovanec

WORD FUN

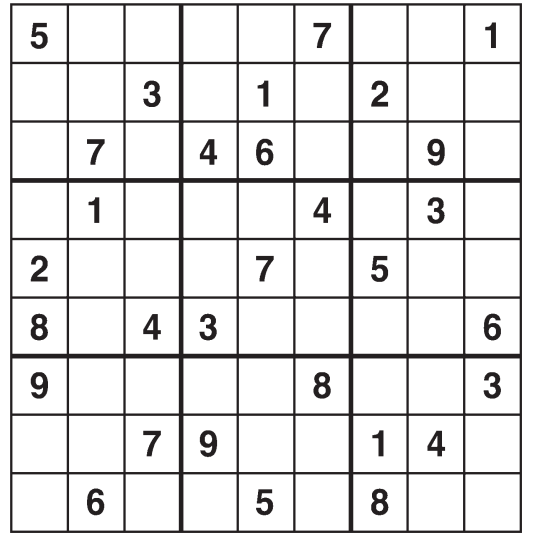
Study the two words on each line to find the ONE letter in the left column that is NOT in the word in the right column. Write the extra letter on the blank space. Then read DOWN to answer this riddle:

WHAT GAME DO BEES PLAY?

- | | | | | | |
|--------|---|-------|--------|---|-------|
| REHASH | — | HARES | ASSERT | — | RATES |
| INGEST | — | GENTS | SERENA | — | NEARS |
| VERBAL | — | BLARE | WALTER | — | TRAWL |
| STREAM | — | MARTS | BRAKES | — | SABER |
| SERIAL | — | RILES | | | |
| FASTEN | — | FEAST | | | |
| FIELDS | — | FILES | | | |

Weekly SUDOKU

by Linda Thistle



Place a number in the empty boxes in such a way that each row across, each column down and each small 9-box square contains all of the numbers from one to nine.

DIFFICULTY THIS WEEK: ♦♦

- ♦ Moderate
- ♦♦ Challenging
- ♦♦♦ HOO BOY!

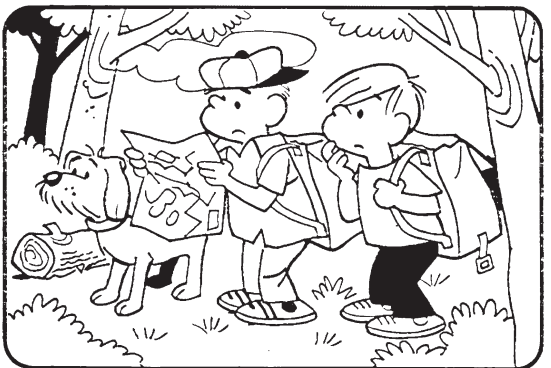
© 2017 King Features Synd., Inc.

HOCUS-FOCUS

BY HENRY BOLTIHOFF



Find at least six differences in details between panels.



Differences: 1. Dog's ear is shorter. 2. Fence hat is missing. 3. Cap is moved. 4. Walkie-talkie is missing. 5. Owl is missing. 6. Shovel is missing.

24 HOCUS FOCUS puzzles \$3.50 • 24 Volumes • Order at: rbmall.com

Just Like Cats & Dogs

by Dave T. Phipps



MAGIC MAZE — DUCK

D T Q N J G D A X U R O L J G
 D L A X V Y S P N K I F C A X
 V C A N V A S B A C K S Q O L
 J H G N I T T I S E Y C A X V
 T R P N O R R N A L V F J H F
 D B Y X I D A E A D O V F T R
 P O M K I K R D B G C E E A Y
 D B Z X W U E T N B S R I Q D
 O N L J I A D P E A U G U O D
 F D C A D Y I X R W M R O V U
 T S R P O N E M A L L W L K R

Find the listed words in the diagram. They run in all directions forward, backward, up, down and diagonally

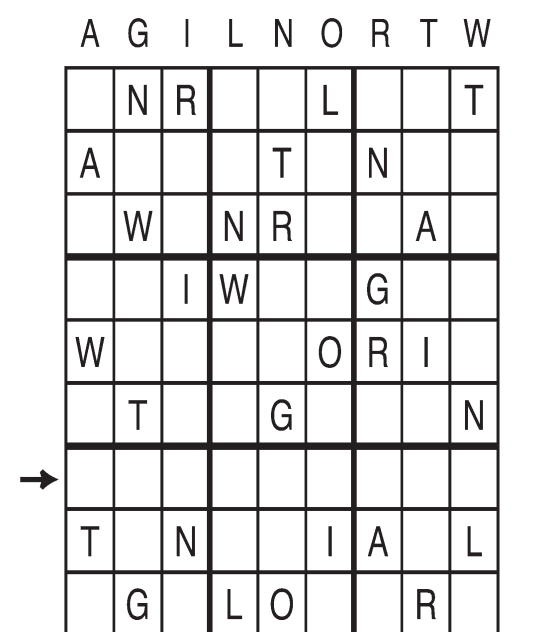
Abner	Dead	Mandarin	Ruddy
Canvasback	Donald	Muscovy	Sitting
Daffy	Eider	Peking	Wood
Daisy	Lame	Rubber	

© 2017 King Features Syndicate, Inc. All rights reserved.
 Find More Word Search Puzzles • 6 Volumes \$3.50 ea. • Order at: rbmall.com

Letter Box

by Linda Thistle

Place a letter in the empty boxes in such a way that each row across, each column down and each small 9-box square contains all of the letters listed above the diagram. When completed, the row indicated will spell out a word or words.



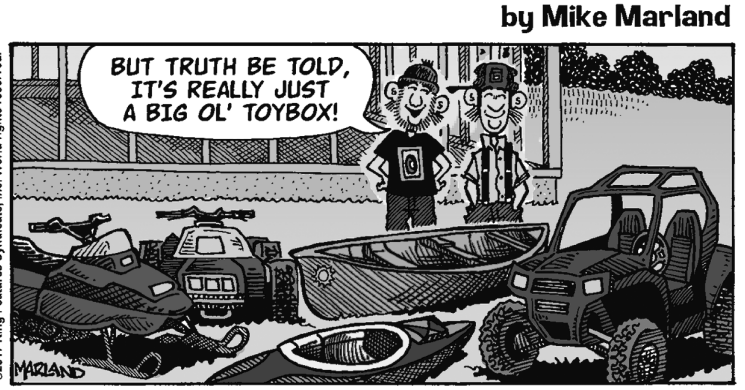
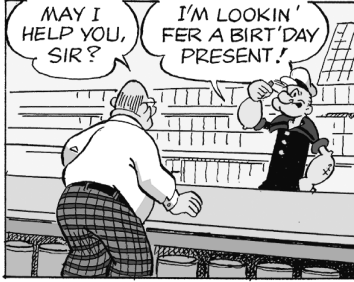
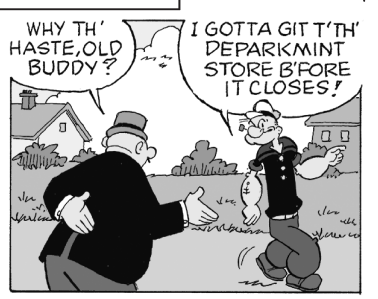
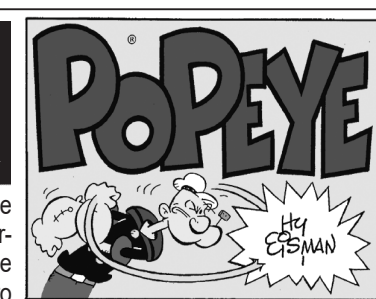
© 2010 King Features Synd., Inc.

Even Exchange

by Donna Pettman

Each numbered row contains two clues and two 6-letter answers. The two answers differ from each other by only one letter, which has already been inserted. For example, if you exchange the A from MASTER for an I, you get MISTER. Do not change the order of the letters.

- | | | | |
|----------------------|-------------|------------------|-------------|
| 1. Space vehicle | — — — — — T | Granny's chair | — — — — — R |
| 2. Backyard "carpet" | — — — — — A | Twelve dozen | — — — — — O |
| 3. Halfway | — — — — — I | Bring disorder | — — — — — U |
| 4. Intensity | — — — — — C | Fake a signature | — — — — — G |
| 5. Outspoken | V — — — — — | Homegrown | L — — — — — |
| 6. Convenient | — — — — — N | Robust | — — — — — R |
| 7. Become educated | L — — — — — | Long for | Y — — — — — |
| 8. Mitten's kin | — — — — — V | Sphere | — — — — — B |
| 9. Friendly ghost | — — — — — S | Tent vacationer | — — — — — M |
| 10. Small hill | — — — — — D | Everest or Fuji | — — — — — T |



ARIES (March 21 to April 19) You're wise to let your Arian skepticism question a former adversary's request to let bygones be bygones. Time will tell if they are trying to pull the wool over the Lamb's eyes.

TAURUS (April 20 to May 20) Congratulations. Your hard work soon pays off with some well-deserved recognition. Meanwhile, that important personal relationship needs more attention from you.

GEMINI (May 21 to June 20) That new person in your life seems trustworthy, but don't turn him or her into a confidant just yet. Remember: The secret you don't reveal is the one you won't lose sleep over.

CANCER (June 21 to July 22) Your kindness makes a difference in someone's life. But by week's end, a touch of Cancerian envy could create a problem with a colleague. Take care to keep it under control.

LEO (July 23 to August 22) A new spurt of energy sends you roaring back into that challenging work situation. But be careful not to overdo it, or your sizzle could fizzle before your task is completed.

VIRGO (August 23 to September 22) Your practical sense helps you see the logic of being a bit more flexible with a workplace colleague. But you still have a ways to go before there's a true meeting of the minds.

LIBRA (September 23 to October 22) A surprise situation could cause you to spend more money than you feel you can afford. But careful budget adjustments will help. Your fiscal picture soon brightens.

SCORPIO (October 23 to November 21) That decision you made might still have its detractors, but your supporters are growing. Meanwhile, your personal life takes on some welcome new developments.

SAGITTARIUS (November 22 to December 21) Matters of the mind intrigue the sage Sagittarian through week's end. By then, you should feel more than ready to make room for pursuits of the heart.

CAPRICORN (December 22 to January 19) The canny Capricorn can offer good counsel to others. But how about taking some advice yourself from a close friend or family member who is able and ready to help?

AQUARIUS (January 20 to February 18) A new workplace opportunity offers a variety of challenges that you might find intriguing. Best advice: Take things one step at a time so that you don't feel overwhelmed.

PISCES (February 19 to March 20) A bid to revive a relationship that ended on a bitter note needs to be carefully thought out before you can even begin to consider plunging into a new emotional commitment.

BORN THIS WEEK: You enjoy being with people, and people love being with you. You would probably do very well in politics.

©2017 King Features Syndicate, Inc. All rights reserved.

©2017 King Features Syndicate, Inc. All rights reserved.