

# King Crossword

## ACROSS

- 1 Light touch
- 4 Ducks' home
- 8 Creche trio
- 12 Swelled head
- 13 Acknowledge
- 14 Touch
- 15 Its capital is Gaborone
- 17 Give a darn
- 18 Massive weight
- 19 Mistake in print
- 21 Bouquet component
- 24 Online help page
- 25 CD- —
- 26 Badly lit
- 28 Ancient African kingdom

1	2	3	4	5	6	7	8	9	10	11	
12			13				14				
15			16				17				
		18			19		20				
21	22			23	24						
25			26		27		28		29	30	31
32			33		34		35		36		
37			38		39		40		41		
		42		43		44		45			
46	47	48			49		50				
51				52		53				54	55
56					57				58		
59				60						61	

- 56 Arp's style
- 6 Zilch
- 30 Part of the loop
- 57 Storyteller
- 7 Happy, for one
- 31 Cruising
- 58 Long sandwich
- 8 Rhesus monkey
- 33 Arranged in rows and columns
- 59 Watchful one
- 9 Blind as —
- 60 Hamburg's river
- 10 Mentor
- 35 Plagiarize
- 61 Afternoon affair
- 11 Thing
- 38 — Kippur
- 16 Boar's mate
- 40 Ripe
- 20 Skedaddled
- 43 Sacred text
- 45 Zero
- 21 "Animal House" group
- 46 Put together
- 22 See 23-Down
- 47 Vacationing
- 23 With 22-Down, John Wayne movie
- 48 Protuberance
- 49 Labor
- 53 Bill
- 27 Silent
- 54 Seek damages
- 29 Gregor Mendel, e.g.
- 55 Biz deg.

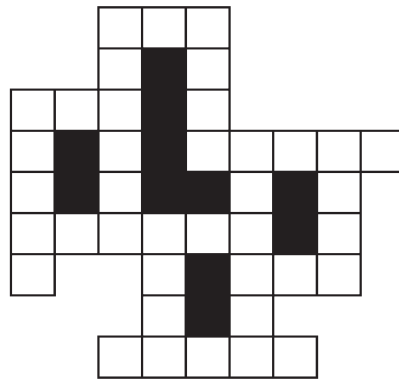
© 2018 King Features Synd., Inc.

# FEAR & KNIGHT

By: rj johnson

DOUBT? ... OR DARE!

- GJU
- GANIPY
- NYEJN
- OSTY
- LOGGIO
- UYG
- ♥GOEL
- ♥FTSFI
- ♥PTA
- NOTJAR
- UGGEA
- ♥OFGL



Unscramble these twelve letter strings to form each into an ordinary word (ex. HAGNEC becomes CHANGE). Prepare to use only ONE word from any marked (♥) letter string as each unscrambles into more than one word (ex. ♥RATHE becomes HATER or EARTH or HEART). Fit each string's word either across or down to knot all twelve strings together.

©2018 King Features Syndicate, Inc. All rights reserved.

# Weekly SUDOKU

by Linda Thistle

9	5	3	2		
3			2		6 1
	7	4	5 8		
	9 3		1	8	
8		6 4		9	
	1		9	5 3	
	2	3	6	4	
		1	7	3	6
7	6 8				5

Place a number in the empty boxes in such a way that each row across, each column down and each small 9-box square contains all of the numbers from one to nine.

## DIFFICULTY THIS WEEK: ♦

- ♦ Moderate
- ♦♦ Challenging
- ♦♦♦ HOO BOY!

© 2018 King Features Synd., Inc.

# Puzzles4Kids

by Helene Hovanec

## WORD FUN

Study the two words on each line to find the ONE letter in the left column that is NOT in the word in the right column. Write the extra letter on the blank space. Then read DOWN to answer this riddle:

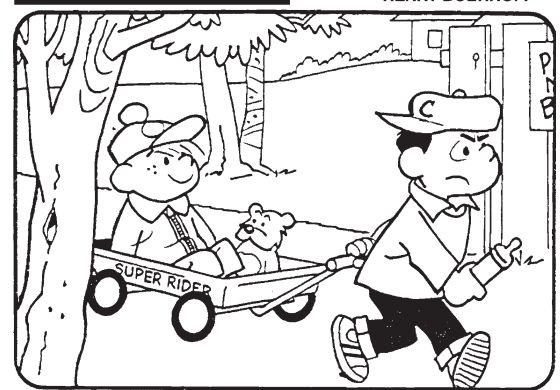
WHAT DO YOU CALL A GHOST WHO DOESN'T WANT TO WORK?

- |        |   |       |   |        |   |       |
|--------|---|-------|---|--------|---|-------|
| ALLIED | — | IDEAL | — | BEINGS | — | SINGE |
| CARSON | — | CORNS | — | VERONA | — | RAVEN |
| GRAZES | — | RAGES | — | STRAND | — | DARTS |
| PRAYED | — | PARED | — | FICKLE | — | FLICK |
|        |   |       |   | BASTES | — | BEATS |

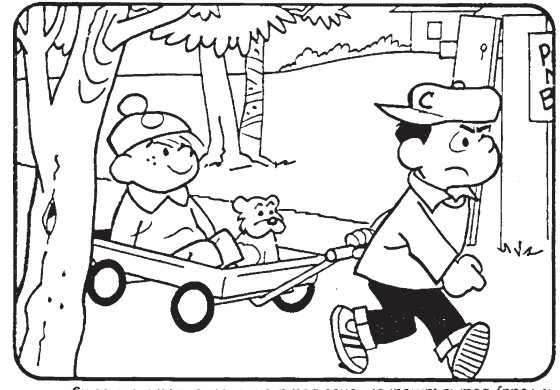
© 2018 King Features Synd., Inc.

## HOCUS-FOCUS

BY HENRY BOLTIHOFF



Find at least six differences in details between panels.



Differences: 1. Cap is different; 2. Zipper is missing; 3. Wagon name is missing; 4. Teddy bear is turned; 5. Fence board is missing; 6. Bottle is missing.

## Just Like Cats & Dogs

by Dave T. Phipps



©2018 King Features Syndicate, Inc. All rights reserved.

## Even Exchange

by Donna Pettman

Each numbered row contains two clues and two 6-letter answers. The two answers differ from each other by only one letter, which has already been inserted. For example, if you exchange the A from MASTER for an I, you get MISTER. Do not change the order of the letters.

- |                       |           |                    |           |
|-----------------------|-----------|--------------------|-----------|
| 1. Prickly sensation  | — I — — — | Hair gnarl         | — A — — — |
| 2. Building block     | — — — C — | Invigorating       | — — — S — |
| 3. Fire stone         | — — — — T | Throw with abandon | — — — — G |
| 4. Matthau or Mitty   | — — — L — | Food server        | — — — I — |
| 5. Casual pastime     | H — — — — | Hotel foyer        | L — — — — |
| 6. Wrath              | — N — — — | Boring tool        | — U — — — |
| 7. Face coloring      | — — — — E | Uneven             | — — — — H |
| 8. Wriggle            | — — — — M | Knight's assistant | — — — — E |
| 9. Opera house cheer  | — — — — O | Valiant            | — — — — E |
| 10. Clothing ensemble | — — — — F | Get the better of  | — — — — W |

© 2018 King Features Synd., Inc.

## MAGIC MAZE

THINGS WE PASS AROUND

C R O L J G D A X V S P N K I  
 F C A X V S Q O L J H E C A X  
 V T R M I C R O P H O N E P N  
 L J H F Y D B Y S T T M P T X  
 V T R S V P O M M K A I I O G  
 E D B Z A X R O R I T H P R W  
 U T R Q R E O D L E O N E C N  
 L J I G G F D S D C P T C H O  
 A Y X W V T A I S R T P A P T  
 O N E T A L P W L U O K E J A  
 I G F E T K C U B E H T P P B

Find the listed words in the diagram. They run in all directions forward, backward, up, down and diagonally

- |        |            |            |         |
|--------|------------|------------|---------|
| Baton  | Gravy      | Peace pipe | The hat |
| Butter | Hot potato | Pepper     | Torch   |
| Emails | Ideas      | Salt       | Wisdom  |
| Germ   | Microphone | The buck   |         |

©2018 King Features Syndicate, Inc. All rights reserved.

## Letter Box

by Linda Thistle

Place a letter in the empty boxes in such a way that each row across, each column down and each small 9-box square contains all of the letters listed above the diagram. When completed, the row indicated will spell out a word or words.

A	C	E	H	M	N	P	R	T
		H	M		N	C		
N	P			R			A	
	T	H					R	M
E			P				M	N
T	P		A				C	
	M		E	T	A			
H		P	R	C	A			
	N	C	T	P				

© 2011 King Features Synd., Inc.

## Salome's Stars

**ARIES** (March 21 to April 19) A colleague might offer to open a door for you professionally. But before you walk through it, be sure this "favor" isn't attached to an obligation you might find difficult to discharge.

**TAURUS** (April 20 to May 20) Your creativity, your persistence and your reliability could lead to a major career shift. Be sure to use that other Taurean trait, your practicality, when discussing what the job offers.

**GEMINI** (May 21 to June 20) A changing situation might require some adjustments you might not have been prepared to make. However, flexibility in this matter could be the best course to follow at this time.

**CANCER** (June 21 to July 22) You're in a period of fluctuating moods, which is not unusual for the Moon Child. Your emotions stabilize by the 26th. Meanwhile, try to hold off making major decisions until then.

**LEO** (July 23 to August 22) That keen sense of perception helps you hunt down those minute details that others overlook. And, of course, your Leonine ego will accept the expected praise with good grace.

**VIRGO** (August 23 to September 22) Be careful not to be confrontational when raising a work-related issue. Better to make a request than a demand. And, of course, be prepared to back up your case with facts.

**LIBRA** (September 23 to October 22) Your ego might be hurt when a colleague turns down your offer to help. But accept it as a rejection of your offer, not of you. A friend from the past could re-emerge by week's end.

**SCORPIO** (October 23 to November 21) A flow of positive energy turns a work project you didn't want to do into something you actually love doing. Now, take that attitude into your social, intimate life — and enjoy what follows.

**SAGITTARIUS** (November 22 to December 21) Working hard to meet your professional goals is fine. But don't neglect your private life, especially where it concerns your more cherished relationships.

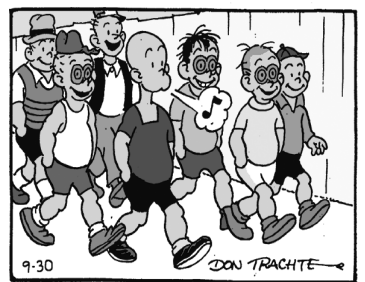
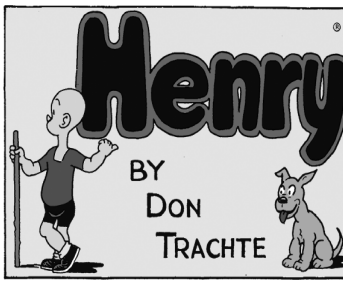
**CAPRICORN** (December 22 to January 19) "Patience" remains the key word in dealing with an emotionally sensitive situation involving a close friend or family member. Help comes your way by week's end.

**AQUARIUS** (January 20 to February 18) With new information coming in, it's a good time to rethink some of your goals without taking suggestions from others, no matter how well-meaning they might be.

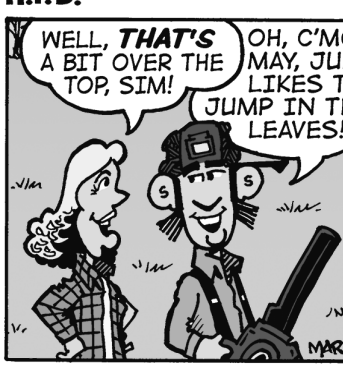
**PISCES** (February 19 to March 20) Making progress on your project is relatively easy in the early part of the week. A problem could arise midweek. But all goes swimmingly once it's resolved.

**BORN THIS WEEK:** Holding fast to your principles, no matter what, inspires others to follow your example.

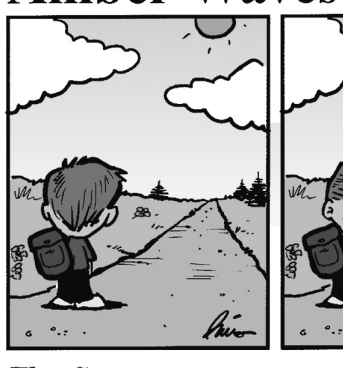
© 2018 King Features Synd., Inc.



©2018 King Features Syndicate, Inc. World rights reserved.



©2018 King Features Syndicate, Inc. World rights reserved.



©2018 King Features Syndicate, Inc. All rights reserved.



©2018 King Features Synd., Inc.