

Eric Baker
Estill County Extension
Agent for Agriculture
& Natural Resources

Brown Marmorated Stink Bug on the Move

According to UK Entomologist Ric Bessin, Brown Marmorated Stink Bug (BMSB) numbers were higher in much of the Eastern half of the state this summer than other areas. With the start of fall, they have been gathering on the sides of buildings in the afternoons on sunny days, but that is a precursor to their moving into structures. Despite their near 3/4" body size, they can squeeze through

narrow cracks around doors and windows, in siding, and in ventilation openings around roofs. They are searching for protected places to pass the winter. Once inside buildings they will remain active until mid-spring.

In addition to BMSB, we should expect several other insect invaders entering buildings, including boxelder bug, multicolor Asian lady beetle, cluster fly, and western conifer seed bug. But BMSB has the potential to gather in larger numbers in homes than these other pests. Besides just being a nuisance, BMSB releases a cilantro-like odor when disturbed and may feed on houseplants during the late winter months.

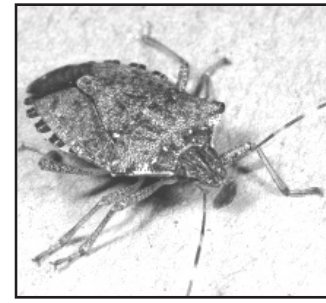
With BMSB, as with other household invaders, the best strategy is prevention: keep them out of

your home. Buildings that have large numbers gathering in the afternoon are more likely to be invaded. Seal and screen entry points to attics, around doors and windows, and to basements and crawl spaces to limit numbers that enter. You can use 1/6-inch mesh screen or finer. Topping chimneys with screens or caps can also help.

Indoors during winter, BMSB try to congregate in various places inside structures. This can be in chimneys, closets, window air conditioning units, attics, behind books on a shelf, etc. The best way to remove them once they gain entry is with a vacuum. A knee-high stocking can be used in the suction tube of the vacuum to reduce the number of vacuum bags needed. Stink bugs can be disposed of by dropping

them into soapy water. Various types of light-baited/funnel traps and soapy water traps can be used to remove them from dark areas in a home.

For more information or for insect identification, contact the Estill County Extension office at 723-4557.



Brown Marmorated Stink Bug, courtesy of Ric Bessin, UK Entomology

Educational programs of the Cooperative Extension Service serve all people regardless of economic or social status and will not discriminate on the basis of race, color, ethnic origin, national origin, creed, religion, political belief, sex, sexual orientation, gender identity, gender expressions, pregnancy, marital status, genetic information, age, veteran status, or physical or mental disability.

Kentucky Grazing Conference

KGC's "Focus is Profitability" conference is focused on turning grass into cash," said Jimmy Henning, forage extension specialist in the UK College of Agriculture, Food and Environment and conference organizer. "The program features speakers who have done this across a range of enterprises including dairy, small ruminants, and beef. In addition, the program will help producers better understand how to manage risk in grazing-based livestock enterprises."

Hosted by UK Cooperative Extension Service and the Kentucky Forage and Grassland Council, the conference will occur at the Clark County Extension office. The program will run from 7:45 a.m. until 3:30 p.m. local time.

Among the featured speakers is Howard Straub III. Straub is the manager of the Pasture Dairy Center at Michigan State University's Kellogg Biological Station. The center has 240 acres dedicated to grazing research and a milking herd of about 130 U.S. Holstein and 25 New Zealand Friesian cows. Straub will discuss the center's research on rotational grazing of perennial pastures and ways producers can incorporate alternative and complementary forages into the grazing season.

Todd Clark of Lexington will speak. He is a first-generation farmer who raises a variety of products for both commodity and local food markets on 800 acres. His operation includes broilers, layers, turkeys, grass-finished beef and lamb and vegetables.

Early registration for the conference is \$35 per person or \$50 if also renewing KFGC membership. The early registration deadline is October 22nd. Producers can register and view the agenda for the conference on the UK forages extension website at <https://forages.ca.uky.edu/>.

Farming News

from Extension Agent Eric Baker

Thursday, October 11th @ 6:00pm

Cattle Producer Meeting

The Estill County Extension Service and Estill County Cattlemen's Association will have a cattle producer meeting on Thursday, October 11th, 6:00 p.m. at the Estill County Extension office, 76 Golden Court (off Stacy Lane).

Our guest speaker will be Dr. Michelle Arnold, UK Extension ruminant veterinarian, who will give an overview of poisonous plants that impact livestock. A meal will be provided. Please pre-register by October 8th by calling 723-4557.

Stickeler's Puzzle



Using any math symbols or operations you choose, can you make four 5's equal 100?

©2018 King Features Syndicate

Stickeler's Answer on Page 11

The Garden Bug



A handsome evergreen shrub that blooms in the fall, this plant (*Gordonia lasianthus*) gets its common name from its flowers, which have fluffy, bright-yellow centers amid five white, round petals. It grows well in the acidic, swampy soils of the southeastern United States. When cut, its wood exudes a scent like fresh oranges and pine sap.

Sources:
www.topdreamer.com,
wikipedia.org,
www.gardenclinic.com

- Brenda Weaver

Birding BITS BY Cindy Brook

Nighttime Listening

Nocturnal birds serve their purpose. They add to the ambiance that is night. What would an orchestra of crickets be without the steady call of a whip-poor-will? I will climb out of sleep to listen to a barred owl. Day or night, birds are great!

E-mail: birdingbits@clrr.com
©2015 King Features Syndicate, Inc.

Wishing Well®

2	8	7	2	3	5	2	6	8	2	5	3	6
D	T	P	O	L	H	C	T	H	U	A	O	R
4	5	8	5	8	7	4	7	3	4	2	3	7
J	B	I	I	N	L	O	A	O	B	M	K	N
3	8	4	3	6	3	2	3	2	3	8	3	8
T	K	I	O	Y	T	E	H	N	E	B	F	E
5	4	8	7	8	6	3	2	4	8	2	5	6
T	M	F	C	O	H	U	T	P	R	I	S	A
3	7	2	3	8	7	8	5	8	2	3	7	8
T	A	D	U	E	R	Y	I	O	E	R	E	U
3	7	2	7	4	8	2	7	6	4	7	8	6
E	F	A	U	R	A	S	L	R	O	L	C	D
8	5	7	6	4	5	4	5	4	5	6	5	5
T	M	Y	E	V	P	E	R	S	O	R	V	E

HERE IS A PLEASANT LITTLE GAME that will give you a message every day. It's a numerical puzzle designed to spell out your fortune. Count the letters in your first name. If the number of letters is 6 or more, subtract 4. If the number is less than 6, add 3. The result is your key number. Start at the upper left-hand corner and check one of your key numbers, left to right. Then read the message the letters under the checked figures give you.

©2018 King Features Syndicate, Inc. All rights reserved.

CryptoQuip

This is a simple substitution cipher in which each letter used stands for another. If you think that X equals O, it will equal O throughout the puzzle. Solution is accomplished by trial and error.

Clue: P equals S

VDMP ABMUNMUK XHPPHQ MP UTV

QMNH YUZ VDYV M'XH HXHB PHHU

IHGTHB. MV'P AHGMUMVHQZ

MU Y KQYPP IZ MVPHQG.

©2018 King Features Synd., Inc.

CryptoQuote

AXYDLBAAXR
is LONGFELLOW

One letter stands for another. In this sample, A is used for the three L's, X for the two O's, etc. Single letters, apostrophes, the length and formation of the words are all hints. Each week the code letters are different.

N FLACM CX XGL XHD CMT

N'ZL FLLM UHESNMA VI

UCI THUM LZLE PNMOL.

- HEPHM ULKKLP

©2018 King Features Synd., Inc.

Puzzle Answers

October 10, 2018

Puzzles4Kids

Answer

ALLIED L IDEAL
CARSON A CORNS
GRAZES Z RAGES
PRAYED Y PARED

BEINGS B SINGE
VERONA O RAVEN
STRAND N DARTS
FICKLE E FLICK
BASTES S BEATS

Letter Box

Solution

A	R	H	M	E	N	C	T	P
N	P	M	T	R	C	H	A	E
C	T	E	H	A	P	N	R	M
E	C	A	R	P	H	T	M	N
T	H	P	N	M	A	R	E	C
R	M	N	E	C	T	A	P	H
P	A	R	C	H	M	E	N	T
H	E	T	P	N	R	M	C	A
M	N	C	A	T	E	P	H	R

THINGS WE PASS AROUND

M I C R O P H O N E
S V M A I O
A R O R I T H P R
R E D L E O E C N
G D S P T C H O T
A U T P A T
L W U O E A
T K C U B E H T P P B

CryptoQuip

answer
This drinking vessel is not like any that I've ever seen before. It's definitely in a glass by itself.

CryptoQuote

answer
I began at the top and I've been working my way down ever since.
- Orson Welles

FEAR & KNIGHT

answer

P	A	T
A	O	
G	U	Y
A	I	S
U	N	R
G	I	G
E	G	J
L	A	
J	E	N
E	N	N

Even Exchange

answers

1. Tingle, Tangle
2. Brick, Brisk
3. Flint, Fling
4. Walter, Waiter
5. Hobby, Lobby
6. Anger, Auger
7. Rouge, Rough
8. Squirm, Squire
9. Bravo, Brave
10. Outfit, Outwit

Weekly SUDOKU

Answer

9	6	5	1	3	8	2	7	4
3	4	8	9	2	7	5	6	1
1	7	2	4	6	5	8	3	9
6	9	3	2	5	1	4	8	7
8	5	7	6	4	3	9	1	2
2	1	4	7	8	9	6	5	3
5	2	9	3	1	6	7	4	8
4	8	1	5	7	2	3	9	6
7	3	6	8	9	4	1	2	5

King Crossword

Answers

Solution time: 25 mins.
D A B P O N D M A G I
E G O A V O W A B U T
B O T S W A N A C A R E
T O N E R R A T U M
F L O W E R F A Q
R O M D I M N U B I A
A B E T O U R E O N S
T O D A Y M O M T O E
B O B B A N A N A
M A N U M I T T I N
A W O L B O T U L I S M
D A D A L I A R S U B
E Y E R E L B E T E A

Bible Trivia Answers

Now available by Wilson Casey! 2017 Bible Trivia box calendar loaded with daily teasers.

John the Baptist; (3) Be born again; (4) 7 days; (5) ANSWERS (1) Neither; (2)

Century 21
Advantage Realty,
a Robinson Company

The highest compliment my clients can give me is the referral of their friends, family and business partners.



WILLIS ESTES
Associate Broker
Cell: 859-582-3731
westes@century21advantage.com
Serving Estill County over 18 Years

Thank you!