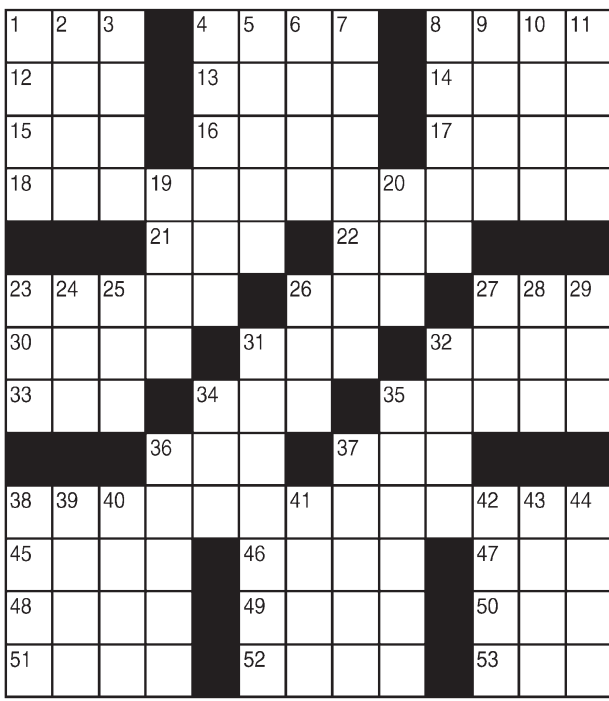


King Crossword

ACROSS

- 1 Sheepish remark
- 4 Temperate
- 8 Pull an all-nighter
- 12 Abrade
- 13 Garfield's pal
- 14 Apiary structure
- 15 Galena or cinabar
- 16 Cribs
- 17 Tarzan's clique
- 18 Dismissal
- 21 Chicken-king link
- 22 Donkey
- 23 Recurring sequence of events
- 26 Try the tea
- 27 Time of your life?
- 30 Libertine
- 31 It holds the mayo
- 32 Just one of those things
- 33 "Uh-huh"
- 34 Cover
- 35 - apso
- 36 Collection
- 37 The Red or the Black
- 38 Subjects of discussion
- 45 Birthright barterer
- 46 Tiger Woods' ex



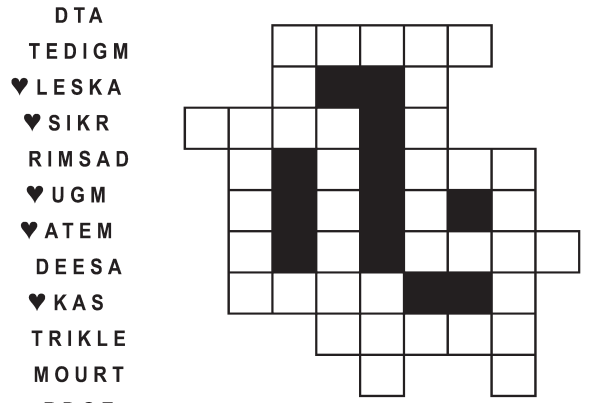
- 47 Curved path
 - 48 Autograph
 - 49 Bigfoot's cousin
 - 50 By way of
 - 51 To-do list
 - 52 Kernel
 - 53 Way off
- DOWN**
- 1 Forehead
 - 2 Atmosphere
 - 3 First victim
 - 4 Alabama city
 - 5 Menzel of Broadway
 - 6 TV journalist Lisa
 - 7 Woe
 - 8 Cowboy wear
 - 9 Mature
 - 10 State
 - 11 Disarray
 - 19 Hardy cabbage
 - 22 Weep
 - 23 Thee
 - 24 Coffee container
 - 26 Blue
 - 27 "Eureka!"
 - 28 Petrol
 - 29 Greek H
 - 31 Small buses
 - 32 Siamese, today
 - 34 Mainlander's memento
 - 35 Nikita's successor
 - 36 Polecat
 - 37 Malice
 - 38 Criterion
 - 39 Largest of the seven
 - 40 Trails the pack
 - 41 Merriment
 - 42 Almost black
 - 43 Small combo
 - 44 Read bar codes

© 2018 King Features Synd., Inc.

FEAR & KNOT

By: rj johnson

DOUBT? ... OR DARE!

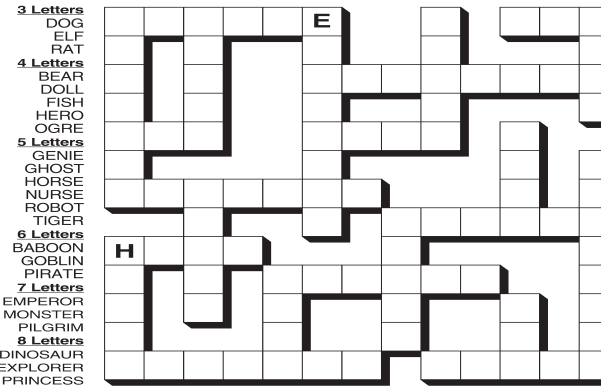


Unscramble these twelve letter strings to form each into an ordinary word (ex. HAGNEC becomes CHANGE). Prepare to use only ONE word from any marked (♥) letter string as each unscrambles into more than one word (ex. ♥RATHE becomes HATER or EARTH or HEART). Fit each string's word either across or down to knot all twelve strings together.

Puzzles4Kids

by Helene Hovanec

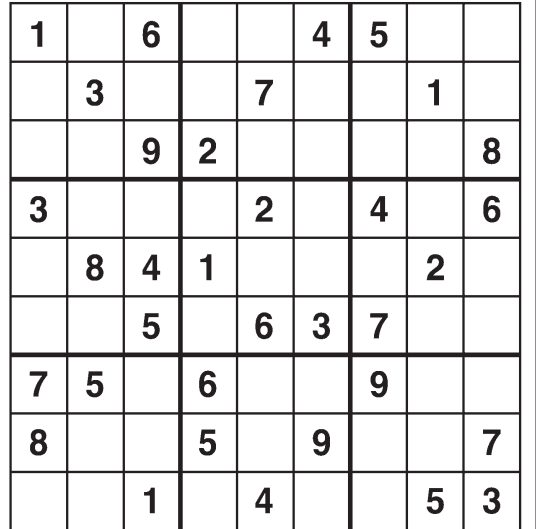
CRISSCROSS - HALLOWEEN COSTUME CHOICES
Each word will fit into one spot in the grid. Use the starting letters as a guide and fit each word into its spot. All words will be used, so cross off each one after you put it into the grid.



© 2018 King Features Synd., Inc.

Weekly SUDOKU

by Linda Thistle



Place a number in the empty boxes in such a way that each row across, each column down and each small 9-box square contains all of the numbers from one to nine.

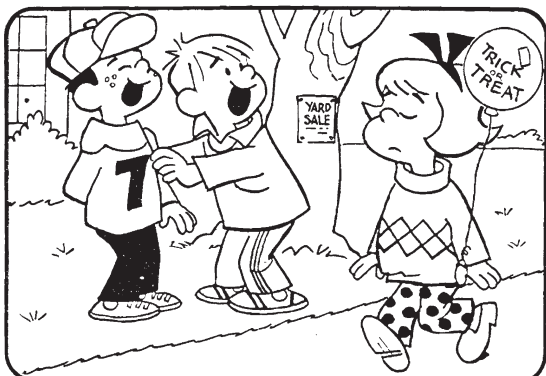
DIFFICULTY THIS WEEK: ♦

- ♦ Moderate
- ♦♦ Challenging
- ♦♦♦ HOO BOY!

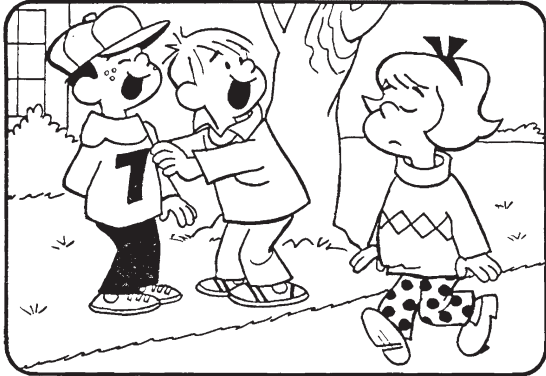
© 2018 King Features Synd., Inc.

HOCUS-FOCUS

BY HENRY BOLTINOFF



Find at least six differences in details between panels.



Differences: 1. Cap is missing; 2. Sign is different; 3. Sign is missing; 4. Bow tie is missing; 5. Balloon is missing; 6. Sweater design is different.

Just Like Cats & Dogs

by Dave T. Phipps



© 2018 King Features Synd., Inc.

MAGIC MAZE ● SHOPPING FOR A COWBOY



Find the listed words in the diagram. They run in all directions forward, backward, up, down and diagonally

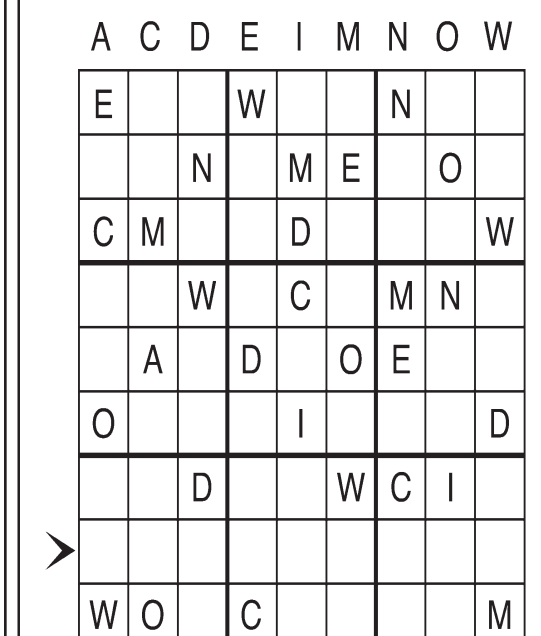
- Bandana
- Bedroll
- Blanket
- Boots
- Bridle
- Chaps
- Cowboy hat
- Holster
- Horse
- Levi's
- Rifle
- Saddle
- Spurs
- Tin plate
- Vest

© 2018 King Features Syndicate, Inc. All rights reserved.

Letter Box

by Linda Thistle

Place a letter in the empty boxes in such a way that each row across, each column down and each small 9-box square contains all of the letters listed above the diagram. When completed, the row indicated will spell out a word or words.



© 2011 King Features Synd., Inc.

Even Exchange

by Donna Pettman

Each numbered row contains two clues and two 6-letter answers. The two answers differ from each other by only one letter, which has already been inserted. For example, if you exchange the A from MASTER for an I, you get MISTER. Do not change the order of the letters.

- | | | | |
|----------------------|---------------|----------------------|---------------|
| 1. Make amends | — T — — — | Solo | — L — — — |
| 2. Bowling score | — — — — K — | Pace | — — — — D — |
| 3. Crystal | — — — — A — — | Luster | — — — — O — — |
| 4. Bordeaux's nation | F — — — — | Hypnotic state | T — — — — |
| 5. Lie in the mud | — — — — — W — | Thwack | — — — — — P — |
| 6. Bracelet ornament | — — — — — M — | Graph | — — — — — T — |
| 7. Fair-haired one | — — — — — O — | Tasteless | — — — — — A — |
| 8. Fence post | — — — — — I — | Sachet | — — — — — A — |
| 9. Long sword | — — — — — A — | No longer inebriated | — — — — — O — |
| 10. Pounding tool | — — — — — M — | Clothes basket | — — — — — P — |

© 2018 King Features Synd., Inc.

Salome's Stars

ARIES (March 21 to April 19) You enjoy the attention early in the week, but it might be a good idea to opt for some privacy by week's end so that you can have more time to consider an upcoming decision.

TAURUS (April 20 to May 20) You unearth some surprising facts. Now you need to consider how to use them to your advantage. Meanwhile, it might be best to keep what you've learned secret for now.

GEMINI (May 21 to June 20) A comment by a colleague piques your curiosity to know more. Best advice: You'll find people more likely to offer information if you're discreet when making your inquiries.

CANCER (June 21 to July 22) Your energy levels begin to rise by midweek. This allows you to catch up with your heavy workload and still have plenty of get-up-and-go to go out on the town this weekend.

LEO (July 23 to August 22) You're probably roaring your head off about a perceived slight from a longtime critic. Ignore it. That person might just be trying to goad you into doing something you might later regret.

VIRGO (August 23 to September 22) The early part of the week is open to spontaneity. Then it's time to settle into your usual routine to get all your tasks done. A personal situation could require more attention from you.

LIBRA (September 23 to October 22) A meeting of the minds on a workplace project might well develop into something more personal for Librans looking for romance. Aspects also are favorable for platonic relationships.

SCORPIO (October 23 to November 21) A more-positive mood might be difficult to assume in light of a recent problem involving the health of someone special. But by week's end, your emotional barometer should start to rise.

SAGITTARIUS (November 22 to December 21) Look for a changed attitude from a former adversary once he or she realizes you have your colleagues' full support. Now you can refocus your energies on that workplace project.

CAPRICORN (December 22 to January 19) This time, a difference of opinion might not be resolved in your favor. But be patient. It could all ultimately work out to your advantage, as new information begins to develop.

AQUARIUS (January 20 to February 18) A tug of war develops between the artistic Aquarian's creative aspect and his or her practical side. Best advice: Prioritize your schedule so you can give appropriate time to both.

PISCES (February 19 to March 20) You could be entering a career phase awash with job-related demands. But avoid being swamped by the overflow and, instead, keep treading water as you deal with demands one by one.

BORN THIS WEEK: You are an exceptionally loyal person, and you're respected for your ability to keep the secrets entrusted to you.

© 2018 King Features Synd., Inc.

Henry

BY DON TRACHTE



R.F.D.

WE CALL IT "ZOMBIE" APLUMPKINLYPSE.



Amber Waves

COME ON, YOU CALL THAT ROUGHING THE PASSER? HE BARELY TOUCHED HIM!



THESE NEW RULES ARE RUINING FOOTBALL. YOU CAN'T EVEN TACKLE ANYONE.



THEY JUST WANNA MAKE IT SAFER. YOU DON'T WANT TO HURT AN OPPONENT?



The Spats

CAN YOU PICK UP SOME PIZZA TONIGHT?



SURE.



GOOD, I DROPPED ONE ON THE KITCHEN FLOOR.



© 2018 King Features Synd., Inc.