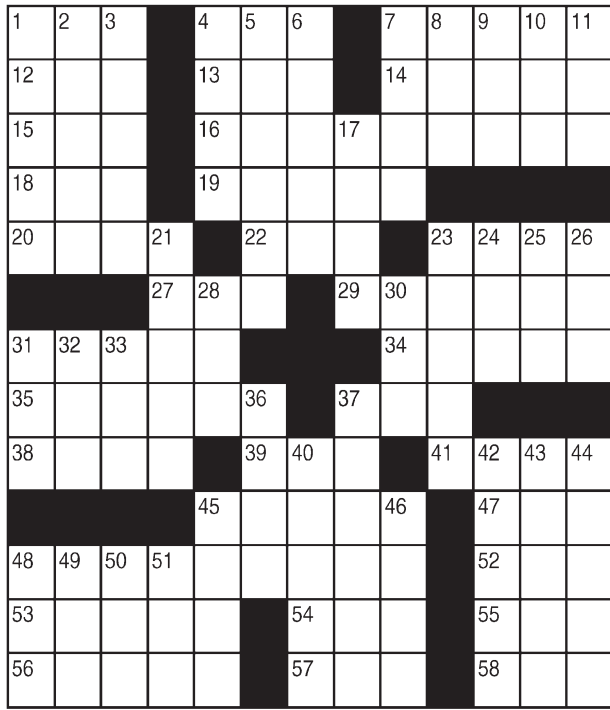


# King Crossword

**ACROSS**

- 1 Cleo's slayer
- 4 — de deux
- 7 Ornamental loop
- 12 Neither mate
- 13 Performance
- 14 Wahine's greeting
- 15 Excessively
- 16 Intercom speaker
- 18 "— Impossible"
- 19 African capital
- 20 At the home of (Fr.)
- 22 "— be an honor"
- 23 Maja painter
- 27 Table scrap
- 29 Luxury stadium seating
- 31 Italian isle
- 34 Put one's two cents in
- 35 Fridge
- 37 Insult (Sl.)
- 38 Ten (Pref.)
- 39 Anger
- 41 Vacillate
- 45 Foolish
- 47 Chaps
- 48 Chest for money
- 52 Type measures
- 53 Minimum
- 54 Corroded
- 55 "Gosh!"



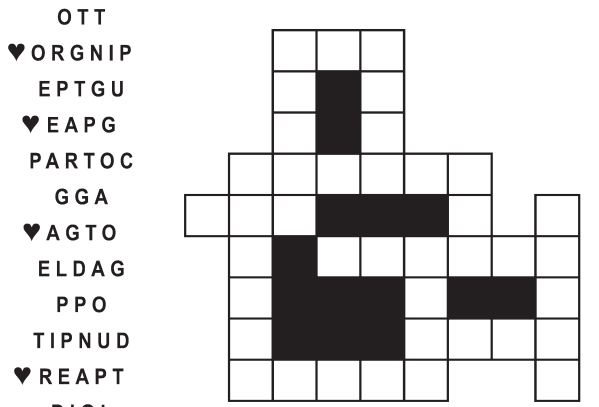
- 56 "Whoopie!"
- 57 Sleuth
- 58 Pismire
- DOWN**
- 1 Caper
- 2 Start for "sayer"
- 3 Regular writing history
- 4 History
- 5 Find not guilty
- 6 Action-film sequence
- 7 Fido's feet
- 8 Sort
- 9 Corn castoff
- 10 "So that's it, eh?"
- 11 Earner's burden
- 17 Helps
- 21 1964 Anthony Quinn role
- 22 "Everything's Coming Up Roses" musical
- 24 Sapporo sash
- 25 Thither
- 26 Lumberjack's prop
- 28 Carnival site
- 30 Pond carp
- 31 Spanish literary hero
- 32 Expert
- 33 Chest muscle, for short
- 36 Intersection, on signs
- 37 Indicate
- 40 Moroccan city
- 42 Last letter
- 43 Mideastern land
- 44 Beginning
- 45 Division word
- 46 CEO, e.g.
- 48 Crafty
- 49 Earl Grey, e.g.
- 50 "Go, team!"
- 51 Bear, in Barcelona

© 2018 King Features Synd., Inc.

# FEAR & KNIGHT

By: rj johnson

DOUBT? ... OR DARE!



Unscramble these twelve letter strings to form each into an ordinary word (ex. HAGNEC becomes CHANGE). Prepare to use only ONE word from any marked (♥) letter string as each unscrambles into more than one word (ex. ♥RATHE becomes HATER or EARTH or HEART). Fit each string's word either across or down to knot all twelve strings together.

# Puzzles4Kids

by Helene Hovanec

## CODED RIDDLE

Change each letter to the one that comes immediately BEFORE it in the alphabet to find a riddle and its answer.

Here's a copy of the alphabet to guide you:

ABCDEFGHIJKLMNOPQRSTUVWXYZ

IPX EP XJUDIFT TUBZ JO

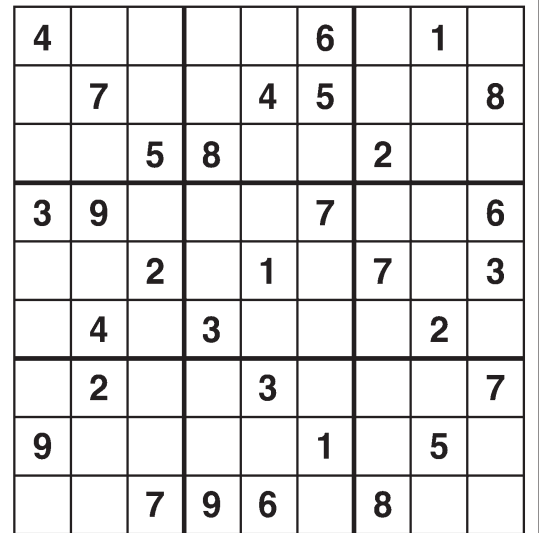
TVDI HPPE TIBQF? UIFZ EP

MPUT PG IFY-FYFSDJTF

© 2018 King Features Synd., Inc.

# Weekly SUDOKU

by Linda Thistle



Place a number in the empty boxes in such a way that each row across, each column down and each small 9-box square contains all of the numbers from one to nine.

**DIFFICULTY THIS WEEK:** ♦♦♦

♦ Moderate ♦♦ Challenging  
♦♦♦ HOO BOY!

© 2018 King Features Synd., Inc.

# Just Like Cats & Dogs

by Dave T. Phipps



# Even Exchange

by Donna Pettman

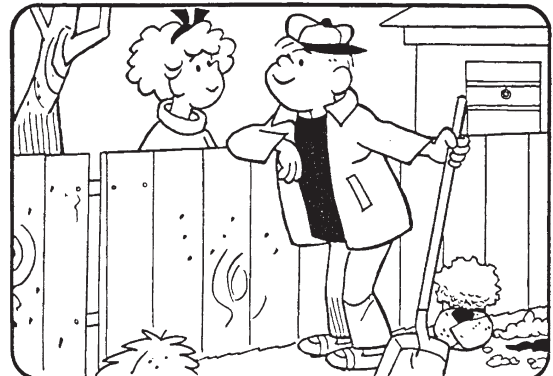
Each numbered row contains two clues and two 6-letter answers. The two answers differ from each other by only one letter, which has already been inserted. For example, if you change the A from MASTER for an I, you get MISTER. Do not change the order of the letters.

- |                      |               |                    |               |
|----------------------|---------------|--------------------|---------------|
| 1. Dollywood host    | _____ T _____ | Exoneration        | _____ D _____ |
| 2. Sink              | _____ N _____ | Straightforward    | _____ C _____ |
| 3. Heated up         | _____ M _____ | Distorted          | _____ P _____ |
| 4. Compassion        | _____ C _____ | Jolly              | _____ R _____ |
| 5. Baseball official | U _____       | King's realm       | E _____       |
| 6. Military student  | _____ D _____ | "Insert here" mark | _____ R _____ |
| 7. Kindling          | _____ I _____ | Kind and gentle    | _____ E _____ |
| 8. Every 24 hours    | _____ A _____ | Lacy cloth         | _____ O _____ |
| 9. Provide evidence  | _____ V _____ | Writing style      | _____ S _____ |
| 10. Consecrate       | _____ E _____ | Heavenly joy       | _____ I _____ |

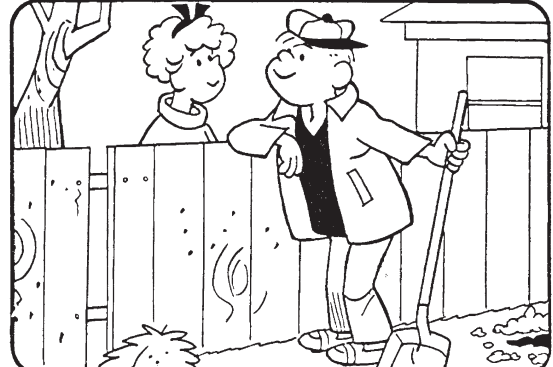
© 2018 King Features Synd., Inc.

# HOCUS-FOCUS

BY HENRY BOLTINOFF



Find at least six differences in details between panels.



Differences: 1. Fence opening is wider. 2. Hair is different. 3. Neckline is different. 4. Arm is missing. 5. Window shade is missing. 6. Strud is missing.

# MAGIC MAZE

● INVENTED 1900-1909

D Q O M K S Z I G E C A Y W L  
 U R A N O S E E S Q P N L I J  
 T H O F E C A K P Y X V E T U  
 E R O T C A R T A P S D E H S  
 A T E N A H P O L L E C D G N  
 B A I R P L A N E T F L O I O  
 A Q P L N M A K E J H N I L Y  
 G F E HELICOPTER N A  
 S C B Z Y K T X S V U T T O R  
 R Q P O M O A L K E I H G E C  
 R O Z A R A E B Y D D E T N E

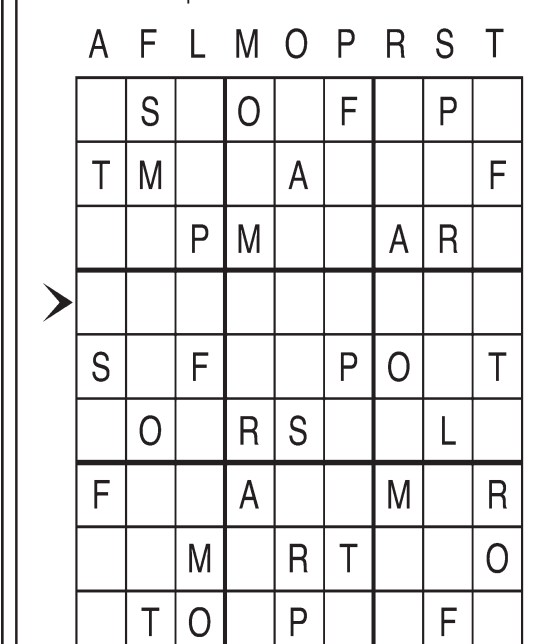
- Find the listed words in the diagram. They run in all directions forward, backward, up, down and diagonally
- |            |              |            |          |
|------------|--------------|------------|----------|
| Airplane   | Crayons      | Neon light | Tractor  |
| Bakelite   | Escalator    | Sonar      | Triode   |
| Cellophane | Helicopter   | Tea bags   | Zeppelin |
| Cornflakes | Lie detector | Teddy bear |          |

© 2018 King Features Syndicate, Inc. All rights reserved.

# Letter Box

by Linda Thistle

Place a letter in the empty boxes in such a way that each row across, each column down and each small 9-box square contains all of the letters listed above the diagram. When completed, the row indicated will spell out a word or words.



© 2011 King Features Synd., Inc.

# Salome's Stars

**ARIES** (March 21 to April 19) The high standards you set for yourself don't always translate into the behavior you expect of others. That relationship problem can be resolved if you're more flexible and less judgmental.

**TAURUS** (April 20 to May 20) Not enough party bids to satisfy the Bovine's fun-loving side this week? Go ahead and throw one of your own. Then prepare for some serious work coming up early next week.

**GEMINI** (May 21 to June 20) A new and intensely productive cycle is about to kick in. Be careful not to get too stressed out, though. Make time to restore your energies by relaxing with family and friends.

**CANCER** (June 21 to July 22) This could be a good time to share some of your plans with those closest to you. Their comments could give you some added insight into how you might accomplish your goals.

**LEO** (July 23 to August 22) An attack of self-doubt might be unsettling for the usually super-assured Feline. But it could be your inner voice telling you to hold off implementing your plans until you've reassessed them.

**VIRGO** (August 23 to September 22) This is a great time for you to reward yourself for all your hard work by taking a trip you haven't spent months carefully planning, to somewhere you never thought you'd be going.

**LIBRA** (September 23 to October 22) Some misunderstandings resist being resolved. But your sincerity in wanting to soothe those hurt feelings wins the day. By month's end, that relationship should begin to show signs of healing.

**SCORPIO** (October 23 to November 21) A hectic job schedule begins to ease just in time to blow off all that work-generated steam on Halloween. A family situation runs into an unexpected complication.

**SAGITTARIUS** (November 22 to December 21) A cutting remark in the workplace needs to be handled with finesse. Remember: How you respond could determine the depth of support you gain from colleagues.

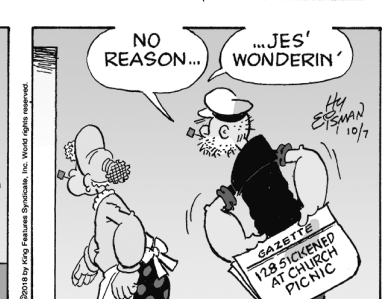
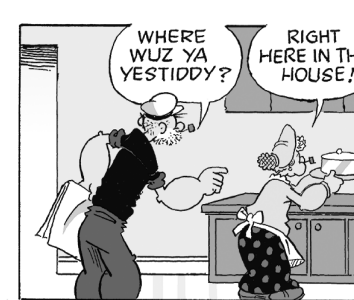
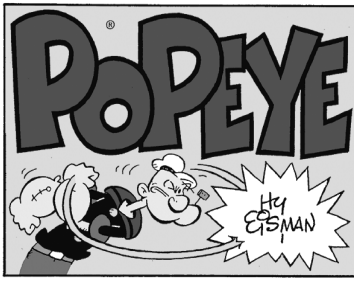
**CAPRICORN** (December 22 to January 19) Once again, that Capricornian stubborn streak sets in and could keep you from getting much-needed advice. Fortunately, it lifts by week's end, in time to make an informed decision.

**AQUARIUS** (January 20 to February 18) A surprise trip early in the week could lead to other unexpected offers when you return. Word to the wise: Avoid talking too much about this until you've made some decisions.

**PISCES** (February 19 to March 20) Learning dominates the week for perspicacious Pisceans, who are always looking to widen their range of knowledge. A series of important job-linked commitments begins late in the week.

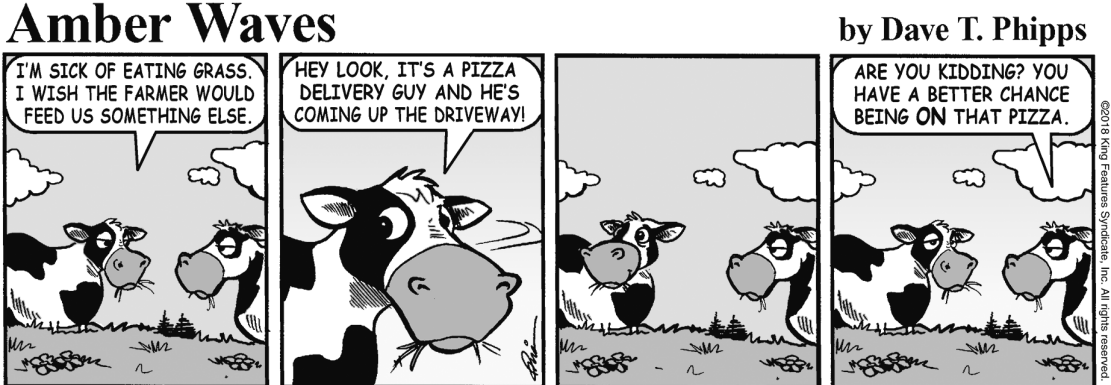
**BORN THIS WEEK:** Your sense of humor generates good feelings and good will everywhere you go.

© 2018 King Features Synd., Inc.



# R.F.D.

by Mike Marland



# Amber Waves

by Dave T. Phipps



© 2018 King Features Syndicate, Inc. All rights reserved.

© 2018 King Features Synd., Inc.