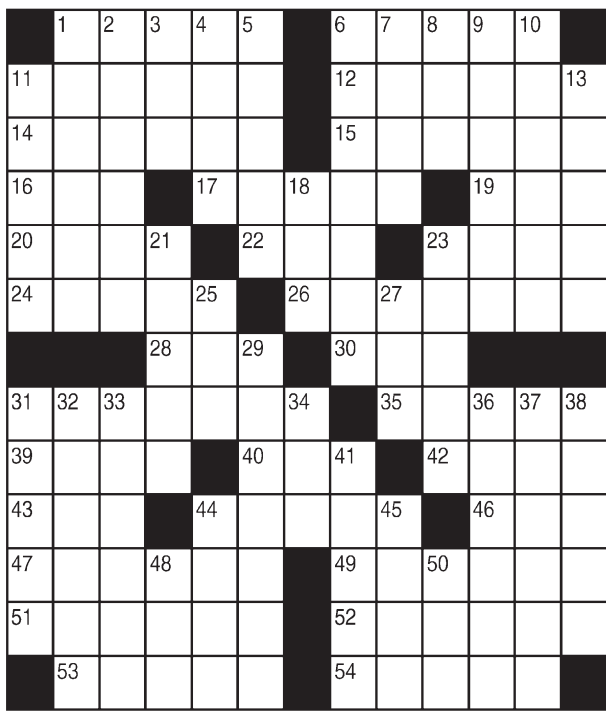


# King Crossword

**ACROSS**

- 1 Yard activities
- 6 Measuring device
- 11 Wig
- 12 Show up
- 14 Hang around
- 15 Vocalist
- 16 Big bother
- 17 Formal pronouncements
- 19 Yoko of music
- 20 Spill the beans
- 22 Bear hair
- 23 Coaster
- 24 Black-and-white movie, e.g.
- 26 90210, for one
- 28 Always, in verse
- 30 Mongrel
- 31 Sways from side to side
- 35 "Gone With the Wind" star
- 39 Look lasciviously
- 40 Three-man vessel?
- 42 Intend
- 43 Grazing area
- 44 Filleted
- 46 Suitable
- 47 Identify
- 49 Sarcastic remark
- 51 Stag's lack



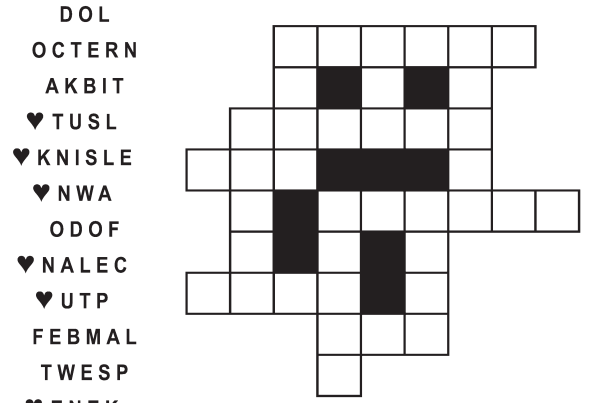
- 52 With malice
- 53 Butcher's wares
- 54 Keglers' venue
- 9 51-Across of a sort
- 10 Tied
- 11 "The Republic" man
- 13 Wear away
- 18 Since, slangily
- 21 Belgian city
- 23 "Get lost!"
- 25 Conger or moray
- 27 Boxer
- 29 Cutting responses
- 31 "Look Homeward,
- 32 Anti-elderly bias
- 33 Quick look
- 34 Baltimore newspaper
- 36 Snoopy, e.g.
- 37 Boutonnieres' sites
- 38 Access
- 41 Watch-crystal holder
- 44 Ernie's pal
- 45 Prima donna
- 48 — long way (last)
- 50 Diarist Anaïs

© 2018 King Features Synd., Inc.

# FEAR & KNIGHT

By: rj johnson

DOUBT? ... OR DARE!



Unscramble these twelve letter strings to form each into an ordinary word (ex. HAGNEC becomes CHANGE). Prepare to use only ONE word from any marked (♥) letter string as each unscrambles into more than one word (ex. ♥RATHE becomes HATER or EARTH or HEART). Fit each string's word either across or down to knot all twelve strings together.

# Puzzles4Kids

by Helene Hovanec

## CODED RIDDLE

Change each letter to the one that comes immediately BEFORE it in the alphabet to find a riddle and its answer.

Here's a copy of the alphabet to guide you:

ABCDEFGHIJKLMNOPQRSTUVWXYZ

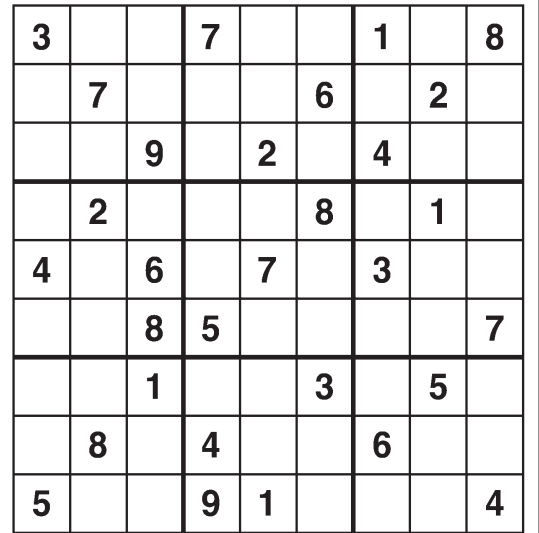
XIBU EP ZPV DBMM B TBOUB

XIP IBT OP NPOFZ?

TBJOU OJDLFM MFTT.

# Weekly SUDOKU

by Linda Thistle



Place a number in the empty boxes in such a way that each row across, each column down and each small 9-box square contains all of the numbers from one to nine.

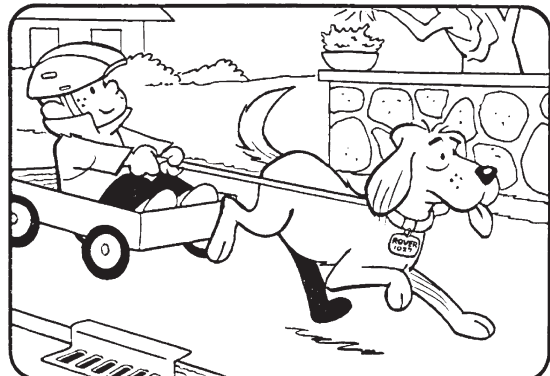
## DIFFICULTY THIS WEEK: ♦♦

♦ Moderate ♦♦ Challenging  
♦♦♦ HOO BOY!

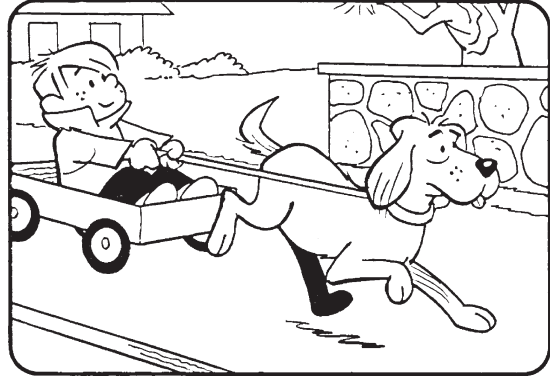
© 2018 King Features Synd., Inc.

# HOCUS-FOCUS

BY HENRY BOLTINOFF



Find at least six differences in details between panels.



Differences: 1. Helmet is missing; 2. Drain is missing; 3. Tail is shorter; 4. Flower pot is missing; 5. License tag is missing; 6. Tongue is smaller.

# Just Like Cats & Dogs

by Dave T. Phipps



## MAGIC MAZE ● GOOD —

H Q N K H E B Y V S P M J H E  
 B Y V T Q O L I G D B Y W T R  
 P M K I F F D G B Y W U S Q O  
 M K I M O R N I N G F D G B Z  
 X W U Y S I O Q O N R K N L J  
 H F D C N D A I Y W O V I T S  
 Q P N E N A D L V O M K D R I  
 H F V E E Y P O B A U D E C K  
 B E I Z Y W V M O U H E E S C  
 R R Q E N U T R O F H E R A U  
 F P N M L J E S U C X E B I L

Find the listed words in the diagram. They run in all directions forward, backward, up, down and diagonally

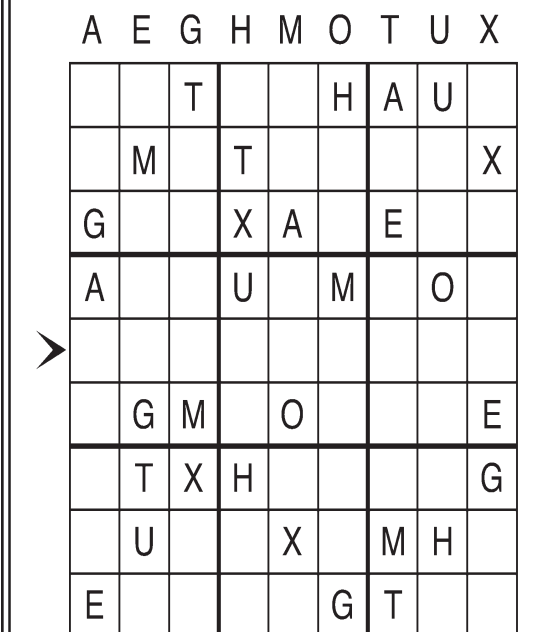
- |          |         |         |         |
|----------|---------|---------|---------|
| Behavior | Company | Excuse  | Humor   |
| Book     | Day     | Food    | Luck    |
| Breeding | Deal    | Fortune | Morning |
| Cheer    | Evening | Friday  |         |

© 2018 King Features Syndicate, Inc. All rights reserved.

# Letter Box

by Linda Thistle

Place a letter in the empty boxes in such a way that each row across, each column down and each small 9-box square contains all of the letters listed above the diagram. When completed, the row indicated will spell out a word or words.



© 2011 King Features Synd., Inc.

# Even Exchange

by Donna Pettman

Each numbered row contains two clues and two 6-letter answers. The two answers differ from each other by only one letter, which has already been inserted. For example, if you exchange the A from MASTER for an I, you get MISTER. Do not change the order of the letters.

- |                               |         |                       |         |
|-------------------------------|---------|-----------------------|---------|
| 1. Hale and _____             | _____ Y | Fireplace             | _____ H |
| 2. Not before or during _____ | F _____ | Modify                | _____ L |
| 3. Birthday cake light _____  | C _____ | CBer's code name      | H _____ |
| 4. Hamburger serving _____    | A _____ | Silly "egg" stuff     | _____ U |
| 5. Cook slowly _____          | A _____ | Black-and-blue mark   | _____ U |
| 6. Actor Glover _____         | A _____ | Marie's brother       | _____ O |
| 7. Leatherneck _____          | _____ E | Docking center        | _____ A |
| 8. Art or music style _____   | _____ R | Wish granter          | _____ I |
| 9. Pantry _____               | _____ R | Firefighter's "steps" | _____ D |
| 10. No-good thief _____       | _____ K | Sing like Bing        | _____ N |

© 2018 King Features Synd., Inc.

# Salome's Stars

**ARIES** (March 21 to April 19) Careful, Lamb. Don't let your generous nature lead to some serious overspending as you contemplate your holiday gift-giving. Your social life kicks off into high gear by week's end.

**TAURUS** (April 20 to May 20) A positive attitude helps you weather annoying but unavoidable changes in holiday plans. Aspects favor new friendships and reinforcement of existing relationships.

**GEMINI** (May 21 to June 20) Demands on your energy level could be much higher than usual as you prepare for the upcoming holidays. Be sure to pace yourself. Friends and family will be happy to help.

**CANCER** (June 21 to July 22) Don't allow a suddenly icy reaction from a friend or family member to continue without learning what caused it — and what can be done to restore that once warm and caring relationship.

**LEO** (July 23 to August 22) A relationship seems to be unraveling, mostly from a lack of attention. It might be a good idea to ease up on whatever else you're doing so you can spend more time working to mend it.

**VIRGO** (August 23 to September 22) New facts emerge that not only help explain the recent rift with a trusted colleague, but also might provide a chance to wipe the slate clean and make a fresh start in your friendship.

**LIBRA** (September 23 to October 22) A family member's personal situation is, fortunately, resolved in time for you to get back into your hectic round of holiday preparations. An old friend might bring a new friend into your life.

**SCORPIO** (October 23 to November 21) Pace yourself in meeting holiday pressures and workplace demands to avoid winding up with a frayed temper and a Scorpian stinger that lashes out at puzzled kith, kin and colleagues.

**SAGITTARIUS** (November 22 to December 21) A financial matter requires close attention. Also, news from a trusted source provides the means to help sort out a long-standing state of confusion and put it into perspective.

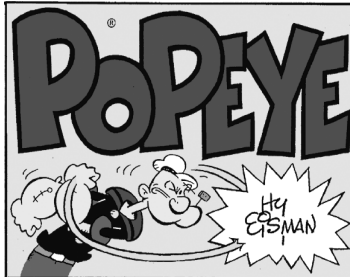
**CAPRICORN** (December 22 to January 19) This is a good time to reinforce family ties. Make it a priority to assess and resolve all outstanding problems. Start the upcoming holiday season with a full measure of love.

**AQUARIUS** (January 20 to February 18) Don't be pressured into a so-called solid-gold investment. Wait until the holiday distractions are over. Then take a harder look at it. You might find that the "gold" is starting to flake off.

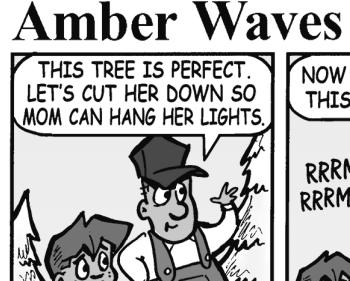
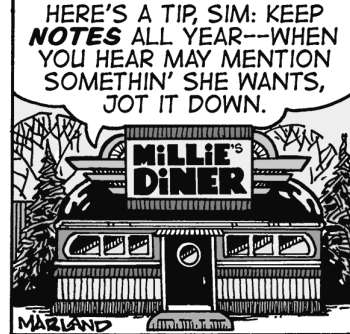
**PISCES** (February 19 to March 20) A former friend might be trying to heal the breach between you by using a mutual friend as an intermediary. Best advice: Keep an open mind despite any lingering bad feelings.

**BORN THIS WEEK:** You have a way of saying the right thing at the right time. Your friendships are deep and lasting.

© 2018 King Features Synd., Inc.



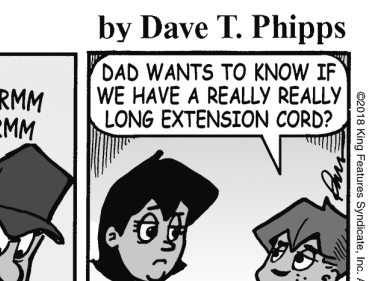
## R.F.D.



## by Mike Marland



## by Mike Marland



## The Spats



## by Jeff Pickering