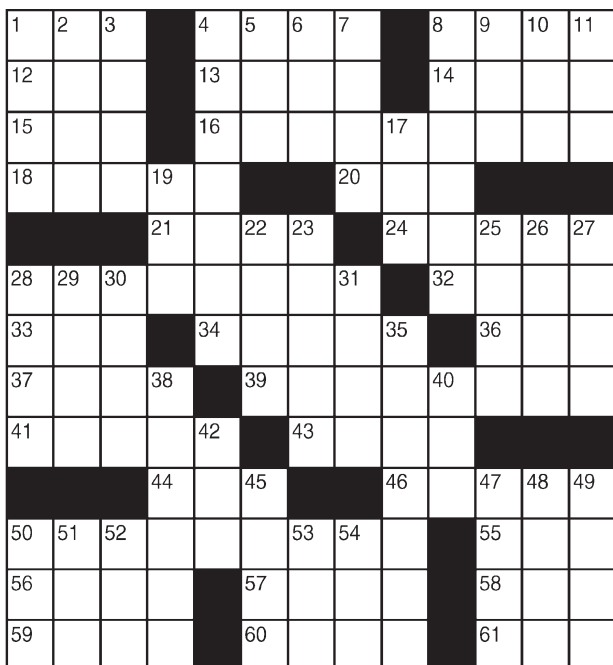


King Crossword

ACROSS

- 1 Bandleader Kyser
- 4 Equitable
- 8 Frizzy haired
- 12 Hockey surface
- 13 Andy's pal
- 14 Circulate
- 15 Historic time
- 16 Twist
- 18 "Aida" composer
- 20 Expert
- 21 Food
- 24 Poolroom supply
- 28 Bring together
- 32 Hammer or sickle
- 33 Inseparable
- 34 Casino machines
- 36 "Kitchy- —!"
- 37 Young female
- 39 Remorseful
- 41 Milkmaid's place
- 43 Analgesic target
- 44 — long way
- 46 Fortunetellers' reading matter?
- 50 Recite a verb's forms
- 55 Verily
- 56 Notion
- 57 " — Brockovich"
- 58 Uncooked
- 59 Consider



- 60 Transmit
- 61 Type measures
- 10 Deteriorate
- 11 Have bills
- 17 Sphere
- 19 Dict. info
- 22 Body powder
- 23 Urban hang-out
- 25 Mischievous Norse god
- 26 Swag
- 27 — gin fizz
- 28 Gear teeth
- 29 Not procrastinating
- 50 "Ei —"
- 51 Praise in verse
- 52 Born
- 53 Exist
- 54 Can matter
- 10 Deteriorate sort
- 40 Genetic letters
- 42 "Skip to My —"
- 45 Quite some time
- 47 Muse's instrument
- 48 Intend
- 49 Cutting implements
- 50 "Ei —"
- 51 Praise in verse
- 52 Born
- 53 Exist
- 54 Can matter

DOWN

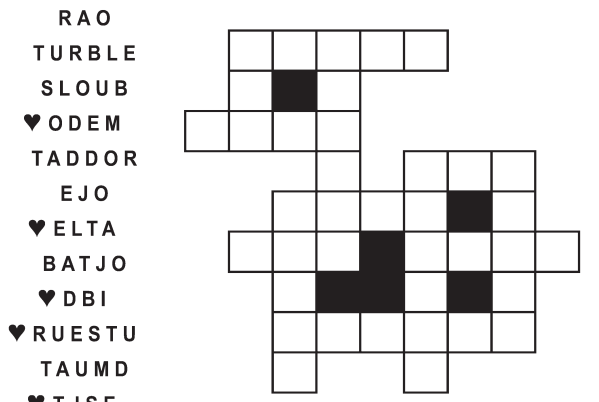
- 1 Ukraine's capital
- 2 Farm measure
- 3 Once around the sun
- 4 Salon treatments
- 5 I love, to Livy
- 6 Charged bit
- 7 Answer an invite
- 8 Showing buoyancy
- 9 Winter bug

© 2018 King Features Synd., Inc.

FEAR KNOT

By: rj johnson

DOUBT? ... OR DARE!



Unscramble these twelve letter strings to form each into an ordinary word (ex. HAGNEC becomes CHANGE). Prepare to use only ONE word from any marked (♥) letter string as each unscrambles into more than one word (ex. ♥RATHE becomes HATER or EARTH or HEART). Fit each string's word either across or down to knot all twelve strings together.

NEW! 30 Fear Knot puzzles \$3.50 • Six Volumes • Order at: rbmall.com

Puzzles4Kids

by Helene Hovanec

WORD FUN

Study the two words on each line to find the ONE letter in the left column that is NOT in the word in the right column. Write the extra letter on the blank space. Then read DOWN to answer this riddle:

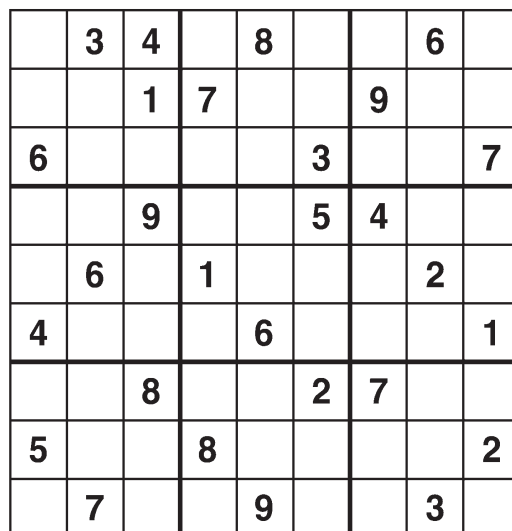
WHAT BELONGS TO YOU BUT IS USED MORE BY OTHER PEOPLE?

- | | | | | | |
|--------|---|-------|--------|---|-------|
| ASHLEY | — | LEASH | SONNET | — | STONE |
| ASTROS | — | STARS | EASTER | — | STEER |
| SAUCER | — | CARES | HOMERS | — | HORSE |
| STREAM | — | TEAMS | CLOSED | — | COLDS |

© 2018 King Features Synd., Inc.

Weekly SUDOKU

by Linda Thistle



Place a number in the empty boxes in such a way that each row across, each column down and each small 9-box square contains all of the numbers from one to nine.

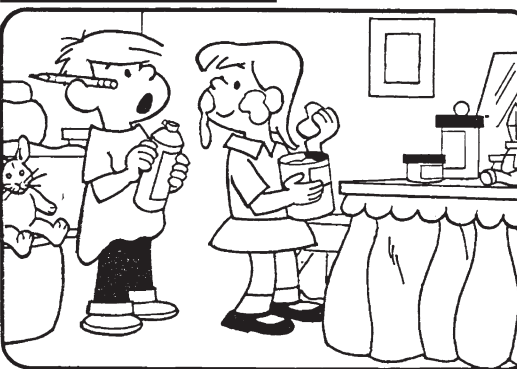
DIFFICULTY THIS WEEK: ♦♦♦

- ♦ Moderate
- ♦♦ Challenging
- ♦♦♦ HOO BOY!

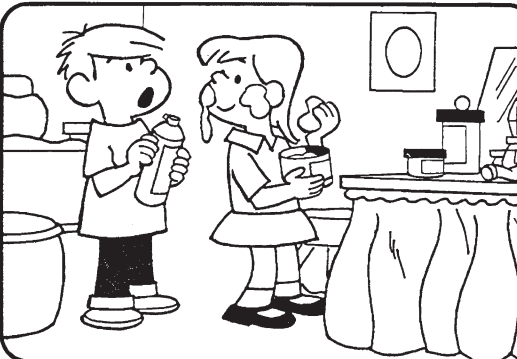
© 2018 King Features Synd., Inc.

HOCUS-FOCUS

BY HENRY BOLTINOFF



Find at least six differences in details between panels.



Differences: 1. Pencil is missing. 2. Buny is missing. 3. Shirt is different. 4. Can is smaller. 5. Picture is different. 6. Bottle is different.

New! 24 HOCUS FOCUS puzzles \$3.50 • 24 Volumes • Order at: rbmall.com

Just Like Cats & Dogs

by Dave T. Phipps



MAGIC MAZE • ANAGRAMS OF COUNTRIES

- N K H D A X U Q E N K H E B Y
 G R A Y M E N G L A N D E R V
 S P M J H E O E U B Y V T Q O
 L I G D B L Y W M T R L P M K
 I F D B A Y W L G K U E S Q O
 M K I N F D N A I L R N R B Z
 X W A U I S E I B A R A S U Q
 O N L J N A H T A I N P D O P
 F D C I A Y H Y W R V D S T S
 Q P A N L K I C H E F L E E C
 B P Z Y W V U S R S A O Q R P

Find the listed words in the diagram. They run in all directions forward, backward, up, down and diagonally

- | | | | |
|----------|-----------|---------|----------|
| Also | Dark men | Old pan | Rabies |
| Analag | Englander | Pains | Red nail |
| Big mule | Gray men | Panel | Serial |
| Chain | Laity | Pure | |

© 2018 King Features Syndicate, Inc. All rights reserved. Find More Word Search Puzzles • 6 Volumes \$3.50 ea. • Order at: rbmall.com

Letter Box

by Linda Thistle

Place a letter in the empty boxes in such a way that each row across, each column down and each small 9-box square contains all of the letters listed above the diagram. When completed, the row indicated will spell out a word or words.



© 2011 King Features Synd., Inc.

Even Exchange

by Donna Pettman

Each numbered row contains two clues and two 6-letter answers. The two answers differ from each other by only one letter, which has already been inserted. For example, if you exchange the A from MASTER for an I, you get MISTER. Do not change the order of the letters.

- | | | | |
|------------------------|-------------|----------------------|-------------|
| 1. Texan capital | — — — — I — | English author, Jane | — — — — E — |
| 2. Be a busybody | — N — — — | Reporter's exclusive | — C — — — |
| 3. Discussion subject | — — P — — | Gin's companion | — — N — — |
| 4. Tart tasting | — I — — — | Well again | — — E — — |
| 5. Mickey's pet | — — U — — | Greek philosopher | — — A — — |
| 6. Peter Pan's Darling | — E — — — | Breezy | — — I — — |
| 7. Fail to recall | — — — — T | Faked a signature | — — — — D |
| 8. Long-winded | — — — D — | Fret | — — — R — |
| 9. Fry quickly | — — — T — | Gravy | — — — C — |
| 10. Alternate route | — — — T — | Eat with gusto | — — — V — |

© 2018 King Features Synd., Inc.

Salome's Stars

ARIES (March 21 to April 19) Don't waste your time and energy fretting over remarks you consider unnecessary or unkind. Best advice: Ignore them, and just keep doing your usual good job.

TAURUS (April 20 to May 20) Getting that new perspective on a workplace situation could lead to a solution everyone will accept. Meanwhile, make time to keep up with your creative pursuits.

GEMINI (May 21 to June 20) Those changes you planned to implement in early summer might need to be reassessed. But don't make any moves until you've discussed this with someone you trust.

CANCER (June 21 to July 22) Your aspects favor harmony, making this a good time to work out problems in relationships — whether personal or professional, big or small. An old friend comes back.

LEO (July 23 to August 22) While you're still riding that high-powered beam, you might begin to lose focus by week's end. Could be that you'll need to do a little catnapping to restore your spent energies.

VIRGO (August 23 to September 22) An unexpected development creates a lot of excitement. Where it takes you is your decision. Check out the possibilities, then decide if you want to go with it or not.

LIBRA (September 23 to October 22) Although your supporters help you squash an unfair claim against you, don't let this go unchallenged. You need to learn more about the motives of those behind it.

SCORPIO (October 23 to November 21) There still are some tasks to clear up by midweek. Then you can welcome the new month on a high note. A friend brings surprising but very welcome news.

SAGITTARIUS (November 22 to December 21) You might want to change your plans before they're set in cement. Consider advice from colleagues. But remember that, ultimately, it's your choice.

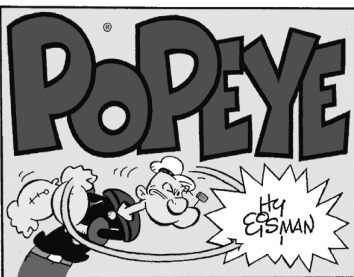
CAPRICORN (December 22 to January 19) A difficult situation is working itself out. Lingering problems should be resolved by week's end, allowing the Goat to enjoy a calmer, less stressful period.

AQUARIUS (January 20 to February 18) Be careful not to move so quickly that you miss possible warning signs that could upset your plans. Slow down. Your supporters will continue to stand by you.

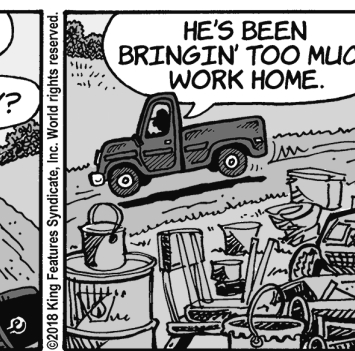
PISCES (February 19 to March 20) Your generosity in sharing your time and wisdom with others leads to an intriguing development that could have you considering some interesting choices.

BORN THIS WEEK: You have a way of influencing people to be and do their best. You would make an excellent teacher.

© 2018 King Features Synd., Inc.



R.F.D.



Amber Waves

by Dave T. Phipps



The Spats

by Jeff Pickering

