

Estill Lady Engineers Continue to Roll

MIKE WISEMAN
Tribune Sportswriter

The Estill County Lady Engineers Softball Team saw their season record go to 7-2 with an excellent week of play. Even though their win streak was snapped at six games, the Ladies continue to take care of business on the field. After a blowout win against district rival on Monday night, Estill would face one of their biggest non-conference rivals in Garrard County along with games against Montgomery County, Madison Central, and Perry County Central, who most believe to be Estill's biggest obstacle in their quest to regain the 14th Region Title.

Estill 5 - Garrard 0

Estill would plate a single run in the second inning to

take an early lead until Elizabeth Hardy would connect in the fourth for her 1st career long ball and clear the bases with the Grand Slam. Covey would do the rest on the mound and the Lady Engineers would grab their best win of the year.

Stats: S.Wiseman- 1-3, M.Hale- 2-3, RBI, E.Hardy- 1-2, HR (GS), 4 RBI, K.Covey- 7 IP, 5 H, 0 ER, 1 BB, 6 K.

Estill 9, M'gomery 3

The Lady Engineers would fall behind early after giving up two runs in the first, but Estill's bats would warm up to the tune of 13 hits and a solid win.

Stats: L.Wood- 3-4, 2B, 2 RBI, K.Covey- 1-3, 2B, RBI, S.Wiseman- 2-3, BB, K.Riddell- 3-4, 2B, 4 RBI, M.Hale- 1-3, RBI, A.Sparks-

3-3, 3B. K.Covey- 7 IP, 5 H, 3 R, 1 ER, 0 BB, 9 K.

Estill 4 - Madison 9

Estill's win streak would be snapped at six games with no doubt their sloppiest game of the year. The Ladies would commit 5 errors in this one and allow 5 unearned runs while only rapping out five hits of their own.

Stats: L.Wood- 1-4, K.Covey- 1-1, RBI, 3 BB, S.Wiseman- 1-3, BB, M.Hale- 1-4, A.Sparks- 1-3. K.Covey- 6 IP, 9 H, 9 R, 4 ER, 1 BB, 3 K.

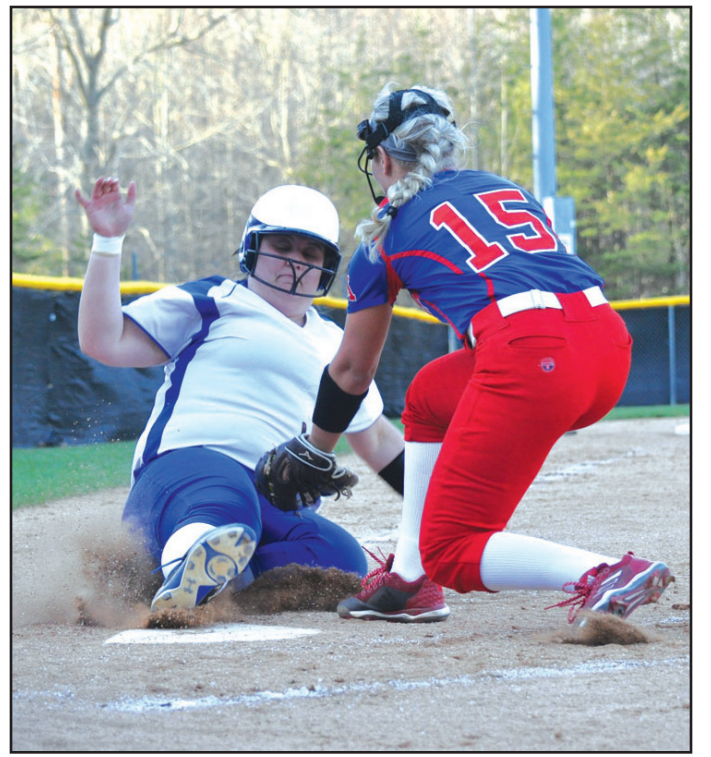
Estill 11 - Perry 1

The Lady Engineers were out to prove a point in this one as they handed out a butt whipping to regional rival PCC. Riddell and Hale would go "yard" and S.Wiseman would drive in

four in the five inning affair.

Stats: L.Wood- 2-3, K.Covey- 3-4, 2B, RBI, S.Wiseman- 2-4, 4 RBI, K.Riddell- 1-3, HR, 3 RBI, T.Duechle- 1-3, M.Hale- 3-3, 2 2B, HR, 3 RBI, K.Covey- 5 IP, 3 H, 1 ER, 2 BB, 8 K.

The Lady Engineers action continues this week with mostly road games. 4/18 @ Wolfe County, 4/19 @ Lee County, 4/20-21 @ Letcher County- Wizard of OZZ Classic (4 games), 4/23 @ Model. A home game with Madison Central is scheduled for Tuesday 4/17- weather permitting. Come out and support the Lady Engineers Softball Team as they work to bring the Regional Title back home. GO BIG BLUE!!!



Junior first baseman Taylor Duechle tries to score on a wild pitch against Montgomery Co. (Clara Wiseman photos)



Kaylee Covey fires to the plate



Sarah Wiseman connects.



Elizabeth Hardy Ready at 3rd.



Lindsey Wood and her Gold Glove.

Middle School Softball Teams Unbeaten

You've heard a lot about the Estill High School Lady Engineers since 2005 when they first went to the State from the 10th Region; then coach Shirley Beard's team has dominated the 14th Region since they were moved there.

But there's another team up the road lately that's making a lot of noise as well and that's the Estill County Middle School Lady Engineers.

These Lady Engineers have blown the cover off the ball in opening undefeated 8-0 seasons with both the 8th grade and 7th grade teams.

The 8th grade's toughest games were the first two of the season when they squeaked by Rockcastle 4-3 and Jackson City 4-2, but after a big win over Clark Moores, 8-1, Estill shut out four straight teams, 21-0, 21-0, 19-0 and 15-0, before their rematch with a tough Rockcastle team last Thursday.

The Lady Rockets picked up a quick 5-0 lead on Estill errors but the Lady Engineers came storming back to win 11-5, including a Grand Slam.

Estill's 8th ended last week with a 103-11 run

advantage over their opponents. The 7th graders are 95-15 runs over opponents.

Eighth grade starters are Katie Johnson, Neesa West, Lauren Farmer, Henlee Hunter and Emma Winkle, along with 7th graders Rylee Friend, Jessie Tuttle, Maci Muncie, and a 6th grader, Vana Newton. Winkle is also on the high school roster as well as two other 8th graders that play only for the high school squad.

"This is an awesome group of kids with so much potential," says head coach Shayla Carroll. "Their softball knowledge, love for the game, and love for each other is overwhelming! They're coachable and willing to put in the work in order to be successful! These girls give their best effort and have fun every single game. I am beyond proud of them!"

Carroll is assisted by veteran coaches Lynn West and Lorre Collins.

Other 7th graders include Piper Samples and Summer Bosman.

Sixth graders are Newton, Kylah Covey, Lexi Muncie, Hannah Peters, Aaliyah Rogers and Carlie Plowman; along with two 5th graders, Madi Rose and Marlo Puckett.



ABOVE: Estill gets the call on 3rd base to load bases. BELOW: Katie Johnson heads for 3rd base during Estill's win over Rockcastle County.



Engineers are 6-5 after tough week

MIKE WISEMAN
Tribune Sportswriter

The Estill County Engineer Baseball Team saw their season record fall to 6-5 after suffering some tough losses last week. The toughest would have to be a 10-4 defeat at the hands of rival Powell County on Estill's home turf. This loss moves the Engineers to second place in the district. Estill will try to get some revenge and first place tie in the district with a showdown on May 1st at Powell Co. The week wasn't a total loss as the Engineers destroyed Lee County by the score of 20-1 in five innings. Estill would drop two games in Rowan

County as they played in the Anchor Down Classic. An 8-2 loss would be followed up by a 11-0 defeat.

The Engineers will be looking to make up some lost ground this week as have six games at the friendly confines of Danny Wood Field. 4/17 vs Owsley County, 4/18 vs Bath County, 4/20 @ George Rogers Clark, 4/21 Engineer Classic vs Bourbon County at 11 am and Letcher County Central at 3 pm, 4/23 vs Madison Central, 4/24 vs Lee County. Plenty of chances to come out and support the Estill County Engineers Baseball Team! GO BIG BLUE!!!

Free Computer Classes!
Build your skills now
Begin date Tuesday, April 24th!

Advanced: Leave this class with hands on experience in basic, intermediate, and advanced Excel. Also, learn why math skills are essential to Excel, building formulas, and integrating technology into the changing workplace, or . . .

Beginning: Build your skills now. Leave this class with advanced MS Word. Also, learn why language skills are essential to using MS Word.

Call us now! 606-723-7323
Estill County Adult Education Skills U



Greater Tuna to be performed by River City Players

Your home town community theater group needs your support! Mark your calendars now to come out for some genuine belly laughs during River City Players' production of Greater Tuna, a hilarious comedy about the eccentric inhabitants of Tuna, TX (population 24). There will be 2 performances: Friday, April 20 at 7 p.m., and Sunday, April 22 at 3 p.m. at the ECHS auditorium. Tickets are \$10 for adults and \$5 for students. Call 606-723-5755 or 502-810-7668 for more information.

I, Gary W. Robinson, am a candidate for Magistrate District #3.

I am married to Cindy Arvin Robinson, and we have two amazing children, Kelby and Rachel Robinson.

I am excited about the possibility of serving as Magistrate of District #3, and of working with others to improve Estill County!

I would appreciate your VOTE!

Paid by Gary Robinson

