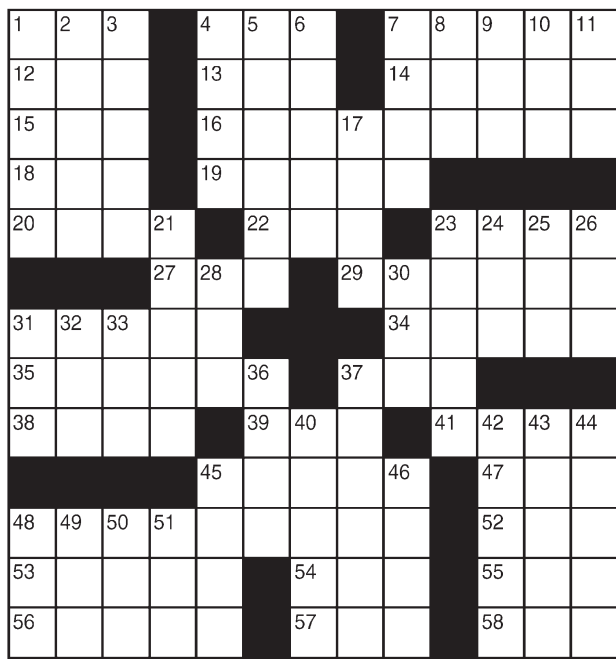


# King Crossword

**ACROSS**

- 1 Chances, for short
- 4 TV watchdog org.
- 7 Obliterate
- 12 Shell game need
- 13 Under the weather
- 14 Started eating
- 15 Take a whack at
- 16 Scrabble or Parcheesi
- 18 "Monty Python" opener
- 19 Wander off
- 20 Hack
- 22 Pilgrimage to Mecca
- 23 Prayer ending
- 27 Rhyming tribute
- 29 Burning
- 31 Magician's cry
- 34 Cow catcher
- 35 Triangular home
- 37 Total
- 38 Constellation component
- 39 Eccentric
- 41 Unctuous
- 45 Twine fiber
- 47 Payable
- 48 Indiana university
- 52 Literary collection
- 53 "Drops of



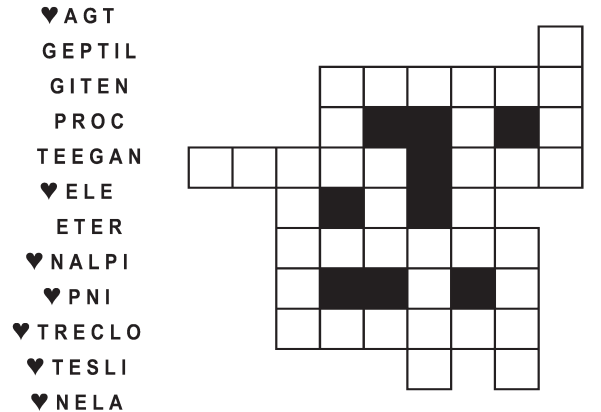
- 20 Hack
- 22 Pilgrimage to Mecca
- 23 Prayer ending
- 27 Rhyming tribute
- 29 Burning
- 31 Magician's cry
- 34 Cow catcher
- 35 Triangular home
- 37 Total
- 38 Constellation component
- 39 Eccentric
- 41 Unctuous
- 45 Twine fiber
- 47 Payable
- 48 Indiana university
- 52 Literary collection
- 53 "Drops of

© 2018 King Features Synd., Inc.

# FEAR KNOT

By: rj johnson

DOUBT? ... OR DARE!



Unscramble these twelve letter strings to form each into an ordinary word (ex. HAGNEC becomes CHANGE). Prepare to use only ONE word from any marked (♥) letter string as each unscrambles into more than one word (ex. ♥RATHE becomes HATER or EARTH or HEART). Fit each string's word either across or down to knot all twelve strings together.

NEW! 30 Fear Knot puzzles \$3.50 • Six Volumes • Order at rbmall.com

# Puzzles4Kids

by Helene Hovanec

## CODED RIDDLE

Change each letter to the one that comes immediately BEFORE it in the alphabet to find a riddle and its answer.

Here's a copy of the alphabet to guide you:

ABCDEFGHIJKLMNOPQRSTUVWXYZ

IPX EP ZPV NBLF UIF OVNCFS

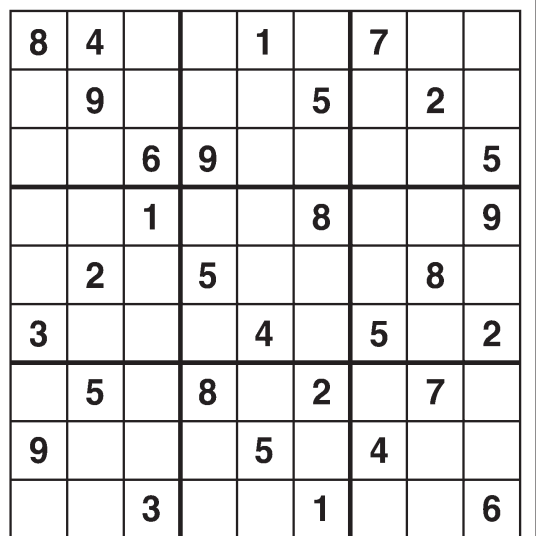
POF EJTBBQFBS? BEE UIF

MFUUFS "H" BOE JU JT "HPOF."

© 2018 King Features Synd., Inc.

# Weekly SUDOKU

by Linda Thistle



Place a number in the empty boxes in such a way that each row across, each column down and each small 9-box square contains all of the numbers from one to nine.

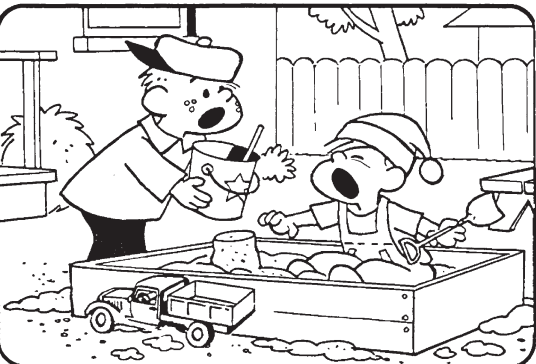
## DIFFICULTY THIS WEEK: ♦

♦ Moderate ♦♦ Challenging  
♦♦♦ HOO BOY!

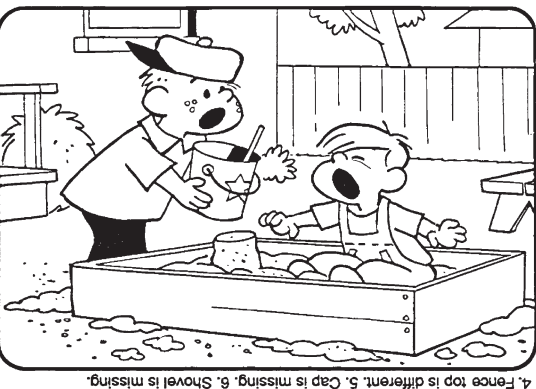
© 2018 King Features Synd., Inc.

# HOCUS-FOCUS

BY HENRY BOLTIHOFF



Find at least six differences in details between panels.



Differences: 1. Falling is lower, 2. Sleeve is shorter, 3. Truck is missing, 4. Fence top is different, 5. Cap is missing, 6. Shovel is missing.

HOCUS FOCUS puzzles \$3.50 • 30 Volumes • Order at: rbmall.com

# Just Like Cats & Dogs

by Dave T. Phipps



YOUR HUSBAND CAN TELL YOU ARE UPSET. HE HAS RETAINED MY SERVICES AS TO NOT INCRIMINATE HIMSELF BY GUESSING WHY.

© 2018 King Features Synd., Inc. All rights reserved.

# MAGIC MAZE • ROMANTIC CITIES

P P M E J H E C Z X U E S Q N  
L J G E L A D E V O L E C Z X  
V T K C O L E V O L W E N R P  
N L J E H E I Y I C A G Y D T  
W V M T R P N V T L N K I N N  
G O E V A L E N T I N E C A O  
R Y O J E V O L L R C B Z L M  
G N I V O L X R Y R A E D E E  
W U S L R P A O M L J E S V S  
I G E D B D A Y Y E N O H O O  
X W U T S Q Y D A L E V O L R

Find the listed words in the diagram. They run in all directions forward, backward, up, down and diagonally.

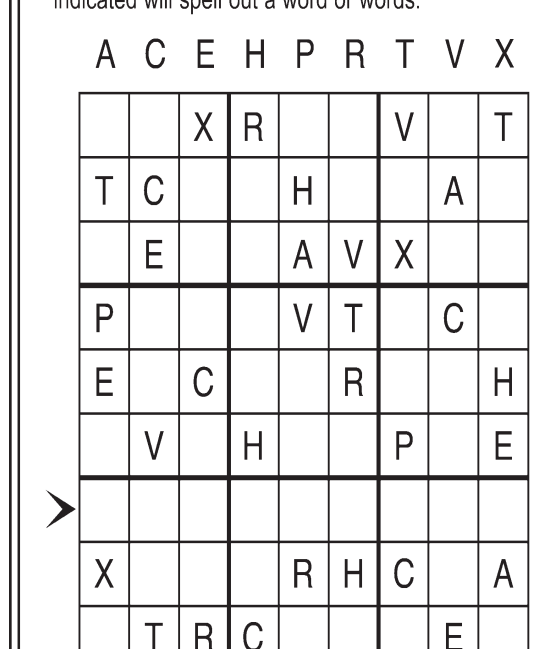
Darling	Lovejoy	Loveville	Rose City
Deary	Lovelady	Loving	Rosemont
Heartville	Loveland	Newlove	Valentine
Lovedale	Lovelock	Romeo	

© 2018 King Features Syndicate, Inc. All rights reserved.  
Find More Word Search Puzzles • 6 Volumes \$3.50 ea. • Order at: rbmall.com

# Letter Box

by Linda Thistle

Place a letter in the empty boxes in such a way that each row across, each column down and each small 9-box square contains all of the letters listed above the diagram. When completed, the row indicated will spell out a word or words.



© 2011 King Features Synd., Inc.

# Even Exchange

by Donna Pettman

Each numbered row contains two clues and two 6-letter answers. The two answers differ from each other by only one letter, which has already been inserted. For example, if you exchange the A from MASTER for an I, you get MISTER. Do not change the order of the letters.

- |                        |           |                     |           |
|------------------------|-----------|---------------------|-----------|
| 1. Financier           | — A — — — | Underground shelter | — U — — — |
| 2. Magic spell         | — — — — M | Graph               | — — — — T |
| 3. Calvary sword       | — — — — B | More secure         | — — — — F |
| 4. Petroleum number    | — — — — N | Musical interval    | — — — — V |
| 5. Weeping tree        | W — — — — | Bed cushion         | P — — — — |
| 6. Factory             | — — — — T | Pirate's runway     | — — — — K |
| 7. Watch location      | — R — — — | Belt location       | — A — — — |
| 8. Seem to be          | — — — — R | Petition            | — — — — L |
| 9. Linger              | — A — — — | NFLer Bradshaw      | — E — — — |
| 10. Home of the Louvre | — — — — I | Hair divisions      | — — — — T |
- © 2018 King Features Synd., Inc.

# Salome's Stars

**ARIES** (March 21 to April 19) Taking advice isn't always easy for self-assured Rams and Ewes who think they know what's best. But it wouldn't hurt to listen to what close colleagues have to say.

**TAURUS** (April 20 to May 20) You know how to balance life's practical aspects with the poetic. This gives you a special edge this week in both your professional endeavors and your personal life.

**GEMINI** (May 21 to June 20) Focus on keeping a balance between your home-related activities and your workplace responsibilities. Be mindful of both without obsessing over one or the other.

**CANCER** (June 21 to July 22) A change in plans is likely as you discover more facts about a possible commitment. Continue to ask questions and, if you're not sure about the answers, demand proof.

**LEO** (July 23 to August 22) Be careful not to let that Leonine pride keep you from seeking wise, experienced counsel before making an important decision. A family member once again seeks your help.

**VIRGO** (August 23 to September 22) That surge of Virgo energy drives you to take on more work assignments. Be careful you don't overdo it, or you might find yourself overdone: i.e., burned out.

**LIBRA** (September 23 to October 22) Your decision to be upfront with colleagues on a touchy matter causes some consternation at first. But in the end, your honesty wins their trust and admiration.

**SCORPIO** (October 23 to November 21) As in the past, someone again wants to share a secret with you, knowing it will be safe. But do you really want to be this person's confidante? Think about it.

**SAGITTARIUS** (November 22 to December 21) As one of nature's straight shooters, you seek to correct misconceptions about a project. Do so, of course, but without giving away too much too soon.

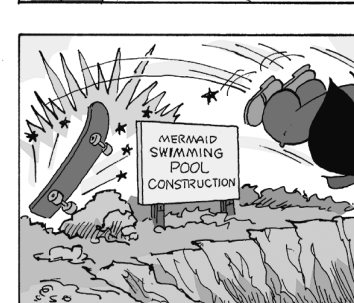
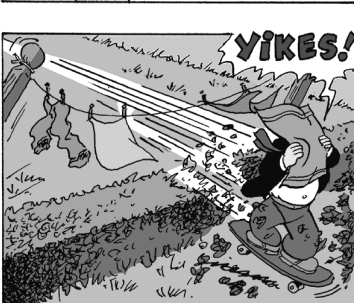
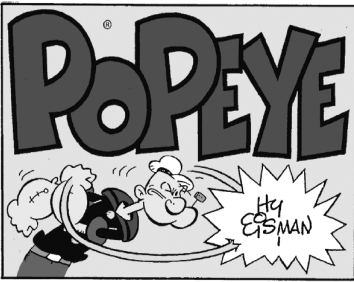
**CAPRICORN** (December 22 to January 19) Creative pursuits continue to be strong in the gifted Goat's aspect. New friendships can come from sharing these experiences with like-minded art aficionados.

**AQUARIUS** (January 20 to February 18) Resolve lingering grumblings over your way of doing things by keeping your mind open to suggestions while continuing to show how your plans will work.

**PISCES** (February 19 to March 20) The perceptive Piscean might find that changing course in midstream isn't as workable as it would seem. Explore this option carefully before making a decision.

**BORN THIS WEEK:** Your willingness to share your love of life's good things brings joy to many, including, of course, yourself.

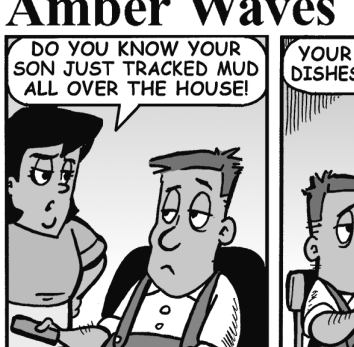
© 2018 King Features Synd., Inc.



R.F.D. by Mike Marland



Amber Waves by Dave T. Phipps



The Spats by Jeff Pickering



© 2018 King Features Synd., Inc.