

Eric Baker
Estill County Extension
Agent for Agriculture
& Natural Resources

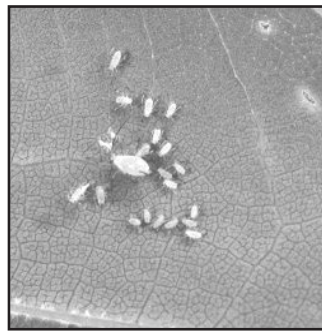
Long Spring Favors Aphids in Landscape

Long Spring Favors Aphids in the Landscape This long spring is ideal for aphids. Colonies of the small sap-feeders can be found on many landscape plants now. Impacts of aphids vary widely. Some species manage to remove sap without any obvious effect on plants. However, a plant's reaction to injected saliva may result in severe distortion of new tissue. Other plant species may excrete large volumes of honeydew, producing sticky, shiny leaves that soon turn black with sooty mold.

Aphid infestations can develop from eggs laid on host plants the previous autumn or from winged aphids that fly to plants in spring. Winged aphids deposit several wingless young on tender tissue before moving on to find a new plant, scattering their offspring to increase chances of survival. Immature aphids, or nymphs, grow rapidly, maturing in 7 to 10 days. Then they are ready to produce their own live young. Depending on the species and food quality, aphids may produce 20 to 40 offspring. The process is repeated several times, resulting in tremendous population explosions.

Early detection is the key to reducing aphid infestations. Regular inspection of terminal foliage allows early detection of aphid infestations before symptoms develop and while control can be relatively easy and successful. Examine the bud area and undersides

of the new leaves for clusters or colonies of small aphids. Small numbers of colonies on small plants can be crushed and infested leaves removed.



An aphid colony developing around an adult female. (Photo: Lee Townsend, UK)

Watch for signs of natural enemies at work. Lady beetles may be able to deal with moderate numbers of aphids. Large, well-developed infestations may warrant an insecticide application on small or newly-established plants. Most products used for aphid control work as contact insecticides. Spray droplets must land on the aphids and be absorbed

into their bodies. Thorough spray coverage directed at growing points and protected areas is vital. It is difficult to treat large trees because of the high spray pressure necessary to penetrate the foliage and to reach the tallest portions of the tree. Hose-end sprayers can be used on 15 foot to 20 foot trees but they need to produce a stream, rather than an even pattern, to reach these levels. Skips in coverage are common and there is a significant potential for applicator exposure through drift and runoff.

Aphid control is rarely feasible or necessary on healthy plants. For more information, contact the Estill County Extension office at 723-4557.

Educational programs of the Cooperative Extension Service serve all people regardless of economic or social status and will not discriminate on the basis of race, color, ethnic origin, national origin, creed, religion, political belief, sex, sexual orientation, gender identity, gender expressions, pregnancy, marital status, genetic information, age, veteran status, or physical or mental disability.

Wishing Well®

2	4	6	2	6	8	3	4	2	6	5	2	3
T	H	B	E	E	B	E	A	A	O	I	C	V
5	3	2	4	3	4	5	8	6	7	8	7	8
N	E	H	V	N	E	C	A	P	B	L	E	A
2	7	3	6	3	6	3	5	8	3	5	7	6
S	C	T	E	U	N	A	O	N	L	M	H	T
3	8	5	3	4	6	3	7	8	6	5	8	4
S	C	E	U	C	O	C	E	E	L	I	D	O
6	5	3	5	4	2	6	5	4	3	5	3	7
I	N	C	C	U	U	F	R	R	E	E	S	E
4	3	5	4	7	8	4	7	8	5	8	5	7
A	S	A	G	R	A	E	F	C	S	T	E	U
2	5	8	6	2	8	2	7	8	2	8	2	8
C	D	I	E	C	V	E	L	I	S	T	S	Y

HERE IS A PLEASANT LITTLE GAME that will give you a message every day. It's a numerical puzzle designed to spell out your fortune. Count the letters in your first name. If the number of letters is 6 or more, subtract 4. If the number is less than 6, add 3. The result is your key number. Start at the upper left-hand corner and check one of your key numbers, left to right. Then read the message the letters under the checked figures give you.

©2018 King Features Syndicate, Inc. All rights reserved.

CryptoQuip

This is a simple substitution cipher in which each letter used stands for another. If you think that X equals O, it will equal O throughout the puzzle. Solution is accomplished by trial and error.

Clue: F equals T

QI R UPPJ DPYMQEK UQDV
WRBP IYSB R WPFYRQE QFRZQRE
JYSMQEWP, SEP BQKVF UPPB
QF R FOYQE FOYPPE.

©2018 King Features Synd., Inc.

CryptoQuip puzzles \$3.50 • 24 Volumes • Order at: rbmamall.com

CryptoQuote

AXYDLBAAXR
is LONGFELLOW

One letter stands for another. In this sample, A is used for the three L's, X for the two O's, etc. Single letters, apostrophes, the length and formation of the words are all hints. Each week the code letters are different.

YU CR-VISSXQ JRDZXKL
YZLZCWXD (YRSRWRB) ... PX
VIL'W XBXL JZLQ JRDZXKL
VRNLWDZXC RL WPX YIA,
SXW ISRLX QXIS OZWP WPXY.
— CWISZL

©2018 King Features Synd., Inc.

New! CryptoQuote puzzles \$3.50 • 6 Volumes • Order at: rbmamall.com

Puzzle Answers

May 2, 2018

Puzzles4Kids

Answer

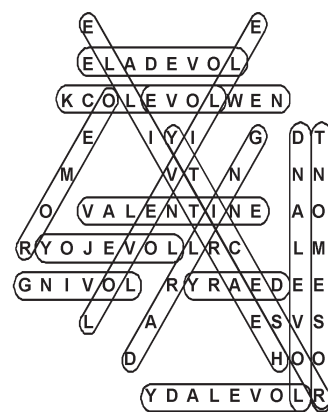
How do you make the number one disappear? Add the letter "G" and it is "GONE."

Letter Box

Solution

H	A	X	R	E	C	V	P	T
T	C	V	X	H	P	E	A	R
R	E	P	T	A	V	X	H	C
P	R	H	E	V	T	A	C	X
E	X	C	A	P	R	T	V	H
A	V	T	H	C	X	P	R	E
C	H	A	P	T	E	R	X	V
X	P	E	V	R	H	C	T	A
V	T	R	C	X	A	H	E	P

ROMANTIC CITIES



CryptoQuip

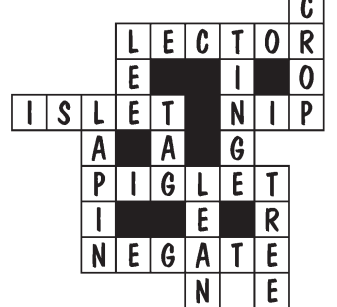
answer
If a deep serving dish came from a certain Italian province, one might deem it a Turin tureen.

CryptoQuote

answer
My so-called foreign minister (Molotov) ... He can't even find foreign countries on the map, let alone deal with them. — Stalin

FEAR & KNIGHT

answer



Even Exchange

answers

- Banker, Bunker
- Charm, Chart
- Saber, Safer
- Octane, Octave
- Willow, Pillow
- Plant, Plank
- Wrist, Waist
- Appear, Appeal
- Tarry, Terry
- Paris, Parts

Weekly SUDOKU

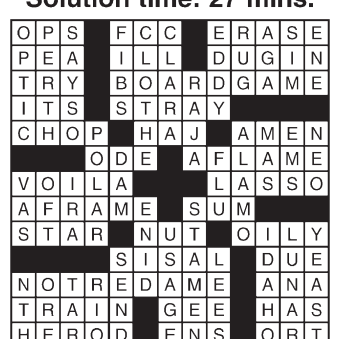
Answer

8	4	5	2	1	6	7	9	3
1	9	7	3	8	5	6	2	4
2	3	6	9	7	4	8	1	5
5	6	1	7	2	8	3	4	9
4	2	9	5	6	3	1	8	7
3	7	8	1	4	9	5	6	2
6	5	4	8	3	2	9	7	1
9	1	2	6	5	7	4	3	8
7	8	3	4	9	1	2	5	6

King Crossword

Answers

Solution time: 27 mins.



Bible Trivia Answers

Now available by Wilson Casey! 2017 Bible Trivia box calendar loaded with daily teasers.

ANSWERS 1 1700: 2) Galilee; 5) Coats Hebrews; 3) 200; 4) Cana of

The Garden Bug

Mother plants

One of the most common methods of plant propagation is the taking of cuttings. During this process, a mother plant – the plant whose genes you want to preserve – has small branches removed. The cuttings are treated with hormones gels or powders to promote root growth, and then planted in a suitable growing media, where they take root and become genetic copies of the mother plant. Feeding mother plants a mixture of fulvic acid and seaweed 2-3 times per week for a couple of weeks prior to taking cuttings makes for stronger clones.

— Brenda Weaver

Source: www.maximumyield.com

© 2018 by King Features Syndicate, Inc. World rights reserved.

Birding BITS

BY Cindy Brook

No Dryer Lint

There have been some questions about putting out dryer lint for nesting material. Dryer lint is actually harmful to birds and should not be used. It is very dusty, which can affect birds' respiratory systems, and becomes hard and scratchy when it gets wet. Overall, it's just not a good thing.

E-mail: birdingbits@cfl.rr.com
© 2018 King Features Syndicate, Inc.

SCRAMBLERS

solution

- Bundle;
- Respect;
- Delay;
- Erode

Today's Word
DOUBTS

Stickeler's Puzzle

STICKELERS [sic]
by Terry Stickels

Two of the six words below are misspelled. See how long it takes you to come up with the correct answers.

sepulchre
acquiesce
embarass
persistence
playwright
rapport

©2018 King Features Syndicate

Stickeler's Answer on Page 11

Farming News

Thursday, May 31st @ 3:30pm

UK Ag Equine Farm & Facilities Expo

University of Kentucky Ag Equine Programs will host its annual Farm and Facilities Expo from 3:30 p.m. to 8 p.m. EDT Thursday, May 31, at Knapper Farm, 485 Chatham Lane in Harrodsburg.

Farm managers and horse owners will have the opportunity to explore visitor booths and see displays on every aspect of horse farm management. Speakers will provide educational talks about utilizing cost sharing, weed control, rotational grazing, ryegrass and maintaining healthy horses.

"The Equine Farm and Facilities Expo targets small and mid-sized operations with the aim of improving pasture and facility management. We try to provide relevant information and practices that can be implemented on any farm," said Krista Lea, research analyst and coordinator of the UK Horse Pasture Evaluation Program.

The event is free and open to the public. A meal will be provided for those in attendance. While not required, an RSVP is appreciated for food planning purposes. Please email equine@uky.edu to RSVP. For more information about this or future UK Ag Equine Programs events, please visit <http://www.ca.uky.edu/equine>.

Century 21

Advantage Realty, a Robinson Company

MLS REALTOR

WILLIS ESTES
Associate Broker
Cell: 859-582-3731
westes@century21advantage.com
Serving Estill County over 18 Years

The highest compliment my clients can give me is the referral of their friends, family and business partners.

Thank you!