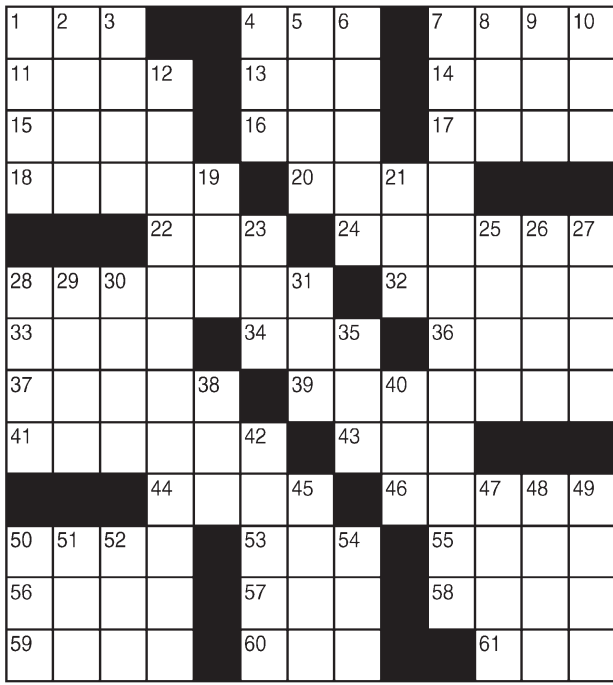


King Crossword

ACROSS

- 1 Hollywood's Photoshopping? (Abbr.)
- 4 \$ dispenser
- 7 Cheek by —
- 11 Pilgrimage to Mecca
- 13 "How come?"
- 14 Overwhelms
- 15 Earthenware pot
- 16 Neither partner
- 17 Require
- 18 Westerns star John
- 20 Language of Pakistan
- 22 Grecian vessel
- 24 Red suit
- 28 Former Soviet republic
- 32 Zagreb resident
- 33 Computer brand
- 34 Youngster
- 36 Christmas
- 37 Salvors
- 39 Topic
- 41 Blew hard
- 43 Greet the villain
- 44 Thing
- 46 Prank
- 50 Celebrity
- 53 Unopened flower
- 55 Noble title
- 56 Congers, e.g.



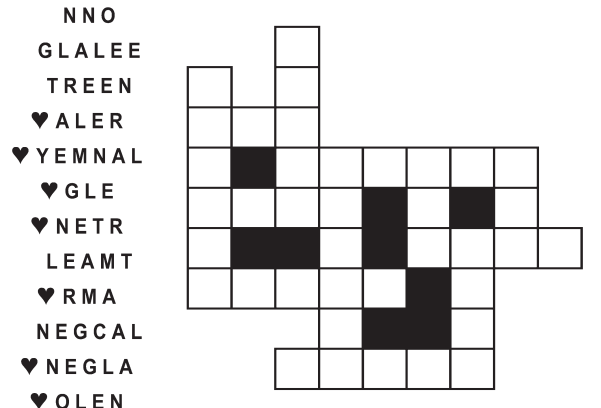
- 57 Unfriendly
- 58 Old portico
- 59 Ridge caused by a blow
- 60 With 61-Across, finis
- 61 See 60-Across
- DOWN**
- 1 Food, slangily
- 2 Festive
- 3 Without doing anything
- 4 Plant bristle
- 5 Commandment starter
- 6 Gift from the wise men
- 7 She's Betty in "Mad Men"
- 8 Have bills
- 9 Tiny
- 10 "Acid"
- 12 New Year's Day
- 19 Mess up
- 21 Calendar abbr.
- 23 Almond or pecan
- 25 Libertine
- 26 Body powder
- 27 Proofreading directive
- 28 Dog owner's chore
- 29 Beige
- 30 Symbol on Canada's flag
- 31 "Help!"
- 35 Place for 28-Down
- 38 Prepared
- 40 Feathery neckpiece
- 42 Subtraction from an account
- 45 Lots
- 47 Actor
- Donovan
- 48 Press
- 49 Dressed
- 50 Stitch
- 51 Golf prop
- 52 Everybody
- 54 Coloring agent

© 2018 King Features Synd., Inc.

FEAR KNOT

By: rj johnson

DOUBT? ... OR DARE!



Unscramble these twelve letter strings to form each into an ordinary word (ex. HAGNEC becomes CHANGE). Prepare to use only ONE word from any marked (♥) letter string as each unscrambles into more than one word (ex. ♥RATHE becomes HATER or EARTH or HEART). Fit each string's word either across or down to knot all twelve strings together.

NEW! 30 Fear Knot puzzles \$3.50 • Six Volumes • Order at rbmall.com

Puzzles4Kids

by Helene Hovanec

CODED RIDDLE

Change each letter to the one that comes immediately BEFORE it in the alphabet to find a riddle and its answer.

Here's a copy of the alphabet to guide you:

ABCDEFGHIJKLMNOPQRSTUVWXYZ

IPX EP FMFQIBOUT UBML UP

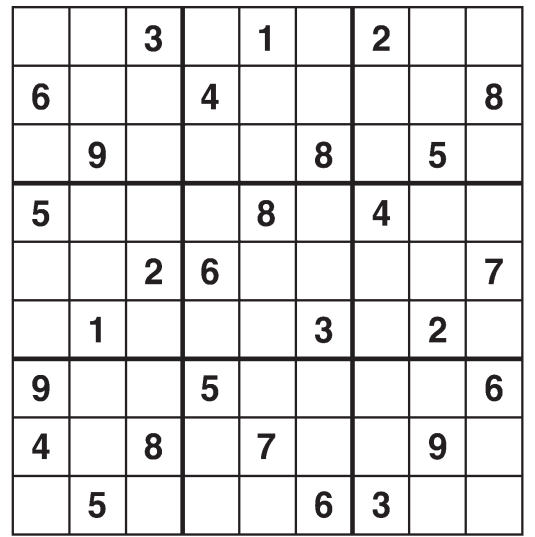
FBDI PUIFS MPOH EJTUBODF?

PO UIF FMFQIPOF.

© 2018 King Features Synd., Inc.

Weekly SUDOKU

by Linda Thistle



Place a number in the empty boxes in such a way that each row across, each column down and each small 9-box square contains all of the numbers from one to nine.

DIFFICULTY THIS WEEK: ♦

- ♦ Moderate
- ♦♦ Challenging
- ♦♦♦ HOO BOY!

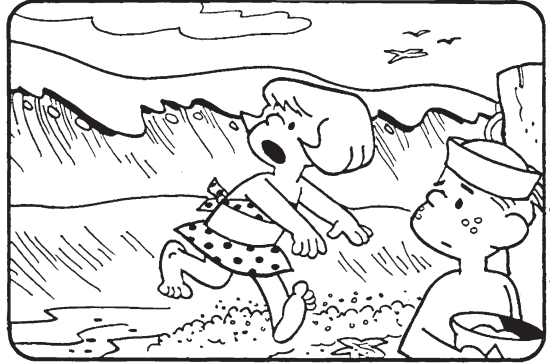
© 2018 King Features Synd., Inc.

HOCUS-FOCUS

BY HENRY BOLTINOFF



Find at least six differences in details between panels.



Differences: 1. Horse is missing; 2. Waiting can is missing; 3. Bathing suit is different; 4. Shovel is missing; 5. Bird is missing; 6. Hat is moved.

HOCUS FOCUS puzzles \$3.50 • 30 Volumes • Order at: rbmall.com

Just Like Cats & Dogs

by Dave T. Phipps



MAGIC MAZE • LONELY

P E B Y W T H R O L J N G E B
 Y W U R D E N O O R A M P N K
 I G D P R E S I D E N T E B Z
 X V S M Q E L O C M K E C I G
 E C I A Y W W O U S D Q A T P
 N T R E S E D O P U L J P H H
 F E C E L I G H T H O U S E A
 Y X V G M V U I S E T Q O M P
 N A N M K J L H F E R R L O C
 C I B Z Y O D N A L S I O O X
 S V U T S O P T U O T R F N Q

Find the listed words in the diagram. They run in all directions forward, backward, up, down and diagonally

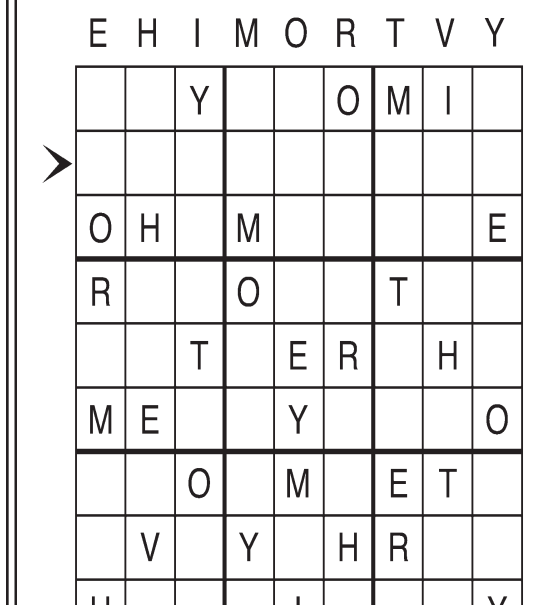
- Desert
- Fire tower
- Hermit Island
- Lighthouse
- Marooned
- Mid-ocean
- North Pole
- Outpost
- President
- Single
- Solitude
- Solo
- Space
- The moon

© 2018 King Features Syndicate, Inc. All rights reserved.
 Find More Word Search Puzzles • 6 Volumes \$3.50 ea. • Order at: rbmall.com

Letter Box

by Linda Thistle

Place a letter in the empty boxes in such a way that each row across, each column down and each small 9-box square contains all of the letters listed above the diagram. When completed, the row indicated will spell out a word or words.



© 2011 King Features Synd., Inc.

Even Exchange

by Donna Pettman

Each numbered row contains two clues and two 6-letter answers. The two answers differ from each other by only one letter, which has already been inserted. For example, if you exchange the A from MASTER for an I, you get MISTER. Do not change the order of the letters.

- | | | | |
|----------------------|---------------|----------------------|-------------|
| 1. Sports team list | R _ _ _ _ _ | Wanted sign | P _ _ _ _ _ |
| 2. Released | _ _ E _ _ _ | Cooked in oil | _ _ I _ _ _ |
| 3. Clothes stiffener | _ _ T _ _ _ | Browse the internet | _ _ E _ _ _ |
| 4. Avocado color | _ _ _ _ N _ _ | From Athens | _ _ _ _ K _ |
| 5. Put the lid on | _ _ V _ _ _ | Tremble | _ _ W _ _ _ |
| 6. Silent | _ _ _ E _ _ | Grandma's blanket | _ _ L _ _ _ |
| 7. Monkey with | _ A _ _ _ _ | Kind of tantrum | _ E _ _ _ _ |
| 8. Restaurant lists | _ E _ _ _ _ | Subtract | _ I _ _ _ _ |
| 9. Confess | _ _ P _ _ _ | Feel ill-will toward | _ _ S _ _ _ |
| 10. Like Zorro | _ _ _ K _ _ | Like some potatoes | _ _ _ H _ _ |

© 2018 King Features Synd., Inc.

Salome's Stars

ARIES (March 21 to April 19) Don't be Sheepish about asking questions and demanding answers. You not only gain needed information, but also respect for your steadfast search for the truth.

TAURUS (April 20 to May 20) A money problem that shows up early in the week is expeditiously resolved by savvy Bovines who know how to turn a momentary financial lapse into a monetary gain.

GEMINI (May 21 to June 20) It's a good time to shed negative energy-draining forces and develop a positive approach to handling current, as well as upcoming, personal and/or professional situations.

CANCER (June 21 to July 22) Your urge to do your best on a current task is commendable. But don't let it become all-consuming. Spend some spiritually restorative time with those you love you.

LEO (July 23 to August 22) This could be a good time for all you Leos and Leonas to take your bows for your recent achievements and then go off to enjoy some fun times with your prides and joys.

VIRGO (August 23 to September 22) A negative response to a well-intentioned suggestion could communicate a sense of distrust you might later find hard to refute. Think carefully before reacting.

LIBRA (September 23 to October 22) Your loving attention comforts a family member who is feeling a bit out of sorts. But be careful to prioritize your time so you don't neglect your work duties.

SCORPIO (October 23 to November 21) Your curiosity might be resented by some. But those who know you will support your penchant for never settling for less than the truth. So stay with it.

SAGITTARIUS (November 22 to December 21) A pesky situation from the past recurs, albeit in an altered form. Deal with it promptly before it can go from merely irksome to decidedly troublesome.

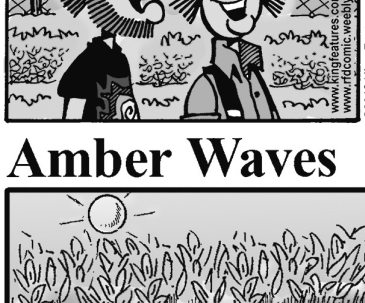
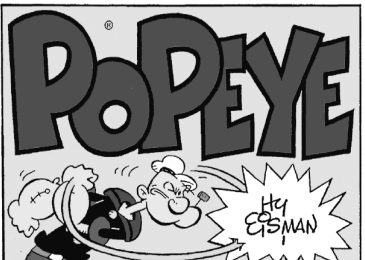
CAPRICORN (December 22 to January 19) Don't wait too long to submit your proposals after giving them a last look-over. If necessary, you should be able to defend any portion called into question.

AQUARIUS (January 20 to February 18) A bid to use your workplace dispute-settling skills in another situation is tempting. But be careful: You might not have all the facts you'll need if you agree to do it.

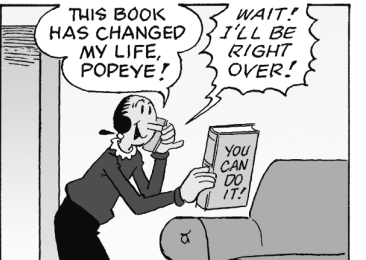
PISCES (February 19 to March 20) That sense of self-doubt is so untypical of you, you should have no qualms in shaking it off. Remind yourself of all you've done and can do, and then do it again.

BORN THIS WEEK: Your ability to charm others without sacrificing sincerity is what makes people want to follow your leadership.

© 2018 King Features Synd., Inc.



© 2018 King Features Synd., Inc.



© 2018 King Features Synd., Inc.



© 2018 King Features Synd., Inc.

© 2018 King Features Synd., Inc.