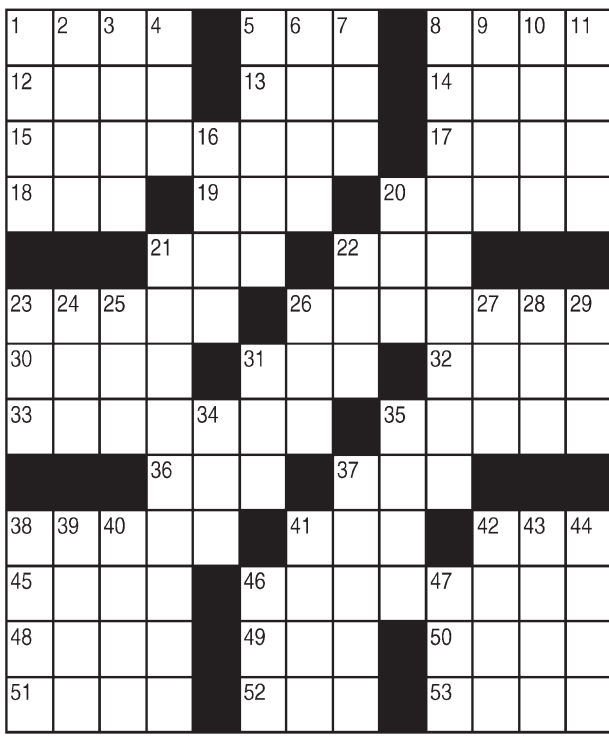


King Crossword

ACROSS

- 1 Piquant taste
- 5 Winter ailment
- 8 Painter Chagall
- 12 Thought
- 13 Arctic bird
- 14 Met melody
- 15 Slaughter
- 17 Vend
- 18 Type squares
- 19 Doctor's due
- 20 Any of 150 in the Bible
- 21 Doorstep item
- 22 Lemon meringue, e.g.
- 23 Sacrifice site
- 26 Spa fixture
- 30 The Red and the Black
- 31 Formal wear
- 32 Start a garden
- 33 Popular place to socialize
- 35 Heredity factors
- 36 Pick a target
- 37 Existed
- 38 Animal
- 41 Purse
- 42 Mauna —
- 45 Not pizzicato
- 46 "Manon" composer
- 48 Opposed
- 49 Pismire
- 50 Unaccompanied



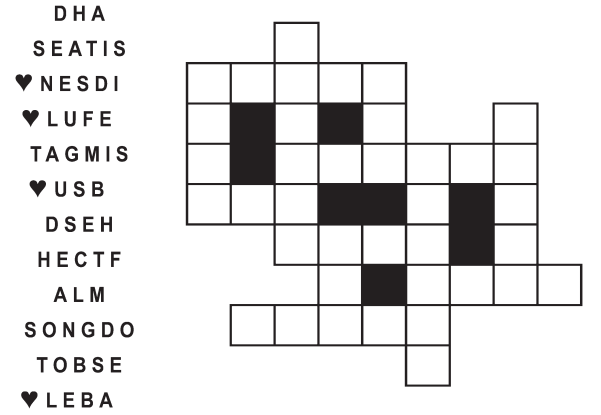
- 9 Vicinity
- 10 Small stream
- 11 At peace
- 16 Somewhere out there
- 20 Snapshot
- 21 Chief who befriended the Pilgrims
- 22 Latin for "peace"
- 23 Fire residue
- 24 Zodiac cat
- 25 Tit for —
- 26 Stick out
- 27 Buddhist sect
- 28 Wye follower
- 29 Egos' counterparts
- 31 Male turkey
- 34 Fruit stone
- 35 Jokes
- 37 Squander
- 38 False god
- 39 Sea eagle
- 40 Performances
- 41 Poison
- 42 Door opener
- 43 Morays, e.g.
- 44 On
- 46 Crazy
- 47 Superlative suffix

© 2018 King Features Synd., Inc.

FEAR KNOT

By: rj johnson

DOUBT? ... OR DARE!



Unscramble these twelve letter strings to form each into an ordinary word (ex. HAGNEC becomes CHANGE). Prepare to use only ONE word from any marked (♥) letter string as each unscrambles into more than one word (ex. ♥RATHE becomes HATER or EARTH or HEART). Fit each string's word either across or down to knot all twelve strings together.

NEW! 30 Fear Knot puzzles \$3.50 • Six Volumes • Order at rbmall.com

Puzzles4Kids

by Helene Hovanec

RIDDLE SEARCH - PIZZA!
Look up, down, and diagonally, both forward and backward to find every word on the list. Circle each one as you find it. When all the words are circled, take the UNUSED letters and write them on the blanks below. Go from left to right and top to bottom to find the answer to this riddle: **What is a young dog's favorite type of pizza?**

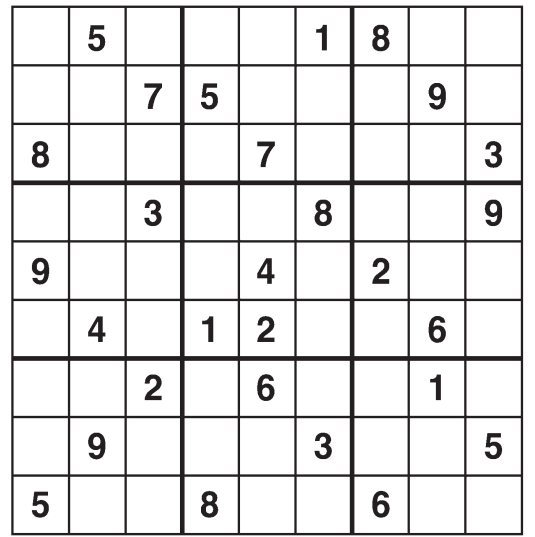


Riddle answer: _____

© 2018 King Features Synd., Inc.

Weekly SUDOKU

by Linda Thistle



Place a number in the empty boxes in such a way that each row across, each column down and each small 9-box square contains all of the numbers from one to nine.

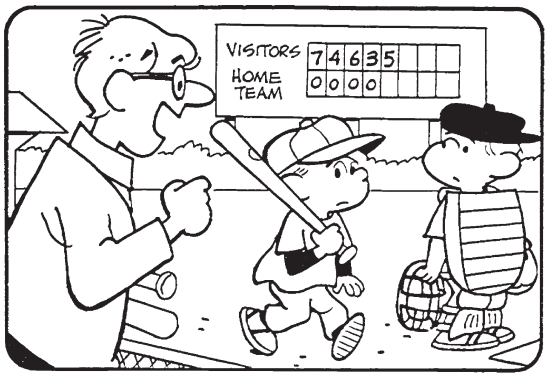
DIFFICULTY THIS WEEK: ♦♦

- ♦ Moderate
- ♦♦ Challenging
- ♦♦♦ HOO BOY!

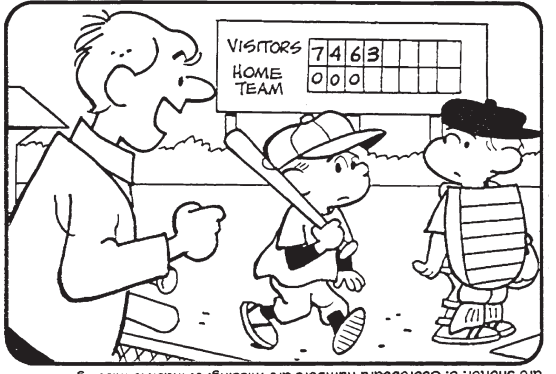
© 2018 King Features Synd., Inc.

HOCUS-FOCUS

BY HENRY BOLTIHOFF



Find at least six differences in details between panels.

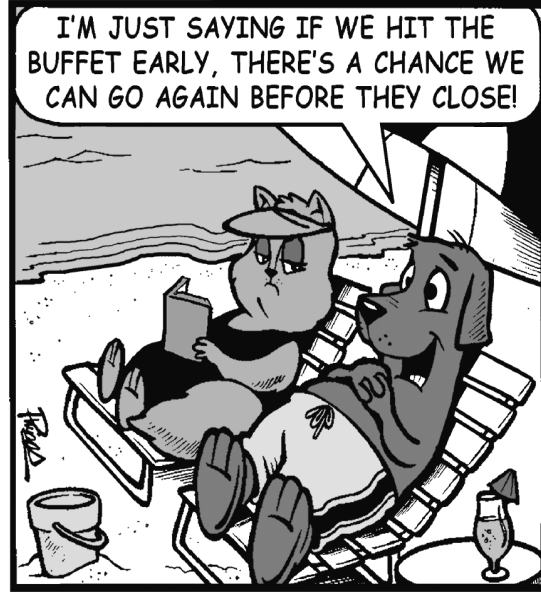


Differences: 1. Glasses are missing; 2. Arm is missing; 3. Bat is missing; 4. Pants are shorter; 5. Scoreboard numbers are missing; 6. Mask is missing.

HOCUS FOCUS puzzles \$3.50 • 30 Volumes • Order at: rbmall.com

Just Like Cats & Dogs

by Dave T. Phipps



MAGIC MAZE ● PATRICK



Find the listed words in the diagram. They run in all directions forward, backward, up, down and diagonally

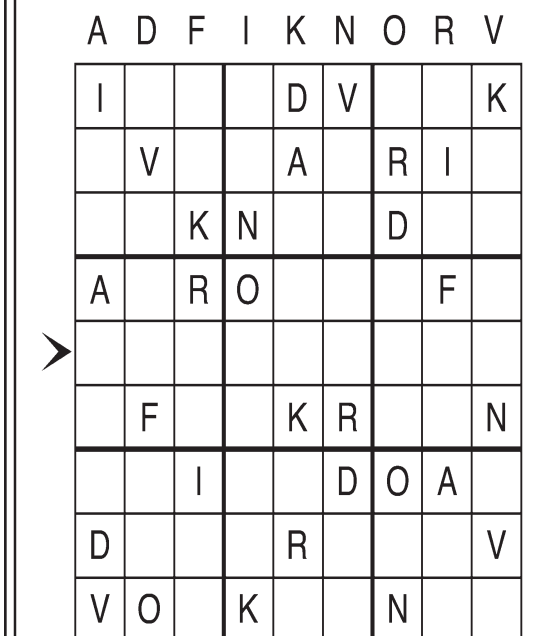
- Dempsey
- Ewing
- Galbraith
- Henry
- Leahy
- McEnroe
- McGoohan
- O'Neal
- Rafter
- Roy
- Star
- Stewart
- Swayze
- Warburton
- White

© 2018 King Features Syndicate, Inc. All rights reserved. Find More Word Search Puzzles • 6 Volumes \$3.50 ea. • Order at: rbmall.com

Letter Box

by Linda Thistle

Place a letter in the empty boxes in such a way that each row across, each column down and each small 9-box square contains all of the letters listed above the diagram. When completed, the row indicated will spell out a word or words.



© 2011 King Features Synd., Inc.

Even Exchange

by Donna Pettman

Each numbered row contains two clues and two 6-letter answers. The two answers differ from each other by only one letter, which has already been inserted. For example, if you exchange the A from MASTER for an I, you get MISTER. Do not change the order of the letters.

- 1. Coop youngster — H — — — — Press your mouse — L — — — —
- 2. Bring down L — — — — Lawnmower M — — — —
- 3. Curtain frill — U — — — — Charity lottery — A — — — —
- 4. Walk in a parade — — — C — — — Swamp — — — S — — —
- 5. Place a wager — — — M — — — Muddled words — — — R — — —
- 6. Drive the car — — — T — — — Translucent — — — H — — —
- 7. Feebler — — — — K — — — Loom user — — — — V — — —
- 8. Ice cream portion — — — C — — — One-masted sailboat — — — L — — —
- 9. Grocery store worker — — — G — — — Wisconsin's animal — — — D — — —
- 10. Lack of good sense — — — O — — — Young female horse — — — I — — —

© 2018 King Features Synd., Inc.

Salome's Stars

ARIES (March 21 to April 19) Your persistence pays off as the information you demanded starts to come through. The pace is slow at first, but it begins to speed up as the week draws to a close.

TAURUS (April 20 to May 20) An unwelcome bit of news jolts the Bovine, who would prefer that things proceed smoothly. But it's at most a momentary setback. A Leo brings more welcome tidings.

GEMINI (May 21 to June 20) You need to pay close attention to the details before making a commitment. Don't accept anything that seems questionable, unless you get an answer that can be backed up.

CANCER (June 21 to July 22) Congratulations on getting that project up and running. But as exciting as it is, don't let it carry you away. Make sure you set aside time to spend with family and friends.

LEO (July 23 to August 22) Be sure you are part of the discussion involving your suggestions. Your presence ensures that you can defend your work, if necessary. It also helps gain your colleagues' support.

VIRGO (August 23 to September 22) A misunderstanding needs to be dealt with, or it can grow and cause more problems later on. Be the bigger person and take the first step to clear the air.

LIBRA (September 23 to October 22) Set some strict guidelines for yourself so your heavier-than-usual work schedule doesn't overwhelm the time you need to spend relaxing with loved ones.

SCORPIO (October 23 to November 21) You might feel a little uncomfortable being among people you hardly know. But remember that today's strangers can become tomorrow's valuable contacts.

SAGITTARIUS (November 22 to December 21) Reward yourself for all that you've accomplished despite some annoying situations that got in your way. Enjoy a well-earned getaway with someone special.

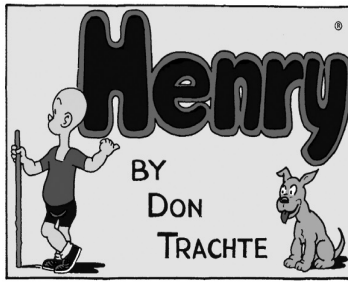
CAPRICORN (December 22 to January 19) Realizing that someone else is taking credit for what you did is bound to get anyone's goat, but especially yours. Be patient. The truth soon comes out.

AQUARIUS (January 20 to February 18) Forget about opposites attracting. What you need is to find someone who thinks like you and will support your ideas, even if others say they're too radical.

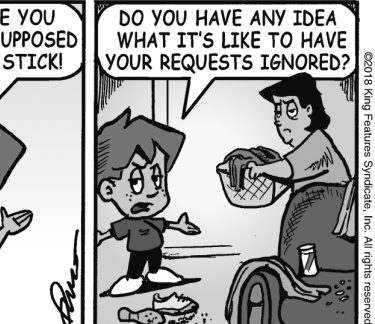
PISCES (February 19 to March 20) Workplace problems can affect your financial plans. Be prudent and avoid running up bills or making commitments until things begin to ease up by the 27th.

BORN THIS WEEK: Your intuition helps you communicate easily with people and understand their needs.

© 2018 King Features Synd., Inc.



Amber Waves



The Spats



© 2018 King Features Synd., Inc.