

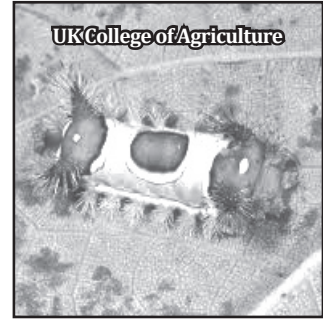


Eric Baker
Estill County Extension Agent for Agriculture & Natural Resources

Late season caterpillars are out in full force. Many use camouflage or secretive behavior to avoid predators. In contrast, stinging caterpillars have brittle, hollow spines connected to venom glands. These spines easily penetrate and break off in the skin. Then, the irritating

Watch Out for Stinging Caterpillars

venom goes to work. Reactions to the chemicals vary from slight irritation to pustules, inflammation, and intense pain. Contact usually comes when a person accidentally brushes against a caterpillar that they did not see.



The Saddleback

The saddleback or packsaddle caterpillar is one of the most familiar stinging caterpillars. It has prominent horns

on the front and rear. Its stings can cause severe irritation. Saddlebacks feed on deciduous trees such as basswood, chestnut, cherry, oak, and occasionally they can be found on corn.

Not all stingers provide a visual warning. For example, the hag moth caterpillar resembles a dried leaf. This brown caterpillar has nine pairs of fleshy lobes, all with stinging hairs. It is usually found on lower branches of assorted trees and shrubs, including oak, chestnut, dogwood, sassafras, and ash.

The tiny spines may be lifted from the skin with pieces of masking tape applied to the site. Do not

rub the area until they are removed. Wash the wound with soap and warm water. Place an ice pack or cold compress on the wound intermittently (15 minutes on and 15 minutes off). See a physician if there is a severe or persistent reaction to the toxin.

More information on stinging caterpillars is on the UK Entomology webpage at www.ca.uky.edu/entomology/entfacts/ef003.asp or call 723-4557.

Educational programs of the Cooperative Extension Service serve all people regardless of economic or social status and will not discriminate on the basis of race, color, ethnic origin, national origin, creed, religion, political belief, sex, sexual orientation, gender identity, gender expressions, pregnancy, marital status, genetic information, age, veteran status, or physical or mental disability.

Wishing Well®

3	4	3	5	2	5	3	4	7	8	4	3	7
E	P	X	F	W	L	P	E	N	V	R	L	E
2	7	3	8	3	5	3	6	8	6	4	5	3
I	W	O	I	R	O	E	L	S	O	F	W	N
7	3	8	7	2	8	6	5	2	5	8	5	3
F	E	I	O	D	T	V	I	E	N	N	G	W
8	3	5	8	3	5	6	5	4	8	2	5	8
E	I	W	W	D	I	E	T	E	P	N	H	L
6	5	8	5	2	7	8	4	8	3	5	3	6
U	C	A	H	T	U	C	C	E	E	A	A	P
8	6	2	4	5	4	2	4	2	6	5	6	2
S	H	H	T	R	L	O	I	U	E	M	L	G
3	7	4	7	6	2	7	4	7	2	7	2	7
S	N	F	D	D	H	F	E	A	T	M	S	E

HERE IS A PLEASANT LITTLE GAME that will give you a message every day. It's a numerical puzzle designed to spell out your fortune. Count the letters in your first name. If the number of letters is 6 or more, subtract 4. If the number is less than 6, add 3. The result is your key number. Start at the upper left-hand corner and check one of your key numbers, left to right. Then read the message the letters under the checked figures give you.

©2018 King Features Syndicate, Inc. All rights reserved.

CryptoQuip

This is a simple substitution cipher in which each letter used stands for another. If you think that X equals O, it will equal O throughout the puzzle. Solution is accomplished by trial and error.

Clue: P equals S

GLCH QTA FTRVBHE RGH

PVDF RGH BTARASVHS KTPRHE

TF GVP KSVCLRH KSTKHSRQ?:

"FT ESHP KLPVFD."

©2018 King Features Synd., Inc.

CryptoQuote

AXYDLBAAXR
is LONGFELLOW

One letter stands for another. In this sample, A is used for the three L's, X for the two O's, etc. Single letters, apostrophes, the length and formation of the words are all hints. Each week the code letters are different.

GLY QYFVUGI KE ANXXYAA

RA GK WY WKDYC WI QYKQUY

HLK NAYC GK AFNW IKN.

— UVCI OVDI VAGKD

©2018 King Features Synd., Inc.

Farming News

from Extension Agent Eric Baker

Thursday, September 6th @ 10:00am

Rinse & Return Program

The Rinse and Return Plastic Pesticide Container Recycling Program will be offered once again in Estill County this fall. This Kentucky Department of Agriculture program collects triple-rinsed, plastic pesticide containers for recycling. All farmers are encouraged to participate. Please remember, pesticide containers must be triple-rinsed, label packets removed, and no lids should be present. All containers received will be inspected.

The 2018 Rinse and Return collection date is Thursday, September 6th, 10:00 a.m. to noon at the Estill County Extension Office, 76 Golden Court (off Stacy Lane) in Irvine. For more information, call 723-4557.

Thursday, September 6th @ 4:30pm

Stockpiling Tall Fescue

Forage producers are invited to join the Kentucky Forage and Grassland Council at the Morehead State University farm September 6th. Registration begins at 4:30 p.m., with the program beginning at 5:15 p.m. Pre-register for this free event by visiting internet site <https://18KFGCFieldDayEast.eventbrite.com>.

Thursday, September 20th @ 10:00am

Pawpaw & Horticulture Event

You are invited to Kentucky State University's Third Thursday Thing on Thursday, September 20th, at 10:00 a.m. This agriculture event focuses on pawpaws and horticulture.

Americanisms



"If it looks like a duck, walks like a duck and quacks like a duck, then it just may be a duck."

—Walter Reuther

©2018 King Features Syndicate, Inc.

Stickeler's Puzzle

STICKELERS [sic]

by Terry Stickels

There is only one way to write the number 1 as a sum of the reciprocals of three different positive integers.

What are those three fractions?

©2018 King Features Syndicate

Stickeler's Answer on Page 11



Wormwood



This perennial herb has been valued since ancient times as a remedy for getting rid of worms and other parasites, as an antiseptic, an antidiarrhetic and to help regulate the menstrual cycle. It is also used to treat stomach, intestinal, liver and kidney problems. The plant is rich in oils such as absinthium, absinthol and thujone. It will grow in full sun to partial shade.

- Brenda Weaver

Source: www.seed-bank.ca



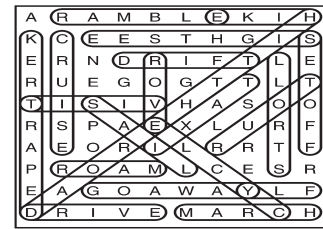
Chickadees

A Carolina Chickadee graced my yard the other day. These tiny birds are easy to identify by their black cap and white cheeks. While chickadees love suet, sunflower chips and peanuts, this little fellow feasted on safflower seed from a hanging tray feeder. I was thrilled to have him.

E-mail: birdingbits@cfl.rr.com
©2015 King Features Syndicate, Inc.

Puzzles4Kids

Answer



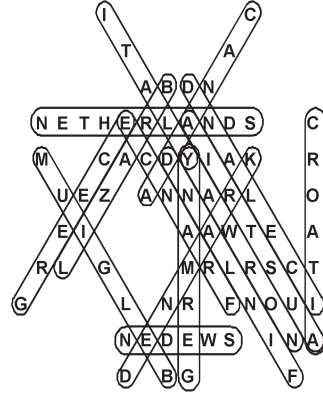
Riddle Answer:
An eggs-ploer.

Letter Box

Solution

P	D	O	E	T	H	C	B	U
H	T	U	P	C	B	E	O	D
C	B	E	U	D	O	P	T	H
T	C	H	B	E	D	U	P	O
E	P	B	O	U	C	H	D	T
O	U	D	H	P	T	B	E	C
B	O	T	C	H	E	D	U	P
D	H	P	T	B	U	O	C	E
U	E	C	D	O	P	T	H	B

TOP COFFEE-CONSUMING COUNTRIES



CryptoQuip

answer
Have you noticed the sign the couturier posted on his private property?:
"No dress passing."

CryptoQuote

answer
The penalty of success is to be bored by people who used to snub you.
— Lady Mary Astor

FEAR & KNIGHT

answer



Even Exchange

- answers
1. Faster, Fasten
 2. Groan, Grown
 3. Clark, Clerk
 4. Linger, Ginger
 5. Julie, Julia
 6. Blast, Beast
 7. Diver, Dover
 8. Squirm, Squirt
 9. Flesh, Fresh
 10. Dipper, Dapper

Weekly SUDOKU

Answer

1	9	5	6	3	4	7	2	8
6	7	3	8	5	2	9	4	1
8	2	4	9	1	7	5	6	3
2	1	9	5	7	3	6	8	4
4	6	8	1	2	9	3	5	7
3	5	7	4	8	6	1	9	2
9	3	1	2	6	8	4	7	5
7	8	6	3	4	5	2	1	9
5	4	2	7	9	1	8	3	6

King Crossword

Answers

Solution time: 27 mins.



Bible Trivia Answers

Now available by Wilson Casey! 2017 Bible Trivia box calendar loaded with daily teasers.

ANSWERS (1) Old; (2) Noon; (3) Baker; (4) Michael; (5) Bread; (6) Plant

Century 21
Advantage Realty,
a Robinson Company

MLS REALTOR

WILLIS ESTES
Associate Broker
Cell: 859-582-3731
westes@century21advantage.com
Serving Estill County over 18 Years

The highest compliment my clients can give me is the referral of their friends, family and business partners.

Thank you!