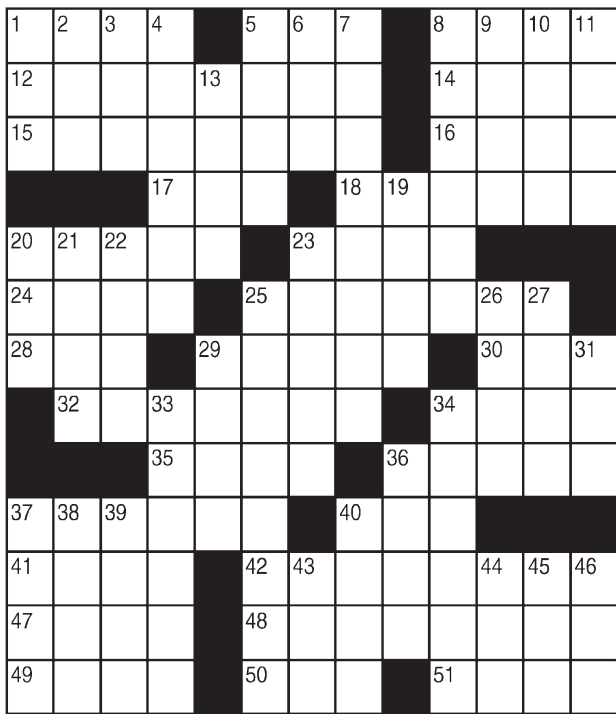


King Crossword

ACROSS

- 1 — up (invigorates)
- 5 Alphabet start
- 8 "Pygmalion" writer
- 12 Spine component
- 14 Unadulterated
- 15 Language of Zagreb
- 16 Rod's partner
- 17 Cudgel
- 18 Wedding-related
- 20 Pirate flag symbol
- 23 Tempo
- 24 Grow weary
- 25 AT&T competitor
- 28 Coatrack piece
- 29 Oyster's gift
- 30 Mediterranean, for one
- 32 Porch
- 34 Blueprint
- 35 "Sad to say ..."
- 36 Combination of tones
- 37 Desert fox
- 40 — carte
- 41 Out of control
- 42 Exact
- 47 Streamlet
- 48 Taboo
- 49 A Great Lake



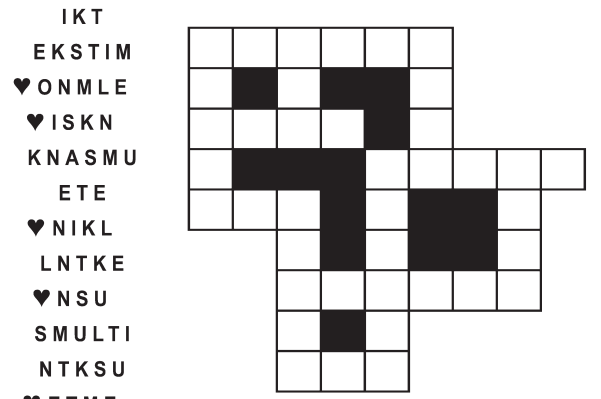
- 10 Neighbor-hood
- 11 Healthy
- 13 And others (Lat.)
- 19 Bar
- 20 Fuel additive brand
- 21 Capital of Ukraine
- 22 Incite
- 23 Rosary components
- 25 Large blood vessel
- 26 Capital of Norway
- 27 Approach
- 29 Wan
- 31 Additionally
- 33 Irritate
- 34 Lighthouse of Alexandria
- 36 Organization
- 37 Passenger's payment
- 38 Eastern
- 39 — me tangere
- 40 Farm measure
- 43 Animation frame
- 44 Consumed
- 45 Golf gadget
- 46 Conclusion

© 2018 King Features Synd., Inc.

FEAR & KNOT

By: rj johnson

DOUBT? ... OR DARE!



Unscramble these twelve letter strings to form each into an ordinary word (ex. HAGNEC becomes CHANGE). Prepare to use only ONE word from any marked (♥) letter string as each unscrambles into more than one word (ex. ♥RATHE becomes HATER or EARTH or HEART). Fit each string's word either across or down to knot all twelve strings together.

Puzzles4Kids

by Helene Hovanec

CODED RIDDLE

Change each letter to the one that comes immediately BEFORE it in the alphabet to find a riddle and its answer.

Here's a copy of the alphabet to guide you:

ABCDEFGHIJKLMNOPQRSTUVWXYZ

X I Z E P L J E T X F B S H M B T T F T

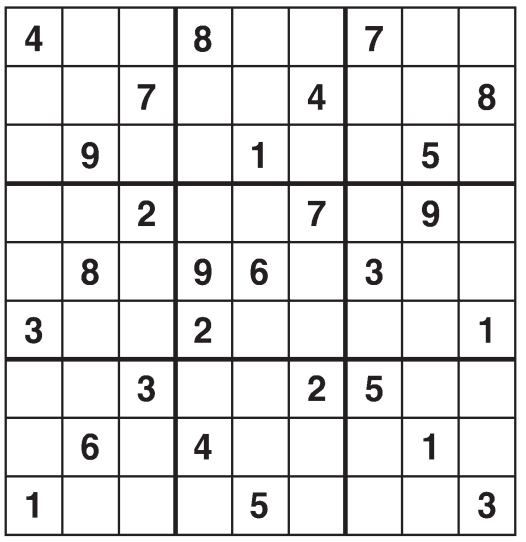
J O N B U I D M B T T ? J U J N Q S P W F T

E J - W J T J P O .

© 2018 King Features Synd., Inc.

Weekly SUDOKU

by Linda Thistle



Place a number in the empty boxes in such a way that each row across, each column down and each small 9-box square contains all of the numbers from one to nine.

DIFFICULTY THIS WEEK: ♦♦♦

- ♦ Moderate
- ♦♦ Challenging
- ♦♦♦ HOO BOY!

© 2018 King Features Synd., Inc.

HOCUS-FOCUS

BY HENRY BOLTINOFF



Find at least six differences in details between panels.



Differences: 1. Sign is missing. 2. Collar is different. 3. Cloud is different. 4. Basket weave is different. 5. Beads are missing. 6. Sleeve is shorter.

Just Like Cats & Dogs

by Dave T. Phipps



MAGIC MAZE ● AMY

O W T Q N J G D A X U R O L J
 G D A X V S P N K I F C A X N
 V S Q O L J H E C A N X S A V
 C T R P N G E L J H O R M F D
 A B Y W I N E H O U S E A X V
 R T R P O I L M K I N L D I G
 T E D B T V Z L R N H H A X W
 E R N N N R U A E T O E R Q O
 R N A A L I D R J W J O I G F
 D R Y M T E B C D N O P A Y X
 G R E H S I F W V T J L S R P

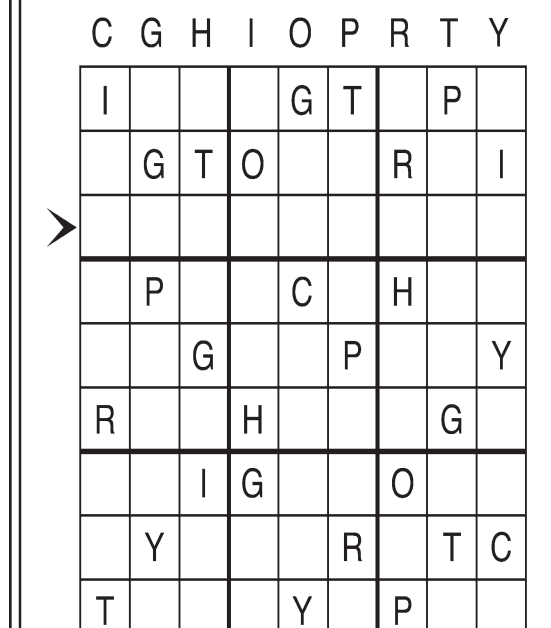
- Adams Irving Poehler Smart
- Brenneman Jo Johnson Pond Tan
- Fisher Lee Ryan Winehouse
- Grant Lowell Sedaris

© 2018 King Features Syndicate, Inc. All rights reserved.

Letter Box

by Linda Thistle

Place a letter in the empty boxes in such a way that each row across, each column down and each small 9-box square contains all of the letters listed above the diagram. When completed, the row indicated will spell out a word or words.



© 2011 King Features Synd., Inc.

Even Exchange

by Donna Pettman

Each numbered row contains two clues and two 6-letter answers. The two answers differ from each other by only one letter, which has already been inserted. For example, if you exchange the A from MASTER for an I, you get MISTER. Do not change the order of the letters.

- | | | | |
|---------------------------|-------------|--------------------|-------------|
| 1. Visitor | G _ _ _ _ _ | Mission | Q _ _ _ _ _ |
| 2. Ripen | M _ _ _ _ _ | Wildlife and flora | N _ _ _ _ _ |
| 3. Forward facing | _ _ _ _ T _ | Fern leaf | _ _ _ _ D _ |
| 4. Flintstone's neighbor | _ _ _ B _ _ | Rolling noise | _ _ _ M _ _ |
| 5. Judy Sheindlin's job | J _ _ _ _ _ | Sweet treat | F _ _ _ _ _ |
| 6. Harry or Beatrix | _ _ _ T _ _ | Songwriter Cole | _ _ _ R _ _ |
| 7. Vanna or Betty | _ _ _ T _ _ | Moan and complain | _ _ _ N _ _ |
| 8. Paper fastener | _ _ _ P _ _ | Flicka's apartment | _ _ _ B _ _ |
| 9. Sharpened one's skills | _ _ _ D _ _ | Bee's product | _ _ _ Y _ _ |
| 10. Resurrect | _ _ _ V _ _ | Edit a document | _ _ _ S _ _ |

© 2018 King Features Synd., Inc.

Salome's Stars

ARIES (March 21 to April 19) You might need to get more facts to help you work out those problems with your new project. As always, a friendly approach shows the charming Arian at his or her persuasive best.

TAURUS (April 20 to May 20) Information is what energizes ambition, and this is a good time for the ambitious Bovine to expand his or her range of knowledge and to be ready for the challenges that lie ahead.

GEMINI (May 21 to June 20) This is a good time to consider making some long-overdue decorating changes at home or in your workplace. A splash of color can help raise spirits, even on the grayest day.

CANCER (June 21 to July 22) Learn more. Earn more. That's the formula for Moon Children looking to expand their career horizons. Investigate the best places to get those training courses you'll need.

LEO (July 23 to August 22) Your creative side helps gain attention for many of your ideas. But don't neglect the practical aspects involved in implementing their move from paper to production. Good luck.

VIRGO (August 23 to September 22) A health problem should not be ignored. The sooner you check it out, the sooner you can deal with it and then move on. Some job advice comes from an unlikely source.

LIBRA (September 23 to October 22) A relationship takes an unexpected shift that could leave you puzzled and hurt. Asking for an explanation could help uncover the reason for this sudden turn of events.

SCORPIO (October 23 to November 21) Your busy schedule has drawn down much of your energy levels. Restore them by spending a well-earned time out enjoying the arts — perhaps with that special someone.

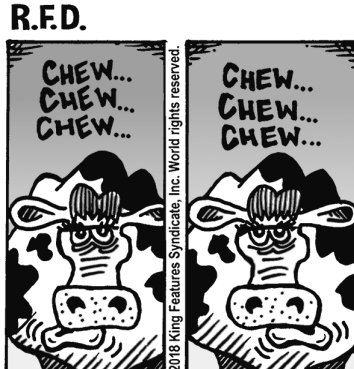
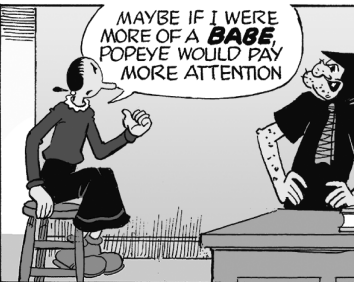
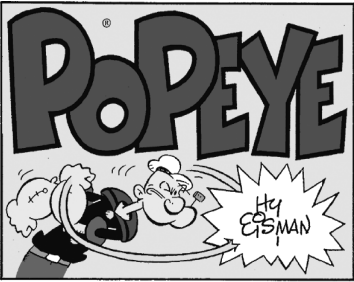
SAGITTARIUS (November 22 to December 21) Make that presentation with confidence. Remember: When you show you believe in yourself, it helps persuade others that you truly know what you're doing.

CAPRICORN (December 22 to January 19) Although you usually prefer doing things on your own, a group effort might be advisable at this time. Try to keep an open mind about suggestions from colleagues.

AQUARIUS (January 20 to February 18) This could be a good time to reassess some of your recent decisions and see if any adjustments should be made based on facts that you might have just uncovered.

PISCES (February 19 to March 20) An emotionally charged situation creates uncertainty about the future of your relationship. Best advice: Talk things out while there's still time to reach a new understanding.

BORN THIS WEEK: You tend to act on matters of principle despite what others might advise.



Amber Waves



The Spats



by Jeff Pickering

