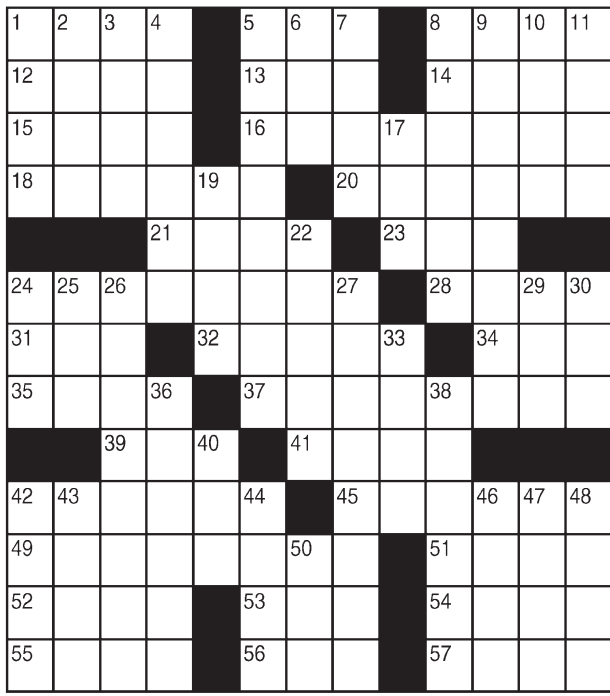


# King Crossword

**ACROSS**

- 1 Nickelodeon's explorer
- 5 Phonograph stat
- 8 — podrida
- 12 Acknowledge
- 13 "Born in the —"
- 14 Tide type
- 15 Korea-based sitcom
- 16 Laterally
- 18 Tartan patterns
- 20 Go by
- 21 "Star Wars" princess
- 23 Saute
- 24 Motorcycle attachments
- 28 Consider
- 31 Historic period
- 32 Prepare to pray
- 34 Chicken-king link
- 35 Weaver's filling thread
- 37 Revolvers, e.g.
- 39 Air safety org.
- 41 Soon to come
- 42 Coral rings
- 45 Money, slangily
- 49 Secondary job
- 51 Anger
- 52 Infamous ldi
- 53 Enjoyment



- 54 At a snail's pace
- 55 Hide
- 56 Explosive stick
- 57 Spud's buds
- DOWN**
- 1 Moist
- 2 Elliptical
- 3 Parks of civil rights fame
- 4 For some time
- 5 Muscovites et al.
- 6 Omega preceder
- 7 Put together
- 8 Ahead
- 9 2012, but not 2013
- 10 Potato chip brand
- 11 Church section
- 17 Sprite
- 19 Pack of cards
- 22 "The results —"
- 24 Stitch
- 25 Anger
- 26 Jonquil's cousin
- 27 Dregs
- 29 Shady tree
- 30 More, to Manuel
- 33 Toy block name
- 36 Skill
- 38 Richard III's cry
- 40 The whole enchilada
- 42 Pronto, on a memo
- 43 Fourth dimension
- 44 Winnow
- 46 Easter emblem
- 47 Lotion additive
- 48 Chops
- 50 Convent denizen

© 2019 King Features Synd., Inc.

# FEAR & KNIGHT

By: rj johnson

DOUBT? ... OR DARE!

**ONE ELAMIC**

♥ RHCLU

♥ OCLO

**ANELUS**

♥ ILE

♥ CMHU

♥ RAMLO

**ILO**

**ELICUS**

♥ EIDOL

**LMLO**

Unscramble these twelve letter strings to form each into an ordinary word (ex. **HAGNEC** becomes **CHANGE**). Prepare to use only **ONE** word from any marked (♥) letter string as each unscrambles into more than one word (ex. ♥**RATHE** becomes **HATER** or **EARTH** or **HEART**). Fit each string's word either across or down to knot all twelve strings together.

©2019 King Features Syndicate. All rights reserved.

# Puzzles4Kids

by Helene Hovanec

**CRISSCROSS - ONE-WORD SENTENCES**  
Each word will fit into one spot in the grid. Use the starting letters as a guide and fit each word into its spot. All words will be used, so cross off each one after you put it into the grid.

3 Letters: DUH, RUN, YUK

4 Letters: GOSH, HERE, OUCH, WAIT, WHEE, YEAH

5 Letters: CATCH, GREAT, HELLO, LATER, NEVER, SORRY, SWELL, WHERE, WHICH

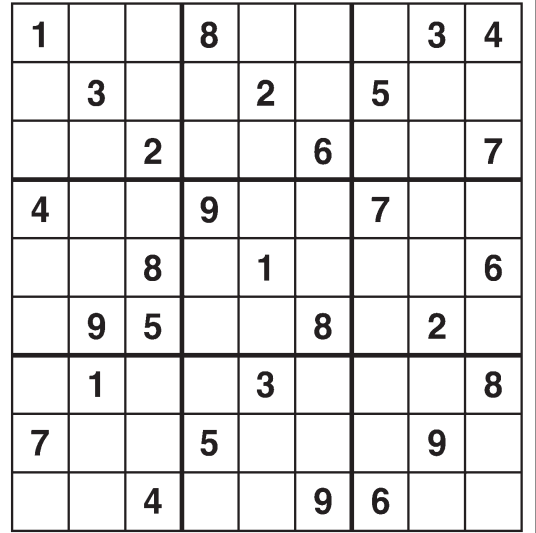
6 Letters: LISTEN, THANKS

7 Letters: AMAZING, AWESOME

©2019 King Features Syndicate, Inc. All rights reserved.

# Weekly SUDOKU

by Linda Thistle



Place a number in the empty boxes in such a way that each row across, each column down and each small 9-box square contains all of the numbers from one to nine.

**DIFFICULTY THIS WEEK: ♦♦**

♦ Moderate ♦♦ Challenging  
♦♦♦ HOO BOY!

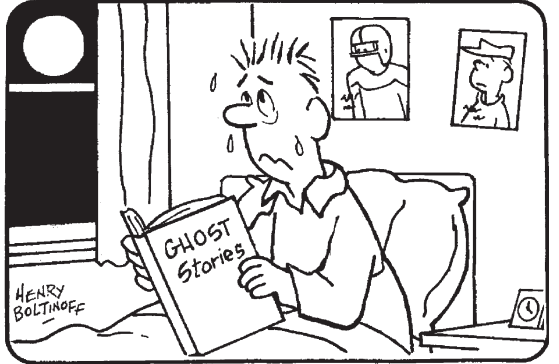
© 2019 King Features Synd., Inc.

# HOCUS-FOCUS

BY HENRY BOLTINOFF



Find at least six differences in details between panels.



Differences: 1. Pajamas are different; 2. Moon is higher; 3. Hair is different; 4. One picture is missing; 5. Headboard is lower; 6. No. 7 is missing from picture.

# Just Like Cats & Dogs

by Dave T. Phipps



# Even Exchange

by Donna Pettman

Each numbered row contains two clues and two 6-letter answers. The two answers differ from each other by only one letter, which has already been inserted. For example, if you exchange the A from **MASTER** for an I, you get **MISTER**. Do not change the order of the letters.

1. Say again	___ P ___	Warm up in the oven	___ H ___
2. Take to the altar	___ R ___	TV's Povich	___ U ___
3. Of the ear	___ O ___	Financial review	___ T ___
4. Planting season	___ G ___	Short, fast race	___ T ___
5. Wave peak	___ S ___	Slithered around	___ P ___
6. Bank employee	___ E ___	More statuesque	___ A ___
7. Earthly	___ L ___	Mason's mixture	___ R ___
8. Discovered	F ___	Circular	R ___
9. Pastry maker	___ A ___	Cyclist	___ I ___
10. Eliminate	___ V ___	TV accessory	___ T ___

© 2019 King Features Synd., Inc.

# MAGIC MAZE

INSERT A "P" TO MAKE A NEW WORD

D I F C Z W C U R P M J H E C  
 Z X U N S M A L C S Q G N T L  
 J G E C O Z R X V L N T R C P  
 N L J H R I E E N I A R R E T  
 C A Y W T C T V Y O T G D S R  
 R P G N I H S A L S N N E N E  
 L K I L N G L E V Y C I T I X  
 B Z S X G T W U S I A L E R E  
 P O M L U J I G E D R L L B L  
 A Y X O W U T G N I D E E S A  
 S Q P O N L K J H G F S D R M

Find the listed words in the diagram. They run in all directions forward, backward, up, down and diagonally.

Carets Exert Seeding Soil  
 Clams Male Selling Sorting  
 Deleted Outlaying Slashing Terrain  
 Derivation Relay Slice

©2019 King Features Syndicate, Inc. All rights reserved.

# Letter Box

by Linda Thistle

Place a letter in the empty boxes in such a way that each row across, each column down and each small 9-box square contains all of the letters listed above the diagram. When completed, the row indicated will spell out a word or words.

A B H I L M N T U

	I	H	M	L		
	U	N	A	B		
A		T			N	
B		I		L		
	L	M	B	A		
H	M		N		I	
		N		I	H	T
I	A	H				M

➤

© 2012 King Features Synd., Inc.

# Salome's Stars

**ARIES** (March 21 to April 19) Seeing the silly side of some really ridiculous situations helps give the Lamb a new perspective on how to handle them. Some important contacts can be made this weekend.

**TAURUS** (April 20 to May 20) Try to complete your outstanding tasks by midweek. This leaves you free to take advantage of new possibilities -- both professional and personal -- opening up by week's end.

**GEMINI** (May 21 to June 20) With both your creative side and your energy levels rising this week, you should be able to tackle that too-long-neglected project again. A family member might have important news.

**CANCER** (June 21 to July 22) An explanation you requested seems to be more confusing than enlightening. You should insist on clarifications now, rather than deal with problems that might arise later.

**LEO** (July 23 to August 22) Your energy levels might be ebbing a bit. But that's no excuse for taking catnaps when you could be working on those unfinished tasks. There'll be time to curl up and relax by week's end.

**VIRGO** (August 23 to September 22) It's a good time to get those ideas out of your head and into a readable format if you hope to have them turned into something doable. A good friend is ready with worthwhile advice.

**LIBRA** (September 23 to October 22) Careful -- you might be stepping into dangerous territory if you decide to "exaggerate" the facts too much. Remember: The truth speaks for itself and needs no embellishment.

**SCORPIO** (October 23 to November 21) Although your workplace successes have earned you many admirers, there are some colleagues who are not among them. Be careful how you proceed with your new project.

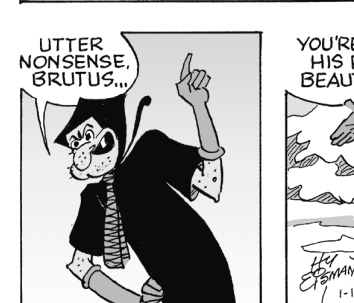
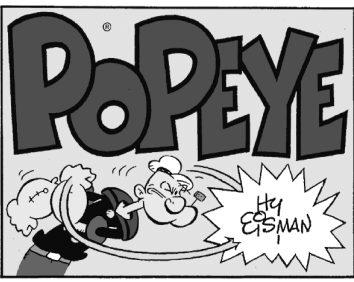
**SAGITTARIUS** (November 22 to December 21) You might have to go into great detail to explain why you're currently reluctant to make changes to an already prepared plan. Be sure you have all the facts to back yourself up.

**CAPRICORN** (December 22 to January 19) Travel plans might still be uncertain. But instead of getting upset about the delay, open yourself up to other possibilities, and begin checking out some alternative destinations.

**AQUARIUS** (January 20 to February 18) Changing conditions might require you to alter some of your plans. While you might be agreeable to this, be prepared with explanations for those who do not want changes made.

**PISCES** (February 19 to March 20) Although you might have to deal with some detractors who aren't too kind in their critiques, you gain points when you're willing to stand up and defend your work.

**BORN THIS WEEK:** You have a gift for creating a warm and loving environment between yourself and others.



© 2019 King Features Syndicate, Inc. All rights reserved.

© 2019 King Features Syndicate, Inc. All rights reserved.

© 2019 King Features Syndicate, Inc. All rights reserved.