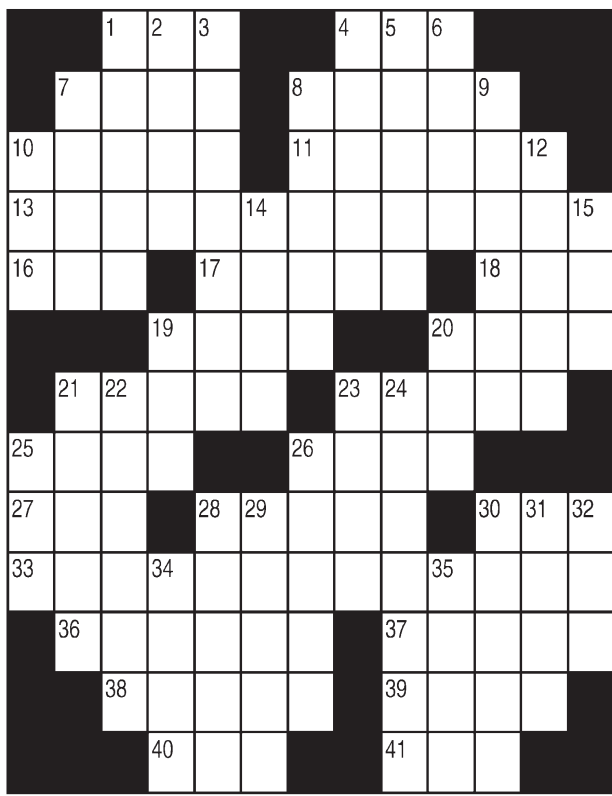


King Crossword

ACROSS

- 1 Sleuth, slangily
- 4 Pod dweller
- 7 Crafty
- 8 Equilibrium
- 10 Overuse the mirror
- 11 Motor
- 13 Fee for work done
- 16 Officeholders
- 17 Break a Commandment
- 18 Sphere
- 19 Diminish
- 20 Small blister
- 21 Milky stones
- 23 Young turkey
- 25 Profess
- 26 Science workshops
- 27 Pooch
- 28 Paris river
- 30 Cleopatra's slayer
- 33 Navy, with "The"
- 36 Seriously loyal
- 37 Madagascar critter
- 38 Surrounds
- 39 Thing
- 40 CSA boss
- 41 Affirmative action?



DOWN

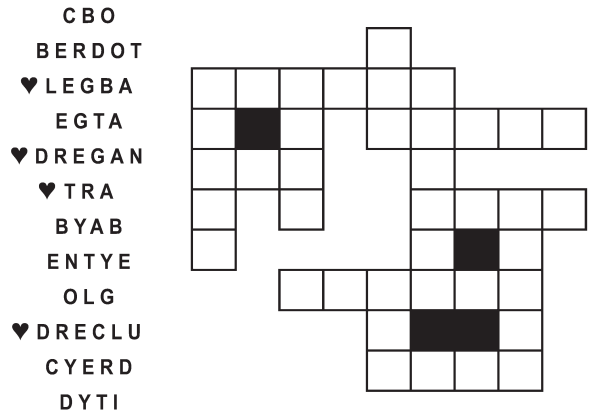
- 1 Layers
- 2 Ht.
- 3 Sneeringly doubtful
- 4 — de Leon
- 5 Square dance quorum
- 6 Europe's neighbor
- 7 Small songbird
- 8 Annoyance
- 9 Sign up
- 10 Greek letter
- 12 Heron's kin
- 14 Swindles
- 15 Recede
- 19 "This means —!"
- 20 Urban transport
- 21 Egg-shaped
- 22 Pirate costume feature
- 23 Sheet of glass
- 24 Ohio college
- 25 Billboards
- 26 Rosters
- 28 Sleep soundly?
- 29 Chopin piece
- 30 Picked a target
- 31 Pond gunk
- 32 Apiece
- 34 Satan's forte
- 35 Kill a bill

© 2019 King Features Synd., Inc.

FEAR & KNIGHT

By: rj johnson

DOUBT? ... OR DARE!



Unscramble these twelve letter strings to form each into an ordinary word (ex. HAGNEC becomes CHANGE). Prepare to use only ONE word from any marked (♥) letter string as each unscrambles into more than one word (ex. ♥RATHE becomes HATER or EARTH or HEART). Fit each string's word either across or down to knot all twelve strings together.

Puzzles4Kids

by Helene Hovanec

WORD FUN

Study the two words on each line to find the ONE letter in the left column that is NOT in the word in the right column. Write the extra letter on the blank space. Then read DOWN to answer this riddle:

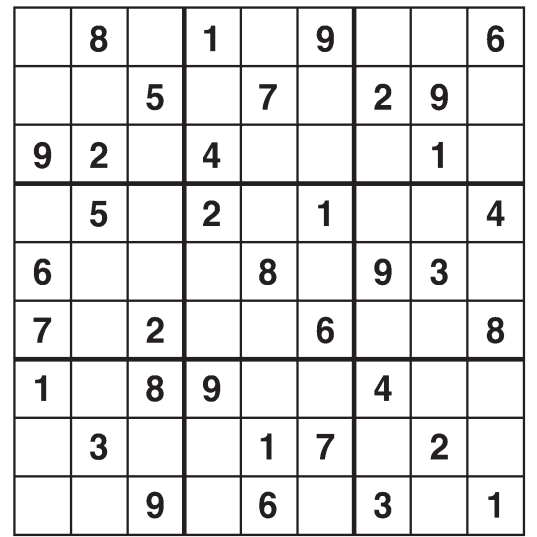
WHAT DID THE BOY SHEEP SAY TO THE GIRL SHEEP ON VALENTINE'S DAY?

- | | | | | | |
|--------|-----|-------|--------|-----|-------|
| DIAPER | ___ | PARED | ISRAEL | ___ | LIARS |
| ALERTS | ___ | TEARS | WRITHE | ___ | THEIR |
| BOOING | ___ | BINGO | PANELS | ___ | PLANS |
| SNIVEL | ___ | LINES | | | |
| STEVEN | ___ | VENTS | | | |

© 2019 King Features Synd., Inc.

Weekly SUDOKU

by Linda Thistle



Place a number in the empty boxes in such a way that each row across, each column down and each small 9-box square contains all of the numbers from one to nine.

DIFFICULTY THIS WEEK: ♦

- ♦ Moderate
- ♦♦ Challenging
- ♦♦♦ HOO BOY!

© 2019 King Features Synd., Inc.

Just Like Cats & Dogs

by Dave T. Phipps



© 2019 King Features Syndicate, Inc. All rights reserved.

Even Exchange

by Donna Pettman

Each numbered row contains two clues and two 6-letter answers. The two answers differ from each other by only one letter, which has already been inserted. For example, if you exchange the A from MASTER for an I, you get MISTER. Do not change the order of the letters.

- | | | | | | | | | | |
|------------------------|-----|-----|-----|-----|-----|----------------------|-----|-----|-----|
| 1. Oz bigwig | W | ___ | ___ | ___ | ___ | Iguana or gecko | L | ___ | ___ |
| 2. Catwalk participant | ___ | ___ | L | ___ | ___ | Cable company box | ___ | ___ | M |
| 3. Li'l Abner's mama | ___ | N | ___ | ___ | ___ | Scapegoat | ___ | T | ___ |
| 4. Tremble from cold | ___ | H | ___ | ___ | ___ | Splinter | ___ | L | ___ |
| 5. Use glue | ___ | ___ | E | ___ | ___ | Penne or ravioli | ___ | ___ | A |
| 6. Jesse or Thurber | J | ___ | ___ | ___ | ___ | Tones down the beast | T | ___ | ___ |
| 7. Carefully divvy up | ___ | ___ | N | ___ | ___ | Math comparisons | ___ | ___ | S |
| 8. Darns socks | ___ | ___ | D | ___ | ___ | Restaurant lists | ___ | ___ | U |
| 9. Election day lineup | ___ | L | ___ | ___ | ___ | Wyoming or Arkansas | ___ | T | ___ |
| 10. Feeling healthier | ___ | E | ___ | ___ | ___ | Toast topping | ___ | ___ | U |

© 2019 King Features Synd., Inc.

HOCUS-FOCUS

BY HENRY BOLTINOFF



Find at least six differences in details between panels.



Differences: 1. Lady's hat is different. 2. Boy is smiling. 3. House window is different. 4. Stone wall has become a fence. 5. Mom's collar is different. 6. Mom's nose is changed.

MAGIC MAZE • "DEM DRY BONES"

DEBXUROKLIBYVS
 QNNKHEENBYWTROL
 J(SHOULDER)GEBYWL
 URPNNSKAEKIGDBEZ
 XVSQONEUTMKIIGE
 CAYWAHSTCQKPLN
 LJHFEFGOCIEK CAB
 AYXVUSIQJZRNPEN
 MKJHFEHHEWCINHN
 BZYXVUTOOFJHPOT
 RQPOMLKITHGSESC

Find the listed words in the diagram. They run in all directions forward, backward, up, down and diagonally

- | | | | |
|-----------|------|--------------|-----------|
| Ankle | Foot | J.W. Johnson | Spiritual |
| Back | Head | Knee | Thigh |
| Connected | Heal | Neck | Toe |
| Ezekiel | Hip | Shoulder | |

© 2019 King Features Syndicate, Inc. All rights reserved.

Letter Box

by Linda Thistle

Place a letter in the empty boxes in such a way that each row across, each column down and each small 9-box square contains all of the letters listed above the diagram. When completed, the row indicated will spell out a word or words.



© 2012 King Features Synd., Inc.

Salome's Stars

ARIES (March 21 to April 19) Some unsettling facts about a past situation could come to light. And while you'd love to deal with it immediately, it's best to get more information to support your case.

TAURUS (April 20 to May 20) A straightforward approach to a baffling situation is best. Don't allow yourself to be drawn into an already messy mass of tangles and lies. Deal with it and move on.

GEMINI (May 21 to June 20) Don't be discouraged or deterred by a colleague's negative opinion about your ideas. It could actually prove to be helpful when you get around to finalizing your plan.

CANCER (June 21 to July 22) Ignore that sudden attack of "modesty," and step up to claim the credit you've so rightly earned. Remember: A lot of people are proud of you and want to share in your achievement.

LEO (July 23 to August 22) A financial "deal" that seems to be just right for you Leos and Leonas could be grounded more in gossamer than substance. Get an expert's advice to help you check it out.

VIRGO (August 23 to September 22) Don't ignore that suddenly cool or even rude attitude from someone close to you. Asking for an explanation could reveal a misunderstanding you were completely unaware of.

LIBRA (September 23 to October 22) Unless you have sound knowledge, and not just an opinion, it's best not to step into a family dispute involving a legal matter, regardless of whom you support. Leave that to the lawyers.

SCORPIO (October 23 to November 21) An awkward situation presents the usually socially savvy Scorpion with a problem. But a courteous and considerate approach soon helps clear the air and ease communication.

SAGITTARIUS (November 22 to December 21) A calmer, less-tense atmosphere prevails through much of the week, allowing you to restore your energy levels before tackling a new challenge coming up by week's end.

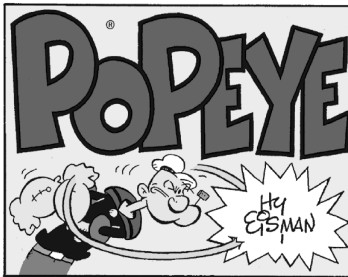
CAPRICORN (December 22 to January 19) Your approach to helping with a friend or family member's problem could boomerang unless you take time to explain your method and how and why it (usually!) works.

AQUARIUS (January 20 to February 18) Someone who gave you a lot of grief might ask for a chance for the two of you to make a fresh start. You need to weigh the sincerity of the request carefully before giving your answer.

PISCES (February 19 to March 20) Too much fantasizing about an upcoming decision could affect your judgment. Better to make your choices based on what you know now rather than on what you might learn later.

BORN THIS WEEK: You have a way of seeing the best in people and helping them live up to their potential.

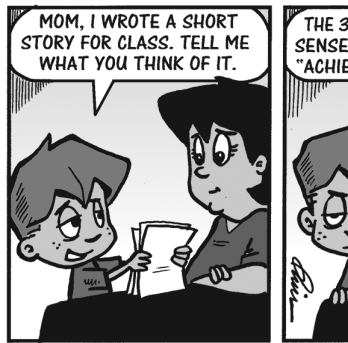
© 2018 King Features Synd., Inc.



R.F.D.



Amber Waves



The Spats



© 2018 King Features Synd., Inc.