

Eric Baker
Estill County Extension Agent for Agriculture & Natural Resources

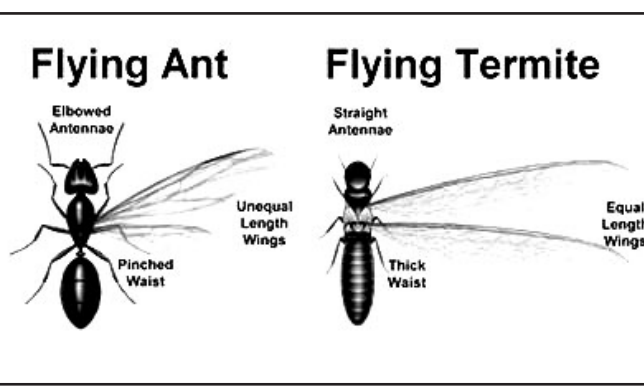
Protect Your Home From Termites

piers, sills and floor joists. Termites make these mud tunnels to travel between underground colonies and your home. Another sign of an infestation is damaged wood hollowed out along the grain with dried bits of mud or soil lining the feeding galleries.

Termite feeding, and resulting damage, can remain undetected in exposed wood because the outer surface usually is left intact. Many infestations result from direct contact between structural wood and the soil, which gives termites access to food, moisture, shelter and provides a hidden entry into your home. Make sure to have at least six inches between the ground level and wood siding, porch steps, latticework, door or window frames, posts and similar wooden elements. Contrary to popular belief, pressure-treated wood isn't immune to infestation, because termites will enter through cut ends or cracks and build tunnels over the surface to susceptible wood above.

Since termites are attracted to moisture, they are more likely to enter a structure when soil next to the foundation consistently is moist. So, divert water away from the foundation with properly functioning gutters, downspouts and splash blocks. Repair leaking faucets, water pipes and air conditioning units. Adjust the soil grade next to the foundation so that surface-water drains away from the building and adjust lawn sprinklers and irrigation systems to minimize water pooling near the foundation.

Reduce humidity in crawl spaces by providing adequate ventilation. Don't allow shrubbery and other vegetation to



Ant/Termite photo comparison, courtesy of UK Extension, Publication ENTFACT-604

grow over vents; it will inhibit cross-ventilation. You can reduce crawl space moisture by installing four- to six-milliliter polyethylene sheeting over about 75 percent of the soil surface.

Firewood, lumber and other wood debris stored against the foundation or in crawl spaces, attract termites and provide a food source. This practice also gives termites a hidden entry into the home and allows them to bypass any existing termiticide soil barrier.

Cellulose-containing materials including mulch and wood chips attract termites. Use these materials sparingly, especially when you have other conditions conducive to termite problems. Never allow mulch to touch wood siding, door frames or window frames. Consider using crushed stone or pea gravel instead. These materials are less attractive to termites and can reduce other pests such as millipedes, pillbugs, earwings and crickets.

The best way to prevent termite infestations is to have your home treated by a professional pest control firm. There are two general categories of termite treatment, liquids and baits. Liquid treatments are intended to provide an effective, long-lasting chemical barrier around and beneath your home that termites cannot breach. Termite baits are installed in plastic stations below the

ground in the yard and occasionally indoors. Foraging termites consume the bait and share it with their nest-mates, resulting in a gradual decline in termite numbers.

What should you look for when choosing a pest control firm? The firm should be licensed by the Kentucky Department of Agriculture. Membership in the Kentucky Pest Control Association and/or National Pest Control Association suggests the company is an established firm with access to the training and technical information necessary to correctly do the job. Consider calling at least two to three companies and asking for references. Avoid pest control firms that use "specials" or scare tactics to pressure you into immediately signing a contract.

Termiticides are extensively tested for adverse effects. Based on current research, registered termiticides present no significant hazard to humans, pets, or the environment when applied according to label directions.

For more information about termites and identifying insect pests, contact the Estill County Extension Office at 723-4557.

Educational programs of the Cooperative Extension Service serve all people regardless of economic or social status and will not discriminate on the basis of race, color, ethnic origin, national origin, creed, religion, political belief, sex, sexual orientation, gender identity, gender expressions, pregnancy, marital status, genetic information, age, veteran status, or physical or mental disability.

Wishing Well®

| | | | | | | | | | | | | |
|---|---|---|---|---|---|---|---|---|---|---|---|---|
| 3 | 5 | 3 | 7 | 2 | 5 | 7 | 5 | 7 | 6 | 8 | 2 | 3 |
| S | T | H | D | B | A | E | K | M | L | S | E | A |
| 2 | 4 | 2 | 6 | 3 | 4 | 2 | 5 | 7 | 4 | 7 | 2 | 5 |
| S | F | E | I | R | A | N | E | A | M | N | S | A |
| 4 | 3 | 4 | 6 | 7 | 5 | 2 | 6 | 8 | 3 | 7 | 2 | 8 |
| E | P | I | S | D | C | I | T | U | E | T | B | C |
| 3 | 5 | 3 | 2 | 4 | 2 | 3 | 7 | 6 | 4 | 8 | 7 | 5 |
| N | T | Y | L | S | E | O | H | E | Y | C | E | I |
| 3 | 5 | 8 | 6 | 7 | 5 | 8 | 4 | 5 | 6 | 7 | 4 | 6 |
| U | O | E | N | B | N | S | O | N | T | E | U | O |
| 7 | 8 | 3 | 5 | 7 | 3 | 4 | 5 | 3 | 4 | 3 | 6 | 3 |
| S | S | R | O | T | S | R | W | K | S | I | O | L |
| 8 | 3 | 8 | 3 | 8 | 6 | 8 | 6 | 8 | 6 | 8 | 6 | 6 |
| U | L | P | S | H | T | E | H | L | E | D | R | S |

HERE IS A PLEASANT LITTLE GAME that will give you a message every day. It's a numerical puzzle designed to spell out your fortune. Count the letters in your first name. If the number of letters is 6 or more, subtract 4. If the number is less than 6, add 3. The result is your key number. Start at the upper left-hand corner and check one of your key numbers, left to right. Then read the message the letters under the checked figures give you.

©2019 King Features Syndicate, Inc.

CryptoQuip

This is a simple substitution cipher in which each letter used stands for another. If you think that X equals O, it will equal O throughout the puzzle. Solution is accomplished by trial and error.

Clue: P equals T

AVXX-YMKAM OFNSQ PFXV

OVFPTSMMC F CSKTB KO

ASNMYXQ-GYNMMVE PKQ EKCG:

"PDV PDSVV XNPPXV BTCG."

©2019 King Features Synd., Inc.

CryptoQuote

AXYDLBAAXR is LONGFELLOW

One letter stands for another. In this sample, A is used for the three L's, X for the two O's, etc. Single letters, apostrophes, the length and formation of the words are all hints. Each week the code letters are different.

VCBGB QL GBEMMX JA LOKC

VCQJD EL ZET UBEVCBG,

AJMX TQSSBGBJV IQJTL

AS DAAT UBEVCBG.

— PACJ GOLIQQ

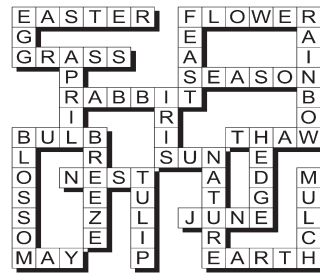
©2019 King Features Synd., Inc.

Puzzle Answers

April 10, 2019

Puzzles4Kids

Answer

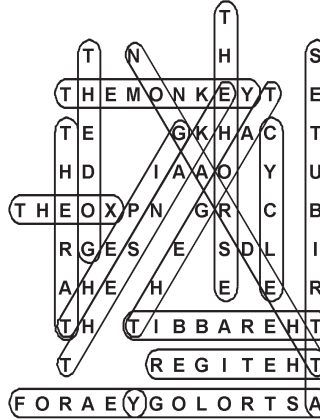


Letter Box

Solution

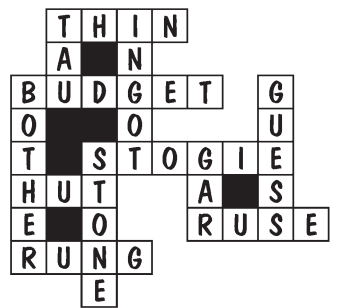
| | | | | | | | | |
|---|---|---|---|---|---|---|---|---|
| I | L | P | T | S | E | K | C | O |
| S | T | O | C | K | P | I | L | E |
| K | C | E | L | I | O | P | S | T |
| P | K | S | E | C | I | O | T | L |
| E | I | T | P | O | L | C | K | S |
| C | O | L | K | T | S | E | I | P |
| O | S | K | I | P | T | L | E | C |
| L | P | C | S | E | K | T | O | I |
| T | E | I | O | L | C | S | P | K |

CHINESE ZODIAC



FEAR KN&T

answer



Even Exchange

answers

1. Lather, Lather
2. Right, Tight
3. Import, Impart
4. Stowe, Stove
5. Prime, Pride
6. Barker, Banker
7. Scott, Scout
8. Fender, Tender
9. Great, Greet
10. Pastel, Pasted

Weekly SUDOKU

Answer

| | | | | | | | | |
|---|---|---|---|---|---|---|---|---|
| 4 | 7 | 9 | 5 | 3 | 6 | 2 | 1 | 8 |
| 2 | 6 | 3 | 4 | 8 | 1 | 7 | 5 | 9 |
| 8 | 5 | 1 | 7 | 2 | 9 | 4 | 6 | 3 |
| 1 | 2 | 6 | 9 | 7 | 4 | 3 | 8 | 5 |
| 7 | 3 | 8 | 2 | 6 | 5 | 1 | 9 | 4 |
| 5 | 9 | 4 | 3 | 1 | 8 | 6 | 2 | 7 |
| 9 | 8 | 7 | 6 | 4 | 2 | 5 | 3 | 1 |
| 3 | 1 | 2 | 8 | 5 | 7 | 9 | 4 | 6 |
| 6 | 4 | 5 | 1 | 9 | 3 | 8 | 7 | 2 |

King Crossword

Answers

Solution time: 24 mins.

| | | | | | | | | | |
|---|---|---|---|---|---|---|---|---|---|
| T | S | P | G | E | M | S | A | B | E |
| H | O | E | R | I | O | T | N | E | R |
| O | U | R | A | G | R | A | E | A | S |
| U | P | T | O | T | H | E | M | I | N |
| P | E | T | M | A | T | | | | |
| J | O | K | E | R | M | E | N | O | D |
| O | W | E | N | B | U | R | S | H | O |
| Y | E | N | J | A | M | C | L | O | C |
| S | E | Z | C | U | E | | | | |
| D | O | W | N | T | O | T | H | E | W |
| A | L | O | E | O | T | L | S | D | O |
| N | I | K | E | K | N | O | T | L | A |
| G | O | E | R | A | S | E | A | E | M |

The Garden Bug

Pet poison

Day lilies are highly toxic to cats; even small amounts of the plant can cause severe kidney damage. The site www.aspc.org lists many of the plants most lethal to pets and hosts a 24-hour hotline to its poison control center.

Source: www.aspc.org

Birding BITS

BY Cindy Brook

Earth Day!
Here are some things you can do for Earth Day: Clean up the yard. Rake up seed hulls, pull pesky weeds and sweep around your little bird area. Plant some scarlet sage for hummingbirds, or plant milkweed—a host plant for monarch butterfly caterpillars. Enjoy the great outdoors!

E-mail: birdingbits@cfl.r.com
© 2013 King Features Syndicate, Inc.

Farming News

Kentucky Heritage Group

Do you remember your Granny's recipes? Soap making and quilting techniques? The Twin City Homemaker Club, along with the Estill County Homemakers would like to start a Kentucky Heritage group where locals bring a light to cherished traditions and mountain arts of our heritage. If you would be interested in being a part of this group, please contact the Estill County Cooperative Extension Office at 606-723-4557.

Thursday, April 11th @ 6:00pm

Livestock Traceability Update

Cooperative Extension and Estill County Cattlemen's Association will have a cattle producer meeting on Thursday, April 11th, 6:00 p.m., at the Estill County Extension office. Dr. Chris Craig, DVM with USDA-APHIS Veterinary Services will give a U.S. livestock traceability update. Bluegrass Stockyards of Richmond will sponsor our catered meal. Please call 723-4557 to pre-register so we can adequately plan for the meal.

Stickeler's Puzzle

STICKELERS [etc.]
by Terry Stickels

Here's a "double pyramid" puzzle — two words that, when put together, form a well-known phrase.

| | | | |
|---|---|---|---|
| O | | | |
| T | U | | |
| N | L | E | |
| M | N | A | M |

| | | | | |
|---|---|---|---|---|
| A | | | | |
| S | D | | | |
| T | M | O | | |
| P | E | S | I | |
| I | T | N | N | P |

Hint: This phrase is something you hear when top draft choices in sports never quite make the grade.

©2019 King Features Syndicate

Stickeler's Answer on Page 11

Bible Trivia Answers

Now available by Wilson Casey! 2017 Bible Trivia box calendar loaded with daily teasers.

ANSWER: (1) Old; (2) 2 (Ruth and Esther); (3) Naza-rite; (4) Moses; (5) Salome; (6) Aaron