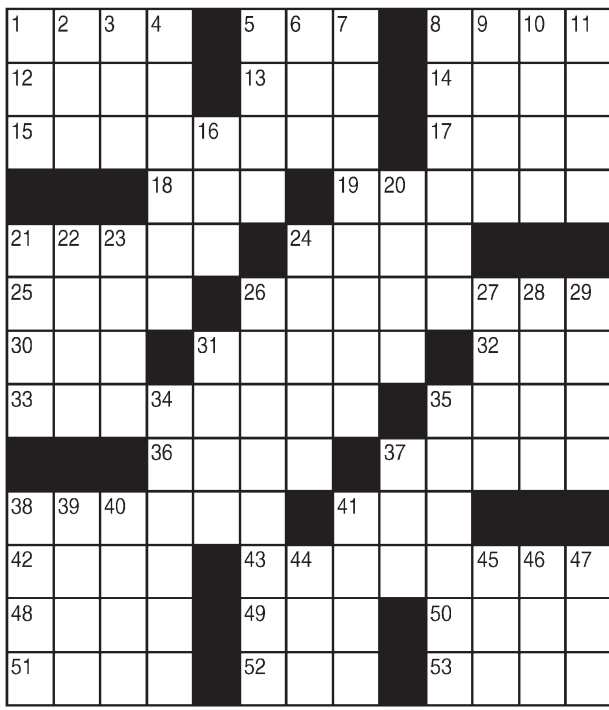


King Crossword

ACROSS

- 1 Fellow
- 5 " — Blue?"
- 8 Barbershop item
- 12 Mentor
- 13 CD- —
- 14 Sheltered, at sea
- 15 Office machine
- 17 Tarzan's transport
- 18 Scrooge's outcry
- 19 Hateful
- 21 Future mare
- 24 Met melody
- 25 Sandwich cookie
- 26 Site of many sites
- 30 Swindle
- 31 Paquin and Quindlen
- 32 Id counterpart
- 33 Gap
- 35 Bartlett, for one
- 36 Line of stitching
- 37 Papa
- 38 Triangular letters
- 41 " — Town"
- 42 Pelvic bones
- 43 Lyon-based crimefighting group
- 48 Expansive



DOWN

- 1 Film high-tech tricks (Abbr.)
- 2 Attila, for one
- 3 Skill
- 4 Colorado city
- 5 St. Louis attraction
- 6 Cattle call?
- 7 Undying
- 8 Ritzy spread
- 9 Hodgepodge
- 10 Server's handout
- 11 Honey bunch?
- 16 Shaft of light
- 20 Conks out
- 21 Central points
- 22 Press
- 23 Fasting period
- 24 Region of Vietnam
- 26 Tending to spread
- 27 Requirement
- 28 "Zounds!"
- 29 British conservative
- 31 Neighborhood
- 34 Subject of a will
- 35 Buccaneer's bird
- 37 Payable
- 38 Prima donna
- 39 Verve
- 40 Roster
- 41 Sgt. Snorkel's dog
- 44 Asian electronics giant
- 45 Omega pre-ceder
- 46 On in years
- 47 Actress

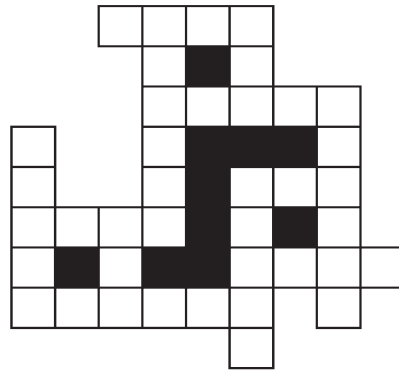
© 2019 King Features Synd., Inc.

FEAR & KNIGHT

By: rj johnson

DOUBT? ... OR DARE!

- FXO
- ENUDIC
- LYMDO
- ♥MEDI
- DWIYMA
- ♥AET
- ♥ELFA
- ♥SIFTR
- ♥MDA
- AITDEX
- ADUMT
- ♥ERFI

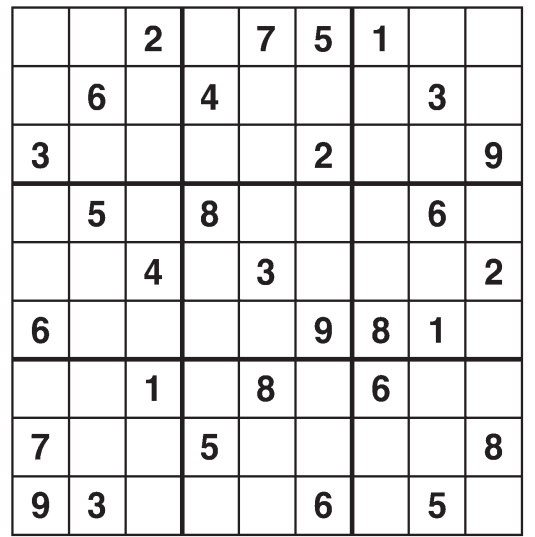


Unscramble these twelve letter strings to form each into an ordinary word (ex. HAGNEC becomes CHANGE). Prepare to use only ONE word from any marked (♥) letter string as each unscrambles into more than one word (ex. ♥RATHE becomes HATER or EARTH or HEART). Fit each string's word either across or down to knot all twelve strings together.

©2019 King Features Syndicate. All rights reserved.

Weekly SUDOKU

by Linda Thistle



Place a number in the empty boxes in such a way that each row across, each column down and each small 9-box square contains all of the numbers from one to nine.

DIFFICULTY THIS WEEK: ◆

- ◆ Moderate
- ◆◆ Challenging
- ◆◆◆ HOO BOY!

© 2019 King Features Synd., Inc.

Puzzles4Kids

by Helene Hovanec

CODED RIDDLE

Change each letter to the one that comes immediately BEFORE it in the alphabet to find a riddle and its answer.

Here's a copy of the alphabet to guide you:

A B C D E F G H I J K L M N O P Q R S T U V W X Y Z

X I F O E P E S J W F S T T U P Q U P F B U ?

X I F O U I F Z D P N F U P B G P S L

J O U I F S P B E

© 2019 King Features Synd., Inc.

Just Like Cats & Dogs

by Dave T. Phipps



Even Exchange

by Donna Pettman

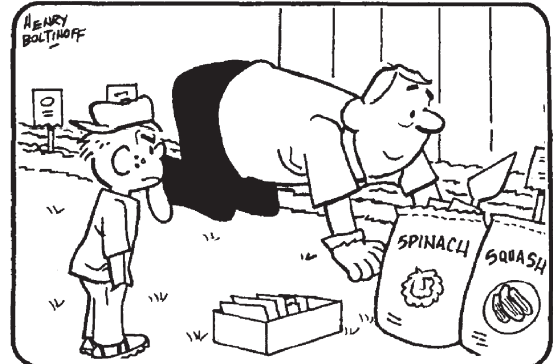
Each numbered row contains two clues and two 6-letter answers. The two answers differ from each other by only one letter, which has already been inserted. For example, if you exchange the A from MASTER for an I, you get MISTER. Do not change the order of the letters.

- | | | | |
|-----------------------|-----------|------------------|-----------|
| 1. Pebble | S _ _ _ _ | Make amends | A _ _ _ _ |
| 2. Closet accessory | _ A _ _ _ | Craving for food | _ U _ _ _ |
| 3. Veranda | _ O _ _ _ | Bird's roost | _ E _ _ _ |
| 4. Eat greedily | _ _ _ _ R | Pious | _ _ _ _ T |
| 5. Tea-cake | _ _ O _ _ | Play segment | _ _ E _ _ |
| 6. Garment fastener | _ _ T _ _ | Richard or LeVar | _ _ R _ _ |
| 7. Used a broom | _ W _ _ _ | Took a nap | _ _ L _ _ |
| 8. Place a bet | _ _ G _ _ | H ₂ O | _ _ T _ _ |
| 9. Boxer Sonny | _ _ _ O _ | Eavesdrop | _ _ _ E _ |
| 10. Speeding citation | T _ _ _ _ | Fence stake | P _ _ _ _ |

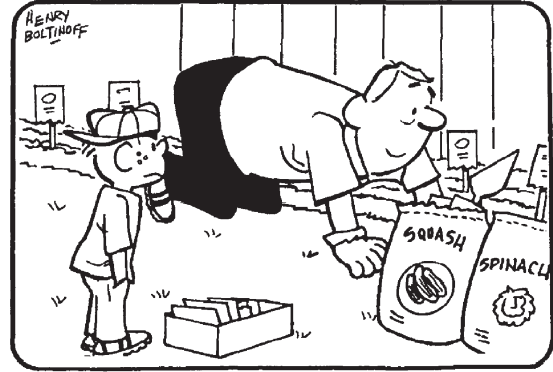
© 2019 King Features Synd., Inc.

HOCUS-FOCUS

BY HENRY BOLTINOFF



Find at least six differences in details between panels.



Differences: 1. Boy's cap is backward. 2. Bag has been switched. 3. Man's shoe is different. 4. Fence is longer. 5. Box is closer to boy. 6. Extra marker is in garden.

MAGIC MAZE • TINY

Q V S Q C N K H E B Y W T R O
 L J G E B I Y W U R Y S N E E
 P N B K I G P T D L B Y Z X L
 V S Q M O M K O I G L B E E U
 C A Y W U U L Y C S Q A P Z C
 N L J H F H I E N S E B M I S
 (D I M I N U T I V E) O C A S U
 Y X V U S U T M Q P E R N T N
 M K J H N E L F O E C T C N I
 Y T T I B B E R U T A I N I M
 Z Y M X V U T W R Y M G Y P M

Find the listed words in the diagram. They run in all directions forward, backward, up, down and diagonally

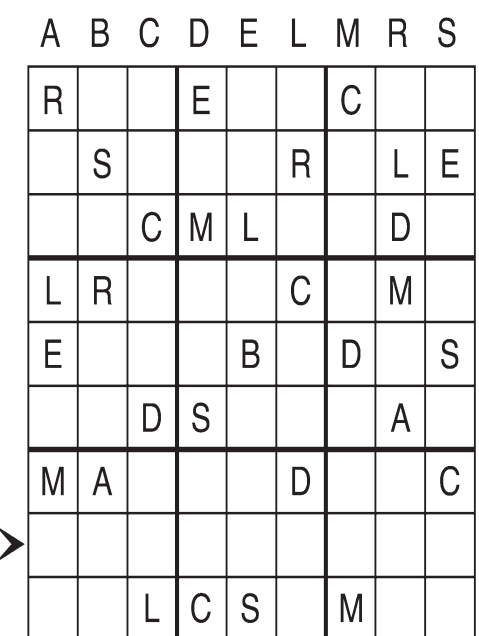
- | | | | |
|------------|-------------|-----------|-----------|
| Baby | Microscopic | Pint-size | Tom Thumb |
| Diminutive | Miniature | Pygmy | Toy |
| Eezy | Minuscule | Small | Wee |
| Little | Minute | Teeny | |

©2019 King Features Syndicate, Inc. All rights reserved.

Letter Box

by Linda Thistle

Place a letter in the empty boxes in such a way that each row across, each column down and each small 9-box square contains all of the letters listed above the diagram. When completed, the row indicated will spell out a word or words.



© 2011 King Features Synd., Inc.

Salome's Stars

ARIES (March 21 to April 19) You might be tempted to be more assertive when dealing with a job-related matter. But a carefully measured approach works best at getting the cooperation you're looking for.

TAURUS (April 20 to May 20) While others urge you to act now, you instinctively recognize that a move at this time is not in your best interests. You should know when to do so by week's end.

GEMINI (May 21 to June 20) A busy schedule keeps you on the move for much of the week. But things ease up by the time the weekend arrives, allowing you to reconnect with family and friends.

CANCER (June 21 to July 22) Travel dominates the week, and despite some delays in getting to where you want to go, the overall experience should prove to be a positive one in many ways.

LEO (July 23 to August 22) Your Leonine self-confidence comes roaring back after a brief period of doubt and helps you get through a week of demanding challenges and ultimately emerge triumphant.

VIRGO (August 23 to September 22) Virgos who have made a major commitment - personal or professional - should be able to tap into a renewed reservoir of self-confidence to help them follow through.

LIBRA (September 23 to October 22) You soon could receive news from a surprising source that could cause you to change your mind about how you had planned to deal with an ongoing job-related problem.

SCORPIO (October 23 to November 21) A surprise move of support from a colleague who has never been part of your circle of admirers helps influence others to take a new look at what you've put on the table.

SAGITTARIUS (November 22 to December 21) While a bold decision to take an "I know what I'm doing" approach impresses some colleagues, it also raises the risk of causing resentment among others.

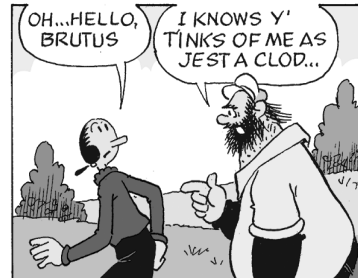
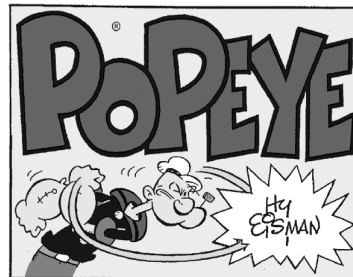
CAPRICORN (December 22 to January 19) A misunderstanding 'twixt you and a friend might not be your fault at all, despite what he or she suggests. Talk it out to see at what point the confusion might have started.

AQUARIUS (January 20 to February 18) Getting into a community operation fulfills the Aquarian's need to help people. It also can lead to new contacts that might one day help you with a project.

PISCES (February 19 to March 20) A minor problem could delay the start of a long-anticipated trip for two. Use the time to recheck your travel plans. You might find a better way to get where you're going.

BORN THIS WEEK: You are a dedicated romantic who seeks both excitement and stability in your relationships.

© 2019 King Features Synd., Inc.



R.F.D.



Amber Waves



The Spats



by Jeff Pickering

©2019 King Features Syndicate, Inc. All rights reserved.