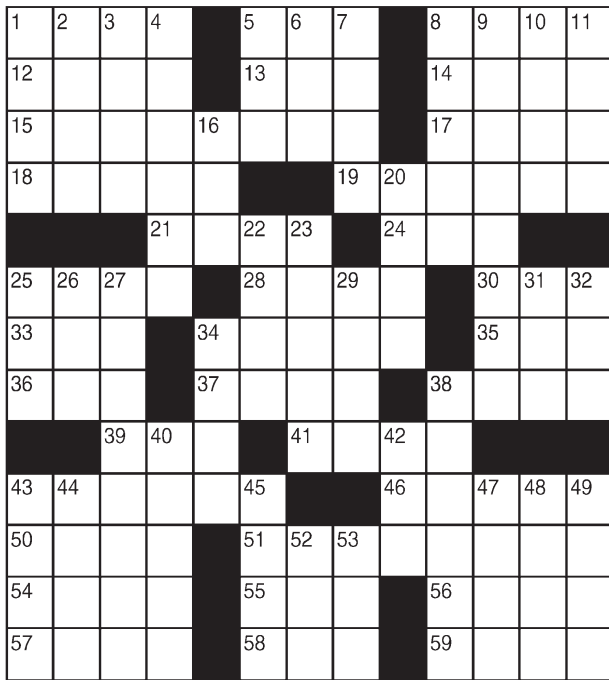


King Crossword

ACROSS

- 1 Gaucho's weapon
- 5 Big Apple abbr.
- 8 Silenced "Hey!"
- 12 "Once — a Mattress"
- 13 Debtor's letters
- 14 Duel tool
- 15 Delphinium
- 17 Rotate
- 18 Dismal
- 19 Snow White's pals
- 21 Put on the line
- 24 Everything
- 25 Pop flavor
- 28 Frogs' hang-out
- 30 Make up your mind
- 33 Kinsman, for short
- 34 Drops from the payroll
- 35 Letter after 31-Down
- 36 Moment
- 37 From the start
- 38 Read cursorily
- 39 Barbie's companion
- 41 Teensy bit
- 43 Go directly downhill
- 46 Pacific porch
- 50 Desirous look
- 51 Rash



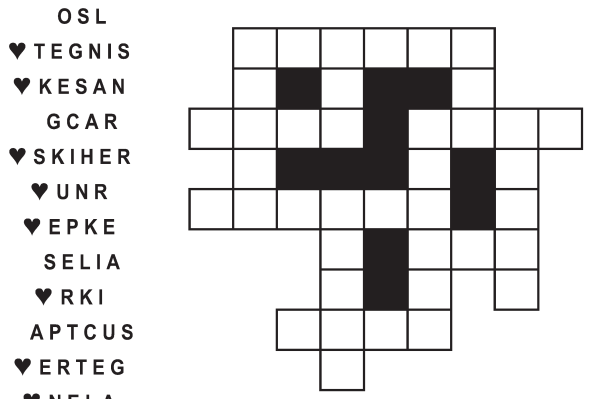
- 54 Sandwich cheese label
- 55 Sphere
- 56 Reclined
- 57 Marries
- 58 Bill
- 59 Pronto, in the ER
- 8 Corolla component
- 9 Morgan of "Super Size Me"
- 10 Lowly laborer
- 11 Sawbucks
- 16 Half a Vail pair
- 20 Bankrolls
- 22 Rotate
- 23 "M*A*S*H" tales
- 25 Letterman's network
- 26 Raw rock
- 27 Big name in U.S. aircraft
- 29 Mr. Gingrich
- 31 Letter before 35-Across
- 32 Allen or Conway
- 34 Enthusiasts
- 38 T-shirt sizes
- 40 Continental money
- 42 Timeworn
- 43 Decelerate
- 44 Wrap in a waxy cloth
- 45 Attempt
- 47 Tidy
- 48 One side of the Urals
- 49 " — It Romantic?"
- 52 Historic period
- 53 Recede

© 2019 King Features Synd., Inc.

FEAR KNOT

By: rj johnson

DOUBT? ... OR DARE!

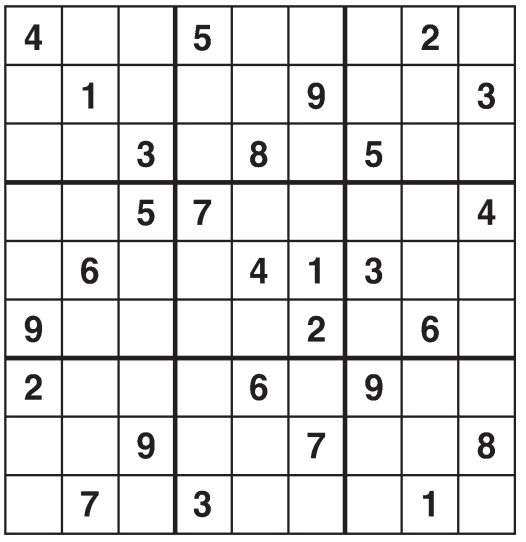


Unscramble these twelve letter strings to form each into an ordinary word (ex. HAGNEC becomes CHANGE). Prepare to use only ONE word from any marked (♥) letter string as each unscrambles into more than one word (ex. ♥RATHE becomes HATER or EARTH or HEART). Fit each string's word either across or down to knot all twelve strings together.

©2019 King Features Syndicate. All rights reserved.

Weekly SUDOKU

by Linda Thistle



Place a number in the empty boxes in such a way that each row across, each column down and each small 9-box square contains all of the numbers from one to nine.

DIFFICULTY THIS WEEK: ♦♦

- ♦ Moderate
- ♦♦ Challenging
- ♦♦♦ HOO BOY!

© 2019 King Features Synd., Inc.

Puzzles4Kids

by Helene Hovanec

WORD FUN

Study the two words on each line to find the ONE letter in the left column that is NOT in the word in the right column. Write the extra letter on the blank space. Then read DOWN to answer this riddle:

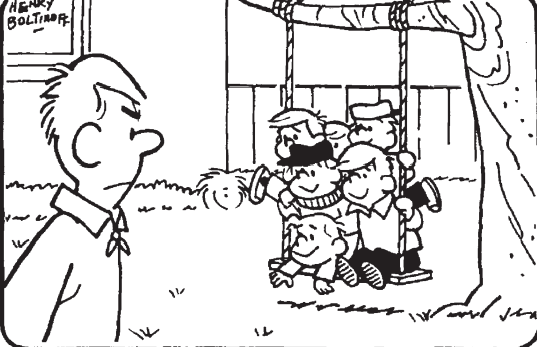
WHAT DO PANDAS GIVE THEIR MOMS ON MOTHER'S DAY?

- | | | | | | | |
|--------|-----|-------|-----|--------|-----|-------|
| BRACES | ___ | CARES | ___ | SPLASH | ___ | SLAPS |
| ESCAPE | ___ | SPACE | ___ | DURING | ___ | GRIND |
| SATIRE | ___ | TIRES | ___ | LAUGHS | ___ | HAULS |
| SPIDER | ___ | SPIED | ___ | PLEATS | ___ | PLATE |

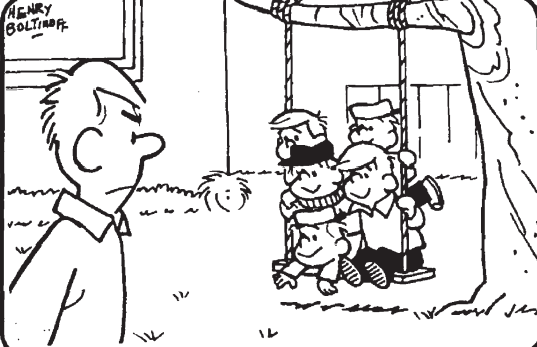
© 2019 King Features Synd., Inc.

HOCUS-FOCUS

BY HENRY BOLTIHOFF



Find at least six differences in details between panels.

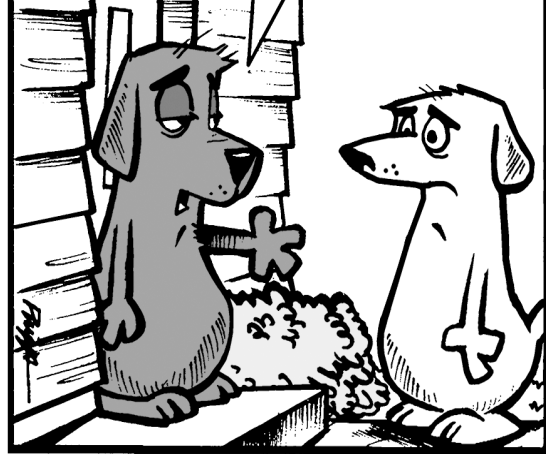


Differences: 1. Man's collar is different. 2. Window is larger. 3. One boy is missing. 4. Leg on the left is missing. 5. Boy on the bottom has a hat. 6. Part of fence is missing.

Just Like Cats & Dogs

by Dave T. Phipps

BOB, FOR POKER NIGHT MY WIFE MADE TOFU AND CUCUMBER SANDWICHES. IF YOU'D RATHER GIVE ME YOUR MONEY AND RUN I UNDERSTAND.



Even Exchange

by Donna Pettman

Each numbered row contains two clues and two 6-letter answers. The two answers differ from each other by only one letter, which has already been inserted. For example, if you exchange the A from MASTER for an I, you get MISTER. Do not change the order of the letters.

- | | | | |
|----------------------|---------------|-----------------------|---------------|
| 1. Elephant feature | ___ _ _ _ N _ | Semi or pickup | ___ _ _ _ C _ |
| 2. Royal residence | ___ _ _ _ C _ | Taste buds | ___ _ _ _ T _ |
| 3. Big Ben's locale | ___ O _ _ _ | Charles Ingalls actor | ___ A _ _ _ |
| 4. Elevator chute | ___ _ A _ _ | Switch gears | ___ _ I _ _ |
| 5. Thicken like milk | ___ _ R _ _ | Snuggle | ___ _ D _ _ |
| 6. Horizontal | ___ _ _ N _ | Writing style | ___ _ _ S _ |
| 7. Timepiece | ___ _ A _ _ | Enchantress | ___ _ I _ _ |
| 8. Create | ___ _ V _ _ | Bent on | ___ _ T _ _ |
| 9. Regal | R _ _ _ _ | Faithful | L _ _ _ _ |
| 10. Stronghold | ___ _ _ _ R | Thirsty cloth | ___ _ _ _ L |

© 2019 King Features Synd., Inc.

MAGIC MAZE

CANADIAN CITIES AND TOWNS

W M J Q H E Y R A G L A C A B
 Y V T U Q O L I E W I G W D
 B Y W E T M R P R A A I P A M
 X K I B S O I E F D N H B T Y
 W A U E T N O S V D Q I S T O
 M K F C N T H I S U F D G O B
 Z X I I N R N O T N O M D E W
 U V W O L E R S J Q O C N L R
 J H R F (S A S K A T O O N) D C
 N O D N O L H A Y W S V T A S
 T Q P N L K I H F E C B Z Y V

Find the listed words in the diagram. They run in all directions forward, backward, up, down and diagonally

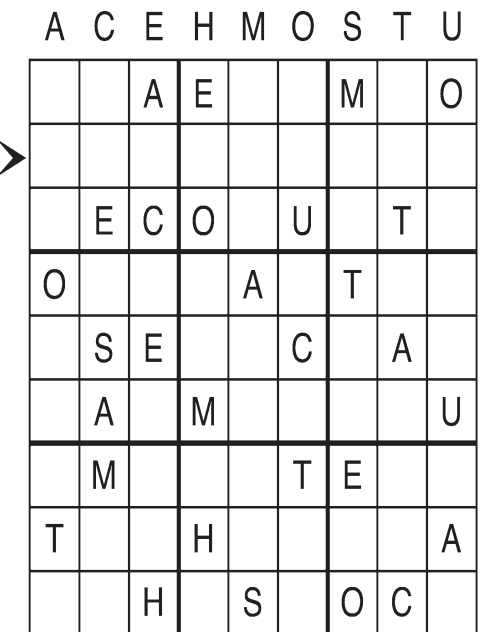
- | | | | |
|----------|----------|------------|----------|
| Calgary | Montreal | Regina | Victoria |
| Edmonton | Oshawa | Saskatoon | Windsor |
| Halifax | Ottawa | St. John's | Winnipeg |
| London | Quebec | Vancouver | |

©2019 King Features Syndicate, Inc. All rights reserved.

Letter Box

by Linda Thistle

Place a letter in the empty boxes in such a way that each row across, each column down and each small 9-box square contains all of the letters listed above the diagram. When completed, the row indicated will spell out a word or words.



© 2012 King Features Synd., Inc.

Salome's Stars

ARIES (March 21 to April 19) This is a good week to look at healing bruised feelings and re-establishing weakened relationships. It's also a good week to start new projects and make new job-linked contacts.

TAURUS (April 20 to May 20) Music and art dominate the week, giving the sensual Bove a lot to appreciate. On the practical side, deal firmly, but fairly, with those who might try to undermine your work efforts.

GEMINI (May 21 to June 20) Good feelings continue to flow from your recent efforts to reconnect with family and friends. But be ready to defuse a dispute before it can disrupt all that peace and harmony.

CANCER (June 21 to July 22) A practical view of a romanticized situation could help to clarify some of its more confusing aspects before you make a decision that could be tough to undo later on.

LEO (July 23 to August 22) Pay more attention to what a recent spate of workplace criticism might say about your performance and not what you think it implies about you personally. Some flexibility might be called for.

VIRGO (August 23 to September 22) With new information, and new promises of support (not to mention growing self-confidence), this could be a good time to restart a project you couldn't quite handle before.

LIBRA (September 23 to October 22) Before you decide to close down a problem-loaded project and make a fresh start with someone else, try once more to reach a compromise with your balky partner. He or she might surprise you.

SCORPIO (October 23 to November 21) While you continue earning points for your sharp negotiating skills, be alert for an attempt to undercut your efforts. You'll need to provide solid facts and figures to stay in the game.

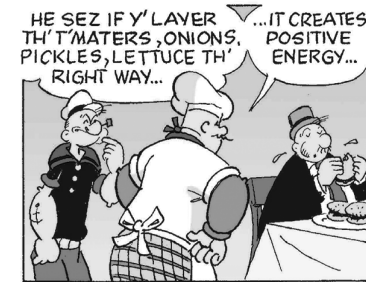
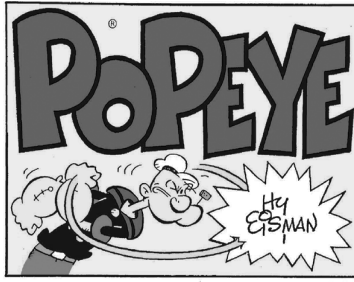
SAGITTARIUS (November 22 to December 21) A minor health problem might cause you to ease up on your usually busy schedule. But you'll soon be back in the saddle and ready to pick up the reins and charge ahead.

CAPRICORN (December 22 to January 19) The adventurous Sea Goat might be eager to take on a new challenge. But before you do, you might want to take some time to check out previously overlooked factors.

AQUARIUS (January 20 to February 18) A feeling of being overwhelmed by all that you have to do can be eased by setting priorities. Deal with the most urgent and time-sensitive situations first, and then work down the line.

PISCES (February 19 to March 20) Creating a calm, peaceful place for yourself in the middle of a rolling emotional whirlpool this week starts when you, and no one else, decide how to make decisions about your life.

BORN THIS WEEK: Your determination to stick with your principles wins the admiration of everyone who knows you.



R.F.D.

by Mike Marland



Amber Waves

by Dave T. Phipps



The Spats

by Jeff Pickering

