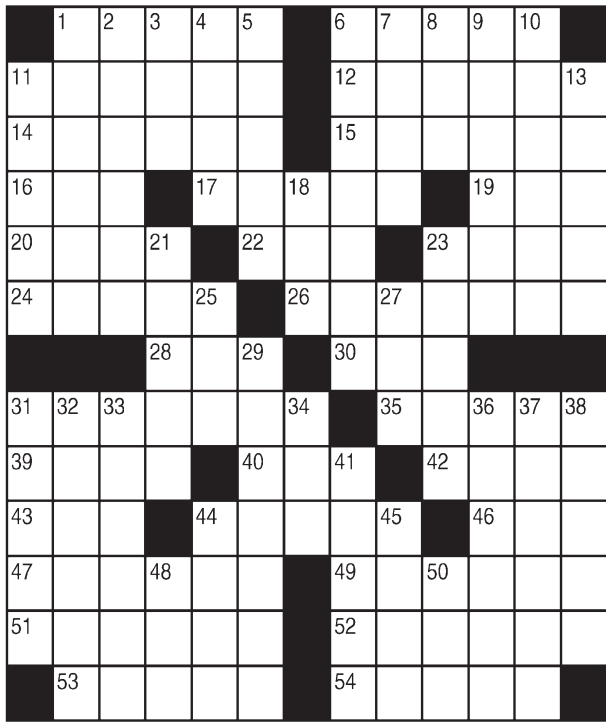


King Crossword

ACROSS

- 1 Macbeth's title
- 6 Hot dog side dish
- 11 Tar
- 12 Bay windows
- 14 Mr. Ed's owner
- 15 President Woodrow —
- 16 Suitable
- 17 Aristocratic
- 19 Pair
- 20 Fishing need
- 22 U.K. fliers
- 23 Ball of yarn
- 24 Gold-finger?
- 26 Copious oil wells
- 28 Water barrier
- 30 Mainlander's memento
- 31 Outstanding
- 35 Kitchen lure
- 39 Apiary house
- 40 Tease
- 42 Strait-laced
- 43 Commotion
- 44 Olympian's award
- 46 Mound stat
- 47 Infamous middle name
- 49 "Die Hard" star
- 51 Taxed
- 52 Loud sounds
- 53 Fight



- 54 Villain's look
- 9 Get snug and cozy
- 10 Not as fast
- 11 Honey bunch?
- 13 Hemingway's "The — of Kilimanjaro"
- 18 Satchel
- 21 Tureen accessory
- 23 Tweet
- 25 7-Down's mule
- 27 Red or Black
- 29 Copes
- 31 Wrap
- 32 Neatens (up)
- 33 Develop
- 34 Disencumber
- 36 Threatening conclusion
- 37 More like a mud pit
- 38 Accumulate
- 41 Sunrises
- 44 Encounter
- 45 Narnia's Aslan, e.g.
- 48 DIY buy
- 50 Perjurer's pronouncement

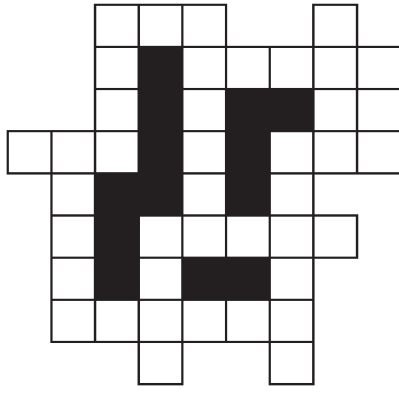
© 2019 King Features Synd., Inc.

FEAR KNOT

By: rj johnson

DOUBT? ... OR DARE!

- TYS
- ♥ SUSITE
- ♥ BRUSE
- ♥ TWSE
- ♥ YIBNAR
- TBI
- ESTU
- ♥ SITNE
- BEW
- DEWSYA
- WYLB
- ♥ BYSU

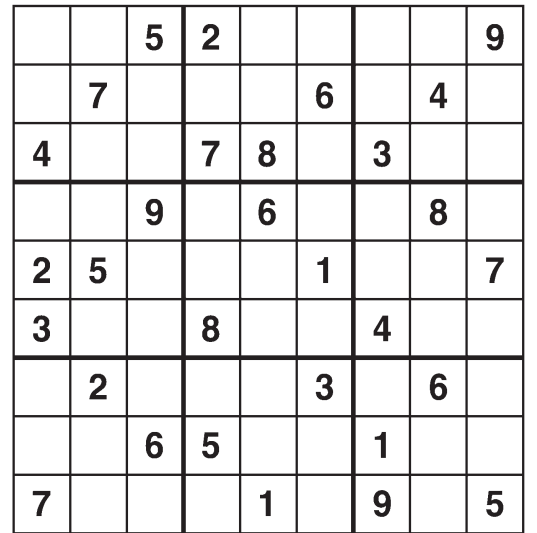


Unscramble these twelve letter strings to form each into an ordinary word (ex. HAGNEC becomes CHANGE). Prepare to use only ONE word from any marked (♥) letter string as each unscrambles into more than one word (ex. ♥ RATHE becomes HATER or EARTH or HEART). Fit each string's word either across or down to knot all twelve strings together.

©2019 King Features Syndicate. All rights reserved.

Weekly SUDOKU

by Linda Thistle



Place a number in the empty boxes in such a way that each row across, each column down and each small 9-box square contains all of the numbers from one to nine.

DIFFICULTY THIS WEEK: ♦♦

- ♦ Moderate
- ♦♦ Challenging
- ♦♦♦ HOO BOY!

© 2019 King Features Synd., Inc.

Puzzles4Kids

by Helene Hovanec

CODED RIDDLE

Change each letter to the one that comes immediately BEFORE it in the alphabet to find a riddle and its answer.

Here's a copy of the alphabet to guide you:

ABCDEFGHIJKLMNOPQRSTUVWXYZ

XIBU EJE UIF DIFXJOH

HVN TBZ UP UIF TIFP?

J BN TUVDL PO ZPV.

©2019 King Features Synd., Inc. All rights reserved.

Just Like Cats & Dogs

by Dave T. Phipps



Even Exchange

by Donna Pettman

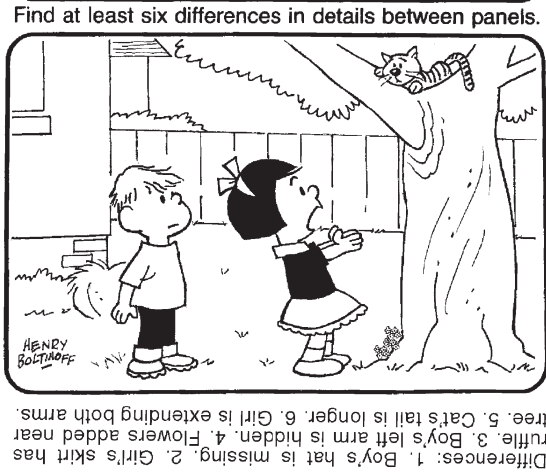
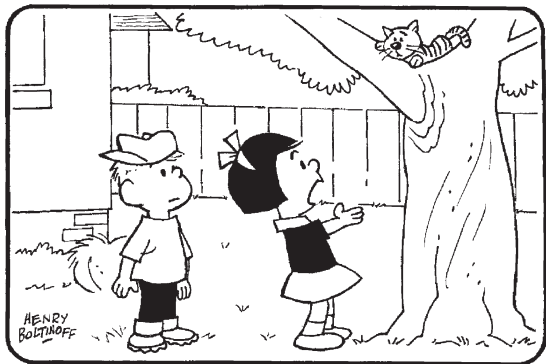
Each numbered row contains two clues and two 6-letter answers. The two answers differ from each other by only one letter, which has already been inserted. For example, if you exchange the A from MASTER for an I, you get MISTER. Do not change the order of the letters.

- | | | | |
|-----------------------|-------------|------------|-------------|
| 1. Hair stylist | — — — B — — | Negotiate | — — — T — — |
| 2. Accountability | F — — — — | Bank safe | V — — — — |
| 3. Keep | — — — — N | To sell | — — — — L |
| 4. Gawk | — T — — — | Startle | — C — — — |
| 5. Popeye's gal | O — — — — | Booming | A — — — — |
| 6. Idea | N — — — — | Movement | M — — — — |
| 7. Gossamer | — — — — R | Luster | — — — — N |
| 8. Ned or Warren | — — — T — — | Splendor | — — — U — — |
| 9. Confine at the zoo | — — C — — | Infuriate | — — — R — — |
| 10. Cowboy food wagon | — H — — — | Coop sound | — L — — — |

© 2019 King Features Synd., Inc.

HOCUS-FOCUS

BY HENRY BOLTINOFF



Differences: 1. Boy's hat is missing. 2. Girl's skirt has ruffles. 3. Boy's left arm is hidden. 4. Flowers added near tree. 5. Cat's tail is longer. 6. Girl is extending both arms.

MAGIC MAZE • BIRD ANATOMY



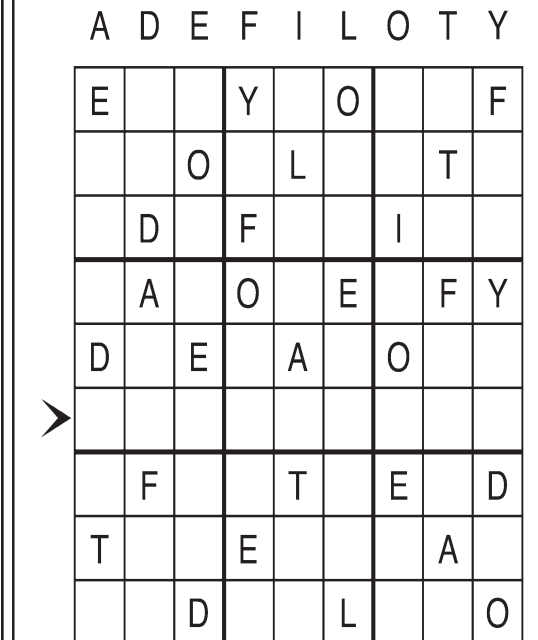
- Find the listed words in the diagram. They run in all directions forward, backward, up, down and diagonally
- | | | | |
|-----------|-----------|-----------|--------|
| Breast | Head | Pupil | Thigh |
| Coverts | Iris | Scapulars | Tibia |
| Eyestripe | Mantle | Tarsus | Wattle |
| Feet | Primaries | Tertials | |

©2019 King Features Syndicate, Inc. All rights reserved.

Letter Box

by Linda Thistle

Place a letter in the empty boxes in such a way that each row across, each column down and each small 9-box square contains all of the letters listed above the diagram. When completed, the row indicated will spell out a word or words.



© 2012 King Features Synd., Inc.

Salome's Stars

ARIES (March 21 to April 19) There's nothing an Aries Lamb likes less than having to tackle a humdrum task. But finding a creative way to do it can make all the difference. A more exciting time awaits you this weekend.

TAURUS (April 20 to May 20) Finishing up a job on time leaves you free to enjoy your weekend without any Taurean guilt pangs. A romantic attitude from an unlikely source could take you by surprise.

GEMINI (May 21 to June 20) Moving in a new career direction might be seen by some as risky. But if you have both the confidence to see it through and the facts to back you up, it could prove rewarding.

CANCER (June 21 to July 22) Holding back on a decision might be difficult, considering how long you've waited for this opportunity. But until you're able to resolve all doubts, it could be the wiser course to take.

LEO (July 23 to August 22) You still need to move carefully where financial matters are concerned. Better for the Lion to move slowly than pounce on a "promising" prospect that doesn't keep its promises.

VIRGO (August 23 to September 22) A rejection of an idea you believe in can be upsetting. But don't let it discourage you. Get yourself back on track and use what you've learned from the experience to try again.

LIBRA (September 23 to October 22) The early part of the week could find you looking to balance your priorities between your family obligations and your career responsibilities. Pressures begin to ease by week's end.

SCORPIO (October 23 to November 21) An associate's problem could cause unavoidable delays in moving ahead with your joint venture. If so, use the time to look into another project you had previously set aside.

SAGITTARIUS (November 22 to December 21) Although a financial problem could be very close to being resolved in your favor, it's still a good idea to avoid unnecessary spending for at least a little while longer.

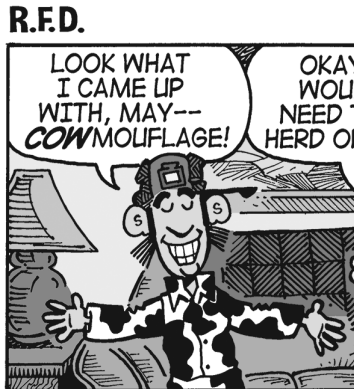
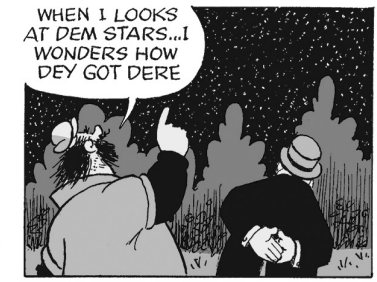
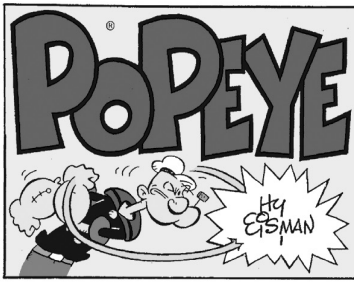
CAPRICORN (December 22 to January 19) Support for some unwelcome workplace decisions begins to show up, and continues to build, so that by week's end, the gregarious Goat is as popular as ever.

AQUARIUS (January 20 to February 18) Congratulations. Deciding to attend a social function you might have earlier tried to avoid could turn out to be one of the best decisions you've made in a long time.

PISCES (February 19 to March 20) Getting into a new situation could prove to be a more difficult experience than you expected. Don't hesitate to ask for advice in coping with some of the more irksome challenges.

BORN THIS WEEK: Your strong sense of duty makes you a valued and trusted member of your community. Have you considered a career in law enforcement?

© 2019 King Features Synd., Inc.



© 2019 King Features Synd., Inc.