

**Eric Baker**  
Estill County Extension  
Agent for Agriculture  
& Natural Resources

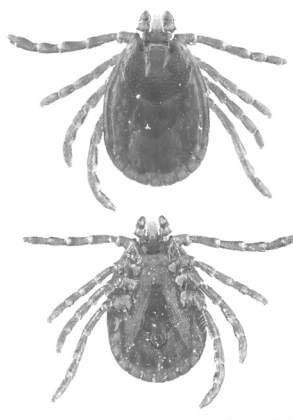
# Tick Season Precautions

lent; products containing DEET are particularly effective. A spray-on clothing treatment containing permethrin is good to use when in places where ticks are likely to be abundant. Avoid walking through tall grass and brushy areas along fence lines or adjacent to woods. Wear light-colored clothing so ticks are easy to spot. Check pets when they come in from outdoors.

The lone star tick and the American dog tick are the most common species found in the state. Their tick bites usually are just an itchy nuisance, but these ticks can carry diseases. Fortunately, only a very small percentage of them are infected. The adult female lone star tick, which has a white spot on its back, can carry ehrlichiosis. Its saliva, injected during feeding, may cause some people to develop a "red meat allergy," a condition diagnosed more often as awareness of it increases. American dog ticks, reddish-brown with mottled white markings on their backs, have the potential to carry spotted fever. In

addition, the blacklegged tick, also known as the deer tick, is becoming more common in the state and carries Lyme disease.

An invasive species of tick has been discovered in the state. The first confirmed detection of Asian longhorn tick in Kentucky occurred July 15, 2018. It was collected from a research elk in Martin County. The longhorn tick was first discovered in the US in 2017 in New Jersey, and is now known to have been here since at least 2010. The longhorn tick is native to East Asia and is significant due to its wide host range (which includes domestic and wild animals), its proficiency in developing heavy infestations on animals (females do not need males to produce viable eggs), and its ability to serve as a potential vector of bacterial and viral diseases of animals. So far, there have been no confirmed pathogens transmitted from this tick in North America. We encourage you to submit any unusual ticks to the Extension office for identification.



UGA Coop Extension

## Longhorn Tick

Prevention is the key to reducing the chance of being bitten by a tick. Even then, it is almost inevitable that some ticks will get past protective efforts, but prompt removal of attached ticks reduces the chance of infection if the tick is carrying a disease. Use fine-tipped tweezers to remove an attached tick. Grasp it as close to the skin as possible and remove it with a gentle, steady pull. Then, wash the bite area and your hands. Apply an antiseptic to the bite site to protect the wound from infection.

Educational programs of the Cooperative Extension Service serve all people regardless of economic or social status and will not discriminate on the basis of race, color, ethnic origin, national origin, creed, religion, political belief, sex, sexual orientation, gender identity, gender expressions, pregnancy, marital status, genetic information, age, veteran status, or physical or mental disability.

## Wishing Well®

3	7	8	7	6	4	6	8	6	4	8	3	6
S	F	S	R	S	H	P	Y	L	A	M	T	E
4	3	2	6	8	5	2	7	4	3	5	7	3
S	A	S	N	P	L	P	I	T	T	O	E	U
6	8	2	5	6	3	8	3	8	5	8	2	4
D	A	R	V	I	S	T	C	H	I	Y	E	E
3	7	4	8	6	4	2	6	8	7	3	7	4
H	N	N	F	D	D	A	V	O	D	A	S	E
7	6	8	6	8	7	6	3	6	8	3	4	5
V	I	R	C	O	I	T	N	O	T	G	C	N
6	4	3	6	7	2	8	2	5	7	3	4	5
R	I	E	Y	S	D	H	L	G	I	S	S	J
2	7	8	2	8	4	8	4	5	4	5	2	4
O	T	E	V	R	I	S	O	N	Y	E	S	

HERE IS A PLEASANT LITTLE GAME that will give you a message every day. It's a numerical puzzle designed to spell out your fortune. Count the letters in your first name. If the number of letters is 6 or more, subtract 4. If the number is less than 6, add 3. The result is your key number. Start at the upper left-hand corner and check one of your key numbers, left to right. Then read the message the letters under the checked figures give you.

©2019 King Features Syndicate, Inc.

## CryptoQuip

This is a simple substitution cipher in which each letter used stands for another. If you think that X equals O, it will equal O throughout the puzzle. Solution is accomplished by trial and error.

Clue: Z equals U

SD OURP EITUMUI SO VKUNZTPN

DKUR NPTUKEBSYP FUUN

YEKHSOM, CUZ REC PHN ZV

FSBM IETJZPK ISJZUK.

©2019 King Features Synd., Inc.

## CryptoQuote

AXYDLBAAXR  
is LONGFELLOW

One letter stands for another. In this sample, A is used for the three L's, X for the two O's, etc. Single letters, apostrophes, the length and formation of the words are all hints. Each week the code letters are different.

TIR YCGL PI MLP PI PYL

BIQHP VYLDL MIQHM AID QP

QN WIDL QWBIDPCHP PYCH

VQHHQHM ID FINQHM.

— CDPYRD CNYL

©2019 King Features Synd., Inc.



## Helping monarch caterpillars

Monarch populations have declined in the past 30 years, affected by mass reductions of milkweed, the plants that host and feed these butterflies and their young. By planting more milkweed and avoiding the use of pesticides near them, more monarchs can feed and lay eggs. Once hatched, though, their caterpillars need protection from predators such as lizards, wasps, frogs and spiders as they feed, grow and form their cocoons. Some monarch enthusiasts maintain screened enclosures to house and feed them safely through their growth cycles. - B. Weaver

Source: WFSU, www.inverse.com, www.monarch-butterfly.com



## Name That Bird

When learning how to identify birds, things to look for are: Is the tail long or short, or is it cocked like a wren's? Does it have a crest like a cardinal or wing bars like a goldfinch? A field guide can be helpful, too. Good luck!

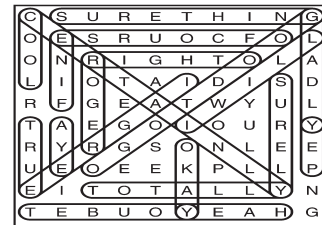
E-mail: birdingbits@cfl.rr.com  
© 2013 King Features Syndicate, Inc.

# Puzzle Answers

May 15, 2019

## Puzzles4Kids

Answer



Riddle Answer:  
Are you sleeping?

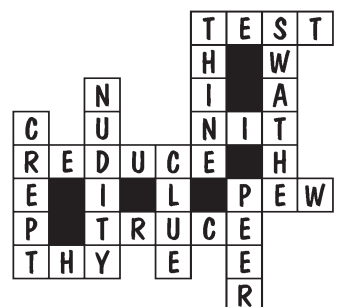
## Letter Box

Solution

A	L	U	D	R	N	C	O	I
D	N	C	U	I	O	R	L	A
O	I	R	C	L	A	D	N	U
R	A	I	N	C	L	O	U	D
L	C	O	R	D	U	A	I	N
N	U	D	A	O	I	L	R	C
U	R	N	O	A	C	I	D	L
C	D	L	I	U	R	N	A	O
I	O	A	L	N	D	U	C	R

## FEAR & KNIT

answer



## Even Exchange

answers

- Bonnet, Sonnet
- Count, Court
- Brisk, Brink
- Clause, Claude
- Propel, Proper
- Spark, Shark
- Night, Eight
- Chase, Cease
- Prize, Pride
- Jungle, Jingle

## Weekly SUDOKU

Answer

9	8	4	5	6	3	1	7	2
3	2	7	1	9	4	8	6	5
1	6	5	2	7	8	3	4	9
4	5	6	3	1	7	2	9	8
8	1	2	9	4	6	7	5	3
7	3	9	8	2	5	4	1	6
5	4	8	6	3	1	9	2	7
2	7	3	4	5	9	6	8	1
6	9	1	7	8	2	5	3	4

## King Crossword

Answers

Solution time: 27 mins.

P	H	O	T	O	S	A	M	E	B
S	U	N	U	P	T	O	E	L	A
I	N	A	N	E	O	N	G	O	I
G	A	R	G	L	E	W	O	K	E
F	E	E	A	R	E	A	N	T	S
E	R	R	S	A	N	G	L	E	
W	A	S	A	B	I	H	E	R	O
P	I	N	T	O	S	N	A	P	
C	R	E	P	T	E	S	P	T	R
H	A	L	E	F	A	T	I	M	A
O	N	E	R	O	U	S	P	E	R
S	I	C	U	S	E	L	I	D	E
E	S	T	R	E	D	S	T	O	O

## CryptoQuip

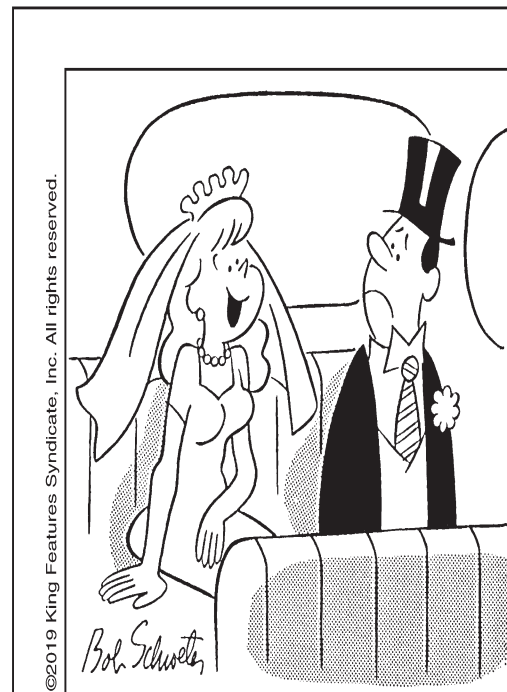
answer

If some alcohol is produced from decorative wood varnish, you may end up with lacquer liquor.

## CryptoQuote

answer

You have to get to the point where going for it is more important than winning or losing. — Arthur Ashe



"Golly, I can hardly wait to see how my new name looks on a \_\_\_\_\_ card."

## SCRAMBLERS

Unscramble the letters within each rectangle to form four ordinary words. Then rearrange the boxed letters to form the mystery word, which will complete the gag!

Highest

TOTUMS

Smirk

PRIMES

Insult

RESCU

Rubble

BRIDES

## TODAY'S WORD

## Americanisms



"Leaders who don't listen will eventually be surrounded by people who have nothing to say."  
— Andy Stanley

© 2019 King Features Syndicate, Inc.

## Stickeler's Puzzle



If 1/2 of 12 were 7, what would be 1/3 of 18?

©2019 King Features Syndicate

Stickeler's Answer on Page 11

## Bible Trivia Answers

Now available by Wilson Casey! 2017 Bible Trivia box calendar loaded with daily teasers.

ANSWER: (1) Neither; (2) The women; (3) John the Baptist; (4) Foolishness; (5) Mites; (6) Jair